

PARCEL PLAT  
4465 S. HIGHWAY 95  
FORT MOHAVE, AZ 86426

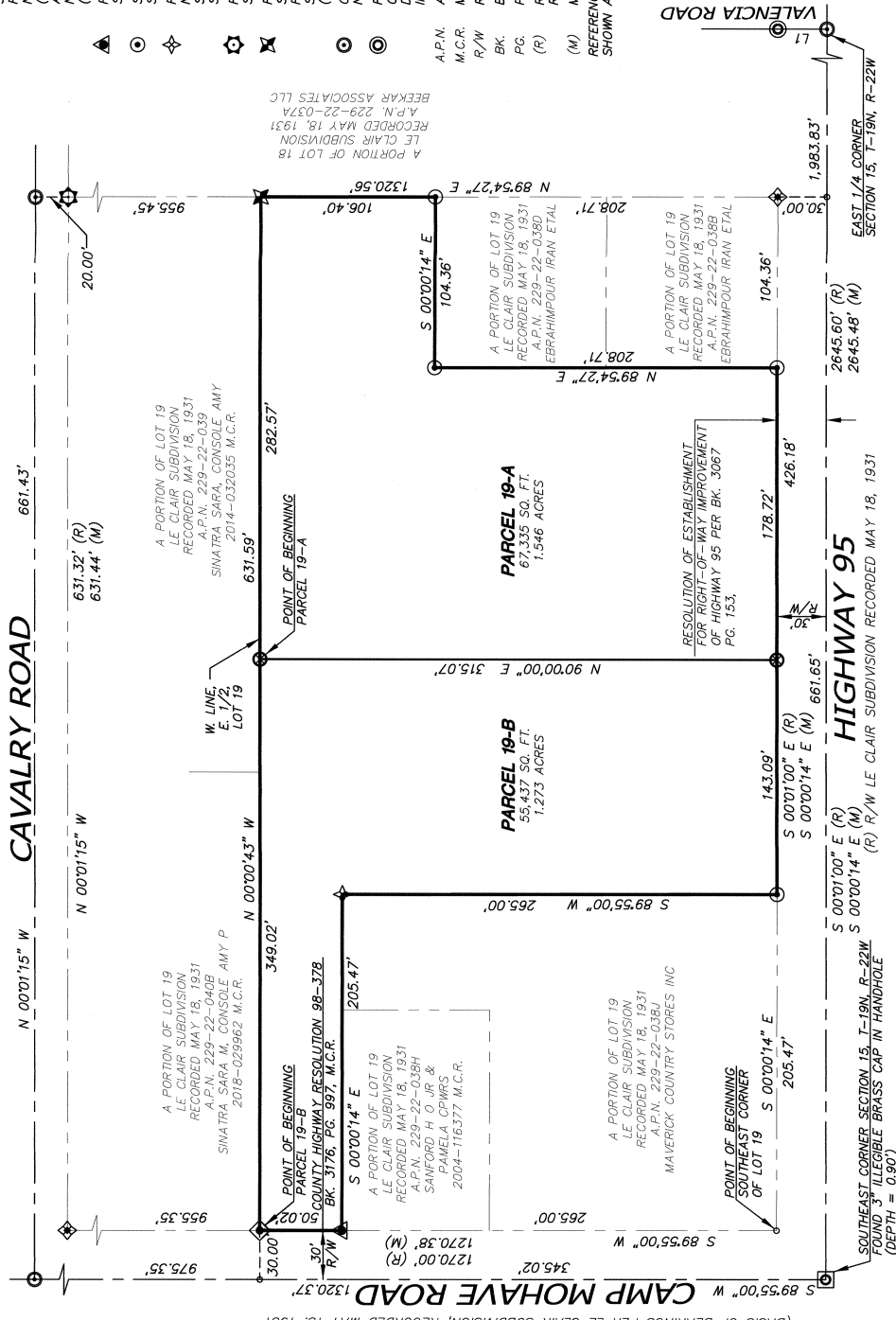
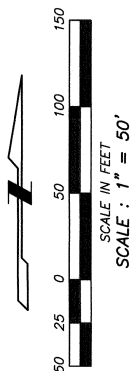
2122 W. Lone Cactus Drive, Suite 11  
Phoenix, AZ 85027  
623-869-0223 (office)  
623-869-0726 (fax)  
www.superiorsurveying.com  
info@superiorsurveying.com



DWN:LE CHK:JM  
SHEET 3 OF 3  
DATE: 2/26/2022  
JOB: 202108087

**LEGEND**

- BOUNDARY LINE
  - - - CENTER LINE OR MONUMENT LINE
  - ⊗ SET 1/2" REBAR W/ ALUMINIUM CAP STAMPED "KLEIN 42137"
  - ⊙ FOUND 1/2" CAPPED REBAR STAMPED 19826 ALSO
  - ⊙ FOUND COTTON PICKER SPINDLE NO IDENTIFICATION (N 89°40'03" W 0.19')
  - ⊙ ALSO FOUND 5/8" REBAR NO IDENTIFICATION (S 76°15'57" W 0.35')
  - ⊙ FOUND 1/2" CAPPED REBAR STAMPED 16617
  - ⊙ SET 1/2" CAPPED REBAR STAMPED "KLEIN 42137"
  - ⊙ NO IDENTIFICATION SET ALUMINIUM CAP STAMPED "KLEIN 42137"
  - ⊙ FOUND 1/2" CAPPED REBAR STAMPED 16581
  - ⊙ FOUND 1/2" CAPPED REBAR STAMPED 29274 ALSO
  - ⊙ FOUND 1/2" CAPPED REBAR STAMPED 48361 (S 89°00'16" E 4.34')
  - ⊙ CALCULATED POSITION NOTHING FOUND OR SET
  - ⊙ FOUND 3" ARIZONA DEPARTMENT OF TRANSPORTATION HIGHWAY DEPARTMENT ALUMINIUM CAP IN HANDHOLE (DEPTH = 0.60')
  - ⊙ ASSESSORS PARCEL NUMBER
  - A.P.N.: MOHAVE COUNTY RECORDS
  - M.C.R.: RIGHT OF WAY
  - R/W: BOOK
  - BK: PAGE
  - Pg: RECORD PER LE CLAIR SUBDIVISION
  - (R) RECORDED MAY 18, 1931
  - (M) MEASURED
- REFERENCE BEARING AND DISTANCES SHOWN ARE MEASURED UNLESS NOTED.



LINE	BEARING	DISTANCE
L1	S 89°59'46" W	30.00'



(R) R/W LE CLAIR SUBDIVISION RECORDED MAY 18, 1931  
 (BASIS OF BEARINGS PER LE CLAIR SUBDIVISION, RECORDED MAY 18, 1931)