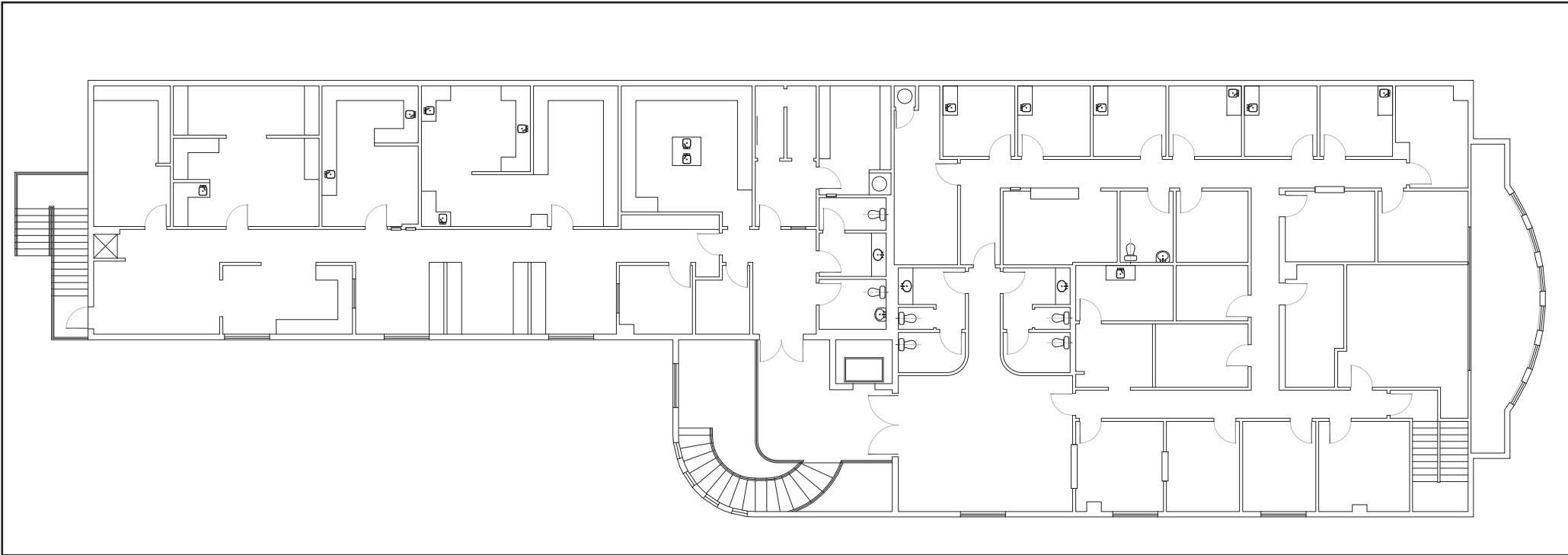


# For Lease Medical Office Building

3059 Maryland Parkway, Las Vegas, NV 89109 (Near Maryland Parkway and Desert Inn)

## Second Floor Plan

**SECOND FLOOR**  
Total Square Footage  
+/- 8,830 rsf



**To learn more, please contact:**

Newmark Grubb Knight Frank  
3930 Howard Hughes Parkway, Suite 180  
Las Vegas, NV 89169  
702.733.7500 main 702.862.8242 fax

**Jason Brooks**  
Director  
702.733.7500 main  
jason.brooks@ngkf.com

**JC Yeh**  
Associate  
702.733.7500 main  
jc.yeh@ngkf.com

Procuring broker shall only be entitled to a commission, calculated in accordance with the rates approved by our principal only if such procuring broker executes a brokerage agreement acceptable to us and our principal and the conditions set forth in the brokerage agreement are fully and unconditionally satisfied. Although all information furnished regarding property for sale, rental, or financing is from sources deemed reliable, such information has not been verified and no express representation is made nor is any to be implied as to the accuracy thereof and it is submitted subject to errors, omissions, change of price, rental or other conditions, prior sale, lease or financing, or withdrawal without notice and to any special conditions imposed by our principal.