

# COMMUNITY FACILITY

at the  
WILLIAMVALE



Lantern

Real Estate Advisors + Partners



# PREMISES

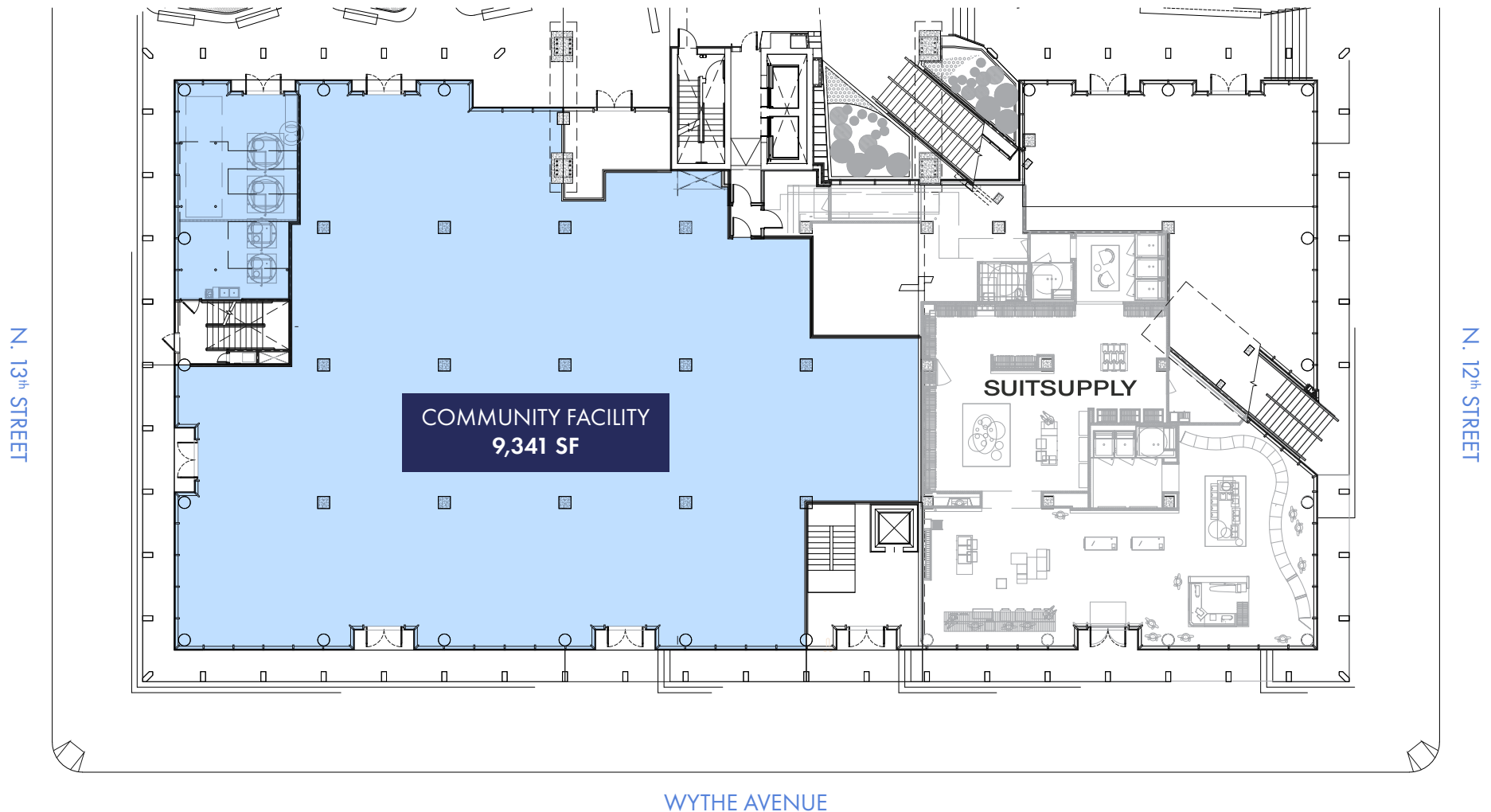
Ground Floor **9,341 SF**  
16' Ceiling Height

Frontage **80'** on Wythe Avenue  
**45'** on N. 13<sup>th</sup> Street

Possession **Immediate**

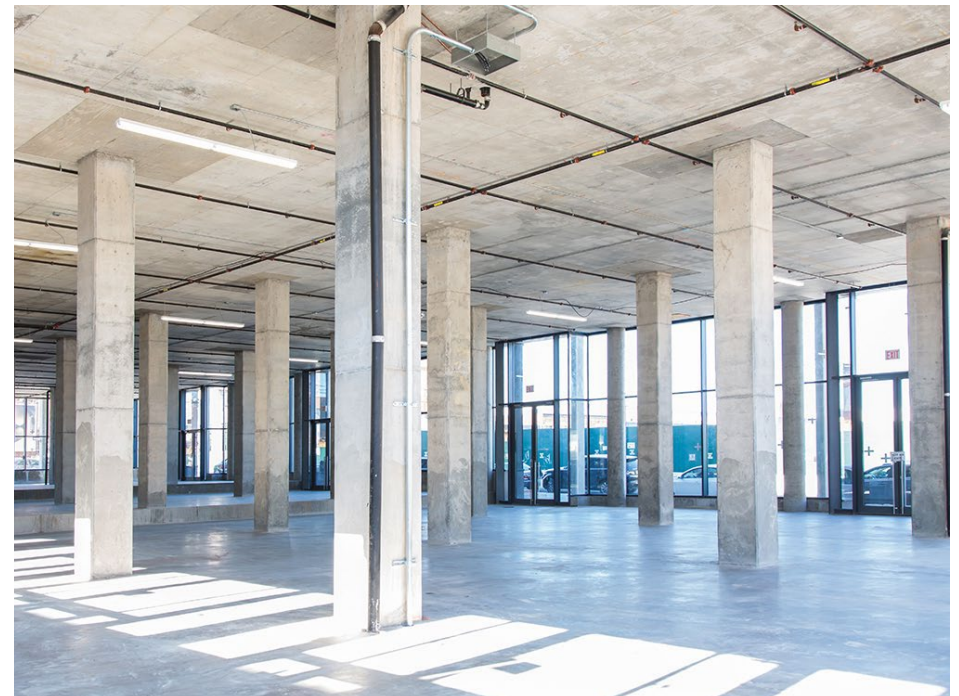
Neighboring Tenants **KITH, Brooklyn Bowl, Bathhouse, Le Crocodile,  
Brooklyn Brewery, Leuca, Suitsupply, Laser Wolf**

- **At the base of the William Vale Hotel**
- **Previous Tenant Northwell Health's buildout still in place**
- **Surrounded by Williamsburg's hotels such as the Arlo Hotel, The Wythe Hotel, The Hoxton, and Coda Williamsburg**
- **In the heart of Williamsburg residential neighborhood**



## ACCEPTED USES

- Higher Educational Facilities: Colleges, Universities, Dormitories, Fraternity or Sorority Houses, Libraries, Museums
- Long Term Care Facility
- House Of Worship: Churches, Synagogues, Mosques, Temples, Monasteries, Convents
- Medical Facilities: Hospital, Ambulatory, Diagnostic or Treatment Centers, Medical Offices, Not-for-Profit Medical Staff Dwelling
- Clubs & Organizations: Non-Commercial Clubs, Community Centers, Non-Commercial Recreation Centers





McCarren Park



SUITSUPPLY



© Ken Spielman



# COMMUNITY FACILITY

at the  
WILLIAM VALE

**MATTHEW SEIGEL**  
matthew@lanterncompany.com

**JUSTIN ABIZADEH**  
justin@lanterncompany.com

**+1 (646) 970-3223**  
www.lanterncompany.com

**Lantern**  
Real Estate Advisors + Partners