

OFFICE FOR LEASE 56 HUNTER STREET



MOVE-IN READY | AVAILABLE NOW | APEX, NC 27502

KARAH JENNINGS MCCONNELL
Executive Vice President, Principal
O 919.576.2502
C 919.817.0705
kjennings@lee-associates.com

MOSS WITHERS, SIOR, MBA
CEO, Principal
O 919.576.2501
mwITHERS@lee-associates.com

 **LEE &
ASSOCIATES**
COMMERCIAL REAL ESTATE SERVICES
RALEIGH • DURHAM • WILMINGTON

PROPERTY SUMMARY

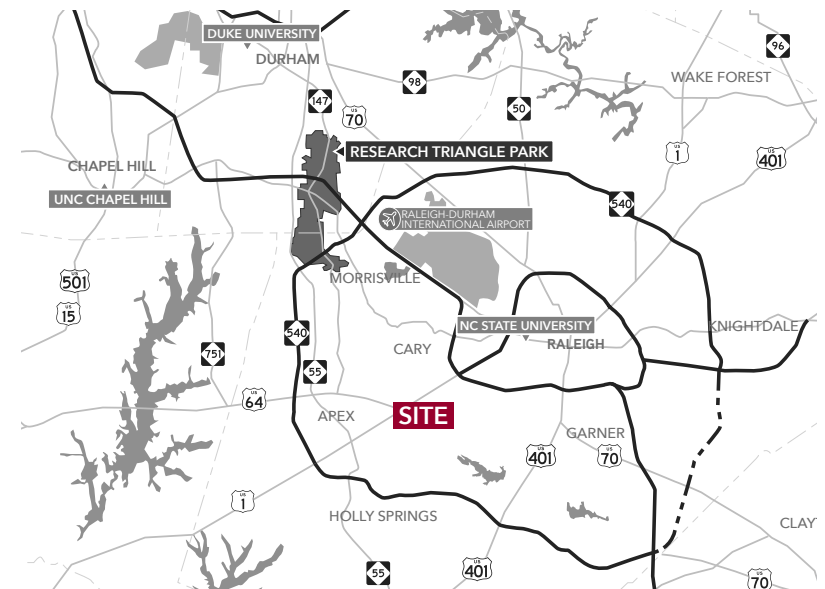
Suite 200 at 56 Hunter Street offers 2,613 RSF of well-appointed second-generation office space in one of Apex's most visible and convenient locations. The suite features a functional mix of private offices, collaborative workspace, and client-facing areas designed to support a variety of professional office users. Positioned directly across from the Town of Apex government complex, the property provides excellent accessibility and proximity to Downtown Apex amenities.

LOCATION DESCRIPTION

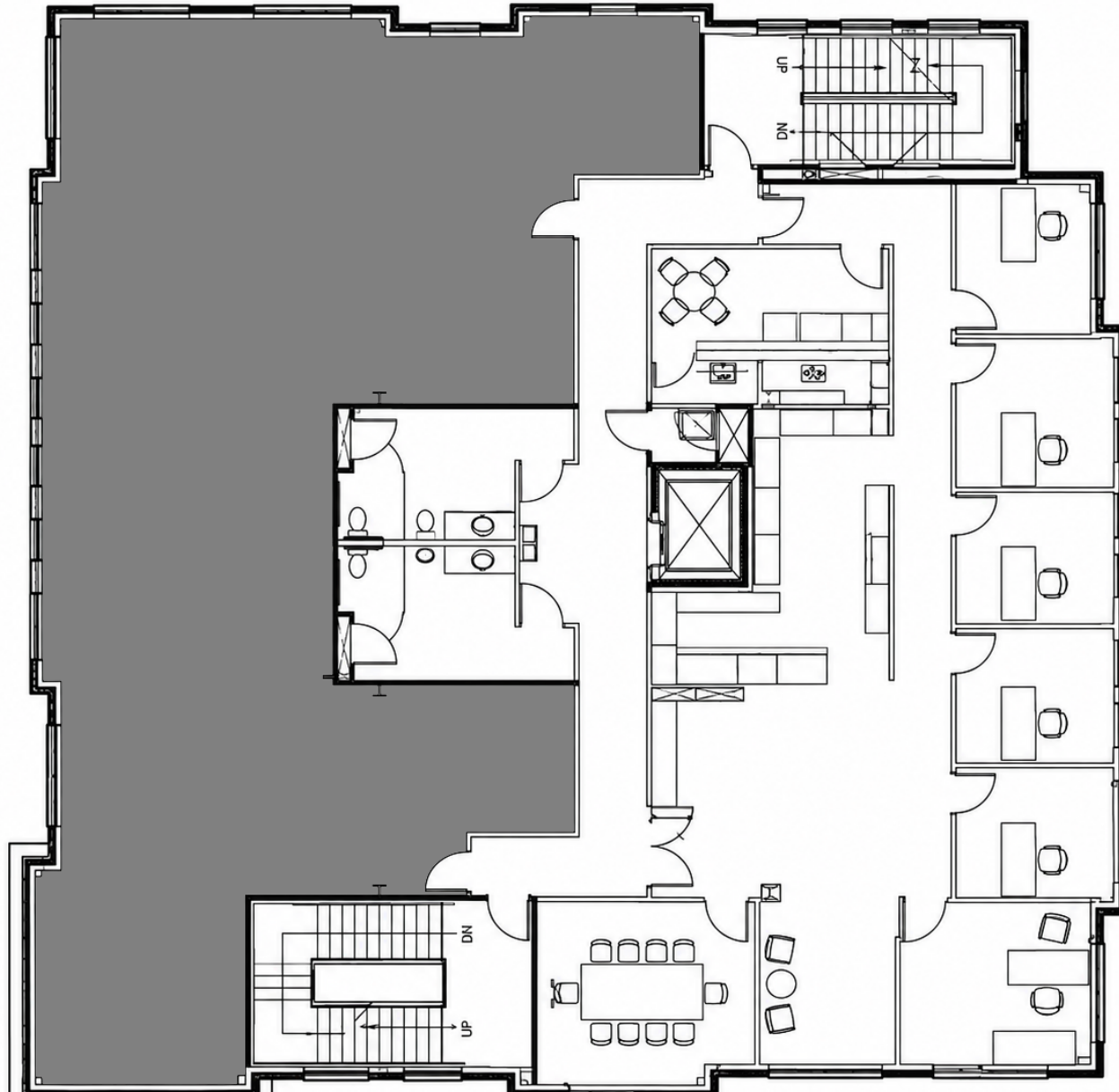
Conveniently located near Downtown Apex, 56 Hunter Street offers walkable access to nearby restaurants, retail, and services with quick connectivity to US 64 and US 1. The property sits directly across from the Town of Apex government complex in a highly visible location.

PROPERTY HIGHLIGHTS

- » 2,613 RSF second-generation office suite available for lease
- » Move-in ready
- » Efficient layout with (6) private offices and open workroom
- » Reception/lobby area and dedicated conference room
- » Break area/kitchen with common restrooms on floor
- » Open floor plan suitable for collaborative work environments
- » Suite and directory signage available
- » 4.0 per 1,000 SF parking ratio
- » Highly visible location near Downtown Apex
- » Directly across from the Town of Apex government complex
- » Convenient access to US 64 and US 1 highways
- » **LEASE RATE: \$28.50/SF/yr, Full Service**



FLOOR PLAN



SUITE 200
2,613 RSF

OFFICE FOR LEASE | 56 HUNTER ST | APEX, NC 27502

AREA OVERVIEW



OFFICE FOR LEASE | 56 HUNTER ST | APEX, NC 27502

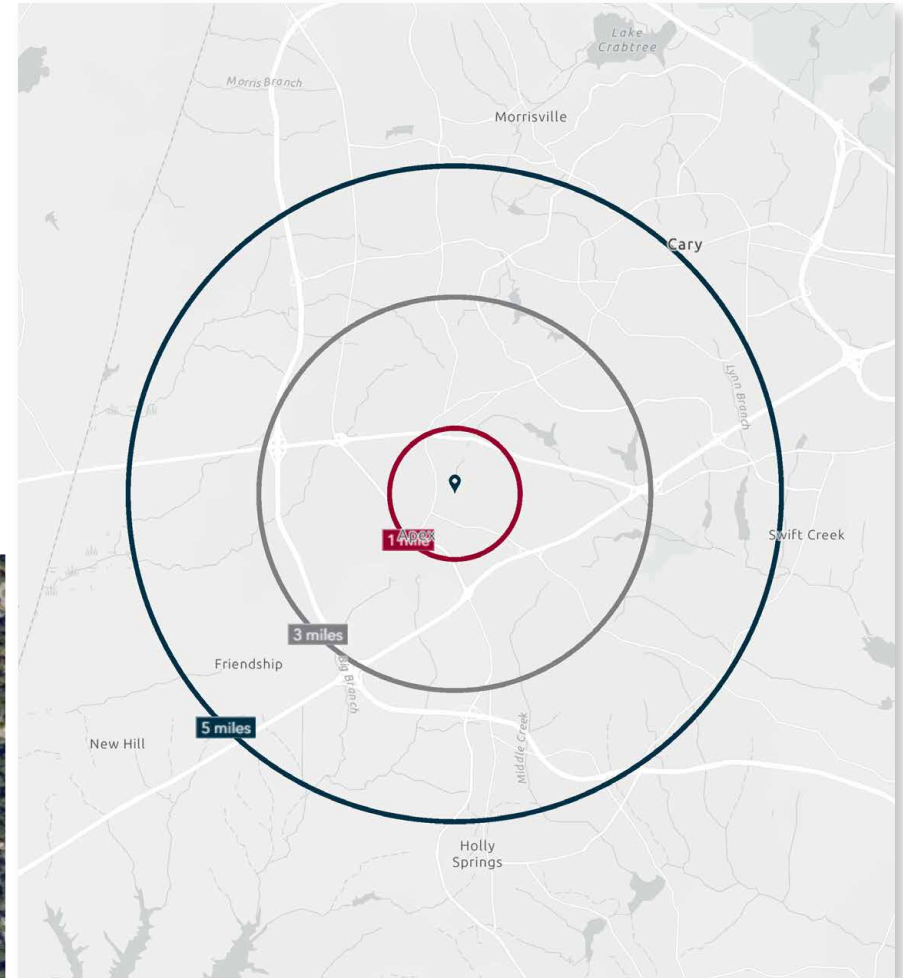
AREA OVERVIEW



OFFICE FOR LEASE | 56 HUNTER ST | APEX, NC 27502

DEMOGRAPHICS

	1 MILE	3 MILES	5 MILES
Population (2025)	8,796	65,352	178,683
Daytime Population	9,530	69,468	176,995
Average Home Value	\$529,597	\$593,861	\$639,064
Average Household Income	\$164,799	\$178,040	\$183,673
Median Age	39.5	39.9	40.1
Bachelor's Degree or Higher	66.0%	69.4%	71.8%
Total Businesses	576	2,654	6,716
Total Employees	5,191	28,109	64,545



#1 BEST
County to live in NC (Wake)
 Stacker, 2024

#2 HOTTEST
Real Estate Market (Raleigh)
 US News & World Report, 2024

#3 BOOMTOWN
in North Carolina (Apex)
 News & Observer, 2024

FOR LEASING INQUIRIES, CONTACT:

KARAH JENNINGS MCCONNELL

Executive Vice President, Principal

O: 919.576.2502

C: 919.817.0705

kjennings@lee-associates.com

MOSS WITHERS, SIOR, MBA

CEO & Principal

O: 919.576.2501

mwithers@lee-associates.com



COMMERCIAL REAL ESTATE SERVICES
RALEIGH • DURHAM • WILMINGTON

All information furnished regarding property for sale, rental or financing is from sources deemed reliable, but no warranty or representation is made to the accuracy thereof and same is submitted to errors, omissions, change of price, rental or other conditions prior to sale, lease or financing or withdrawal without notice. No liability of any kind is to be imposed on the broker herein.

100 WALNUT STREET | CARY, NC 27511 | 919.576.2500 | LEERALEIGH.COM