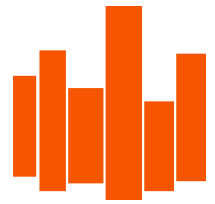


# The Troy Centre: Office Space For Lease

2095 West 6<sup>th</sup> Ave., Ste. 208-209 Broomfield, CO



## Property Highlights

- Central Broomfield location
- 2 common conference rooms available
- Open spacious restrooms w/ showers on both levels
- T-1, DSL & Comcast available
- On site management
- Just west of Hwy. 287, easy access
- Easy access to Hwy. 36, Hwy 287 and NW Parkway
- 30 minute drive to DIA via NW Parkway

## Details:

**Lease Rate: Negotiable, modified gross.**

**\*Suites 208-209: 3,976 RSF**

9 offices with 7 windowed offices. Reception area, conference room, storage / utility room & copy / file room. Excellent western views, common area conference rooms, men's and women's showers.

Exclusively represented by Vista Commercial Advisors Chip McReynolds  
303-974-7600 ext. 2 or [mcreynolds@vistacommercial.com](mailto:mcreynolds@vistacommercial.com)

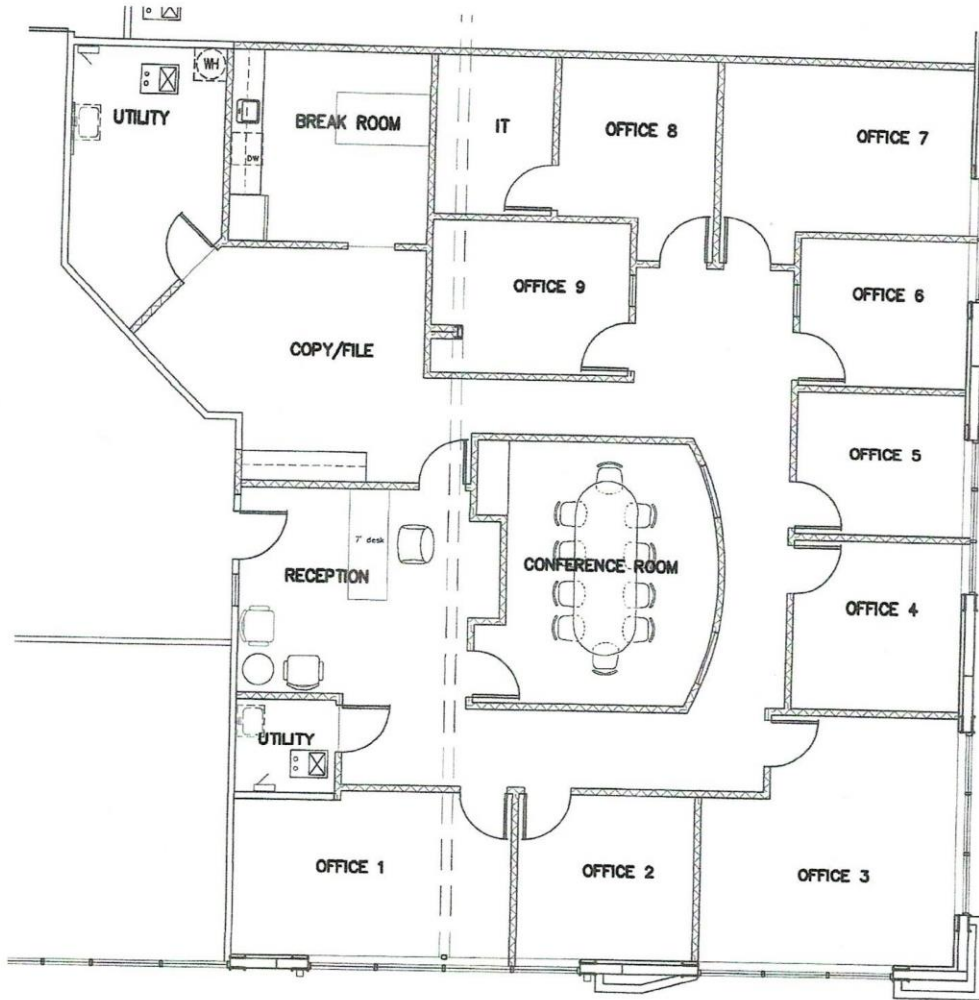


**VISTA COMMERCIAL ADVISORS INC.**

[www.vistacommercial.com](http://www.vistacommercial.com) • 520 Courtney Way, Suite 100, Lafayette, Colorado 80026 • 303-974-7600

*Commercial Real Estate Advisory Services*

**Suite 208-209 3,976 RSF**



COMPLETE HOME HEALTH CARE  
TROY CENTRE – SUITE 209



**VISTA COMMERCIAL ADVISORS INC.**

www.vistacommercial.com • 520 Courtney Way, Suite 100, Lafayette, Colorado 80026 • 303-974-7600

*Commercial Real Estate Advisory Services*