

AVAILABLE FOR SUBLEASE

2025 GATEWAY PLACE, SUITE 328 | SAN JOSE, CA

**LEE &
ASSOCIATES**
COMMERCIAL REAL ESTATE SERVICES



EXCLUSIVE AGENT:

Ben Jones, Principal

E \| bjones@lee-associates.com

P \| 510.903.7606 | LIC# 01758720

Lee & Associates Oakland Commercial Real Estate \| 555 12th Street, Suite 1725, Oakland, CA 94607 \| www.lee-associates.com

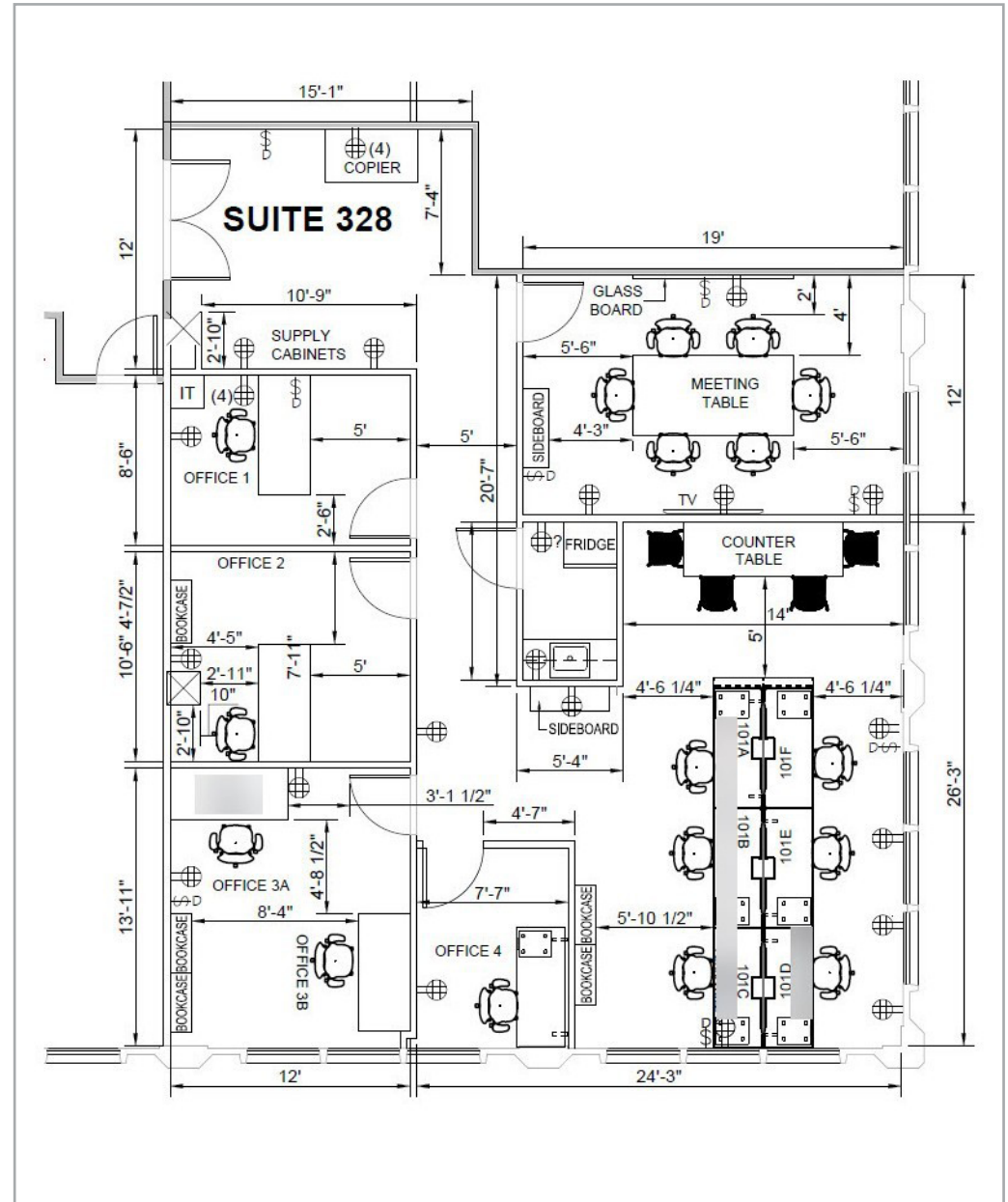
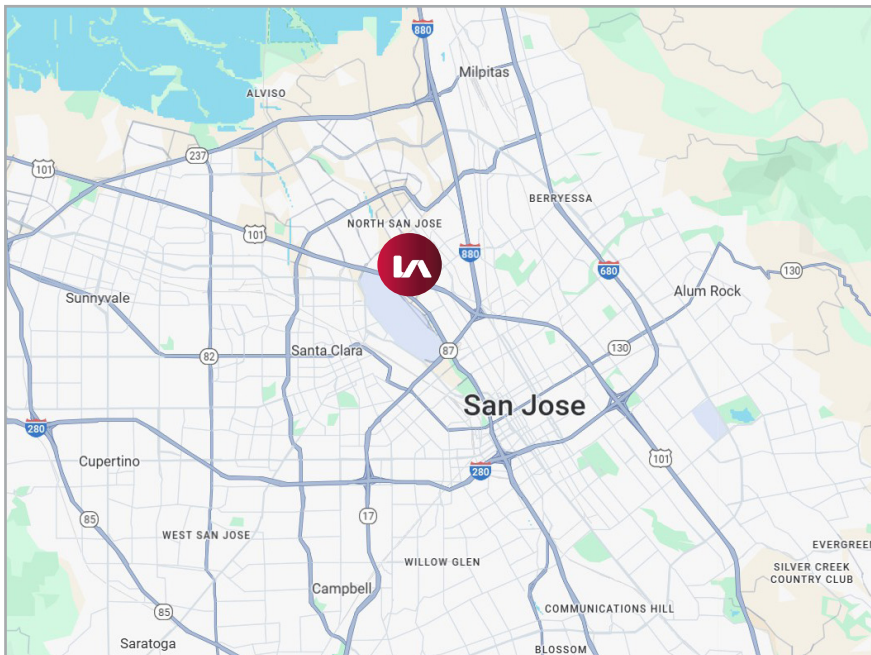
All information furnished regarding property for sale, rental or financing is from sources deemed reliable, but no warranty or representation is made to the accuracy thereof and same is submitted to errors, omissions, change of price, rental or other conditions prior to sale, lease or financing or withdrawal without notice. No liability of any kind is to be imposed on the broker herein.

AVAILABLE FOR SUBLEASE

2025 GATEWAY PLACE, SUITE 328 | SAN JOSE, CA

FEATURES:

- 1,805± SF
- Plug and Play – Furniture can be included.
- 4 Private Offices
- Conference Room
- Break Room
- Excellent Natural Light
- Ample Parking
- LED: 12/31/2028
- Call Exclusive Agent for Pricing



AVAILABLE FOR SUBLEASE

2025 GATEWAY PLACE, SUITE 328 | SAN JOSE, CA



Lee & Associates Oakland Commercial Real Estate \ 555 12th Street, Suite 1725, Oakland, CA 94607 \ www.lee-associates.com

All information furnished regarding property for sale, rental or financing is from sources deemed reliable, but no warranty or representation is made to the accuracy thereof and same is submitted to errors, omissions, change of price, rental or other conditions prior to sale, lease or financing or withdrawal without notice. No liability of any kind is to be imposed on the broker herein.