



FOR LEASE

OFFICE SPACE

Property Highlights

- 1,667 ± SF available
- \$21.00/SF MG
- Tenant improvement allowance negotiable
- Amenities include an on-site fitness center, mother's room, and bike storage
- Steps away from Osage Park's trails, food trucks, pickleball courts, dog parks, and more
- Less than 1.5 miles from the New Walmart Home Office and Sam's Club HQ
- Parking Ratio 4/1000

For more information, please contact:

Stephanie Farmer

+1 479 845 3022

sfarmer@sagepartners.com

Olivia Funderburk

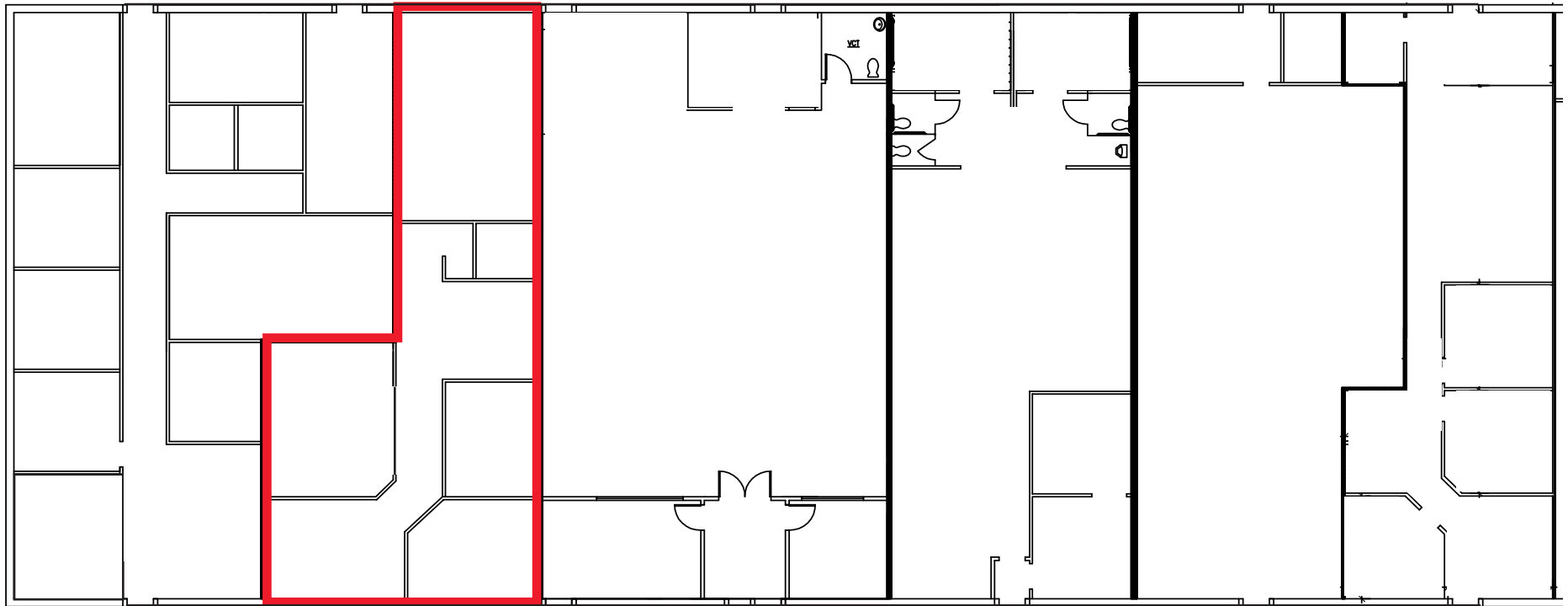
+1 417 818 6875

ofunderburk@sagepartners.com

479 845 3000

sagepartners.com

*information deemed reliable but not guaranteed



SUITE 1

SUITE 3

SUITE 7

SUITE 9

SUITE 11

SUITE 13

