



WESTCHASE CORPORATE PARK

11201-11331 RICHMOND
AVE



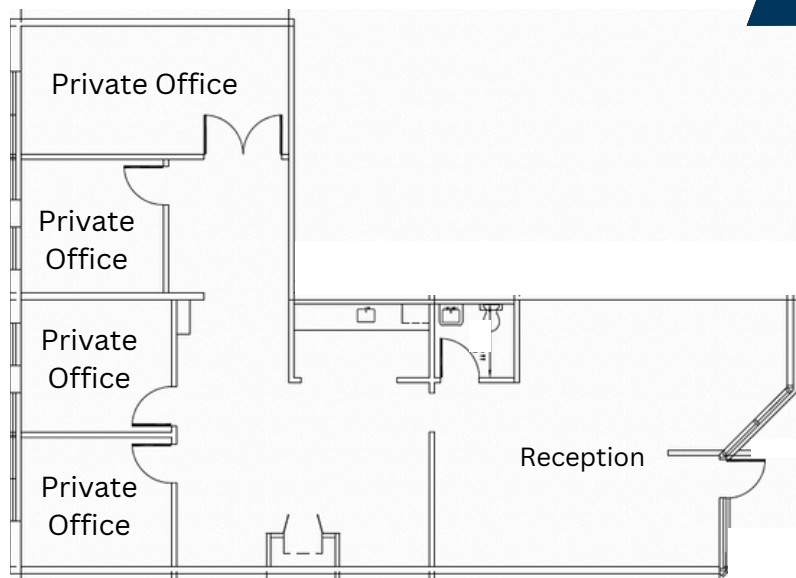
ANNIE TARWATER
713.668.2369
atarwater@mcmanagement.com

DAN MEYER
713.668.2369
danmeyer@mcmanagement.com



11301 RICHMOND AVE

SUITE K109
1,776 SF



Suite Layout

- 1,776 SF
- Tenant controlled HVAC
- 4 private offices
- Drive up access
- Conveniently located with direct access to Beltway 8 and Westpark Tollway

