

# Drive-Thru Restaurant

1,500-3,000 SF Available

177 South Milford Road  
Milford, Michigan 48381

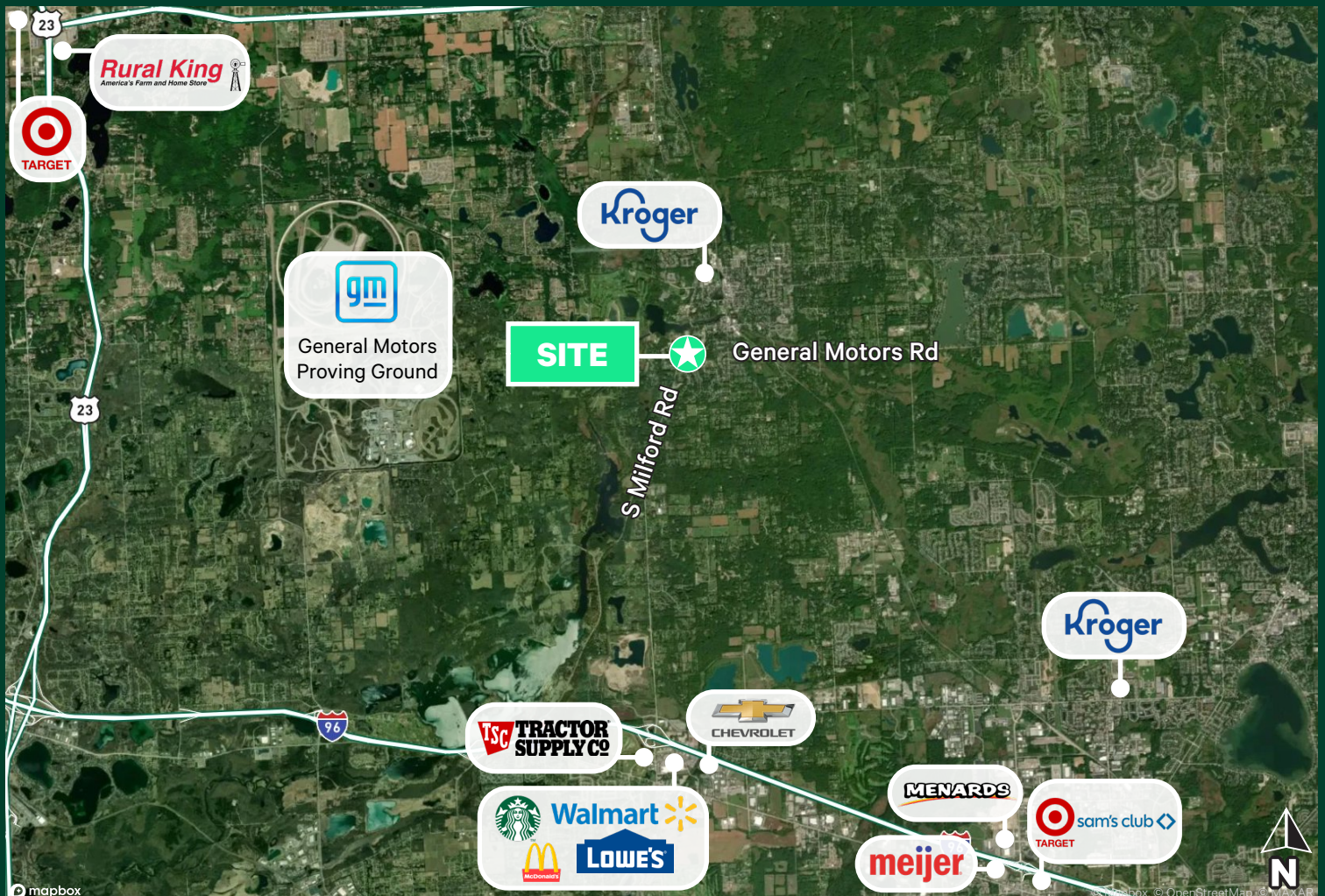
Join Planned Chipotle Across from Starbucks and Planet Fitness



# Property Highlights

- + 1,500-3,000 SF available
- + Join planned Chipotle across from Starbucks and Planet Fitness
- + 1.65 acre lot, with 2 curb cuts, and signalized intersection in front of property
- + Located along S Milford Rd with traffic counts exceeding 15,000 vehicles per day
- + Nearby retailers include Kroger, Planet Fitness, Starbucks, McDonald's, Taco Bell, and many more
- + 71 parking spaces
- + **Lease Rate: Contact Broker**

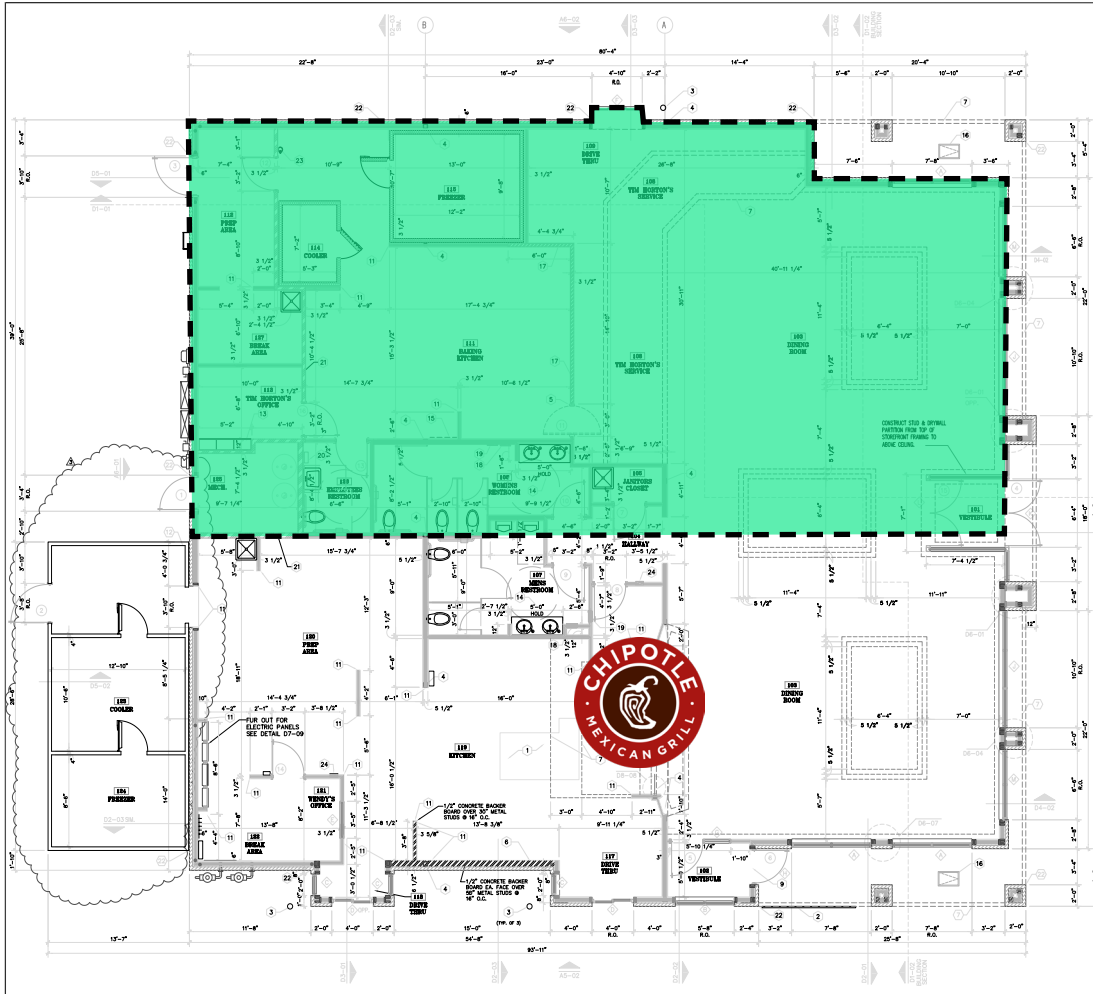
# Macro Aerial



# Property View



# Floor Plan



**GENERAL NOTES:**

1. INTERIOR DIMENSIONS ARE FROM FACE OF STUD TO FACE OF STUD. ALL INTERIOR PARTITIONS ARE 2X8 BRICK STUDS AT 16" O.C. UNLESS NOTED OTHERWISE. METAL STUDS MAY BE SUBSTITUTED, BUT ALL DIMENSIONS MUST BE MAINTAINED.
2. EXTERIOR DIMENSIONS ARE FROM OUT TO OUT OF FINISHED SHINGLES. ALL EXTERIOR WALLS ARE 2X8 BRICK STUDS AT 16" O.C.
3. STAINLESS STEEL PANELS ON CONCRETE BLOCKS SHOULD BEHIND ALL COOKING EQUIPMENT TO EXPOSE IT FROM SIDE OF EQUIPMENT (ALL SURFACES BY OTHER SUPPLIER'S SPECIFICATIONS).
4. G.C. TO SUPPLY AND INSTALL 1/2" FINISHED SHEATHING ON ALL EXTERIOR WALLS EXCEPT WHERE METAL STUDS ARE USED. (EXCEPT AS NOTED OTHERWISE).
5. REFER TO SHEET AN FOR DOOR SCHEDULES.

**KEYED NOTES:**

1. CONCRETE FND TO 4' AFT (SEE 5-1 FOR LOCATIONS)
2. STEEL ANCHORS SEE DETAIL 18-02
3. P/F STEEL WALLS SEE DETAIL 18-03
4. STEEL JOISTS SEE STRUCTURAL SHEETS
5. NO OFFICE RAMP AT JUMP. THE WALL ONLY.
6. CONCRETE STEEL PANELS THAT WILL BE USED. GENERAL NOTE 1 FOR MORE INFORMATION
7. GIFTY AREA
8. UNLESS INDICATED OTHERWISE, APPROXIMATE LOADS:
  - 9. GIFTY STEEL AND INSULATION ABOVE DOORWAY
  - 10. FLOORING SHALL HAVE COVER
  - 11. STAINLESS STEEL, SEE SEE SHEETS
  - 12. SEE 8 FOR ADDITIONAL INFORMATION
  - 13. ROOF ACCESS LAYOUT 7'-0" A.F.T. REFER TO DETAIL 18-01
  - 14. ELECTRICAL SYMBOLS
  - 15. FINAL DIMENSIONS TO BE DETERMINED BY CONTRACTOR. CHECK THIS SHEET FROM PERFORMER BEFORE BEGINNING WORK. CONTRACTOR TO VERIFY ALL DIMENSIONS TO BE DETERMINED UPON MEASUREMENTS.
  - 16. STAINLESS STEEL PANEL OVER CONCRETE BLOCKS SHOULD BEHIND METAL STUDS. CONTRACTOR TO VERIFY WITH OTHER SUPPLIER.
  - 17. 8" x 8" GALV. METAL STUDS @ 16" O.C. W/ 1/2" CONCRETE BLOCKS BENEATH, ETC.
  - 18. RECESSED ELECTRIC WIRE PANELS. SEE SHEET 18-01
  - 19. RECESSED CHANNEL STEEL TRUSS SUPPORTS. SEE SHEET 18-01
  - 20. TRUSS SUPPORTS. SEE SHEET 18-01
  - 21. 2X8 BRICK STUDS IN ACCORDANCE WITH SECTION 18000 AND CONTRACTOR TO VERIFY WITH OTHER SUPPLIER. REFER TO DETAIL 18-01 FOR ADDITIONAL INFORMATION
  - 22. EXPANDED JOINT
  - 23. SURFACE FINISHES TO BE DETERMINED BY CONTRACTOR. VERIFY EXACT LOCATIONS WITH THE SUPPLIER.
  - 24. RECESSED THE EXTERIOR WALLS AND CORNERS. SEE SHEET 18-01

WALL LEGEND	
	WOOD STUDS
	BRICK TO STRUCTURAL FRAME
	8" x 16" or 8" x 18" GALV. METAL STUDS AT 16" O.C. UNLS.
	BRICK VENEER. SEE SECTIONS 18-000
	LOW WOOD STUD PARTITION. REFER TO DETAILS.
	2X8 BRICK STUD IN ACCORDANCE WITH SECTION 18000. REFER TO DETAIL 18-01 FOR ADDITIONAL INFORMATION.
	PRE-MANUFACTURED COOLER WALLS.

FLOOR PLAN  
SCALE: 1/4" = 1'-0"

REVISIONS:  
1. 10/1/2010

**SHREMESHOCK**  
Shremeshock Architects, Inc.  
177 S Milford Rd, Milford, MI 48381  
Tel: 313.487.1100  
www.shremeshock.com

**Tim Hortons**  
MODEL SH40 - COMBO  
177 S MILFORD RD  
VILLAGE OF MILFORD, MI

FLOOR PLAN  
DRAWN BY: MLL CHECKED BY: TJS

SAI  
DRAWING NUMBER:  
**AI**

## Contact Us

**Andy Sitto**  
Associate  
+1 248 936 6810  
andy.sitto@cbre.com

**Matt Croswell**  
First Vice President  
+1 248 351 2084  
matt.croswell@cbre.com

© 2025 CBRE, Inc. All rights reserved. This information has been obtained from sources believed reliable but has not been verified for accuracy or completeness. CBRE, Inc. makes no guarantee, representation or warranty and accepts no responsibility or liability as to the accuracy, completeness, or reliability of the information contained herein. You should conduct a careful, independent investigation of the property and verify all information. Any reliance on this information is solely at your own risk. CBRE and the CBRE logo are service marks of CBRE, Inc. All other marks displayed on this document are the property of their respective owners, and the use of such marks does not imply any affiliation with or endorsement of CBRE. Photos herein are the property of their respective owners. Use of these images without the express written consent of the owner is prohibited.