

**210 S Orange Avenue  
Bartow FL 33830**



**PREMIER**  
**REALTY**  
network, Inc.  
one of the PRN-Group of companies

**OFFERING MEMORANDUM**

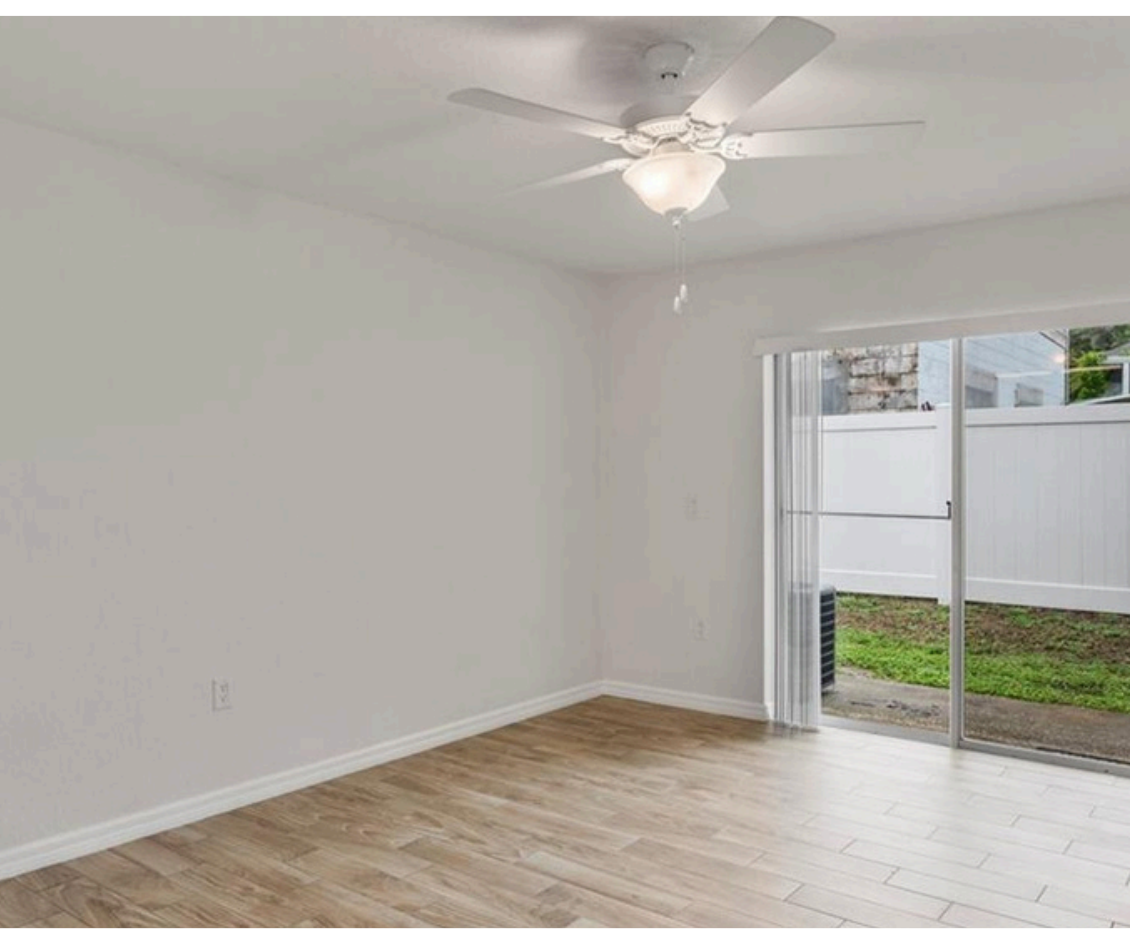
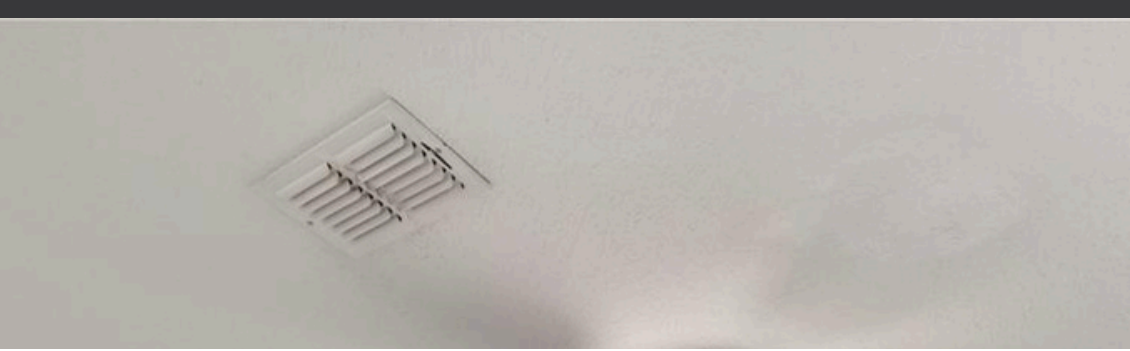
210 S ORANGE AVE  
BARTOW FL  
33830

---

## OVERVIEW

*Positioned for immediate returns, this income-producing 100% OCCUPIED- 10 UNIT complex offers a turnkey opportunity for investors looking to step into cash flow from day one. With tenants already in place, each unit AVERAGES- \$1440.00 per month, creating a strong and consistent revenue stream. Each unit is a well- designed 2 bedroom, 2 full baths (4 units) OR 3 bedroom -2 full baths (6 units) space featuring an open floor plan that maximizes space and functionality. Ceramic wood look tile flooring runs throughout all of the units- some with carpet & tile. All kitchens include breakfast bar seating along with a refrigerator, range, dishwasher, & disposal all included in the sale. The age of the roof's range from 2017 to 2019- Ac's newer. Tenants are responsible for all utilities, with only lawn care & exterior lighting covered by the owner, helping keep operating costs low and predictable. Located in THE CHARMING CITY of Bartow, this property provides quick access to local dining, shopping, and everyday conveniences, making it an attractive rental option that supports strong occupancy.*





S  
U  
M  
M  
A  
R  
Y

## OFFERING SUMMARY

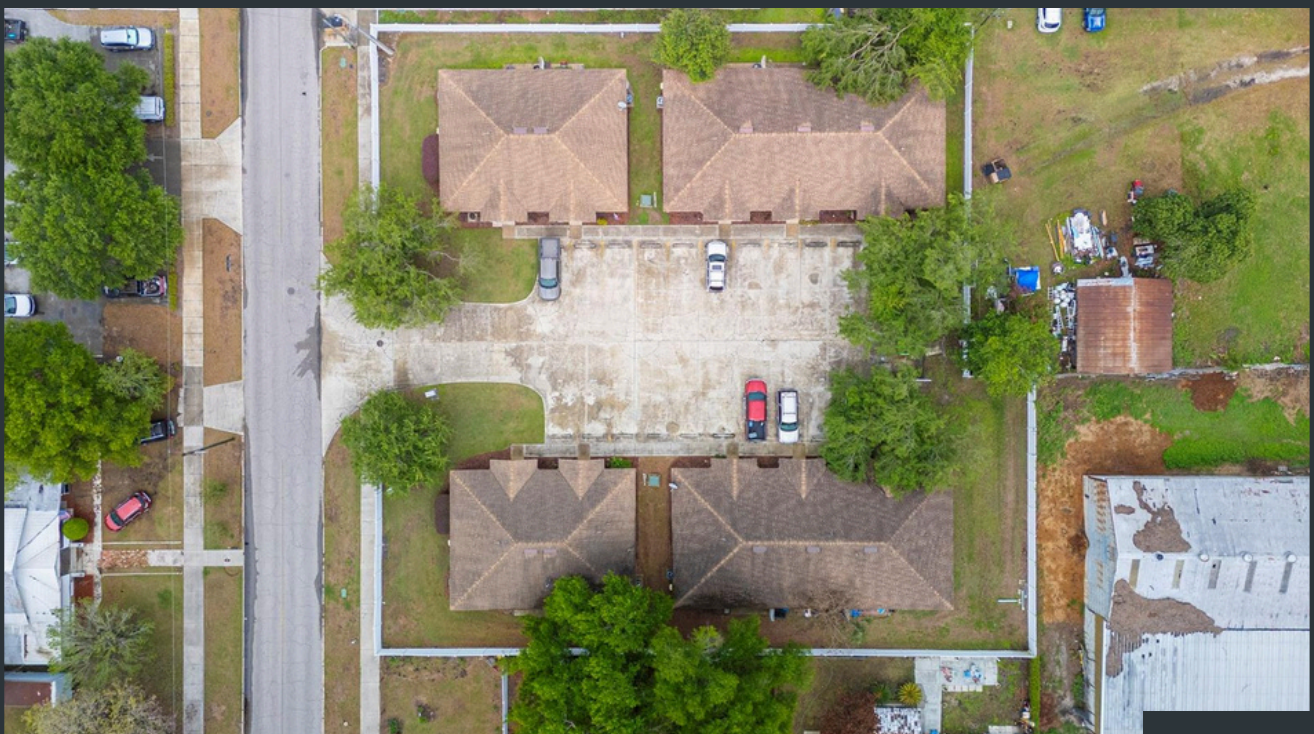
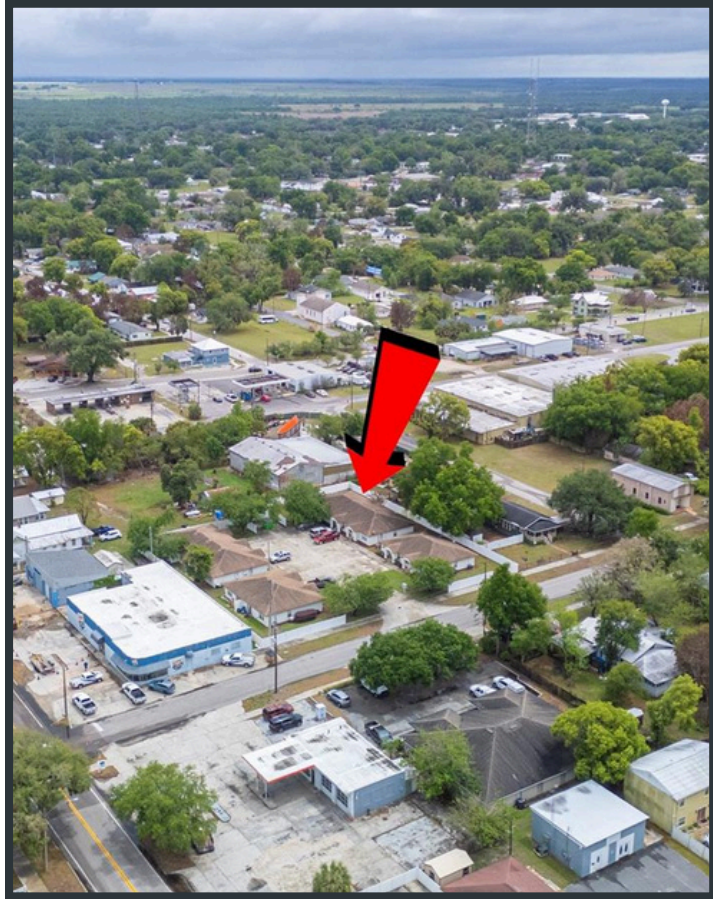
**\$**  
**Listing Price**  
**\$1,850,000**

  
**Lot Size**  
**0.82 Acres**

Listing Price	\$1,850,000
Lot Size	0.82 Acres (35,536 SF)
Building Size	9,994 Sq Ft
Zoning	R-3
Parcel ID	25-30-05-369000-000150
Occupancy	Occupied
Utilities	Public

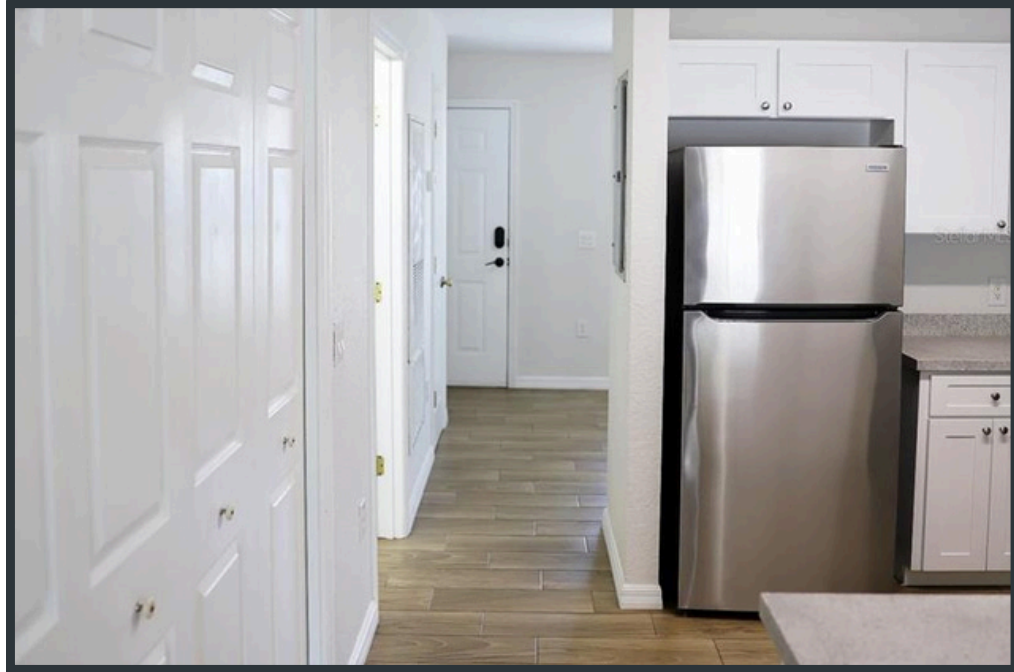
## ADDITIONAL FEATURES

- 6 3-Bedroom 2-Bath Units
- 4 2-Bedroom 2-Bath Units
- Roof Ages Range from 2017-2019
- A/C's are Newer



- Located in the city limits of Bartow
- Quick access to local dining, shopping, and everyday conveniences

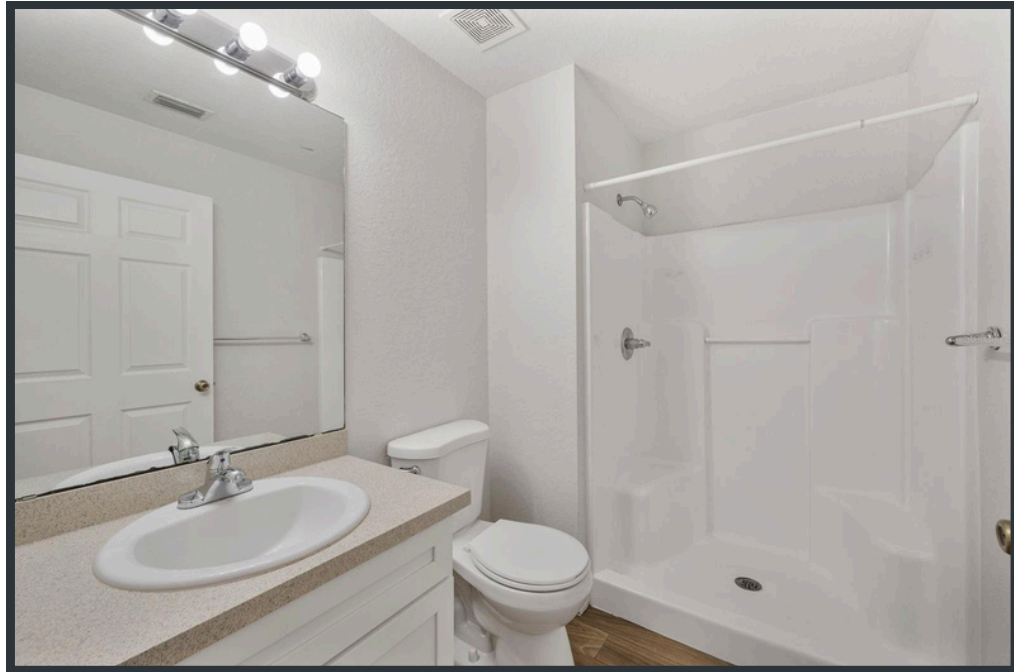
**AERIAL PHOTOS**



**INTERIOR PHOTOS**

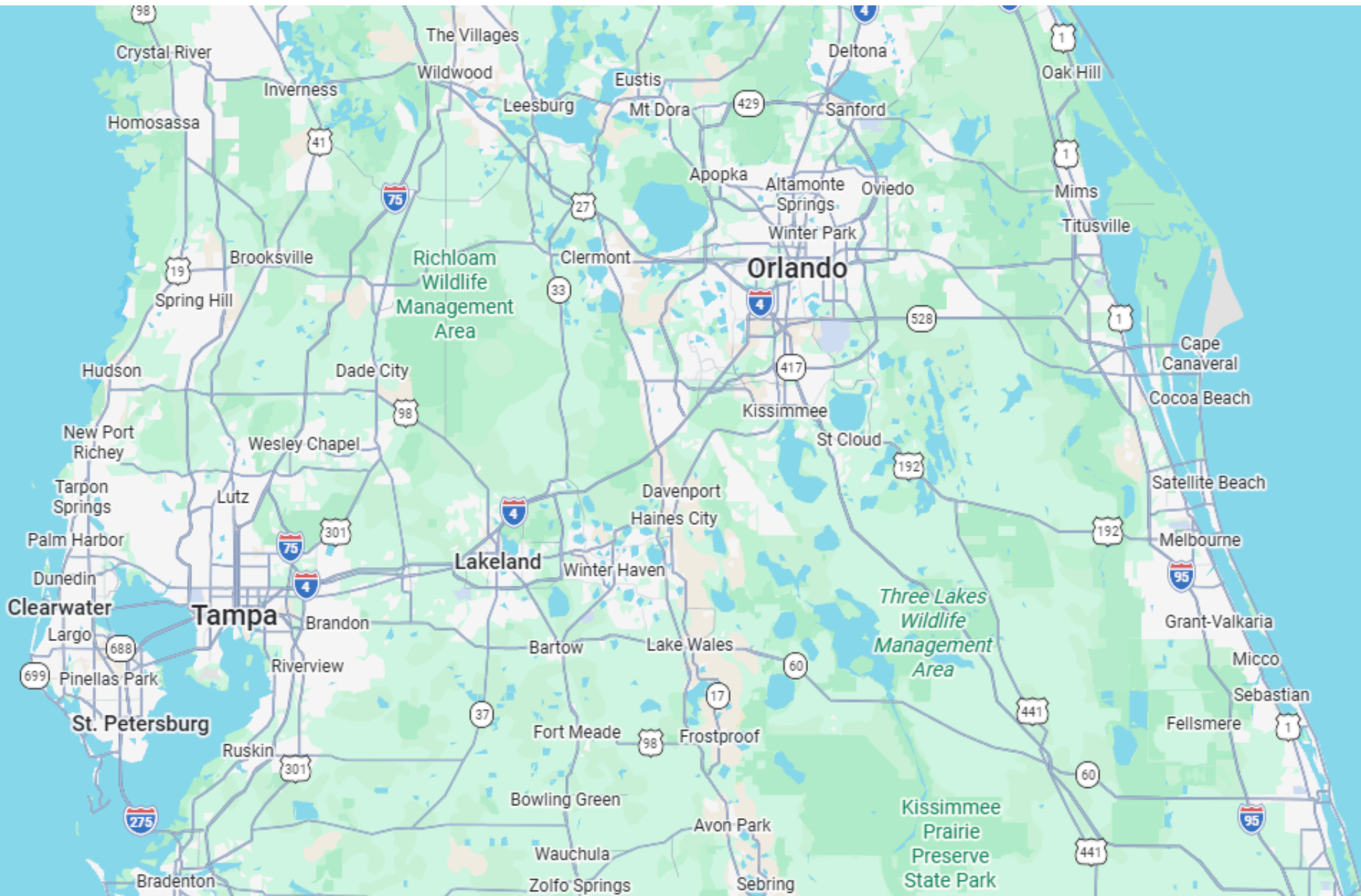


**INTERIOR PHOTOS**



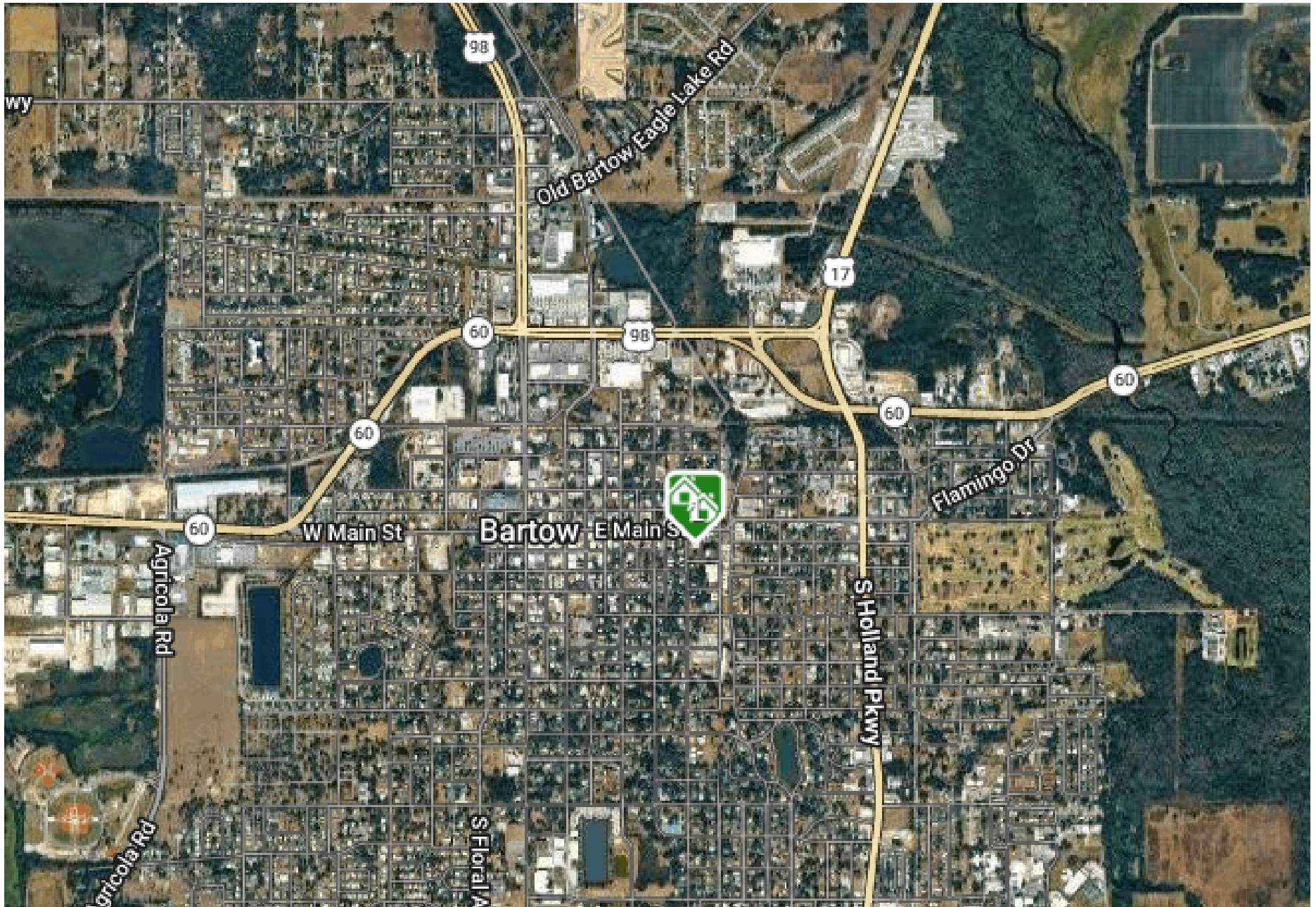
**INTERIOR PHOTOS**

# Regional Map



210 S Orange Ave

# Local Map



210 S Orange Ave

# Parcel Map



210 S Orange Ave

## *Revitalization Through Infrastructure*

Major investments in infrastructure and downtown redevelopment are shaping Bartow's next chapter. Streetscape improvements, business facade grants, and new civic projects are revitalizing the historic core, attracting both private capital and public interest. The city's focus on walkability and small business development reflects a broader strategy to retain talent and encourage entrepreneurship.

## *Strategic Location with Regional Impact*

Situated at the intersection of U.S. Highway 98 and State Road 60, Bartow offers seamless access to Tampa, Orlando, and coastal ports. Its central location, combined with proximity to the CSX rail line and Bartow Executive Airport, enhances its appeal for distribution, manufacturing, and agribusiness sectors.

*Source: City of Bartow Community Redevelopment Agency*

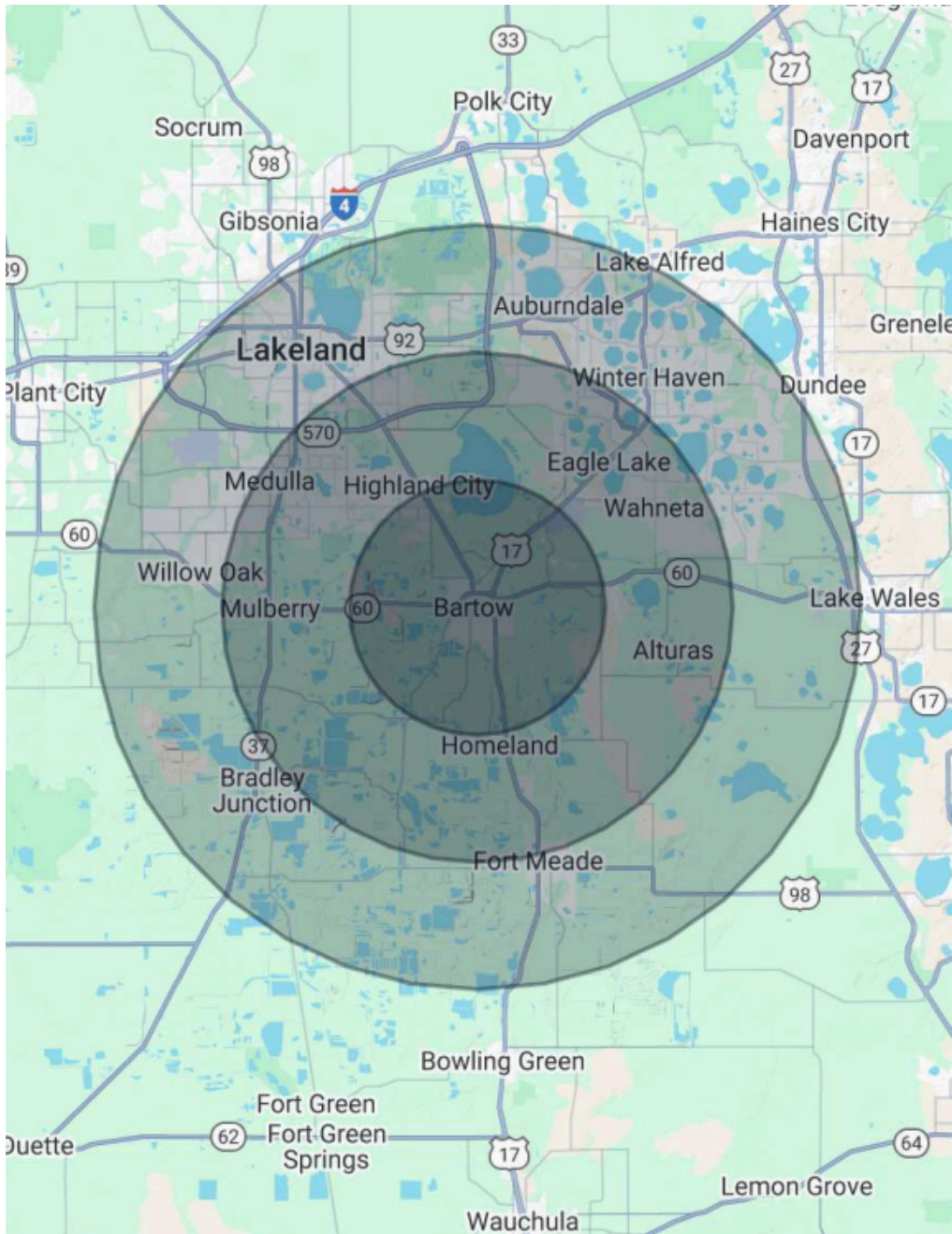


## *Bartow's Growing Economy*

Bartow continues to strengthen its position as a major government and industry hub in Central Florida. As the county seat of Polk County, it hosts major public employers, including the Polk County Courthouse, School Board, and Sheriff's Office, while also supporting nearby phosphate, agriculture, & logistics operations. This blend of public and private sector activity drives consistent job growth and economic stability.

*Source: Central Florida Development Council*

# Demographics



## Population

Total Population  
Average Age  
Average Age (Male)  
Average Age (Female)

	5 Miles	10 Miles	15 Miles
Total Population	29,574	167,718	412,162
Average Age	39	40	41
Average Age (Male)	38	39	40
Average Age (Female)	41	41	42

## Households & Income

Total Households  
# of Persons per HH  
Average HH Income  
Average House Value

	5 Miles	10 Miles	15 Miles
Total Households	10,681	61,783	157,012
# of Persons per HH	2.8	2.7	2.6
Average HH Income	\$85,944	\$95,085	\$85,268
Average House Value	\$289,557	\$306,558	\$281,008

*Demographics data derived from AlphaMap*

210 S Orange Ave

LISTED BY

**Jody Ciavardone**  
**Premier Realty Network, Inc.**

Realtor

Cellular: (863) 660-4922

Office: (863) 646-6688

Jody@PRN-Group.com

License # SL3327831

**PREMIER**  
 **REALTY**  
network, Inc.  
one of the PRN-Group of companies