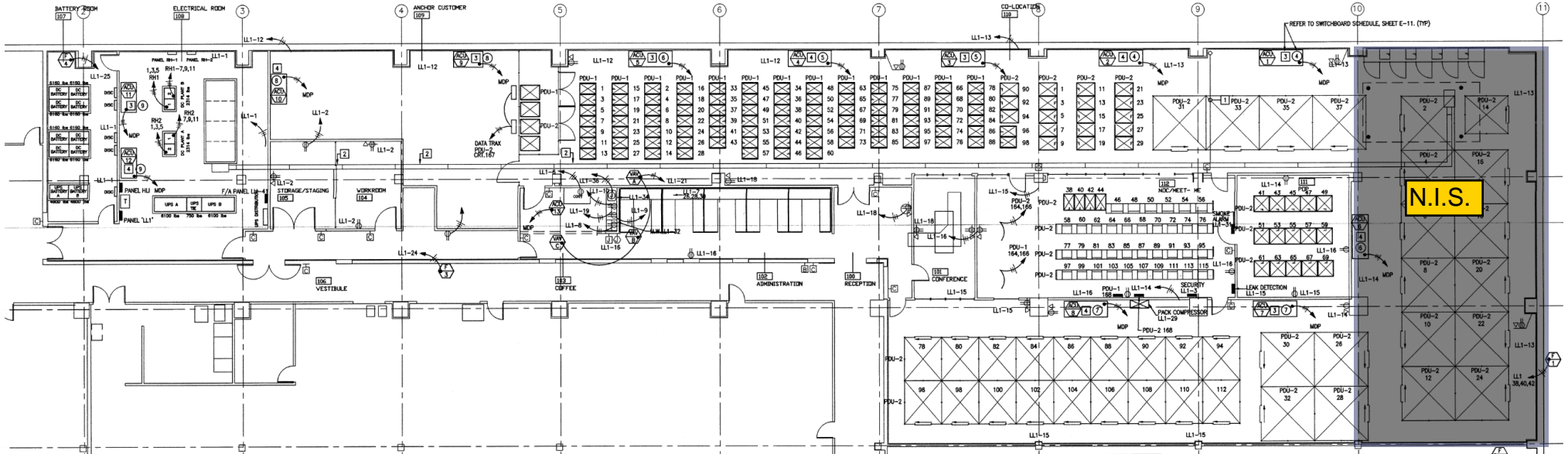
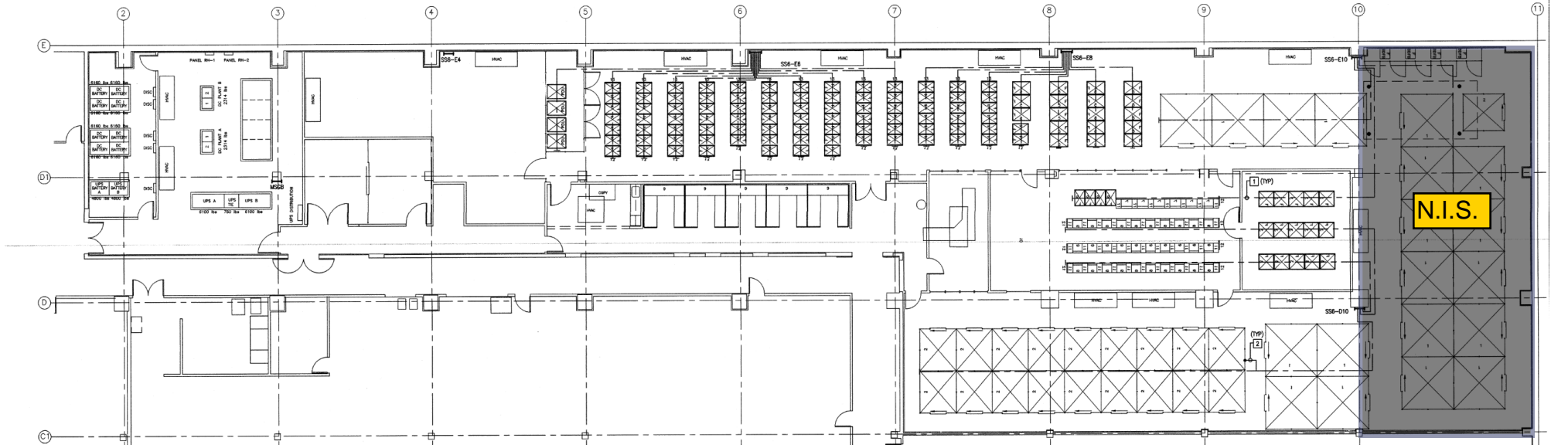


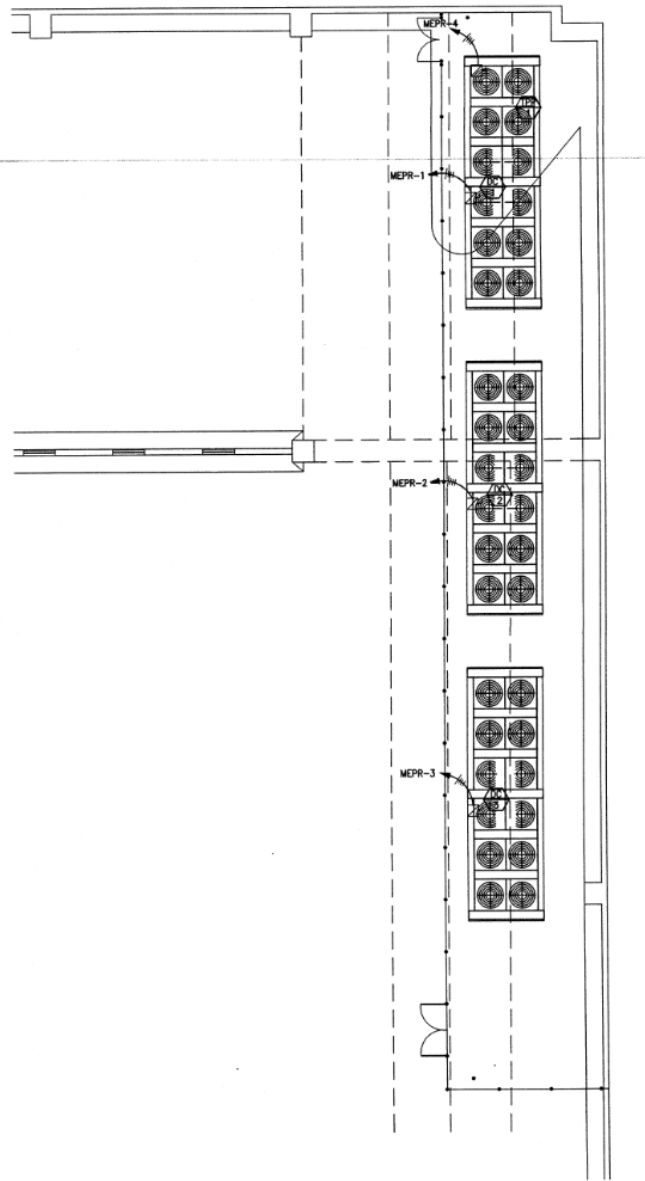
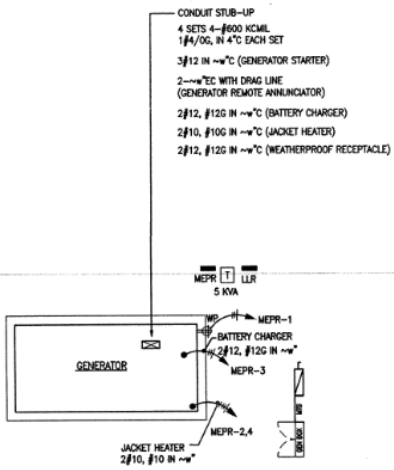
Floor Power

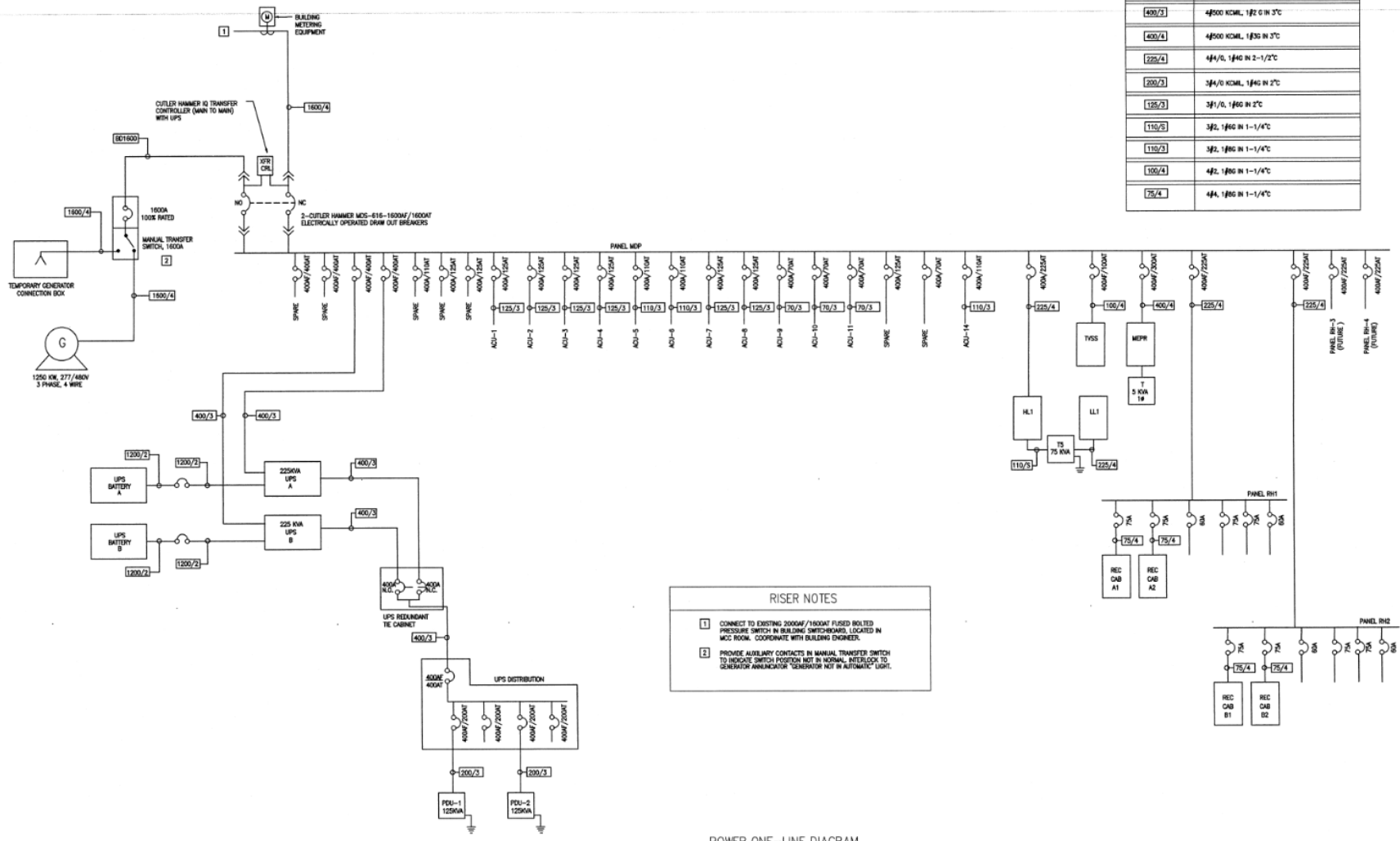


N.I.S.



N.I.S.





FEEDER SCHEDULE	
SYMBOLS	CONDUCTOR AND CONDUIT
1600/4	1600A BUS DUCT, 3A, 5W
1600/4	4 SETS - 4#600 KCMIL, 1 1/4" O D IN 4" C
2000/2	4 SETS - 2#350 KCMIL, 1 1/2" O D IN 2-4" C
400/3	4#500 KCMIL, 1 1/2" O IN 3" C
400/4	4#500 KCMIL, 1 1/2" O IN 3" C
225/4	4#4/0, 1 1/4" O IN 2-1/2" C
200/2	3#4/0 KCMIL, 1 1/4" O IN 2" C
125/3	3#1/0, 1 1/4" O IN 2" C
115/3	3#2, 1 1/4" O IN 1-1/4" C
110/3	3#2, 1 1/4" O IN 1-1/4" C
100/4	4#2, 1 1/4" O IN 1-1/4" C
75/4	4#4, 1 1/4" O IN 1-1/4" C

RISER NOTES

- CONNECT TO EXISTING 2000V/100KVA FUSED BOLTED PRESSURE SWITCH IN BUILDING SWITCHBOARDS, LOCATED IN MCC ROOM. COORDINATE WITH BUILDING ENGINEER.
- PROVIDE AUXILIARY CONTACTS IN MANUAL TRANSFER SWITCH TO INTERLOCK SWITCH POSITION NET IN NORMAL INTERLOCK TO GENERATOR ANNUNCIATOR "GENERATOR NOT IN AUTOMATIC" LIGHT.

POWER ONE-LINE DIAGRAM

