



Location

The premises are prominently situated on the North Quay and enjoy picturesque views over the harbour and quay area.

Accommodation

18-20 North Quay provides modern office accommodation which is served by an Otis lift and has gas fired central heating. The offices have a raised access floor system for cable management together with suspended ceilings and LED lighting.

Floor area, rent and car parking

Part first floor offices	1,708 sq ft
Part second floor offices	1,745 sq ft

The offices are available to lease at a commencing rent of £18.50 psf. There are onsite car parking spaces available at a rent of £1,450 pa per space.

Rents exclude service charge, rates, insurance and utilities.

Lease Terms

The premises are available by way of a new lease for a term of years to be agreed by negotiation on effective full repairing and insuring terms.

There will be upward only rent reviews at the end of every third year.

Possession

Occupation is available upon completion of legal formalities.

Legal Costs

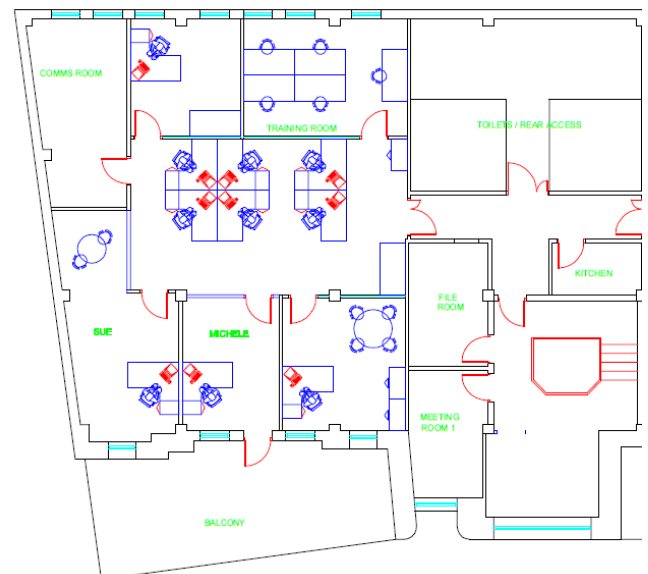
Each party will be responsible for their own legal costs incurred in the transaction.

Viewing

Strictly by appointment through Chapman & Co.



Part first floor



Part second floor

