



FOR LEASE

THE ATRIUM AT CHESTERFIELD

16305 SWINGLEY RIDGE RD
CHESTERFIELD, MO 63017



662 - 8,708 RSF Available



I-64 access and visibility



Monument Signage Available



4/1000 Garage Parking



Fitness center and storage space

Brandon Wappelhorst, CCIM, SIOR
bwappelhorst@sansonegroup.com

Tom Bajardi, CCIM, SIOR
tbajardi@sansonegroup.com

Nick Fiquette, CCIM, SIOR
nfiquette@sansonegroup.com

Property Features

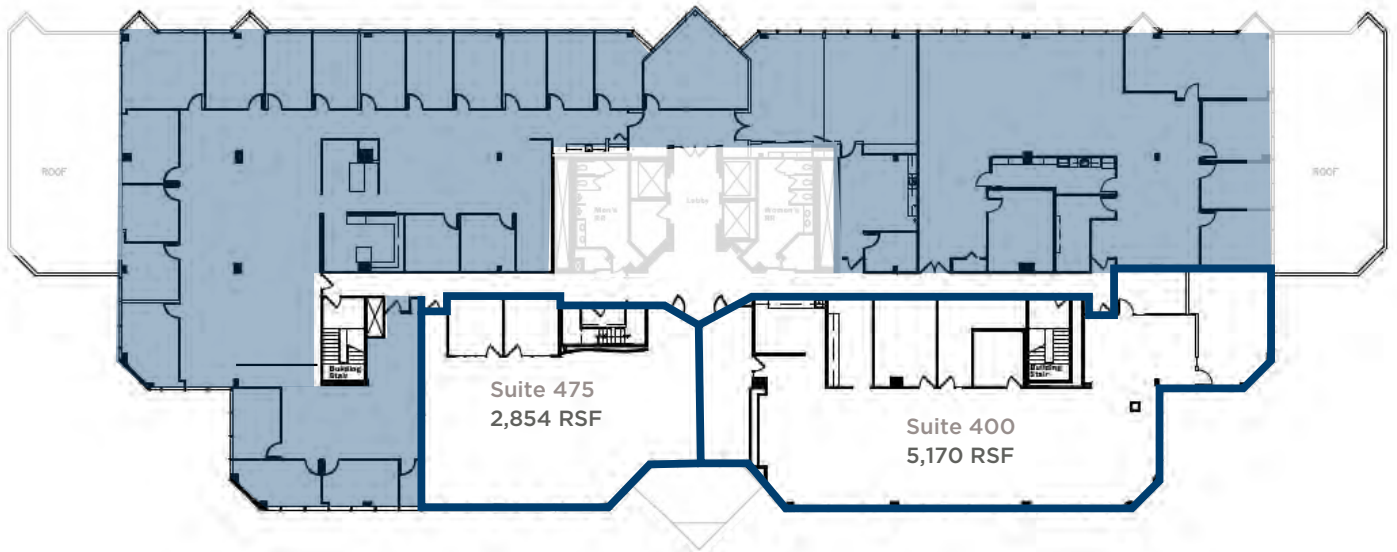
- Located in the heart of Chesterfield Village
- Fitness center and storage space
- Building & monument signage available
- I-64 access and visibility
- 4/1000 garage parking
- Owner Occupied / Debt Free

Availabilities

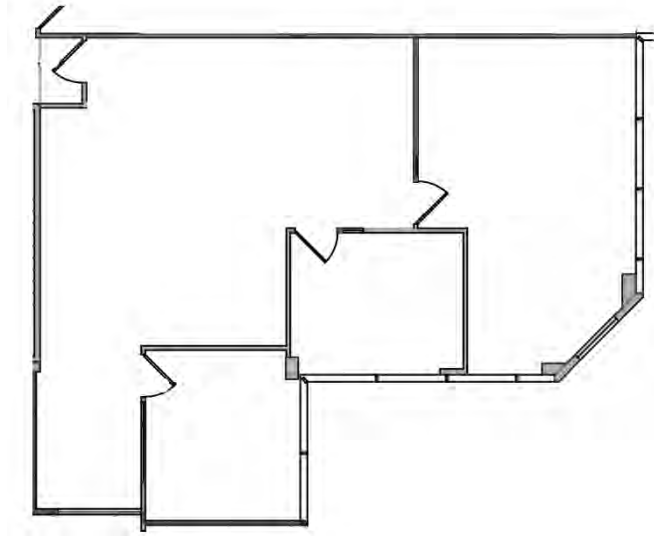
SUITE	RSF	
200	7,587	
220	662	
230	8,708	
300	1,455	
400	5,170	} 8,024
475	2,854	

Floor Plans

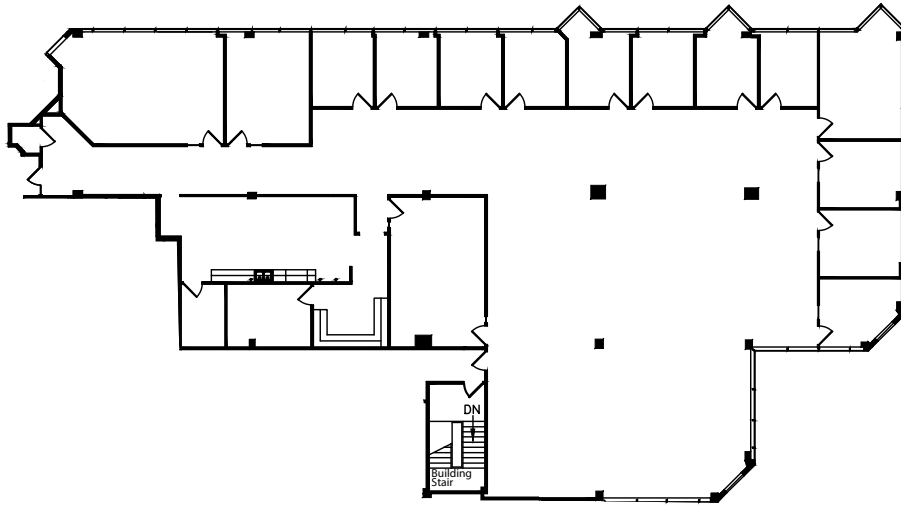
4th Floor | 8,024 RSF



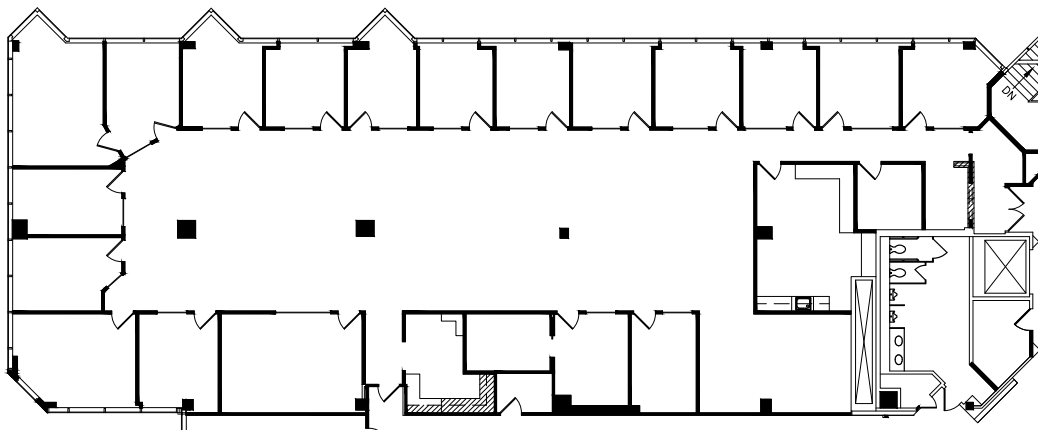
Suite 300 | 1,455 RSF

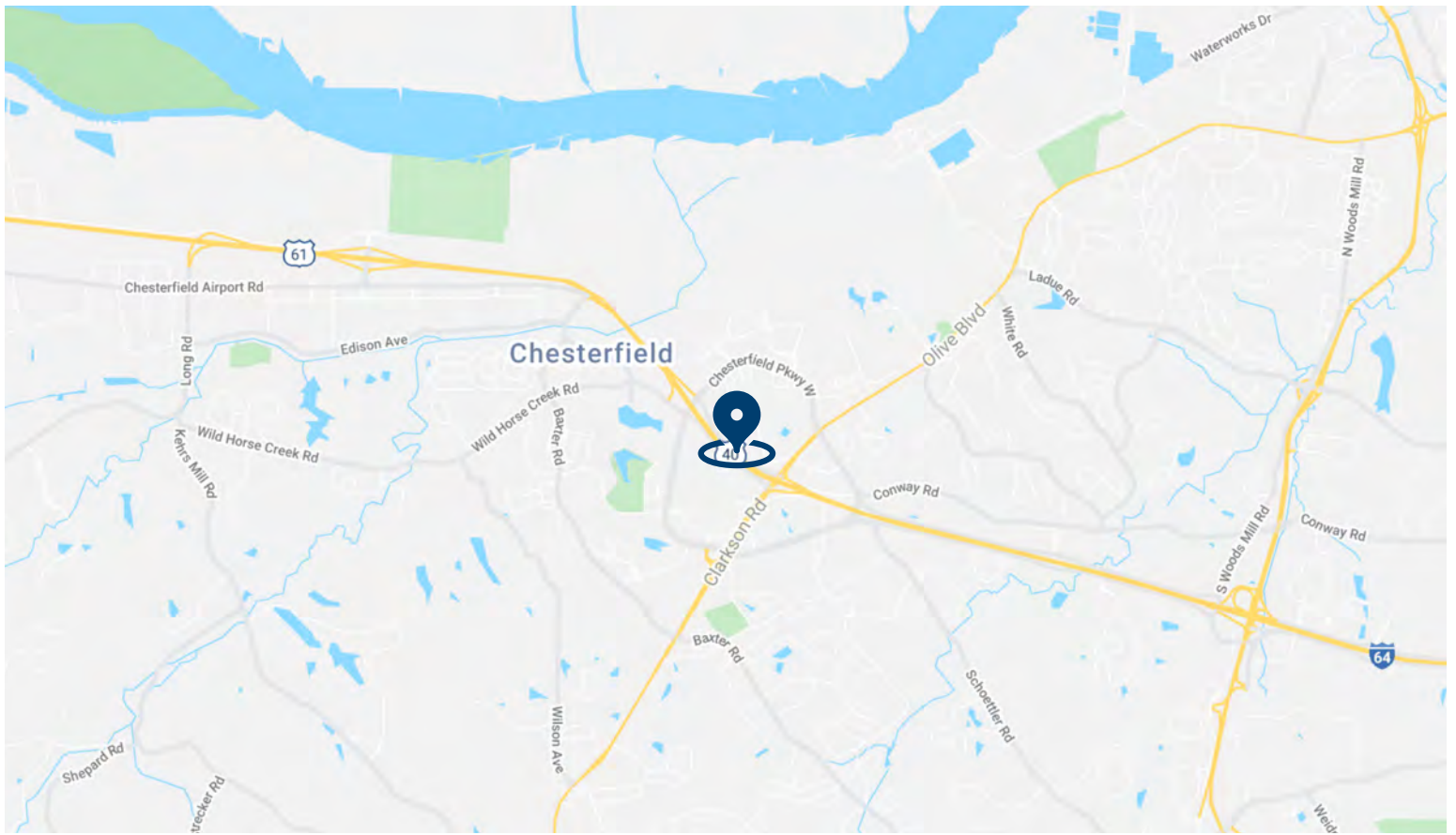


Suite 230 | 8,708 RSF



Suite 200 | 7,587 RSF





Tom Bajardi, CCIM SIOR
tbajardi@sansongroup.com

Brandon Wappelhorst, CCIM, SIOR
bwappelhorst@sansongroup.com

Nick Fiquette, CCIM
nfiquette@sansongroup.com



314.727.6664

SANSONEGROUP.COM

120 S. Central Ave. | Ste. 500 | St. Louis, MO 63105

The information contained herein is not warranted, although it has been obtained from the owner of the property or from other sources that we deem reliable. It is subject to change without notice. Seller and broker make no representation as to the environmental condition of the property and recommend purchaser's independent investigation.