



**MacArthur
Plaza**



**5525
N MACARTHUR BLVD,
IRVING, TX 75038**

NEWMARK

PROPERTY HIGHLIGHTS



Renovated Common Areas & Spec Suites



Convenient SH 114 ingress/egress



Monument Signage



Including deli

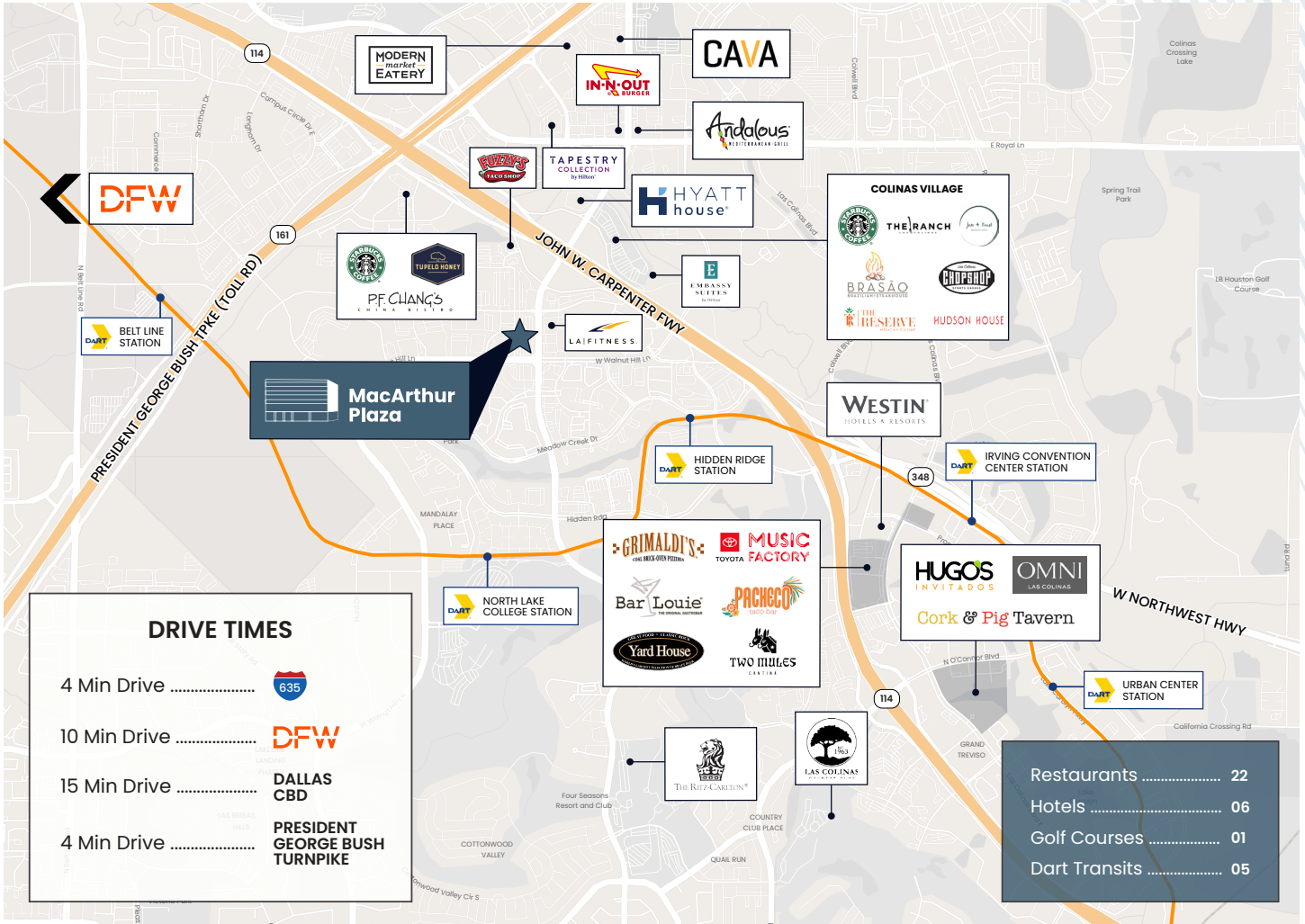


On-site amenities

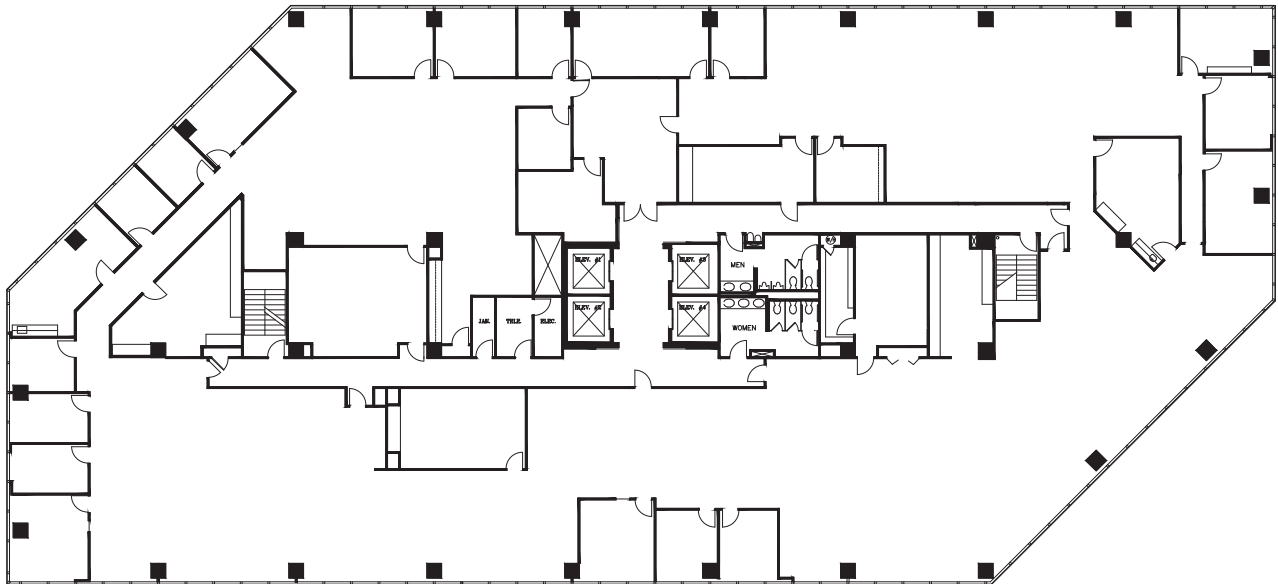
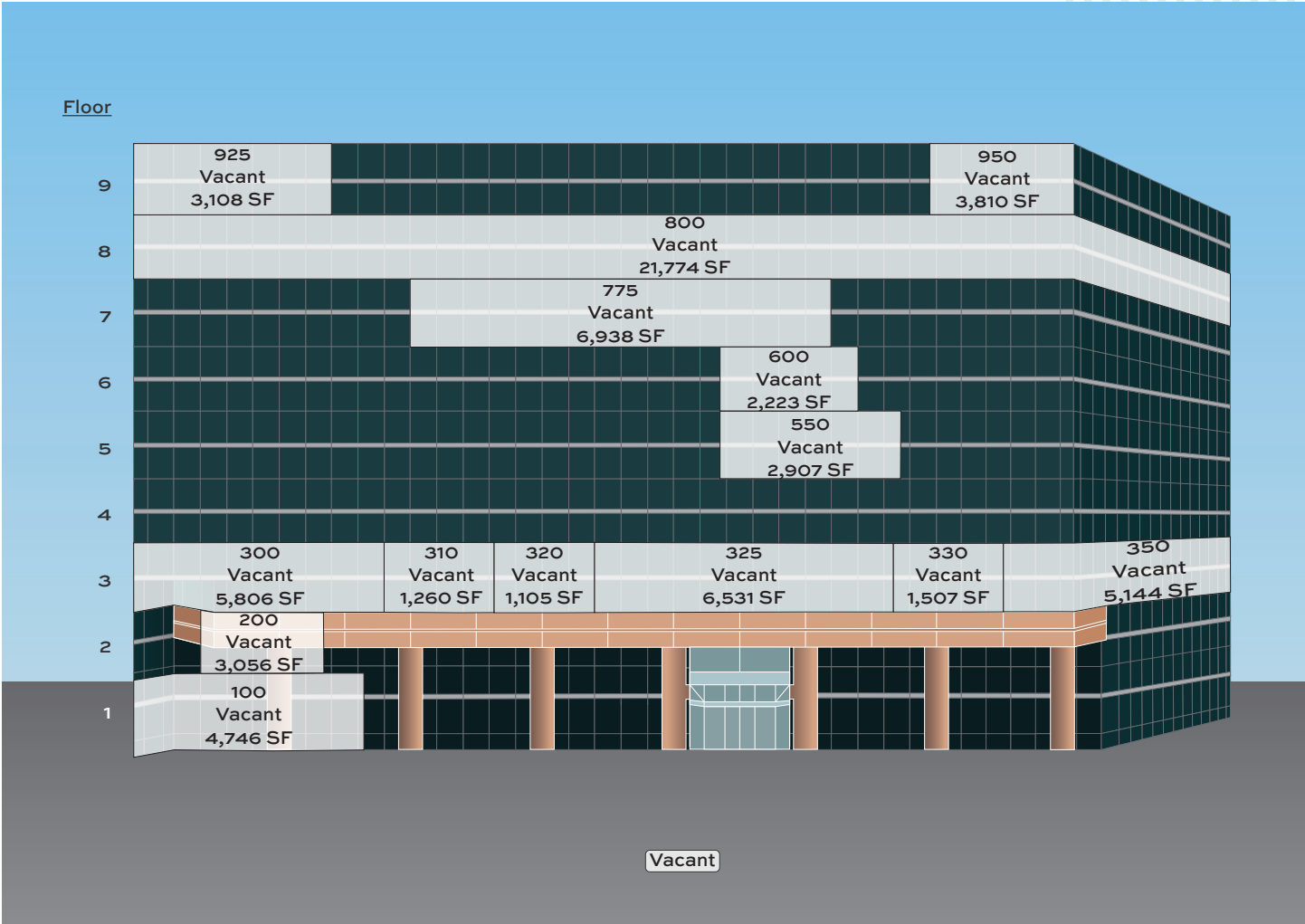


Covered Parking

AMENITY MAP



STACKING PLAN & FLOOR PLAN



Floor Size: 21,500 SF



CONTACT US:

Matt Hurlbut

Managing Director

t 972-998-1998

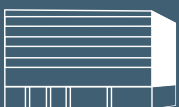
matt.hurlbut@nmrk.com

John Fancher

Senior Managing Director

t 214-616-4748

john.fancher@nmrk.com



**MacArthur
Plaza**

 **Brookwood**

NEWMARK