

For Lease
±2,176-7,282 SF
Medical Office Space



Coral Ridge Medical Plaza

5301 N Dixie Hwy
Oakland Park, FL 33334

Property Features

- Move-in ready space in the Oakland Park/Coral Ridge medical district
- Anchored by Tenet Healthcare AMSC and 1.5 miles to Holy Cross Hospital
- Additional lab space available for lease
- Covered porte-cochère for convenient patient drop-off and pick-up
- Minutes from I-95 and US-1, near popular dining and conveniences
- Surrounded by dense residential and strong demographics

For More Information:

Lesley Sheinberg, Managing Director
C: 561 254 7810 | lsheinberg@mhcreal.com

Key Features:



Great location in a thriving healthcare hub



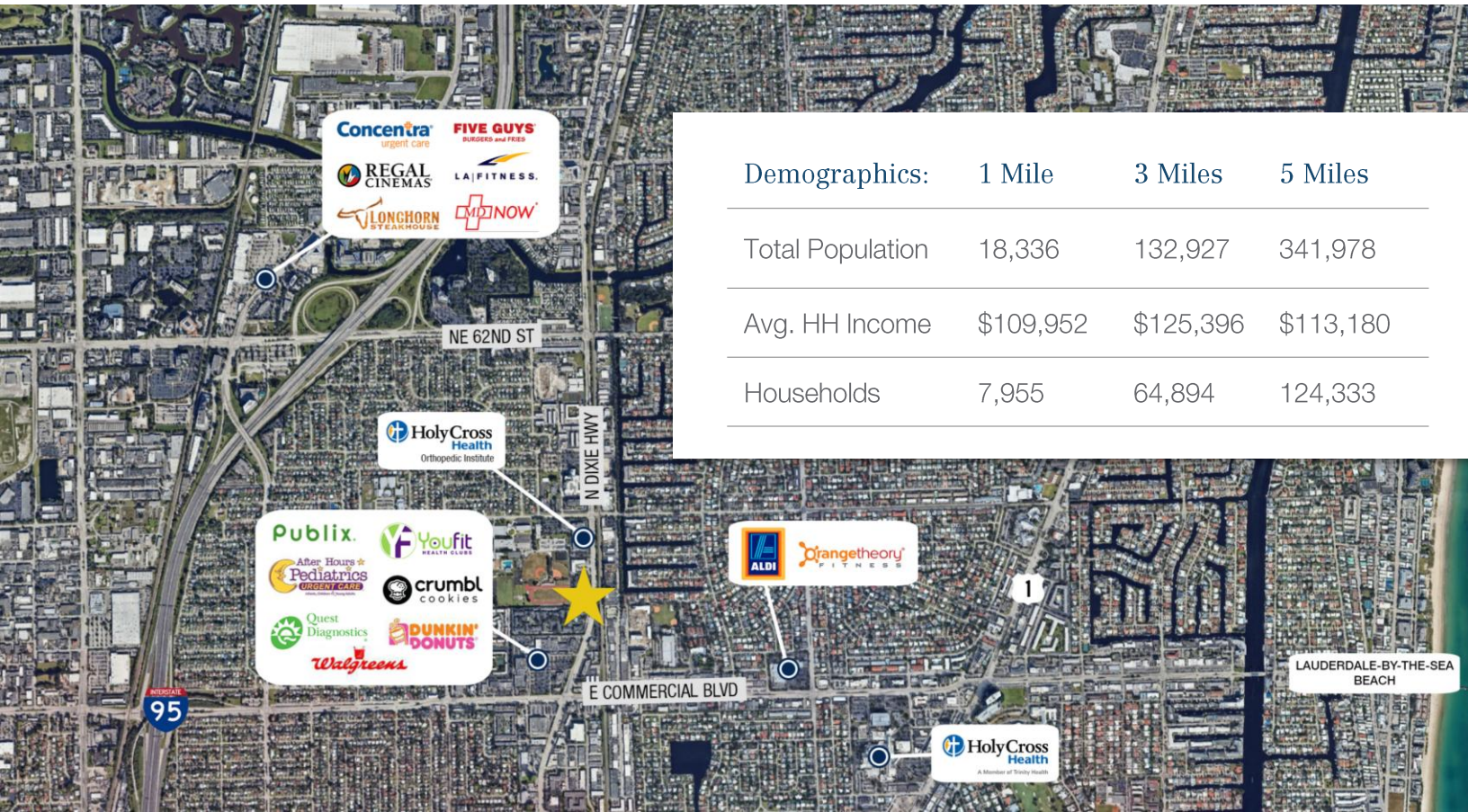
Move-in ready space



Excellent parking ratio 5.19/1,000 SF

FOR LEASE: CORAL RIDGE MEDICAL PLAZA

Medical Office Space in a Healthcare Hub



Demographics:	1 Mile	3 Miles	5 Miles
Total Population	18,336	132,927	341,978
Avg. HH Income	\$109,952	\$125,396	\$113,180
Households	7,955	64,894	124,333

Proven Healthcare Demand with Built-In Patient Base

- Over \$534 million in annual healthcare spending within a 3-mile radius
- 25%+ of surrounding residents are age 65 and older – a key driver for ongoing medical services
- 132,000+ residents within 3-miles, with continued growth projected



Available Space:	Suite 201: ±5,106 SF Suite 202: ±2,176 SF
Rental Rate:	\$28.00/SF NNN \$16.00/SF Est. CAM (tenant responsible for electric; tenant controls & maintains HVAC)
Parking:	Ample surface parking (5.19/1,000 SF)

For More Information:

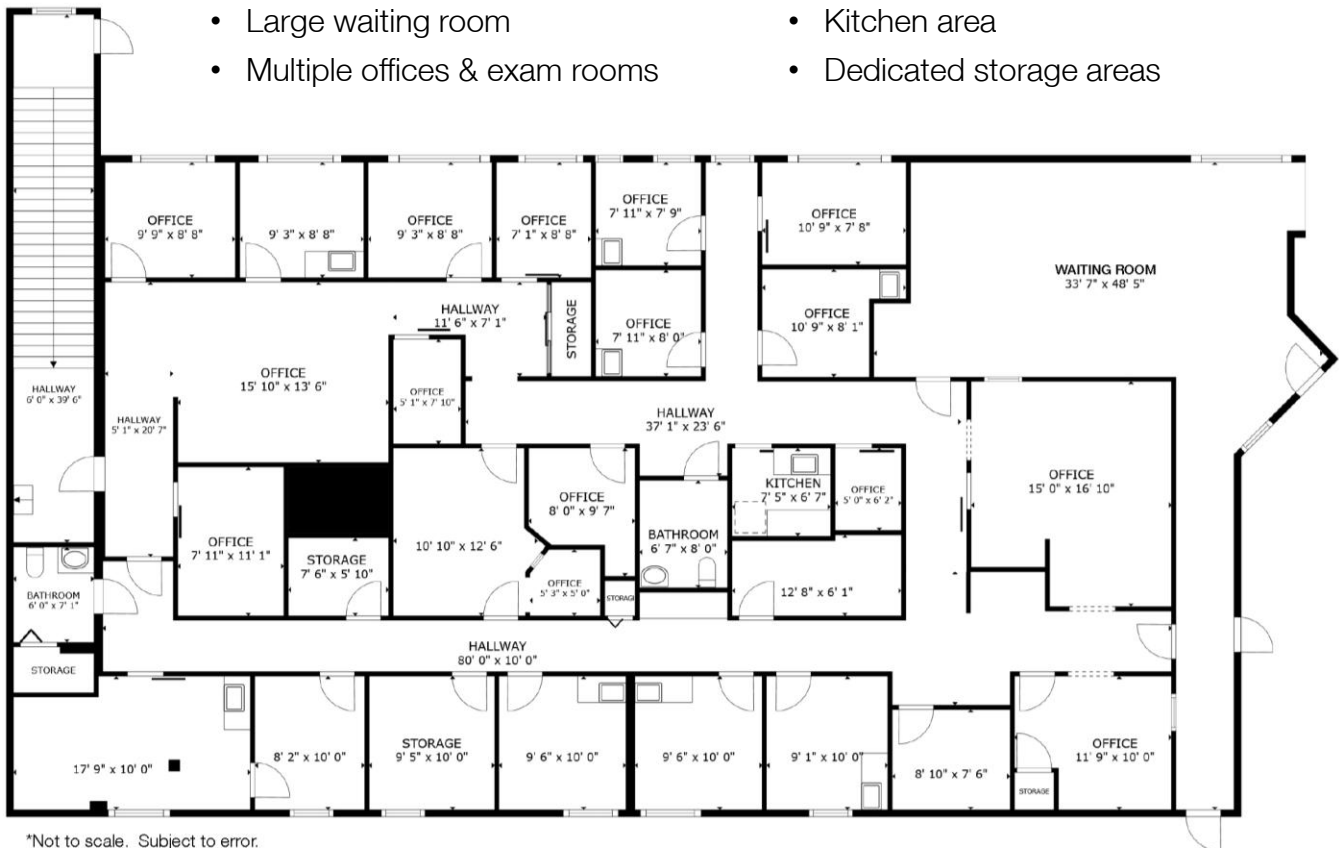
Lesley Sheinberg | lsheinberg@mhcreal.com
 Julia Piatek | jpiatek@mhcreal.com

FOR LEASE: CORAL RIDGE MEDICAL PLAZA

Move-In Ready Suites – Choose Your Layout

SUITE 201 ±5,106 SF

- Expansive floor plan
- Large waiting room
- Multiple offices & exam rooms
- In-suite restrooms
- Kitchen area
- Dedicated storage areas



For More Information:

Lesley Sheinberg | lsheinberg@mhcreal.com

Julia Piatek | jpiatek@mhcreal.com

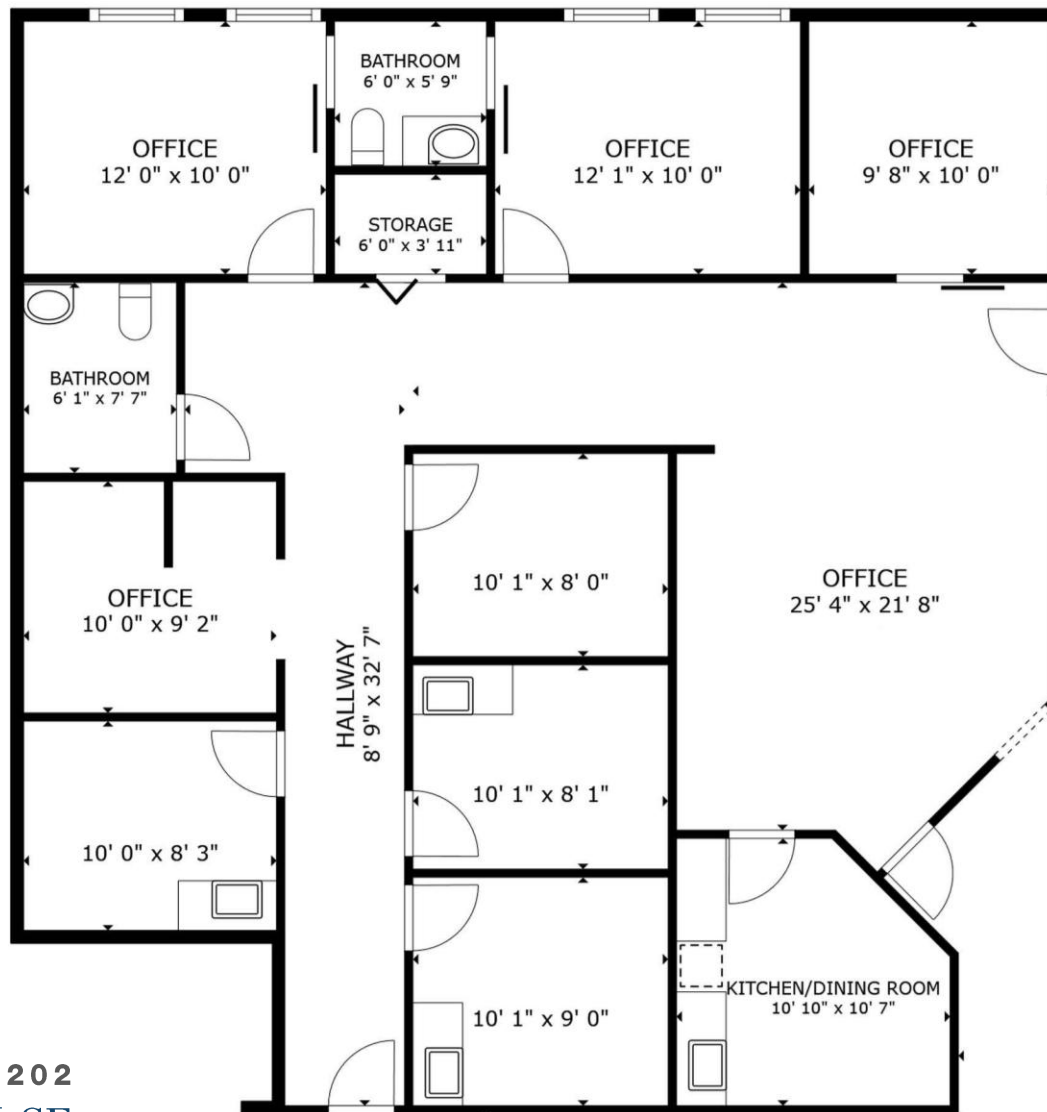


561 471 8000



www.mhcreal.com

FOR LEASE: CORAL RIDGE MEDICAL PLAZA
Move-In Ready Suites – Choose Your Layout



SUITE 202
±2,176 SF

*Not to scale. Subject to error.

- Multiple offices & exam rooms
- In-suite restrooms
- Breakroom/kitchen area

**SCHEDULE YOUR
TOUR TODAY!**
561 471 8000

For More Information:
Lesley Sheinberg | lsheinberg@mhcreal.com
Julia Piatek | jpiatek@mhcreal.com