

3810 N. Elm Street

Suite 102, Greensboro, NC 27455

OFFICE SPACE FOR LEASE



Property Overview

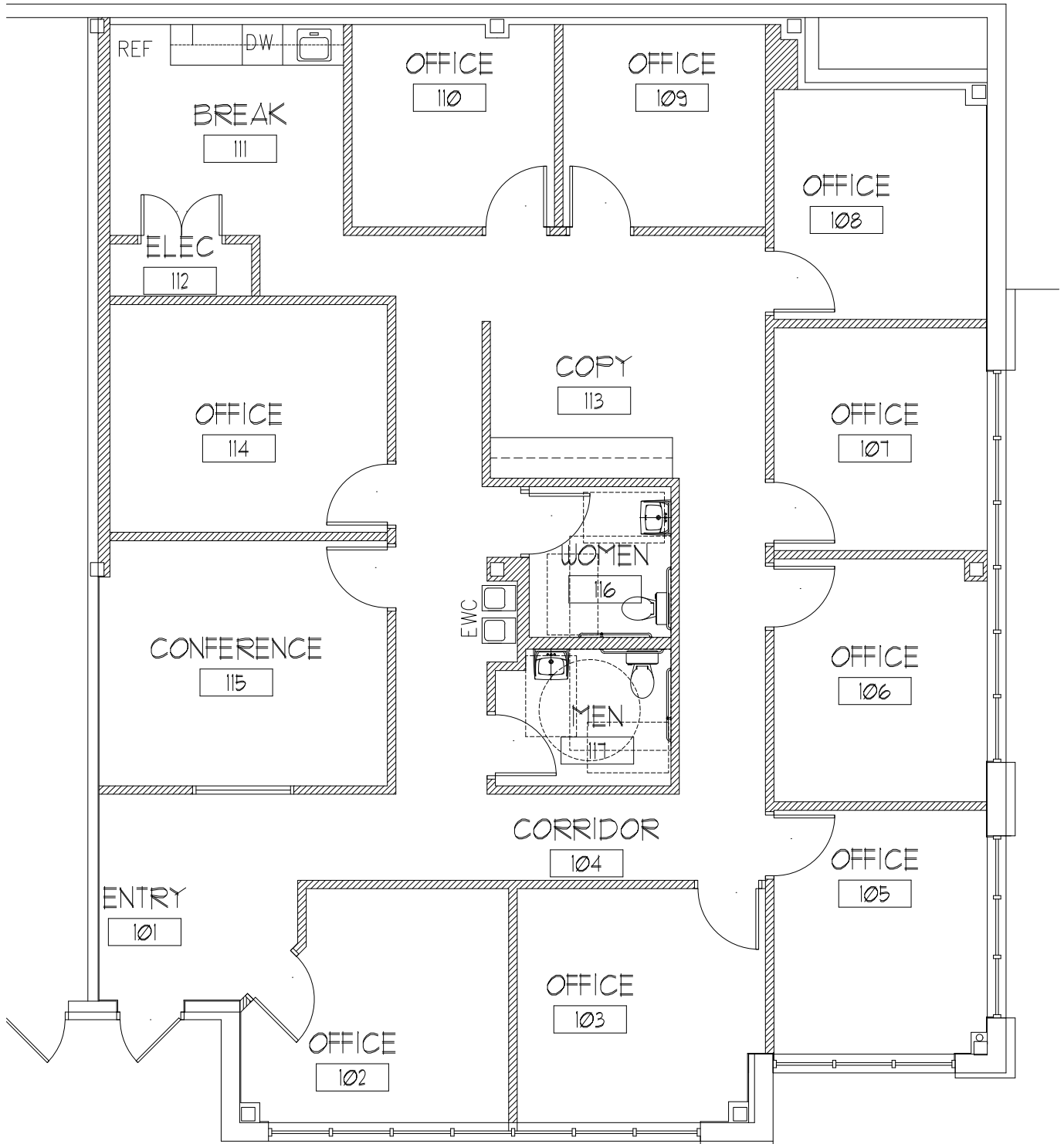
Office suite available in established office park in Greensboro. Located in the Lake Jeanette area, less than 5 miles from downtown Greensboro. Close proximity to the Greensboro Urban Loop (I-840) and multiple restaurants, hotels, and shopping.

- + **Available Space:** ±2,324 SF
- + **Rental Rate:** \$18.00/SF NNN
- + **Zoning:** Office
- + **Parking:** On-site surface parking
- + **Furniture:** Available



Floor Plan

Suite 102 – 2,324 SF



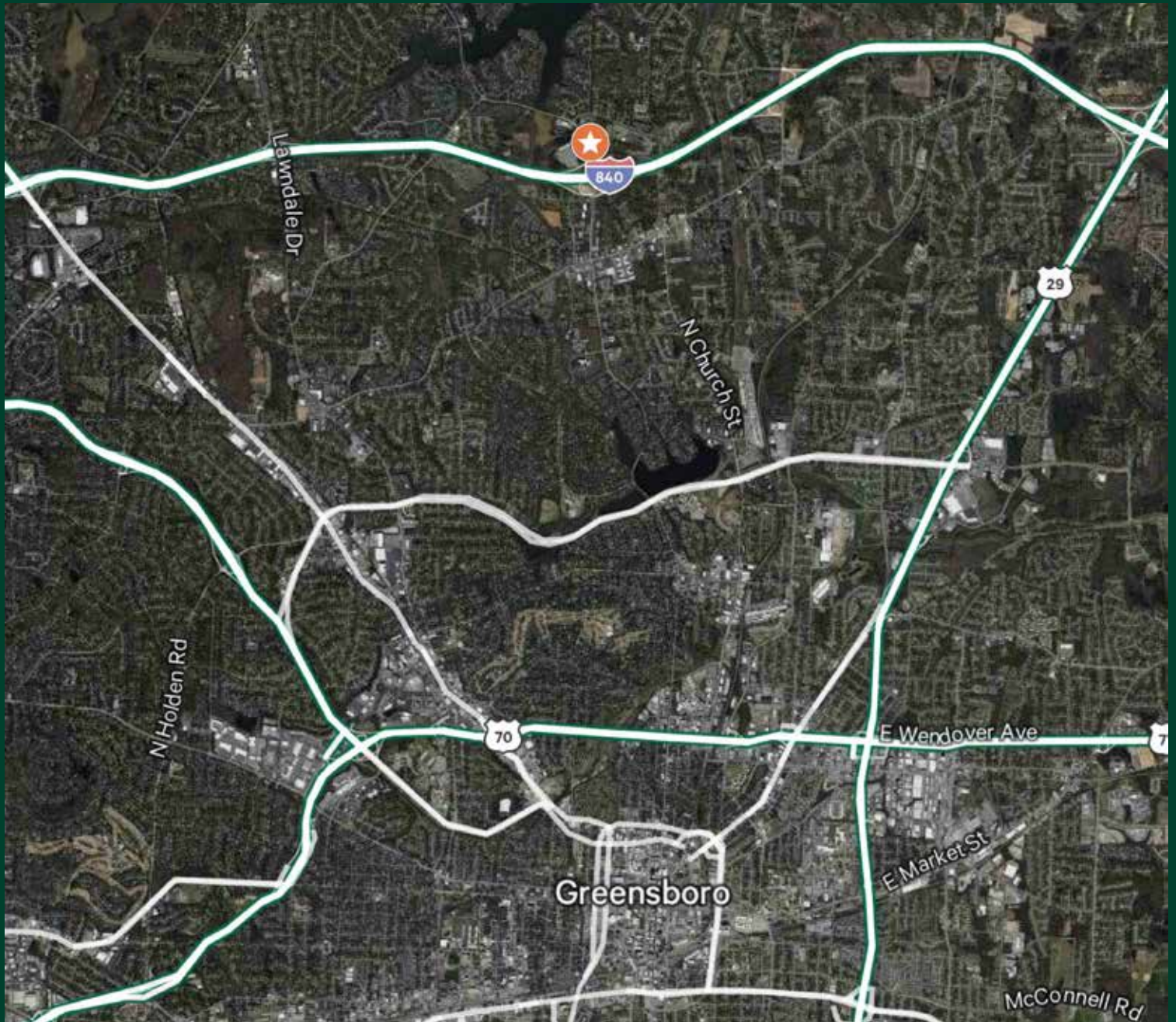
Property Photos



3810 N Elm Street
Suite 102, Greensboro, NC 27401

For Lease

Location Map



Contact Us

Sam Elliott

Senior Associate
+1 336 478 4404
sam.elliott@cbre.com

Dodson Schenck

Executive Vice President
+1 336 478 0234
dodson.schenck@cbre.com

© 2025 CBRE, Inc. All rights reserved. This information has been obtained from sources believed reliable, but has not been verified for accuracy or completeness. You should conduct a careful, independent investigation of the property and verify all information. Any reliance on this information is solely at your own risk. CBRE and the CBRE logo are service marks of CBRE, Inc. All other marks displayed on this document are the property of their respective owners, and the use of such logos does not imply any affiliation with or endorsement of CBRE. Photos herein are the property of their respective owners. Use of these images without the express written consent of the owner is prohibited.

3810 N Elm Street
Suite 102, Greensboro, NC 27401

For Lease