

22025 - 22045 W. Lockport Street

Plainfield, IL 60544

RESIDENTIAL LAND FOR SALE | APPROVED FOR 84 UNIT SENIOR HOUSING DEVELOPMENT



john
greene
COMMERCIAL

22025 - 22045 W. Lockport Street | Plainfield, IL 60544

RESIDENTIAL LAND FOR SALE | APPROVED FOR 84 UNIT SENIOR HOUSING DEVELOPMENT

John Greene Commercial | 1311 S Route 59, Naperville, IL 60564 | 630.229.2290



OFFERING SUMMARY

Sale Price:	\$1,750,000
Lot Size:	5.93± Acres
Zoning:	R-7 (Village of Romeoville)
Traffic Count:	12,945 (Airport Rd).
County:	Will
2024 Taxes:	\$16,057

PROPERTY OVERVIEW

5.93± AC site fully approved and ready for permits for an 84-unit senior housing project. This single-story wood frame construction will cater to independent, assisted, and memory care living. All utilities are accessible, and substantial water retention from the nearby residential subdivision is already established.

The property is zoned R-7 (Village of Romeoville) and is conveniently located less than half a mile east of the proposed future I-55 interchange at Airport Road.

For further information about the proposed interchange please visit:
<https://idot.illinois.gov/programs-and-projects/featured-projects/i-55--at-airport-lockport-road--improvement-study.html>

Chris Condon
chriscondon@johngreenecommercial.com
815.693.3005

The information contained herein is from sources John Greene Real Estate deems reliable, but is not guaranteed. This offer may be withdrawn from the market or be subject to a change in price or terms without advance notice. Seller reserves the right to reject any and all offers. Duplication is expressly prohibited. 2019



22025 - 22045 W. Lockport Street | Plainfield, IL 60544

RESIDENTIAL LAND FOR SALE | APPROVED FOR 84 UNIT SENIOR HOUSING DEVELOPMENT

john greene Commercial | 1311 S Route 59, Naperville, IL 60564 | 630.229.2290



Chris Condon
chriscondon@johngreenecommercial.com
815.693.3005

The information contained herein is from sources john greene Real Estate deems reliable, but is not guaranteed. This offer may be withdrawn from the market or be subject to a change in price or terms without advance notice. Seller reserves the right to reject any and all offers. Duplication is expressly prohibited. 2019

**john
greene**
COMMERCIAL

22025 - 22045 W. Lockport Street | Plainfield, IL 60544

RENDERING OF PROPOSED BUILDING

john greene Commercial | 1311 S Route 59, Naperville, IL 60564 | 630.229.2290



SEIDELL
ARCHITECTS

J. SCOTT SMITH

Note: Rendering of a proposed building.

Chris Condon
chriscondon@johngreenecommercial.com
815.693.3005

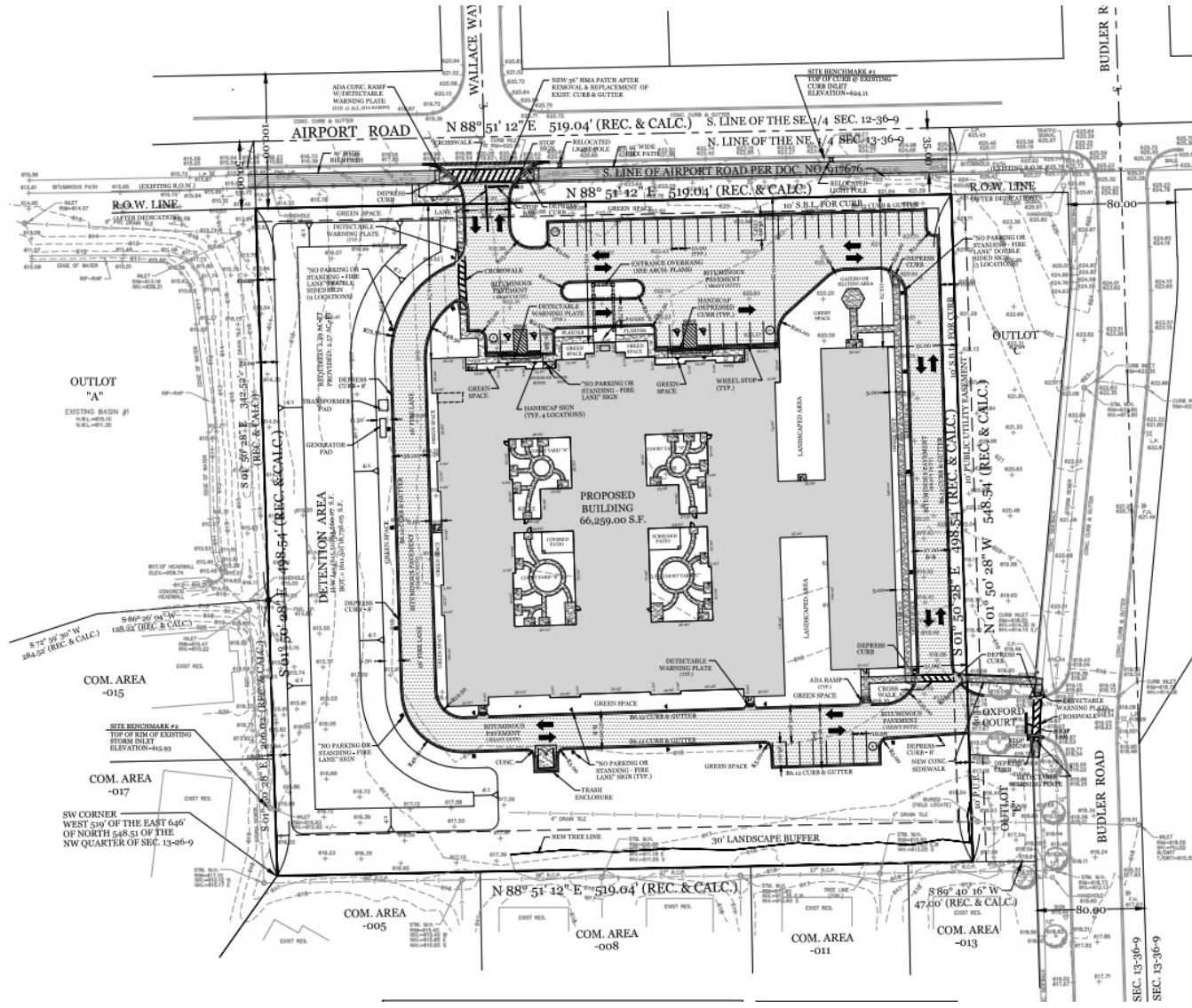
The information contained herein is from sources john greene Real Estate deems reliable, but is not guaranteed. This offer may be withdrawn from the market or be subject to a change in price or terms without advance notice. Seller reserves the right to reject any and all offers. Duplication is expressly prohibited. 2019

john
greene
COMMERCIAL

22025 - 22045 W. Lockport Street | Plainfield, IL 60544

SITE PLAN

john greene Commercial | 1311 S Route 59, Naperville, IL 60564 | 630.229.2290



Chris Condon
chriscondon@johngreenecommercial.com
815.693.3005

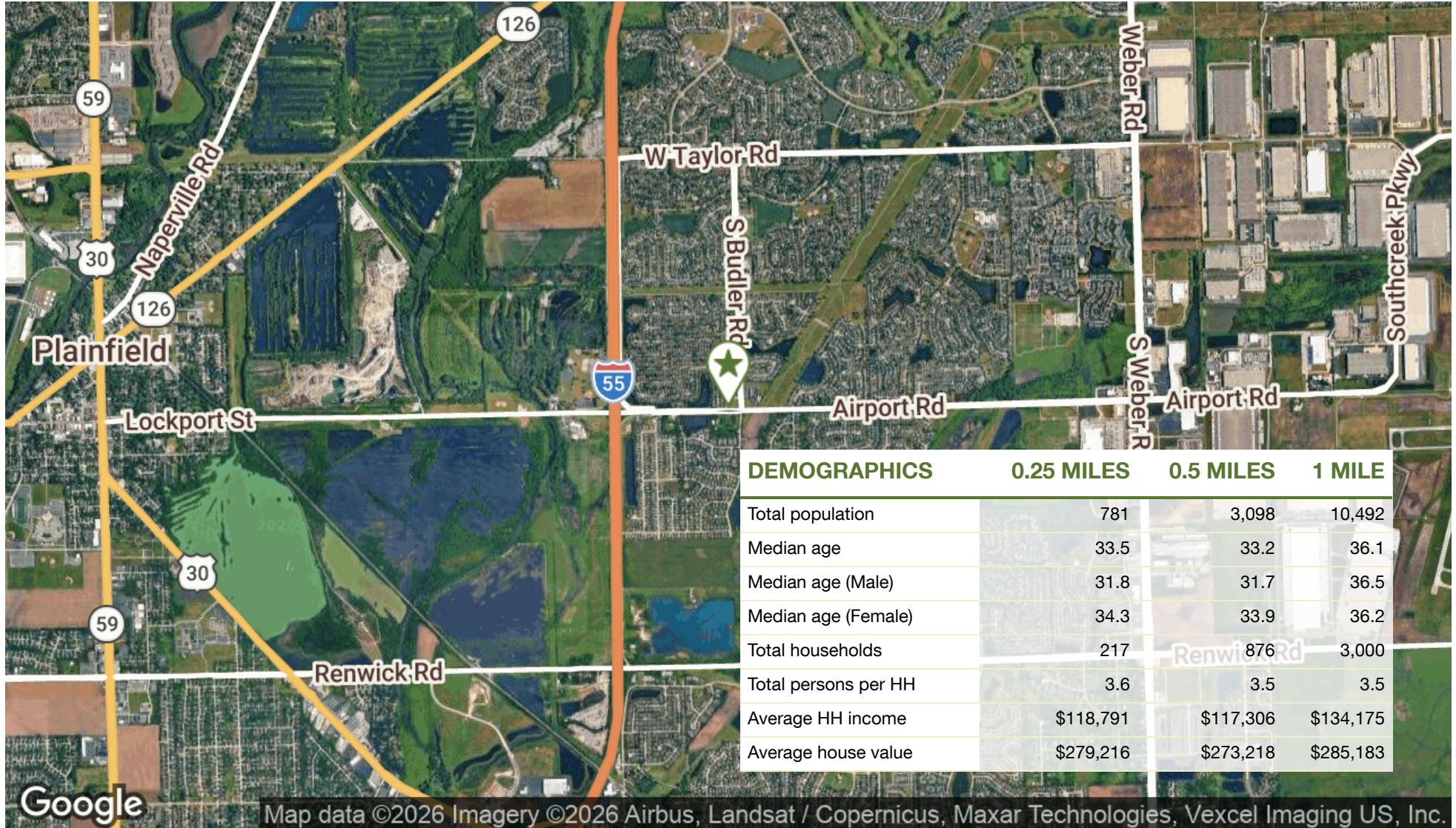
The information contained herein is from sources john greene Real Estate deems reliable, but is not guaranteed. This offer may be withdrawn from the market or be subject to a change in price or terms without advance notice. Seller reserves the right to reject any and all offers. Duplication is expressly prohibited. 2019



22025 - 22045 W. Lockport Street | Plainfield, IL 60544

RESIDENTIAL LAND FOR SALE | APPROVED FOR 84 UNIT SENIOR HOUSING DEVELOPMENT

John Greene Commercial | 1311 S Route 59, Naperville, IL 60564 | 630.229.2290



Chris Condon
 chriscondon@johngreenecommercial.com
 815.693.3005

The information contained herein is from sources John Greene Real Estate deems reliable, but is not guaranteed. This offer may be withdrawn from the market or be subject to a change in price or terms without advance notice. Seller reserves the right to reject any and all offers. Duplication is expressly prohibited. 2019

