

208

COLUMBIA ST | SEATTLE WA



NEWMARK

MARTIN SMITH INC

Tracy Turnure

Associate
425-372-9923
tracy.turnure@nrmk.com

Cavan O'Keefe

Senior Managing Director
206-395-2903
cavan.okeefe@nrmk.com

Daniel Seger

Senior Managing Director
206-487-5163
daniel.seger@nrmk.com



Availabilities

Floor 1	19,432 RSF (div. to 5,000 RSF)	Retail	Available Now
Mezzanine	6,844 RSF	Retail	Available Now
Floor 2	8,395 RSF	Office	January 1, 2026

Building Highlights

- **Central Location:** Situated in Seattle's Central Business District, the property offers convenient access to downtown amenities and services.
- **Spacious Interiors:** The building encompasses a total size of 29,451 rentable square feet (RSF), with a typical floor offering approximately 10,000 RSF.
- **High Ceilings and Large Windows:** Designed with stately high ceilings and large windows, the building provides ample natural light, enhancing the work environment.



The Neighborhood

NEARBY PLACES

1. Seattle Aquarium
2. Waterfront Park
3. The Seattle Great Wheel
4. Pier 56
5. Pier 55
6. Pier 54
7. Colman Dock
8. Pioneer Square Habitat Beach

COFFEE SHOPS

1. Caffe Ladro - Downtown at 2+U
2. The Shop by Porter
3. Café Hitchcock
4. Starbucks
5. Futurebean
6. Pegasus Coffee Bar
7. Good Coffee
8. Starbucks

FOOD & DRINK

- | | |
|---------------------------------------|-----------------------------------|
| 1. The Crab Pot Seattle | 18. Metropolitan Grill |
| 2. The Fisherman's Restaurant Seattle | 19. Red Bowls Restaurant |
| 3. Elliott's Oyster House | 20. Own N' Thistle |
| 4. Post Alley Pizza | 21. Señor Carbón Peruvian Cuisine |
| 5. Mint Progressive Indian | 22. Fusion Bistro Indian Cuisine |
| 6. Okinawa Teriyaki | 23. Rojo's Mexican Food |
| 7. Skalka | 24. Hole in the Wall BBQ |
| 8. All Water Seafood & Oyster Bar | 25. The Collins Pub |
| 9. The Frankfurter | 26. 84 Yesler |
| 10. Premier Meat Pies | 27. Tapas Angel |
| 11. Great State Burger | 28. Tat's Deli |
| 12. Ivar's Acres of Clams | 29. Nirmal's |
| 13. Ivar's Pier 54 Fish Bar | 30. Drunken Pizza & Pocha |
| 14. Oyster Cellar | 31. Falafel Fresh |
| 15. Ferry Noodle House | 32. Evergreens |
| 16. Top Pot Doughnuts | 33. Damn the Weather |
| 17. Homegrown | 34. Numero Uno Pizza |

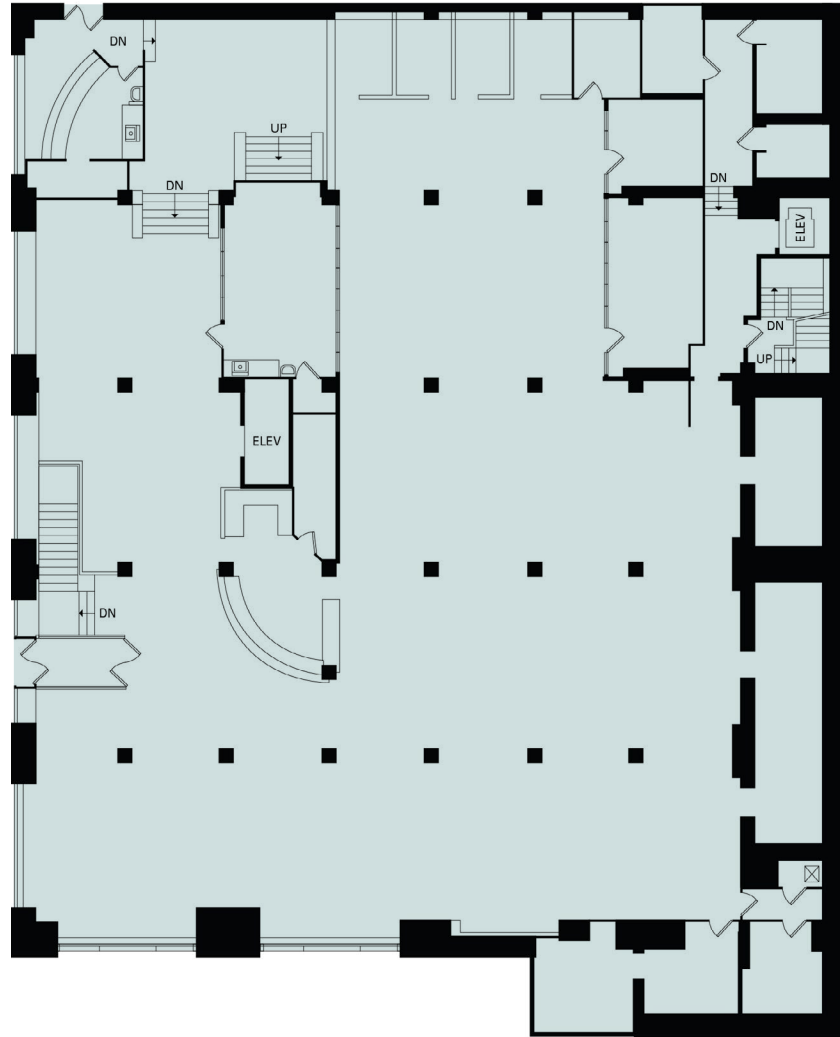


Nearby Transportation



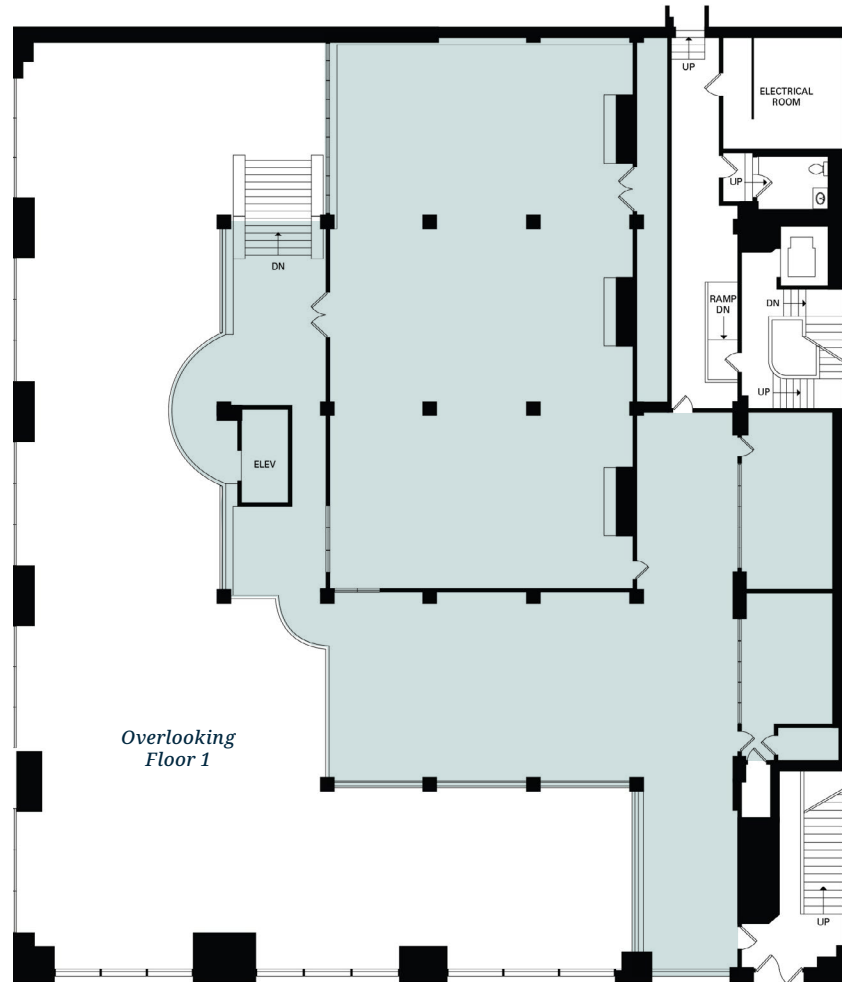
Floor 1 – 19,432 RSF

Retail | Available Now | Divisible to 5,000 RSF



Mezzanine – 6,844 RSF

Retail | Available Now



Floor 2 – 8,395 RSF

Available January 1, 2026



208

COLUMBIA ST | SEATTLE WA

Tracy Turnure

Associate
425-372-9923
tracy.turnure@nrmk.com

Cavan O'Keefe

Senior Managing Director
206-395-2903
cavan.okeefe@nrmk.com

Daniel Seger

Senior Managing Director
206-487-5163
daniel.seger@nrmk.com

NEWMARK

MARTIN SMITH INC

The distributor of this communication is performing acts for which a real estate license is required. The information contained herein has been obtained from sources deemed reliable but has not been verified and no guarantee, warranty or representation, either express or implied, is made with respect to such information. Terms of sale or lease and availability are subject to change or withdrawal without notice.
www.nrmk.com 8891030910