



PRIME RETAIL SPACE(S) ON MELROSE AVE FOR LEASE

8117-8125 MELROSE AVE, LOS ANGELES, CA 90046

PROPERTY HIGHLIGHTS



SPACE SIZE

8125: ±2,407 SF

8119: ±1,836 SF

8117: ±979 SF

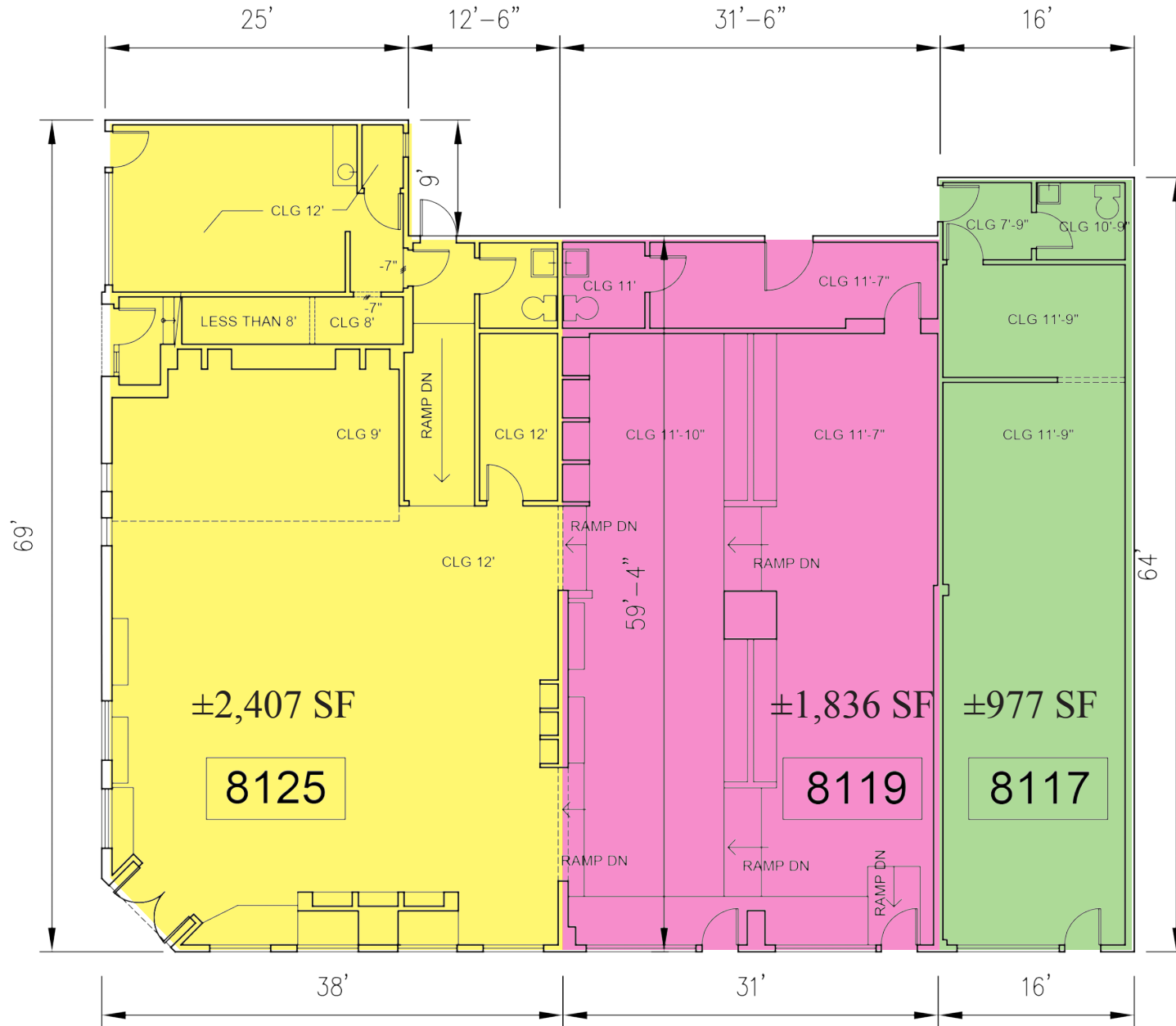
RENT

INQUIRE WITH BROKER

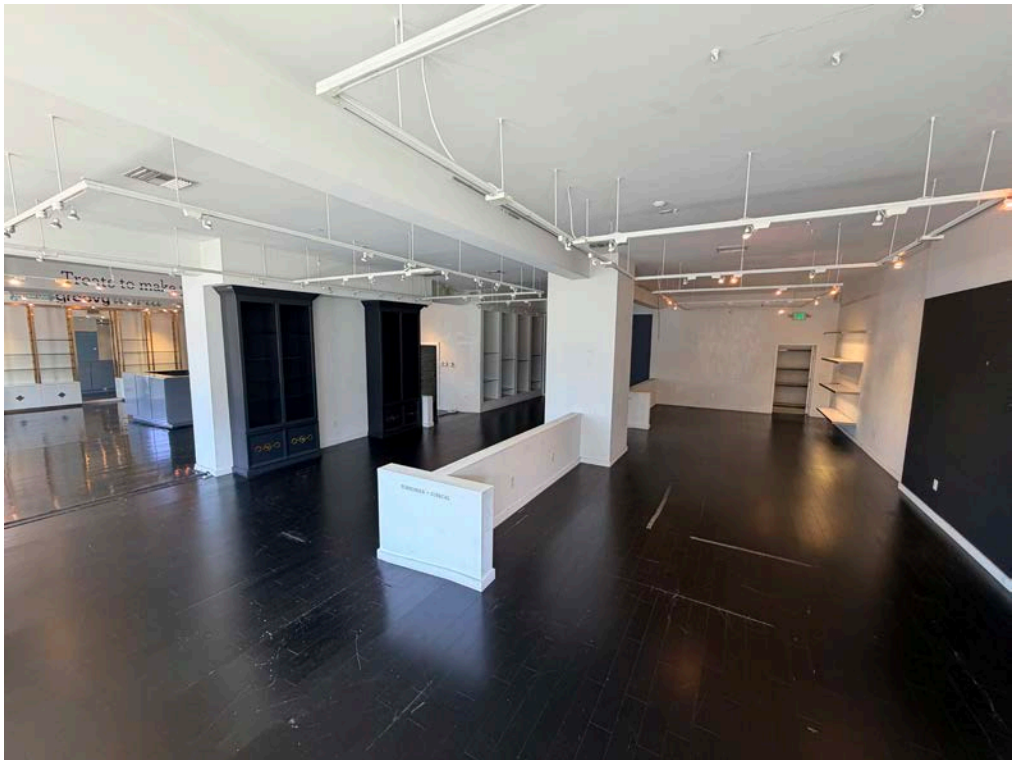
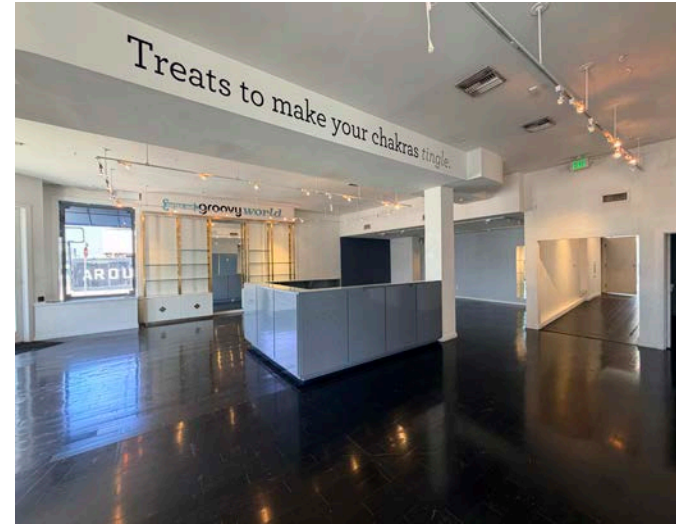
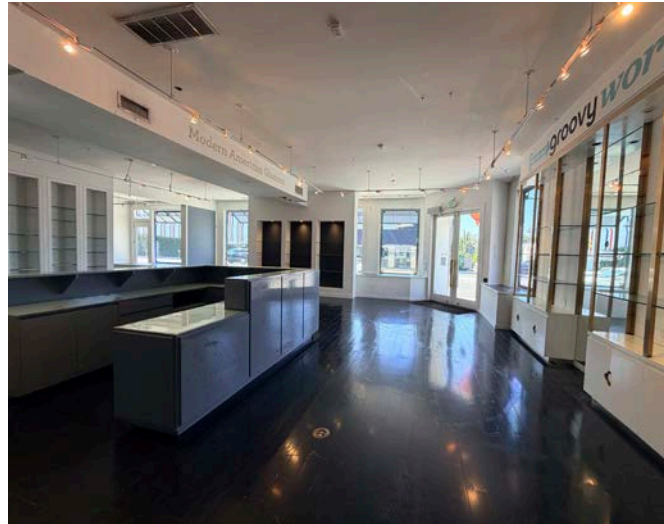
***Spaces can be combined for a ±5,222 SQFT
single tenant building or leased separately**

- Rare corner retail property for lease on Melrose west of Crescent Heights
- First time available in over 25 years
- Unique character building with Spanish roof, high ceilings and above average parking for the block
- ±5,222 SQFT single tenant or lease spaces individually
- Across from the revamped Fred Segal and with close proximity to some of the best high end fashion and home furnishing retailers in Los Angeles

SITE PLAN



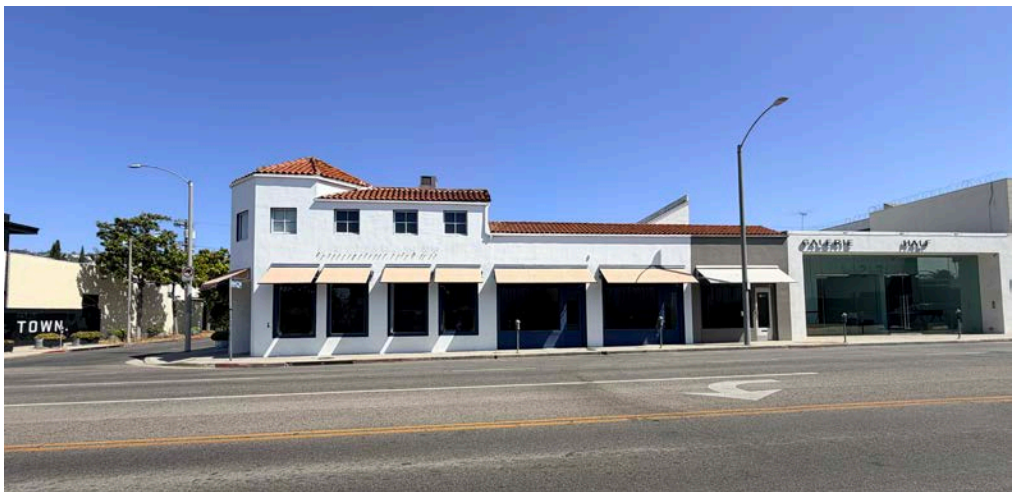
INTERIOR PHOTOS



ADDITIONAL PHOTOS



Directly Across The Street



STREET MAP



AERIAL

BEVERLY HILLS

WEST HOLLYWOOD

La Cienega Blvd

**SUBJECT
PROPERTY**

Crescent Heights Blvd

Melrose Ave

BEVERLY GROVE



These materials are based on information and content provided by others, which we believe are accurate. No guarantee, warranty or representation is made by Commercial Asset Group, Inc. or its personnel. All interested parties must independently verify accuracy and completeness. As well, any projections, assumptions, opinion, or estimates are used for example only and do not represent the current or future performance of the identified property. Your tax, financial, legal and toxic substance advisors should conduct a careful investigation of the property and its suitability for your needs, including land use limitations. The property is subject to prior lease, sale, change in price, or withdrawal from the market without notice.



**COMMERCIAL
ASSET GROUP**

Commercial Asset Group

190 N. Canon Drive, STE 300
Beverly Hills, CA 90210
P: 310.275.8222 F: 310.275.8223
cagre.com Lic. 01876070

David Ickovics

Principal
310.272.7380
dji@cagre.com
Lic. 01315424

David Aschkenasy

Executive Vice President
310.272.7381
david@cagre.com
Lic. 01714442

Sheela Shouhed

Director
310.272.7383
sheela@cagre.com
Lic. 02043384