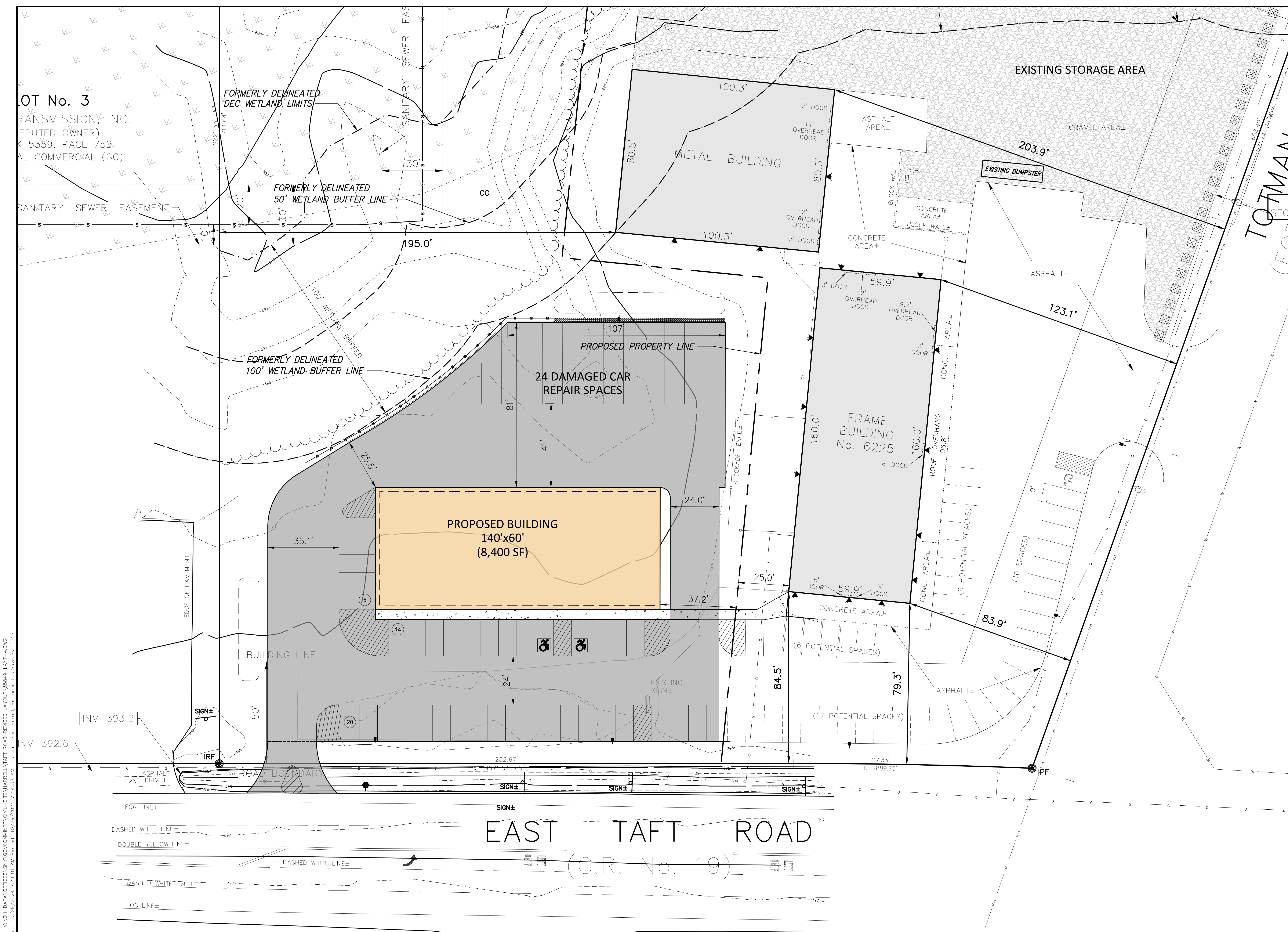
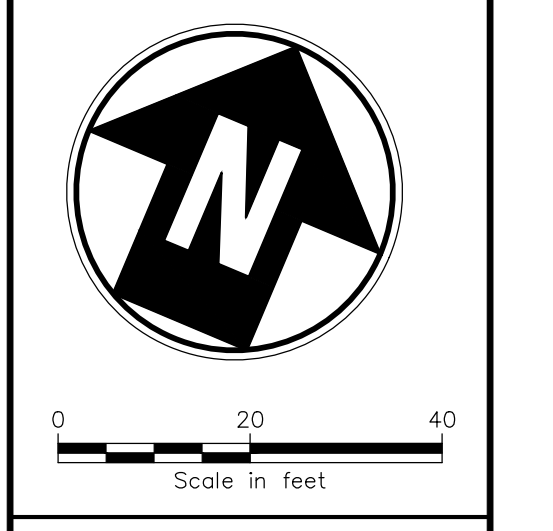


File: V:\OH_DATA\OFFICES\SNY\GOV\ADMIN\CIVIL-SHE\HARRELL\TAFT ROAD REVISED LAYOUT\35849_LAYOUT-4.DWG
 Saved: 10/29/2024 7:41:01 AM Plotted: 10/29/2024 7:54:38 AM Current User: Harrell, Benjamin Last Saved By: 5757



Drawing Copyright © 2023
CHA
 One Park Place, 300 South State Street, Suite 600
 Syracuse, NY 13202
 315.471.3920 • www.chasolutions.com



PROPOSED DEVELOPMENT
 AT
6225 EAST TAFT ROAD
 CICERO, NY 13212

IT IS A VIOLATION OF LAW FOR ANY PERSON, UNLESS THEY ARE ACTING UNDER THE DIRECTION OF A LICENSED PROFESSIONAL ENGINEER, ARCHITECT, LANDSCAPE ARCHITECT OR LAND SURVEYOR TO ALTER ANY ITEM IN ANY OF AN ITEM BEARING THE STAMP OF A LICENSED PROFESSIONAL IS ALTERED, THE ALTERING ENGINEER, ARCHITECT, LANDSCAPE ARCHITECT OR LAND SURVEYOR SHALL STAMP THE DOCUMENT AND INCLUDE THE NOTATION "ALTERED BY FOLLOWING BY THEIR SIGNATURE, THE DATE OF SUCH ALTERATION, AND A SPECIFIC DESCRIPTION OF THE ALTERATION."

6225 EAST TAFT ROAD LLC
 6227 East Molloy Road
 East Syracuse, NY 13057

No.	Submittal / Revision	App'd.	By	Date

CONCEPT PLAN
 60'X140'

Designed By:	Drawn By:	Checked By:
BGH	BGH	JFT
Issue Date:	Project No:	Scale:
10/29/24	35849	AS SHOWN

Drawing No.:
CP-1