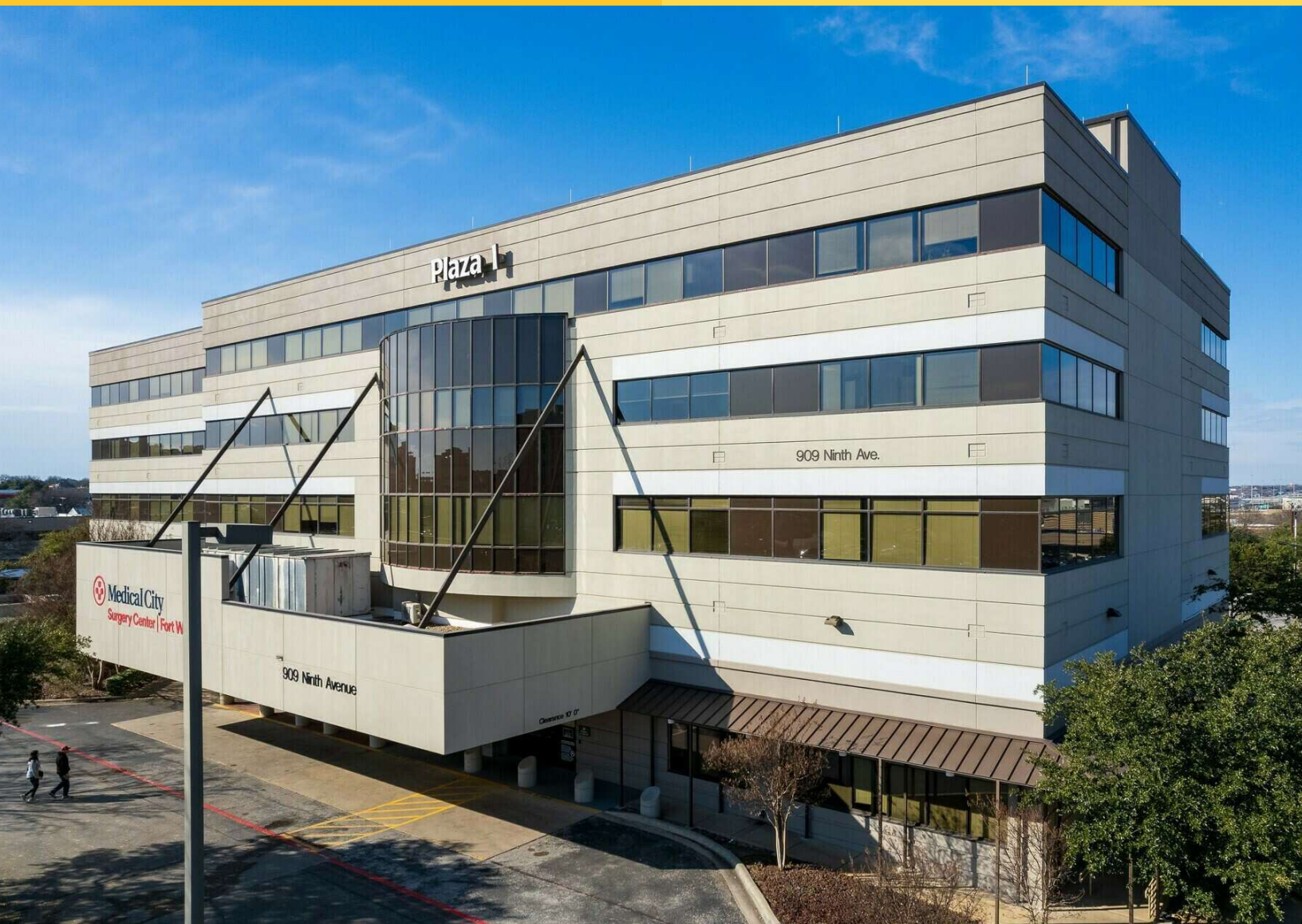


PLAZA MEDICAL CENTER FORT WORTH

909 9th Avenue
Fort Worth, TX 76104

Healthpeak® | **DOC**
LISTED
NYSE



Leasing Information:
214.461.2300

Lincoln

Banks Newton
214.461.2388
bnewton@lpc.com

Peter Shaw
214.461.2302
PShaw@lpc.com

Elizabeth Madden
214.461.2366
emadden@lpc.com

Douglas Maclay
214.461.2371
dmaclay@lpc.com

Lincoln Property Company
8140 Walnut Hill Lane Suite 700
Dallas, TX 75231

www.lpc.com

PLAZA MEDICAL CENTER FORT WORTH

Outpatient Medical For Lease

909 9th Avenue | Fort Worth, TX 76104



Property Overview

Fort Worth Plaza One is a class "A" outpatient medical building with institutional ownership consisting of over 65,000 square feet conveniently located on the campus of Medical City Fort Worth. The property has recently renovated common areas and offers customizable suite options to fit the need of a new or expanding practice. Ownership is offering generous tenant improvement packages for customizable space plans.

Property Highlights

- Excellent tenant mix
- Customizable suites
- Generous TI allowance
- Recent Hospital expansion

Availabilities

| | |
|-------------------|----------|
| Suite 210 | 3,038 SF |
| Suite 400 | 7,708 SF |
| Suite 408 | 1,190 SF |
| Suite 400 and 408 | 8,898 SF |

Banks Newton

214.461.2388
bnewton@lpc.com

Peter Shaw

214.461.2302
PShaw@lpc.com

Elizabeth Madden

214.461.2366
emadden@lpc.com

Douglas Maclay

214.461.2371
dmaclay@lpc.com

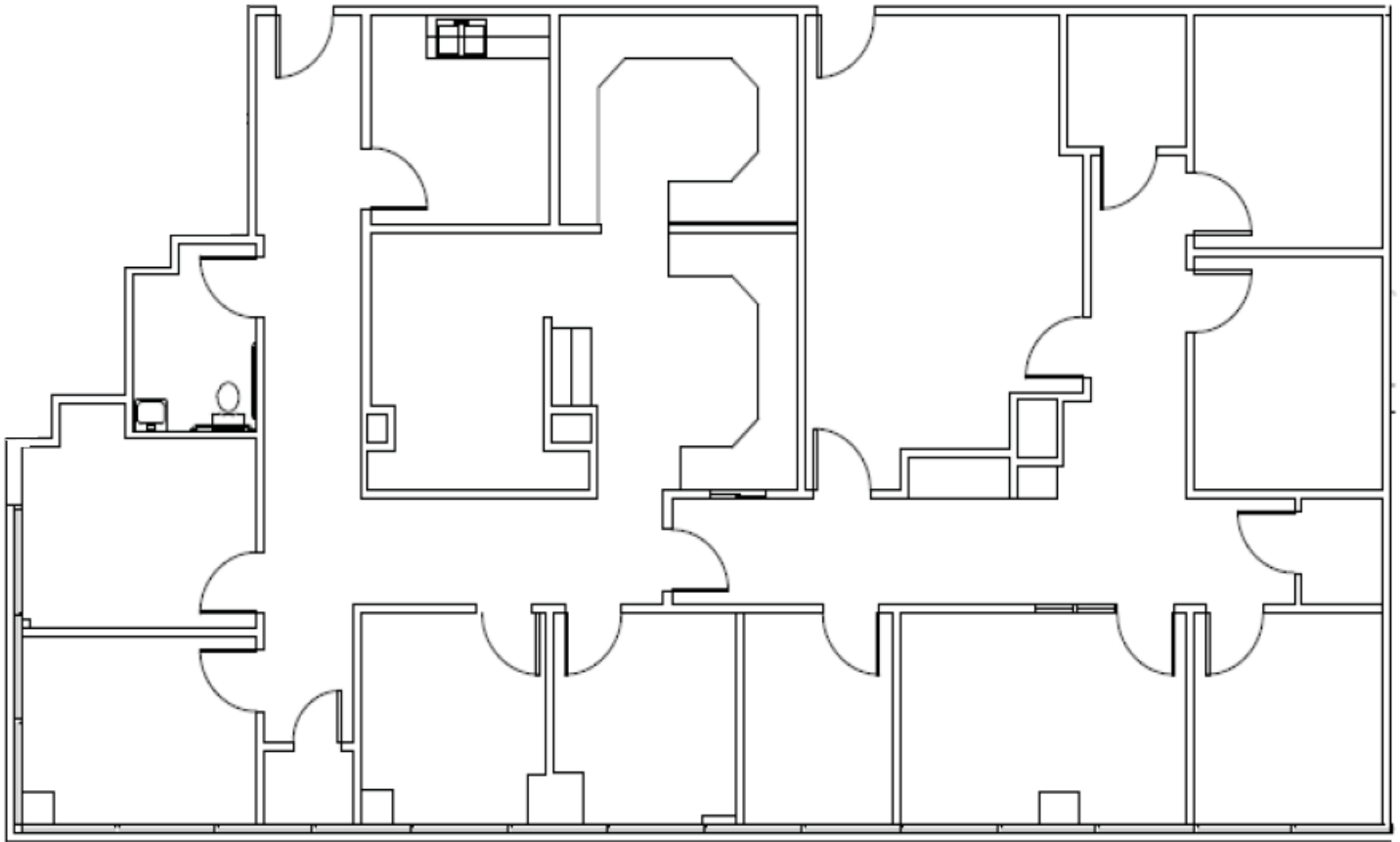
Lincoln

PLAZA MEDICAL CENTER FORT WORTH

909 9th Avenue | Fort Worth, TX 76104

Suite 210

3,038 SF



Suite

Suite 210

Size

3,038 SF

Banks Newton

214.461.2388
bnewton@lpc.com

Peter Shaw

214.461.2302
PShaw@lpc.com

Elizabeth Madden

214.461.2366
emadden@lpc.com

Douglas Maclay

214.461.2371
dmaclay@lpc.com

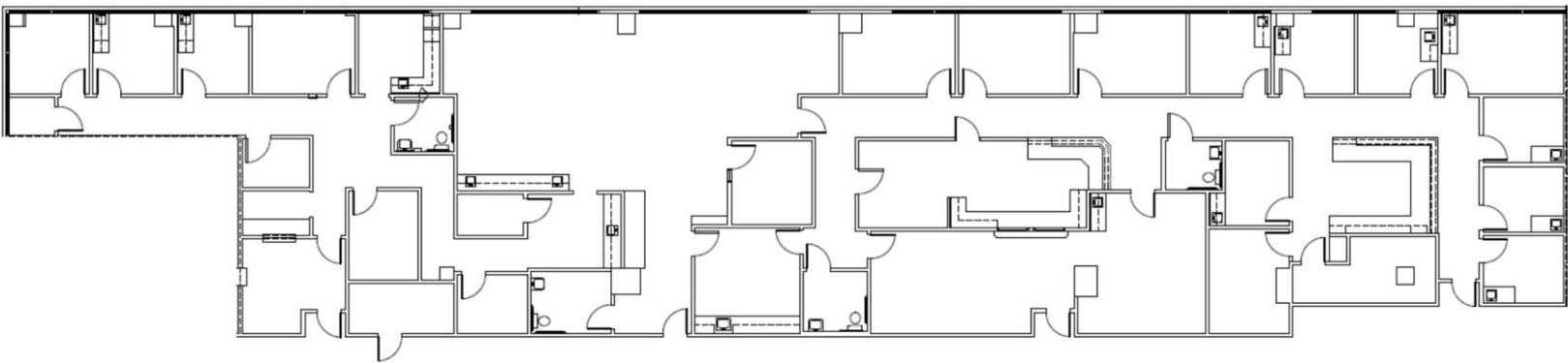
Lincoln

PLAZA MEDICAL CENTER FORT WORTH

909 9th Avenue | Fort Worth, TX 76104

Suite 400

7,708 SF



Suite

Suite 400

Size

7,708 SF

Banks Newton

214.461.2388
bnewton@lpc.com

Peter Shaw

214.461.2302
PShaw@lpc.com

Elizabeth Madden

214.461.2366
emadden@lpc.com

Douglas Maclay

214.461.2371
dmaclay@lpc.com

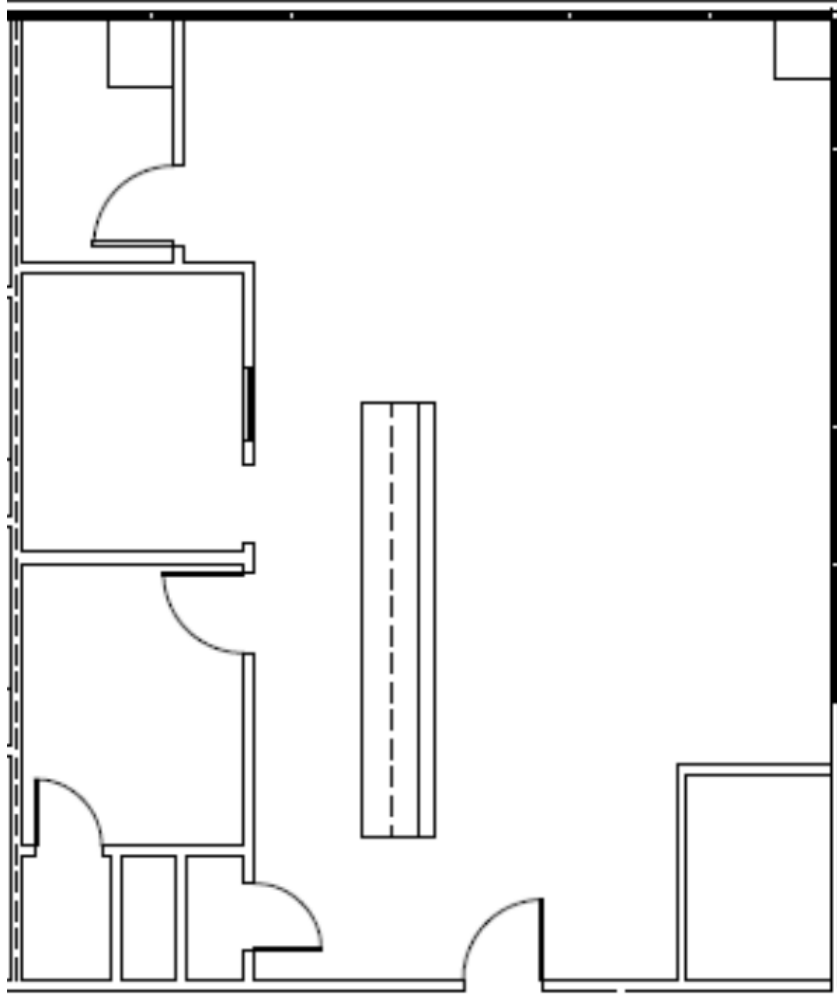
Lincoln

PLAZA MEDICAL CENTER FORT WORTH

909 9th Avenue | Fort Worth, TX 76104

Suite 408

1,190 SF



Suite

Suite 408

Size

1,190 SF

Banks Newton

214.461.2388
bnewton@lpc.com

Peter Shaw

214.461.2302
PShaw@lpc.com

Elizabeth Madden

214.461.2366
emadden@lpc.com

Douglas Maclay

214.461.2371
dmaclay@lpc.com

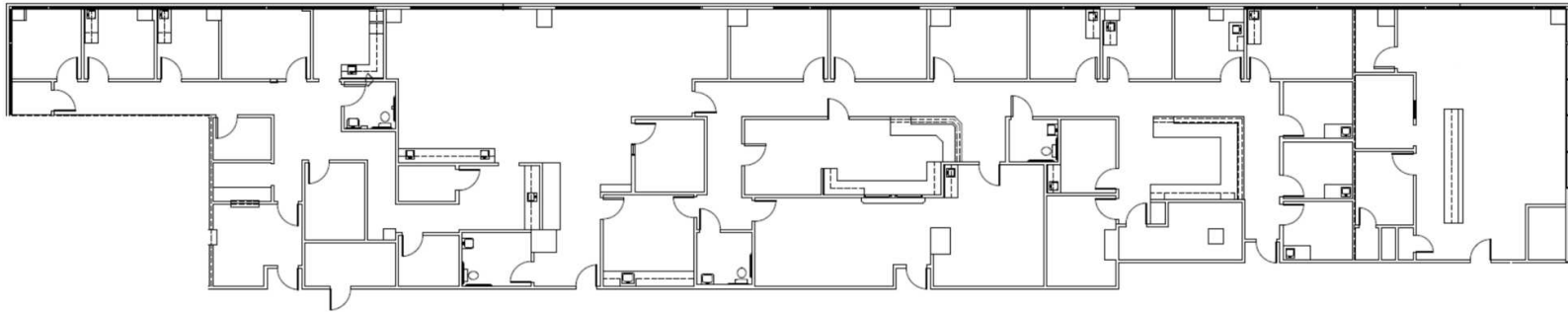
Lincoln

PLAZA MEDICAL CENTER FORT WORTH

909 9th Avenue | Fort Worth, TX 76104

400 and 408

8,898 SF



| Suite | Size |
|-------------------|----------|
| Suite 400 and 408 | 8,898 SF |

Banks Newton

214.461.2388
bnewton@lpc.com

Peter Shaw

214.461.2302
PShaw@lpc.com

Elizabeth Madden

214.461.2366
emadden@lpc.com

Douglas Maclay

214.461.2371
dmaclay@lpc.com

Lincoln

PLAZA MEDICAL CENTER FORT WORTH

Location Map

909 9th Avenue | Fort Worth, TX 76104



Banks Newton
214.461.2388
bnewton@lpc.com

Peter Shaw
214.461.2302
PShaw@lpc.com

Elizabeth Madden
214.461.2366
emadden@lpc.com

Douglas Maclay
214.461.2371
dmaclay@lpc.com

Lincoln



PLAZA MEDICAL CENTER FORT WORTH

Healthpeak® | DOC
LISTED
NYSE

909 9th Avenue
Fort Worth, TX 76104

Leasing Information:
214.461.2388

Banks Newton
214.461.2388
bnewton@lpc.com

Peter Shaw
214.461.2302
PShaw@lpc.com

Elizabeth Madden
214.461.2366
emadden@lpc.com

Douglas Maclay
214.461.2371
dmaclay@lpc.com

Lincoln

Lincoln Property Company
8140 Walnut Hill Lane Suite 700
Dallas, TX 75231

www.lpc.com