

2721 Bronxwood Ave, Bronx, NY 10469

Intersection of Boston Rd, Williamsbridge Rd, and Allerton Ave



THINGS TO KNOW

- 2,200 SF, 3,456 SF, & 5,676 SF Available
- Rent: \$45/SF +\$7/SF Additional Charges
- On-Site Attended Paid Parking Garage
- 18 Total Parking Spaces Available
- 6 Parking Spaces Reserved For Tenant

NEIGHBORS INCLUDE



CONTACT: Rick Stassa

Emerald Commercial Properties, LLC
rick@emeraldcpony.com
646-960-6800
www.emeraldcpony.com



All information furnished herein is from sources deemed reliable. No warranty or representation is made to the accuracy thereof and it is submitted subject to errors, omissions, change of price, prior sale, or withdrawal without notice.

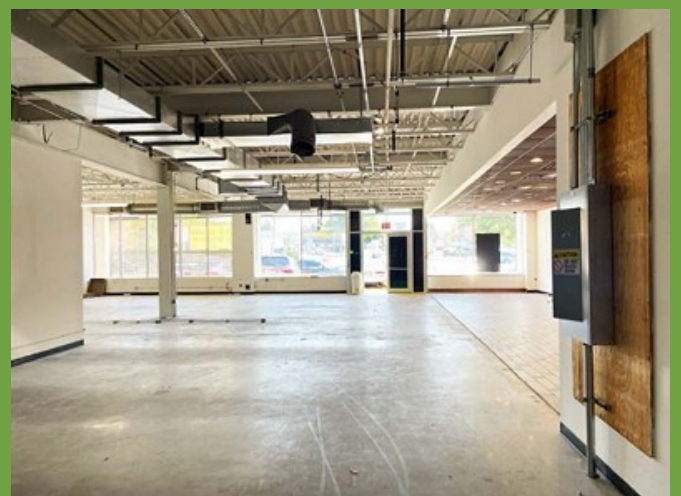
2721 Bronxwood Ave, Bronx, NY 10469

Intersection of Boston Rd, Williamsbridge Rd, and Allerton Ave

Interior Views



Entrance to Back



Back to Front



Back to Left



Back to Right

CONTACT: Rick Stassa

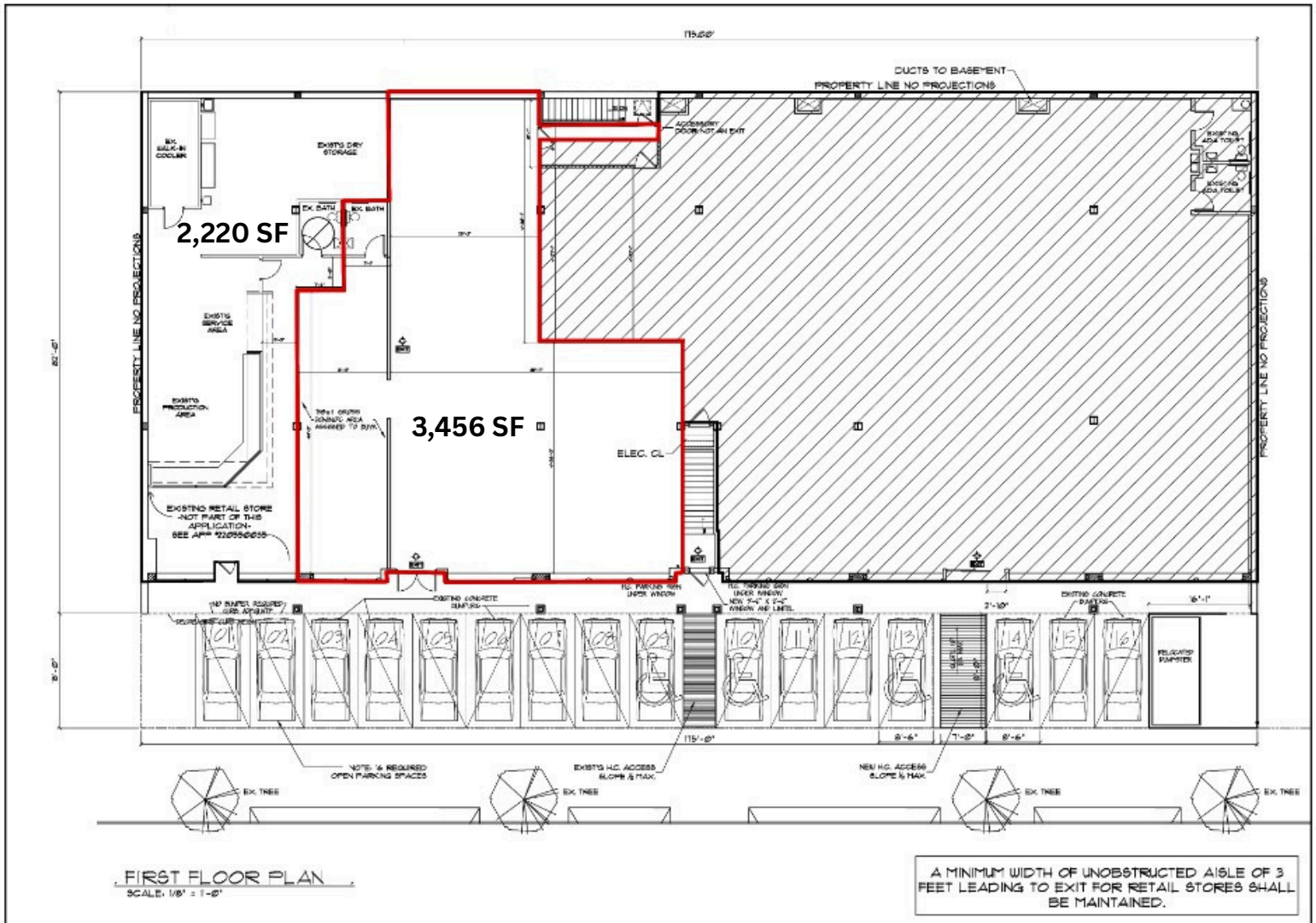
Emerald Commercial Properties, LLC
rick@emeraldcpony.com
646-960-6800
www.emeraldcpony.com



All information furnished herein is from sources deemed reliable. No warranty or representation is made to the accuracy thereof and it is submitted subject to errors, omissions, change of price, prior sale, or withdrawal without notice.

2721 Bronxwood Ave, Bronx, NY 10469

Intersection of Boston Rd, Willamsbridge Rd, and Allerton Ave



CONTACT: Rick Stassa

Emerald Commercial Properties, LLC
rick@emeraldcpony.com
646-960-6800
www.emeraldcpony.com



All information furnished herein is from sources deemed reliable. No warranty or representation is made to the accuracy thereof and it is submitted subject to errors, omissions, change of price, prior sale, or withdrawal without notice.