

AVISON
YOUNG



FOR SUBLEASE

Industrial unit available with large shipping court

3500 Ridgeway Drive, Units 4-6
Mississauga, ON

Harrison Livermore*

Principal, Executive Vice President
+1 905 283 2387
harrison.livermore@avisonyoung.com

Kurt Love*, SIOR

Vice President
+1 416 997 9460
kurt.love@avisonyoung.com

Chris Daly*

Associate Vice President
+1 905 283 2590
chris.daly@avisonyoung.com

*Sales Representative

FOR SUBLEASE

3500

Ridgeway Drive
Units 4-6

Property details

TOTAL AVAILABLE AREA

27,417 sf

OFFICE / SHOWROOM AREA

5,732 sf

CLEAR HEIGHT

22' 6"

SHIPPING

6 truck level

ZONING

E2-80, E2-81

POSSESSION

April 1, 2026

PARKING

2.06 per 1,000 sf

ASKING NET RENT

Speak with listing team

ADDITIONAL RENT

\$4.91 psf (2026)

Features



Office space built out with meeting rooms, kitchenette, washrooms, private offices and open work area



Adjacent to Highway 403, which is easily accessible by both car and public transit



Large shipping court with high ratio of dock level doors relative to unit size



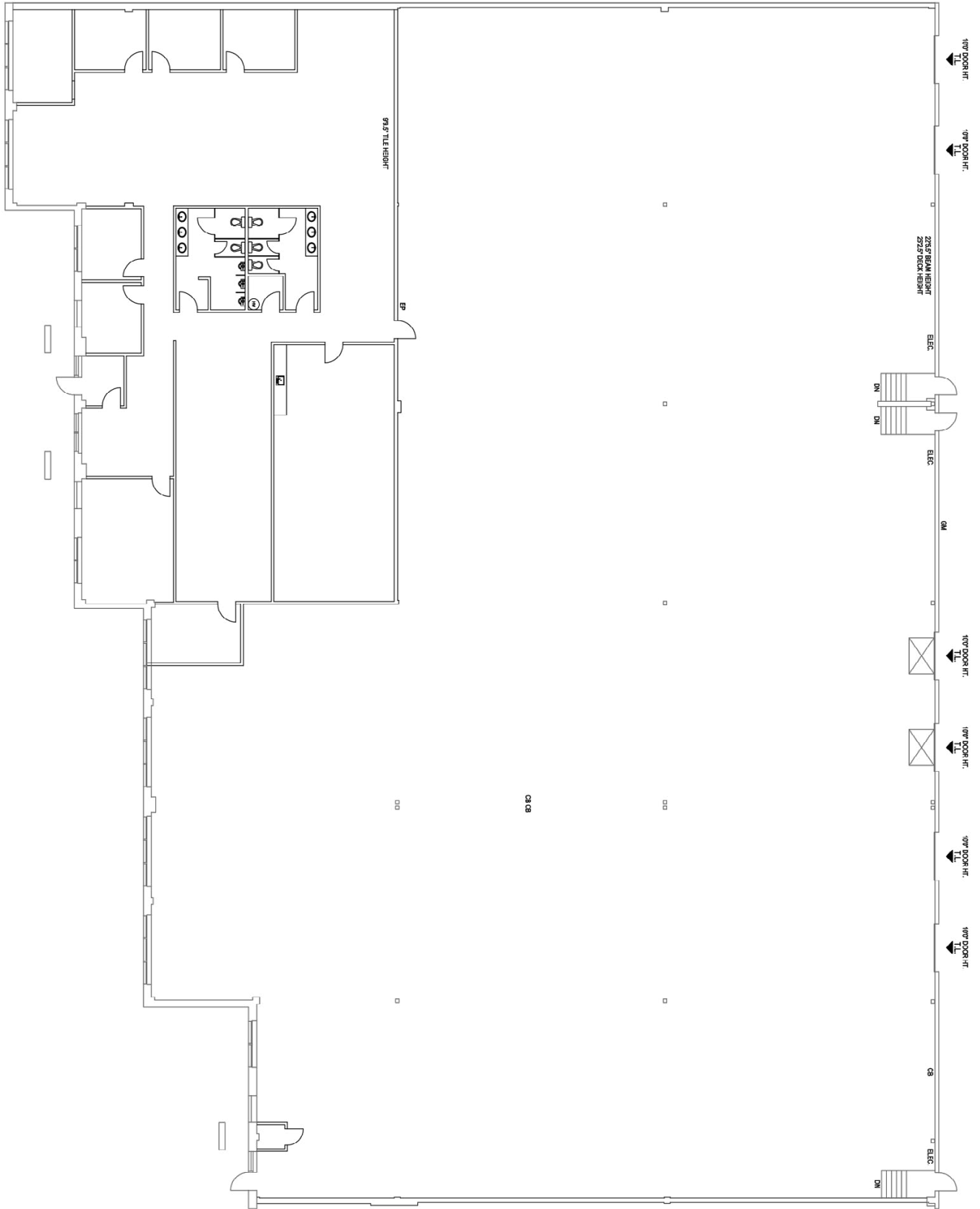
Remaining Lease Term

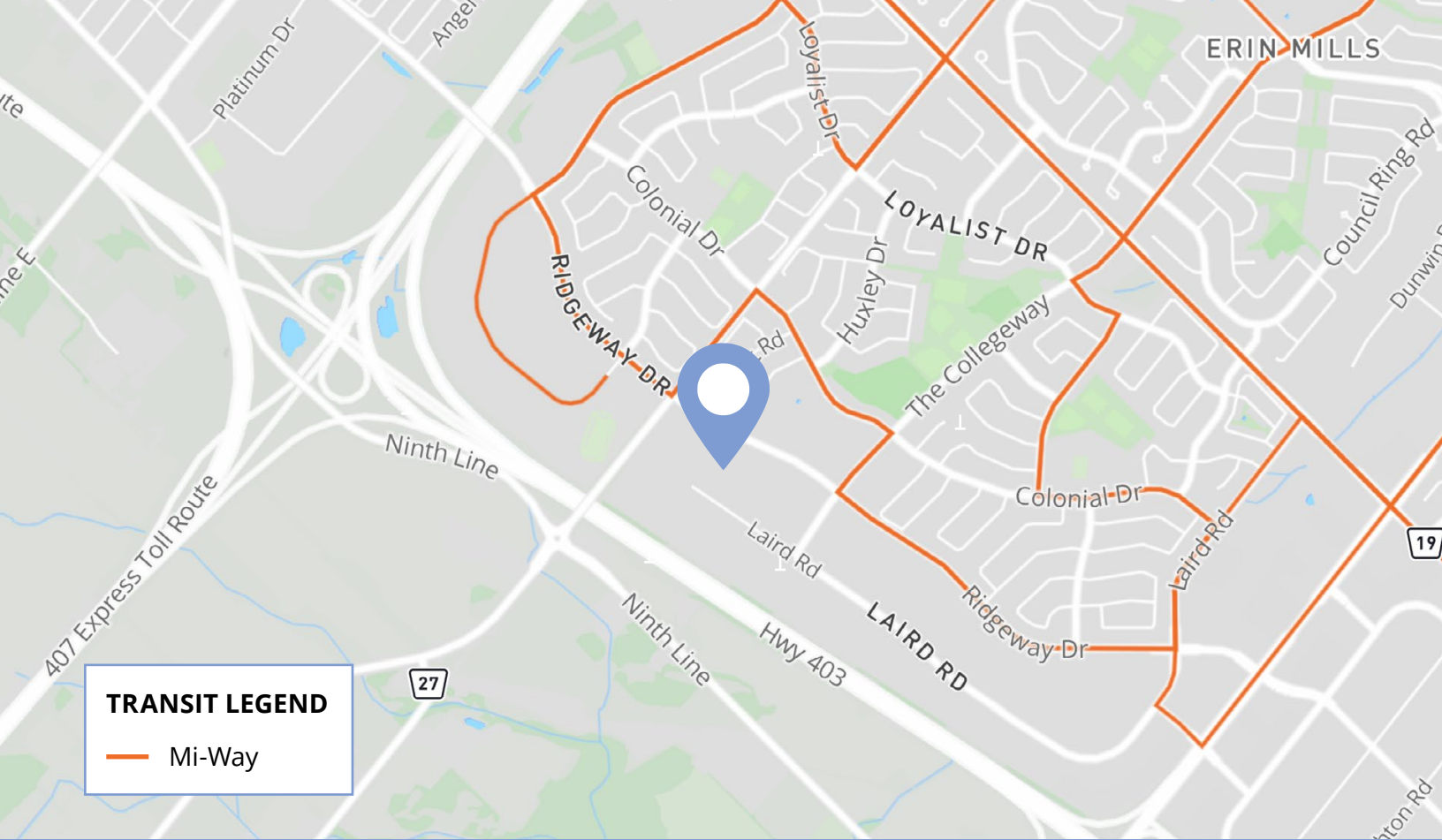
14 Months as of April 1, 2026
Sublease expires May 30th, 2027
Longer lease term available

3500 Ridgeway Drive

Units 4-6

FLOOR PLAN





TRANSIT LEGEND

— Mi-Way

Amenities within 5KM



242

Restaurants



596

Retail



37

Gas Stations



26

Banks



21

Fitness Centres

FOR SUBLEASE

3500 Ridgeway Drive, Units 4-6
Mississauga, ON

Harrison Livermore*

Principal, Executive Vice President
+1 905 283 2387
harrison.livermore@avisonyoung.com

Kurt Love*, SIOR

Vice President
+1 416 997 9460
kurt.love@avisonyoung.com

Chris Daly*

Associate Vice President
+1 905 283 2590
chris.daly@avisonyoung.com

*Sales Representative

Avison Young Commercial Real Estate Services, LP, Brokerage

77 City Centre Drive, Suite 301, Mississauga, Ontario L5B 1M5

Office 905 712 2100 Fax 905 712 2937 avisonyoung.ca

© 2026. Avison Young Commercial Real Estate Services, LP, Brokerage. Information contained herein was obtained from sources deemed reliable and, while thought to be correct, have not been verified. Avison Young does not guarantee the accuracy or completeness of the information presented, nor assumes any responsibility or liability for any errors or omissions therein.
© Mapbox, © OpenStreetMap

