



900 Washington Street, Suite 850 • Vancouver, WA 98660  
(360) 750-5595 • fax (360) 750-5594 • www.fg-cre.com

# For Sublease



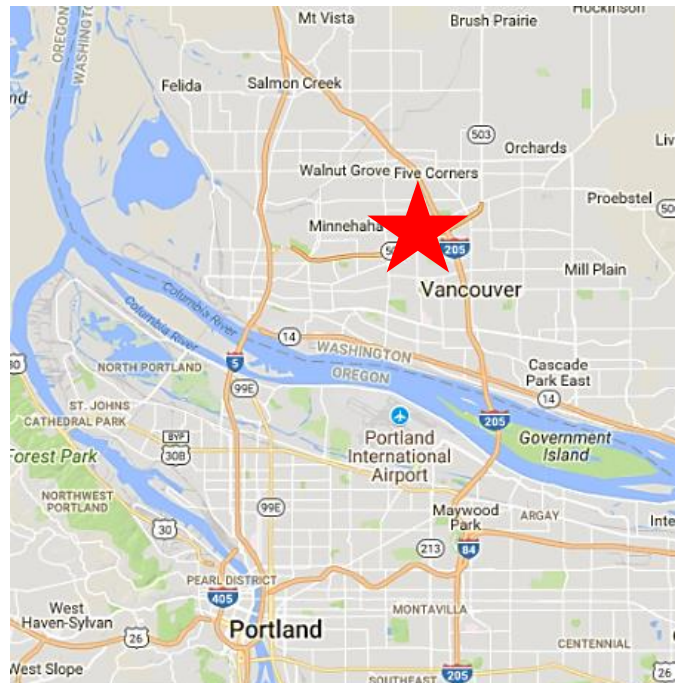
## Vancouver Mall Professional Campus

9300 NE Vancouver Mall Drive  
Vancouver, WA 98662

**Vancouver Mall Professional Campus** is a Class A office complex, ideally located with easy access and proximity to I-205 and SR-500. Minutes to Padden Expressway, I-5, Hwy 14 and Portland International Airport.

**AVAILABLE:** 2,157 SF – sublease available through April 2020.

**RENTAL RATE:** \$20.00/SF/Year, full service.



**FOR MORE INFO:**

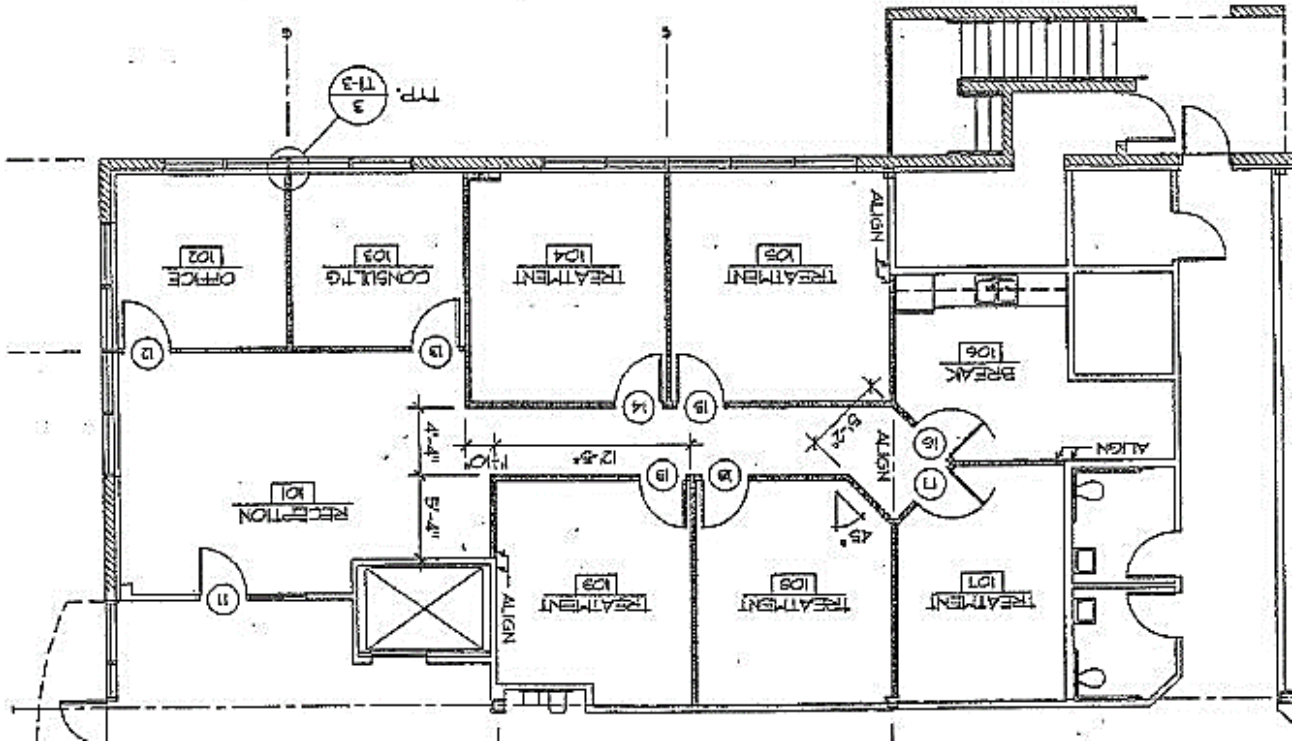
360-750-5595  
www.fg-cre.com



Adam Roselli, CCIM | 360.597.0568 | aroselli@fg-cre.com  
Byron Roselli | 360.597.0567 | broseli@fg-cre.com

# For Sublease

9300 NE Vancouver Mall Drive | Vancouver, WA 98662



## 2018 Demographics

	1-Mile	3-Mile	5-Mile
Est. Population	13,214	122,852	265,969
Avg. Household Income	\$68,884	\$70,965	\$77,183
Daytime Employment	10,063	54,480	101,350



This statement with the information it contains is given with the understanding that all the negotiations relating to the purchase, rental or leasing of the property described above shall be conducted through this office. The above information, while not guaranteed, has been secured from sources we believe to be reliable.

[www.fg-cre.com](http://www.fg-cre.com)