

# Eisenhauer Business Park – Building 1

San Antonio, TX

## Key Facts

Property type Industrial space

Building size 83,511 SF

Space available 20,590 SF



## Contact Us

Learn more about this property or schedule a tour by reaching out to our local investment and leasing officer.

**Barney Sinclair**

+1 (214) 476-6554

[barney.sinclair@eqtpartners.com](mailto:barney.sinclair@eqtpartners.com)

**Caleb Parikh**

+1 (404) 824-3904

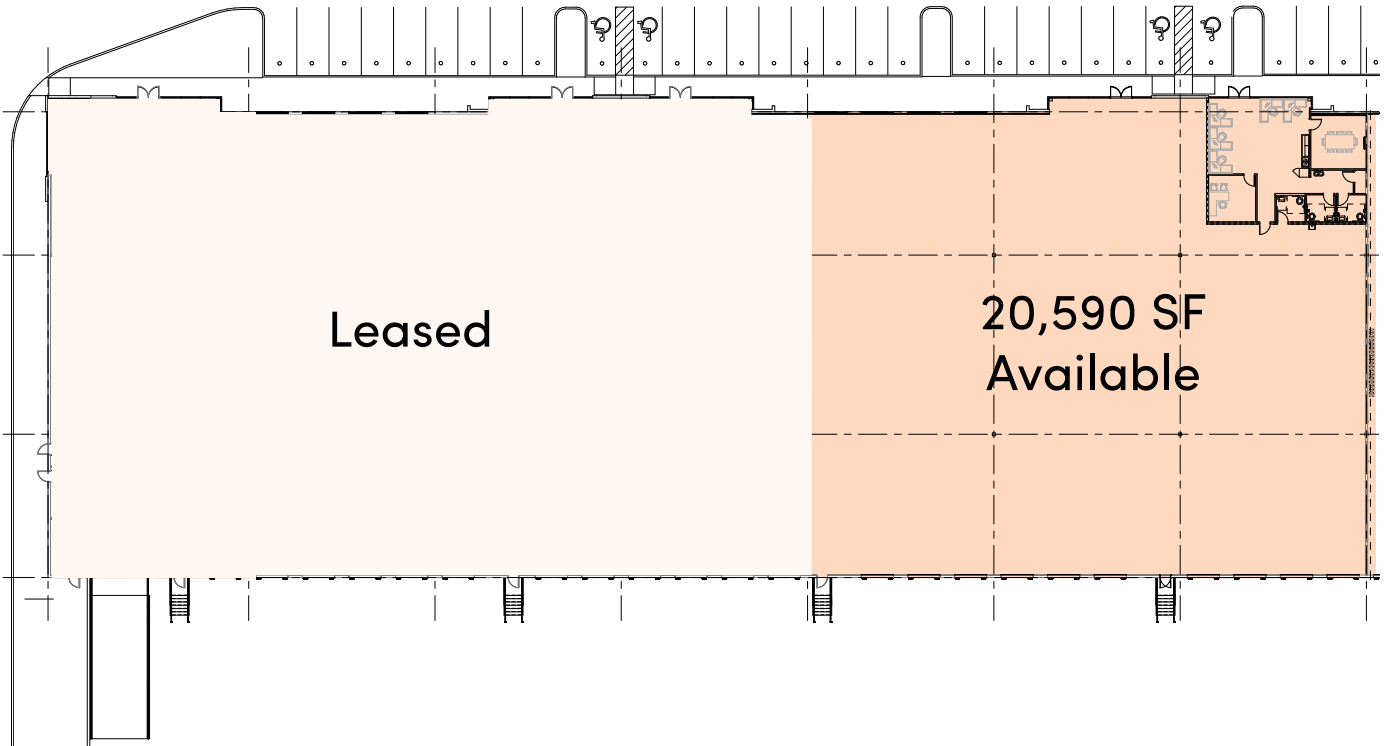
[caleb.parikh@eqtpartners.com](mailto:caleb.parikh@eqtpartners.com)

# Eisenhower Business Park - Building 1

San Antonio, TX

## BUILDING SPECIFICATIONS

Building Size: 83,511 SF	Building Depth: 130'
Building Space Available: 20,590 SF	Column Spacing: 43'4" D x 52' L
Office Space: 1,500 SF	Shared Truck Court Depth: 200'
Clear Height: 28'	Car Parks: 1.39/1,000
Loading Configuration: Rear Load	Fire Protection: ESFR Sprinkler System
Dock Doors: 10 (9'x10')	



### Contact Us

Learn more about this property or schedule a tour by reaching out to our local investment and leasing officer.

**Barney Sinclair**

+1 (214) 476-6554

barney.sinclair@eqtpartners.com

**Caleb Parikh**

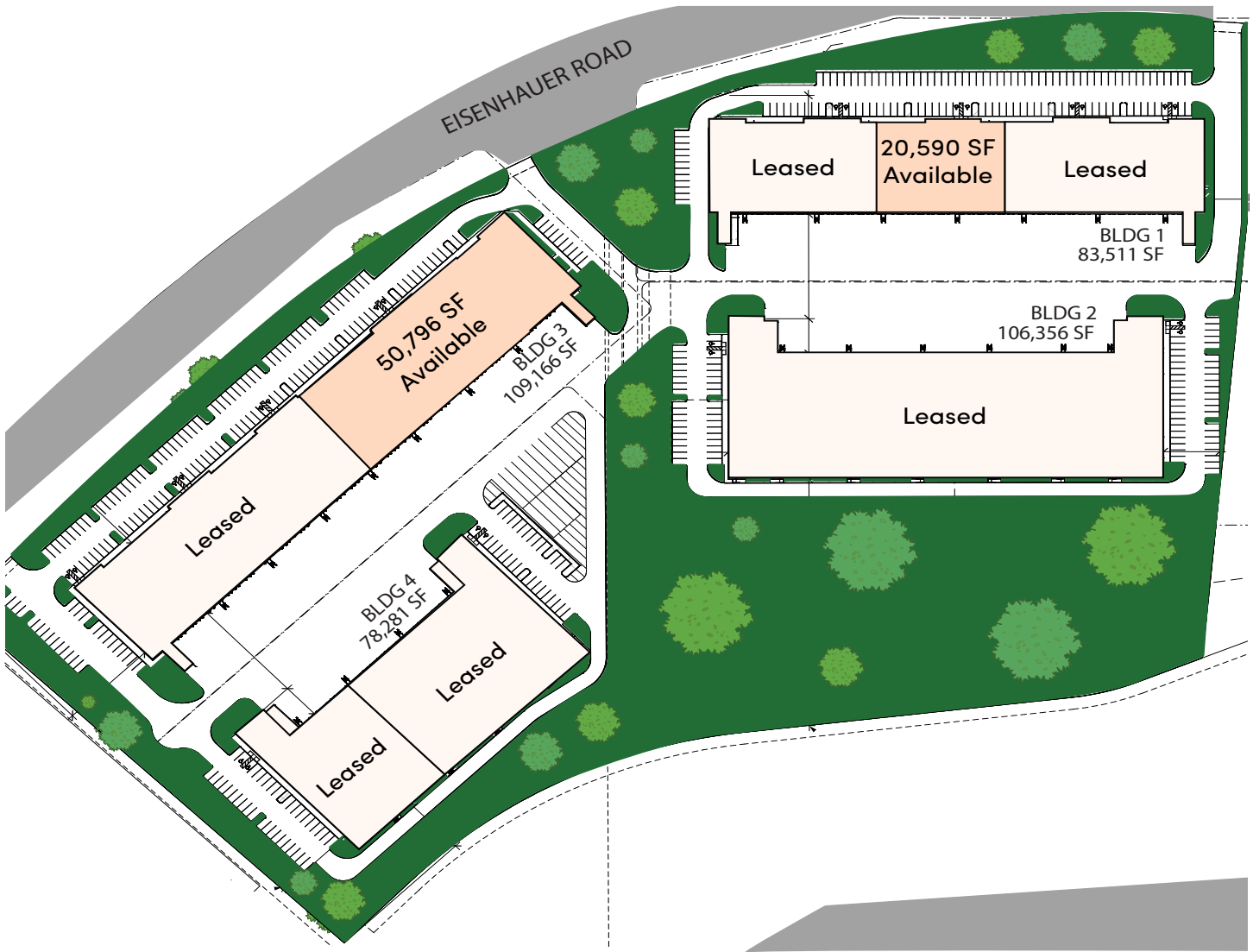
+1 (404) 824-3904

caleb.parikh@eqtpartners.com

# Eisenhower Business Park - Building 1

San Antonio, TX

## SITE PLAN



### Contact Us

Learn more about this property or schedule a tour by reaching out to our local investment and leasing officer.

**Barney Sinclair**

+1 (214) 476-6554

[barney.sinclair@eqtpartners.com](mailto:barney.sinclair@eqtpartners.com)

**Caleb Parikh**

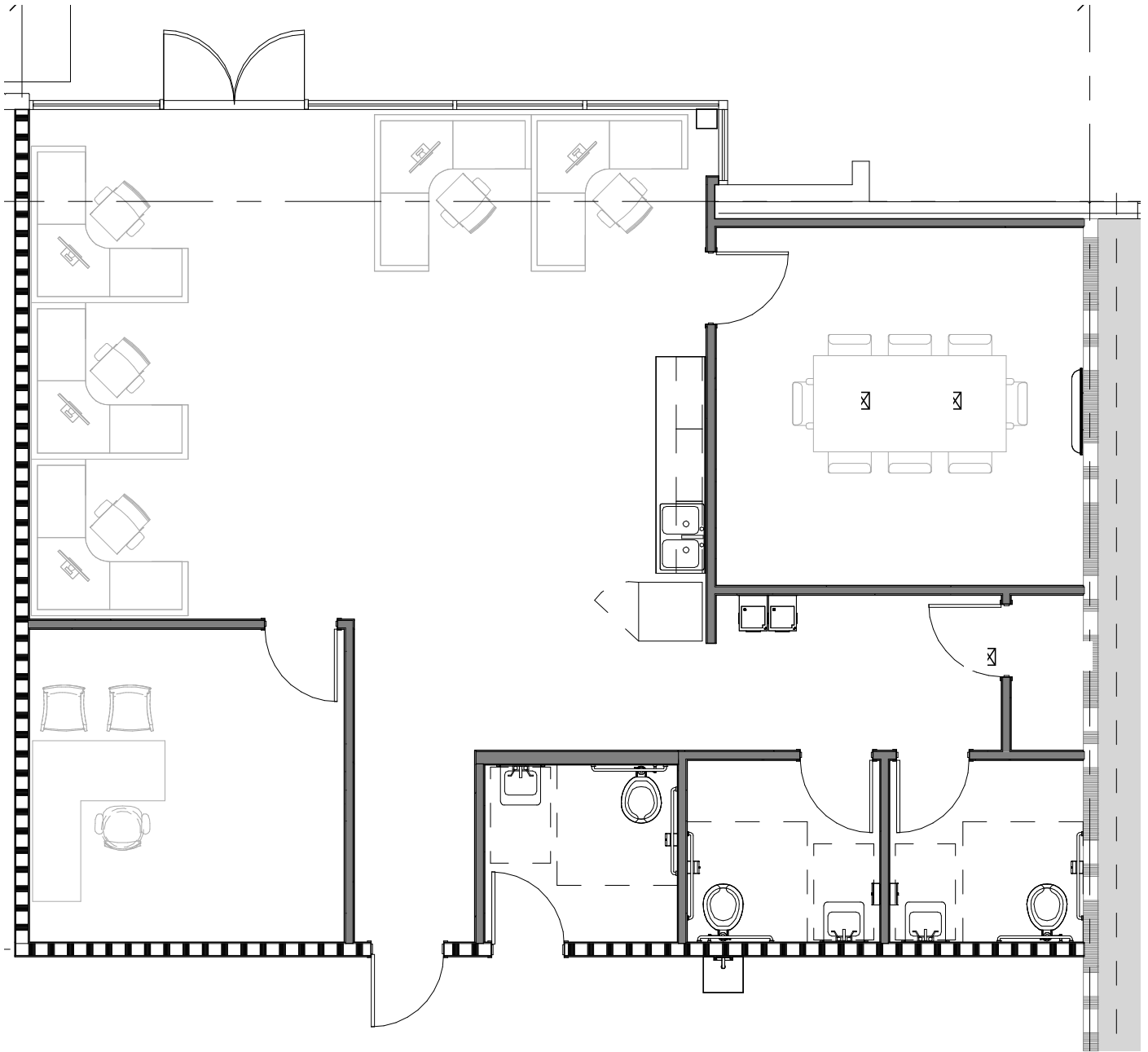
+1 (404) 824-3904

[caleb.parikh@eqtpartners.com](mailto:caleb.parikh@eqtpartners.com)

# Eisenhauer Business Park - Building 1

San Antonio, TX

## OFFICE PLAN



### Contact Us

Learn more about this property or schedule a tour by reaching out to our local investment and leasing officer.

**Barney Sinclair**

+1 (214) 476-6554

[barney.sinclair@eqtpartners.com](mailto:barney.sinclair@eqtpartners.com)

**Caleb Parikh**

+1 (404) 824-3904

[caleb.parikh@eqtpartners.com](mailto:caleb.parikh@eqtpartners.com)

# Eisenhower Business Park - Building 1

San Antonio, TX



## LOCATION ATTRIBUTES

- Premier infill distribution location
- Freeport Tax Abatement
- Located in a four building business park
- Access to dense labor/population base
- Easy access to IH-35, IH-10, Loop 1604, Hwy 281, IH-27, Fort Sam Houston and San Antonio International Airport

## Contact Us

Learn more about this property or schedule a tour by reaching out to our local investment and leasing officer.

**Barney Sinclair**

+1 (214) 476-6554

[barney.sinclair@eqtpartners.com](mailto:barney.sinclair@eqtpartners.com)

**Caleb Parikh**

+1 (404) 824-3904

[caleb.parikh@eqtpartners.com](mailto:caleb.parikh@eqtpartners.com)