



CUSHMAN &
WAKEFIELD

COMMERCIAL
OKLAHOMA

CITIZEN

NOW
LEASING

CITIZEN

600 N ROBINSON AVE
OKLAHOMA CITY, OK 73102



CITIZEN

PROPERTY HIGHLIGHTS

- **BUILDING SIZE:** ± 160,000 SF
 - **AVAILABLE SF:** ± 36,332 RSF
- | | |
|-------------|--------------|
| 7TH FLOOR: | ± 13,611 RSF |
| 8TH FLOOR: | ± 6,834 RSF |
| 11TH FLOOR: | ± 2,229 RSF* |
| 11TH FLOOR: | ± 6,810 RSF |
| 12TH FLOOR: | ± 6,778 RSF |
- STORIES:** 12
- LEASE RATE:** \$29.00 NNN

*Spec Suite - Available April 2026
See separate flyer for pricing and floorplan!

NOW LEASING

600 N ROBINSON AVE
OKLAHOMA CITY, OK 73102



Located in downtown Oklahoma City, the Citizen combines a modern social club with retail, office, executive workspace and an upscale hotel. The Citizen is a first-of-its-kind concept in Oklahoma City that blends work, leisure and community connection together. The 160,000-square-foot mid-rise building has expansive views of the city all around, including an overlook of the Oklahoma City National Memorial across the street.

204 N Robinson Ave, Ste 2000 | Oklahoma City, OK 73102
+ 1 405 563 5000 | commercialoklahoma.com

AVAILABLE

2 | CITIZEN

NOW AVAILABLE

600 N ROBINSON AVE
OKLAHOMA CITY, OK 73102

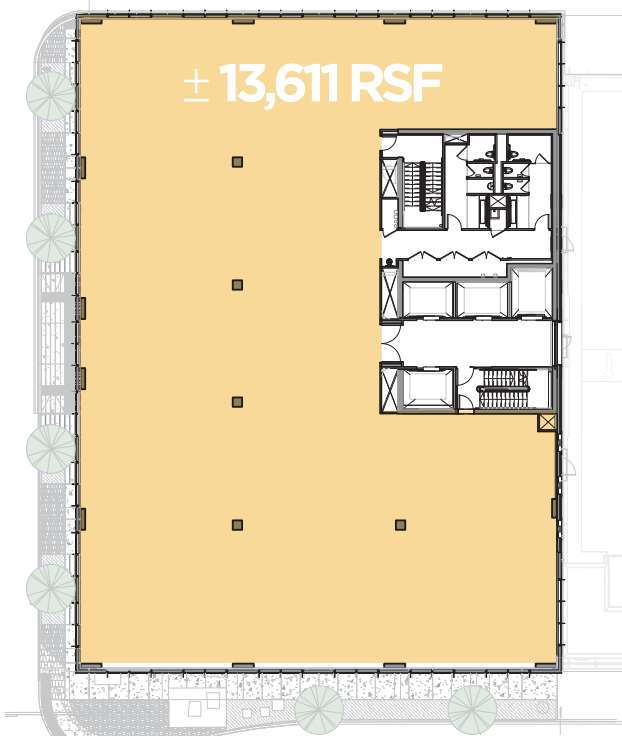


CUSHMAN &
WAKEFIELD

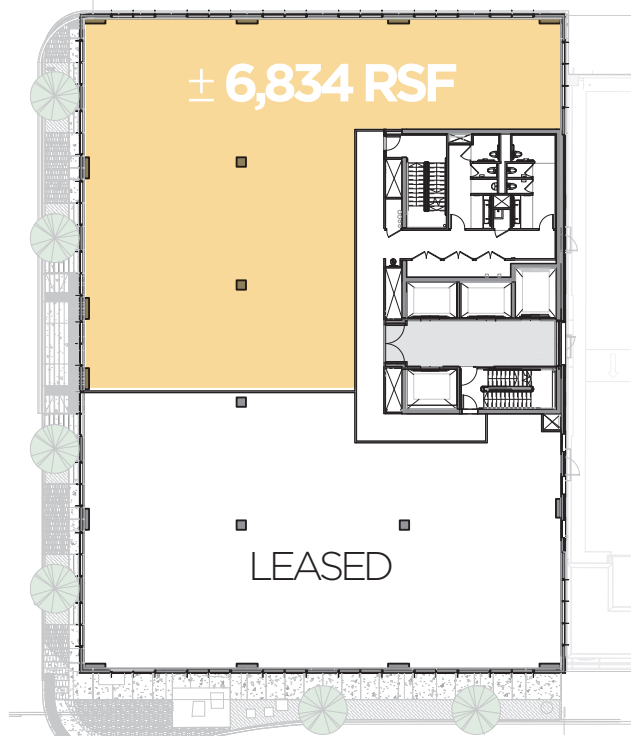
COMMERCIAL
OKLAHOMA



LEVEL 07



LEVEL 08



204 N Robinson Ave, Ste 2000 | Oklahoma City, OK 73102
+ 1 405 563 5000 | commercialoklahoma.com

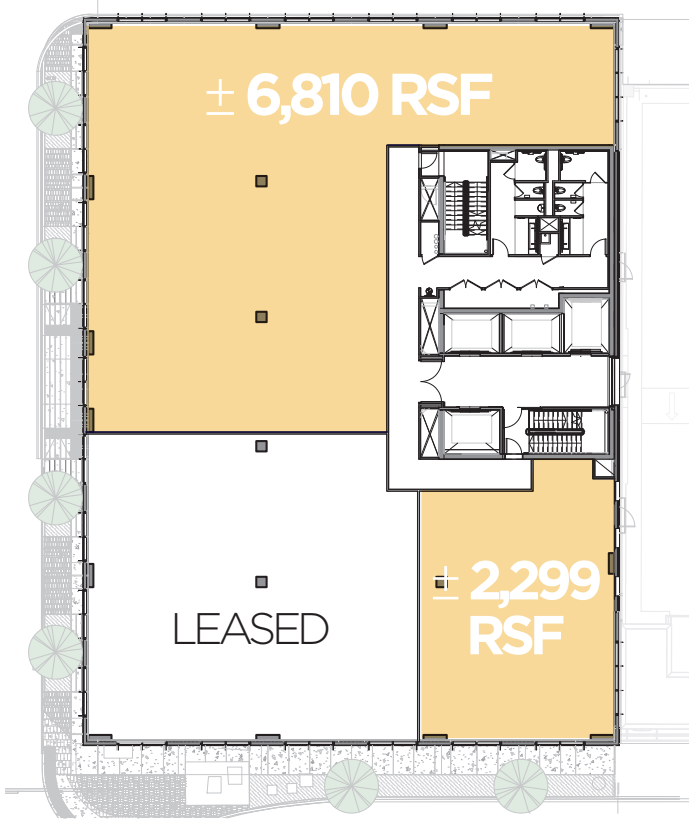
FOR LEASE

CITIZEN

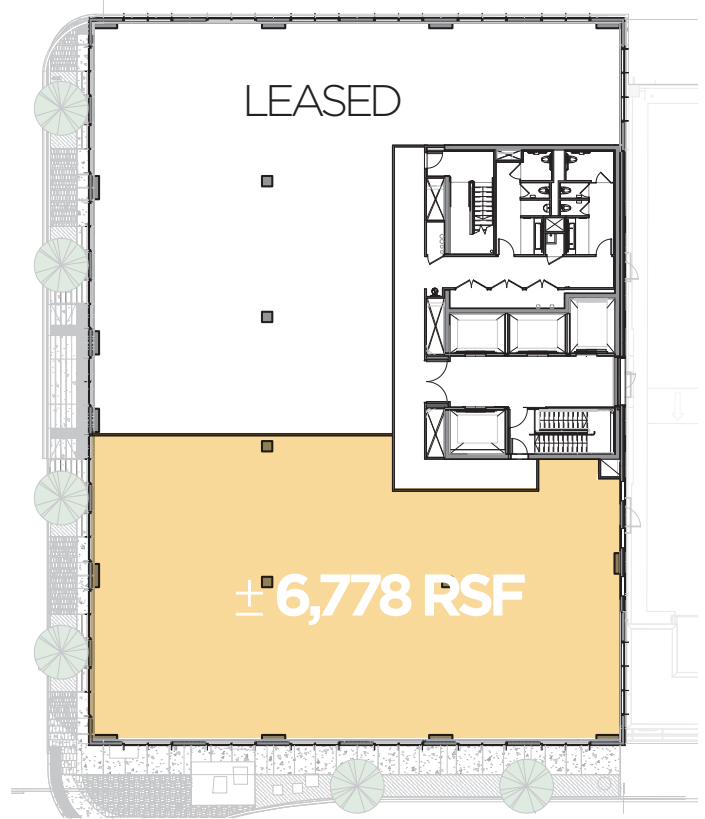
600 N ROBINSON AVE
OKLAHOMA CITY, OK 73102



LEVEL 11



LEVEL 12



**NOW
LEASING**

CONTACT US

VIVIENNE VOGLER

+1 405 570 8595

vvogler@commercialoklahoma.com

204 N Robinson Ave, Ste 2000 | Oklahoma City, OK 73102

+1 405 563 5000 | commercialoklahoma.com

MICAH SHERMAN, CCIM

+1 405 488 5548

msherman@commercialoklahoma.com

TRAVIS MASON

+1 405 297 9924

tmason@commercialoklahoma.com

©2026 Cushman & Wakefield | Commercial Oklahoma. Independently Owned and Operated / A Member of the Cushman & Wakefield Alliance
All rights reserved. The information contained in this communication is strictly confidential. This information has been obtained from sources believed to be reliable but has not been verified. No warranty or representation, express or implied, is made as to the condition of the property (or properties) referenced herein or as to the accuracy or completeness of the information contained herein, and same is submitted subject to errors, omissions, change of price, rental or other conditions, withdrawal without notice, and to any special listing conditions imposed by the property owner(s). Any projections, opinions or estimates are subject to uncertainty and do not signify current or future property performance.