

FLEX PROPERTY



FOR LEASE

4272 PROMENADE DRIVE SUITE 150
COLORADO SPRINGS, CO 80920



COLE UNDERWOOD

Broker Associate

Direct: (719) 200-4610

cole@coleunderwood.com



4272 Promenade Drive Suite 100
Colorado Springs, CO 80920

PROPERTY INFORMATION

Lease Rate:	\$29.00 NNN
Rentable Area:	2,500 SF
Land Area:	26, 673 SF
Zoning:	PBC
Class:	B
Buildings:	1
Year Built:	2023

PROPERTY DESCRIPTION

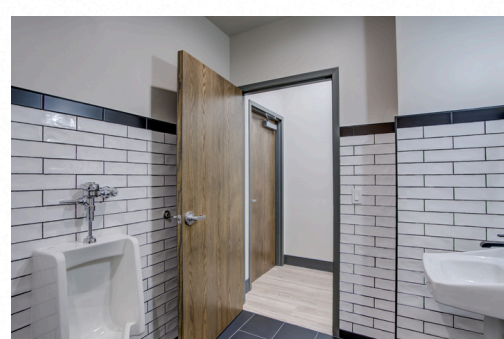
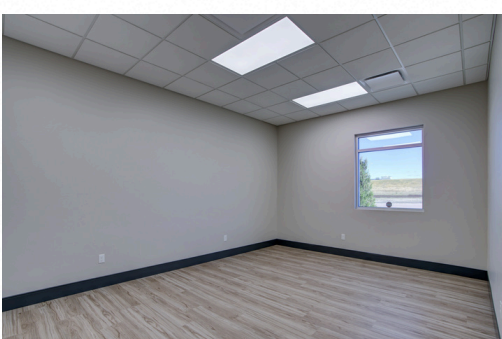
2,500 Square foot of office space. Next to Memorial Hospital and Children's Hospital. Easy access to I-25 and Powers. Space is in move in condition with 4 large private offices, 1 conference room, and reception/ waiting area. Plenty of parking. Signage available as well.

PROPERTY HIGHLIGHTS

- Excellent, Move in Condition
- Great location
- Easy access to I25, Powers Blvd, & Academy Blvd
- Near Lifetime Fitness & Lowes



PROPERTY PHOTOS



PROPERTY MAP

