

N. GRATIOT AVENUE
CLINTON TWP., MICHIGAN

LAND FOR SALE
1.40 Acres Available



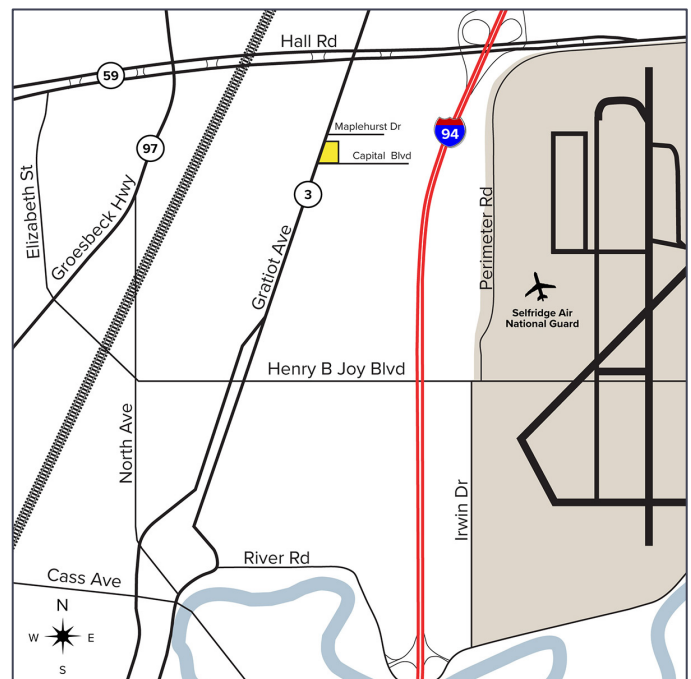
**SIGNATURE
ASSOCIATES**
KNOW SIGNATURE | KNOW RESULTS

DEVELOPMENT LAND



PROPERTY FEATURES

- 1.40 acres available
- Zoned B-3
- All utilities at site
- Cleared and ready for development
- Surrounded by activity and across the street from a hotel/convention center
- Excellent retail opportunity
- Sale Price: \$295,000 (\$210,714.29)



For more information, please contact:

STEVE GORDON
(248) 948 0101
sgordon@signatureassociates.com

BEN WILKIEMEYER
(248) 359 0624
bwilkiemeyer@signatureassociates.com

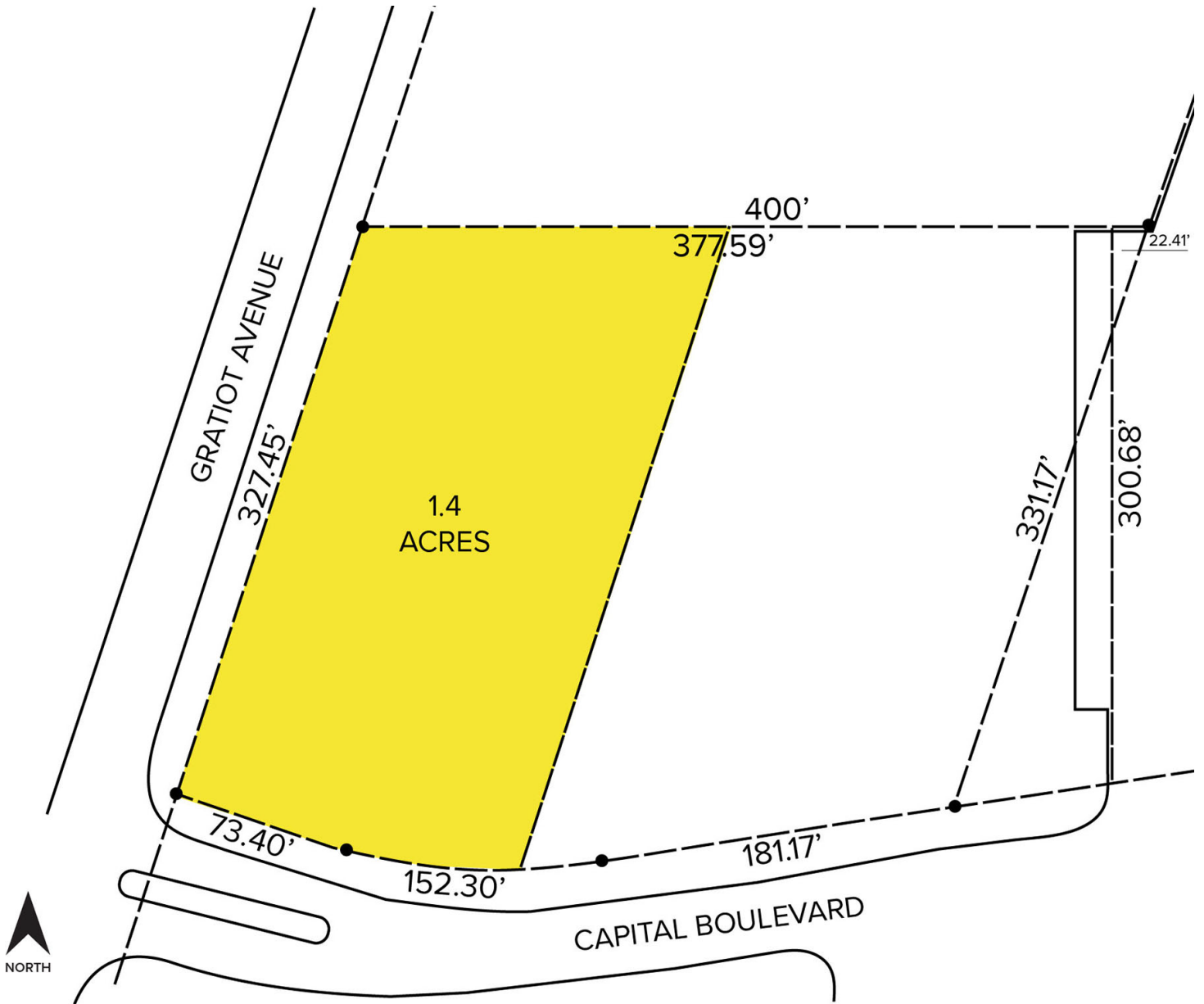
SIGNATURE ASSOCIATES
One Towne Square, Suite 1200
Southfield, MI 48076
www.signatureassociates.com

N. Gratiot Avenue – Clinton Twp., Michigan

Land For Sale

1.4
Acres
AVAILABLE

Site Plan



For more information, please contact:

STEVE GORDON

(248) 948 0101

sgordon@signatureassociates.com

BEN WILKIEMEYER

(248) 359 0624

bwilkiemeyer@signatureassociates.com

SIGNATURE ASSOCIATES

One Towne Square, Suite 1200

Southfield, MI 48076

www.signatureassociates.com