

# 1450 Oakbrook Drive - Suite 100

Norcross, GA

## Key Facts

Property type Industrial space

Building size 51,395 SF

Space available 2,233 SF



## Contact Us

Learn more about this property or schedule a tour by reaching out to our local investment and leasing officer.

**Gabriella Gianaccari**

+1 (215) 531-0836

[gabriella.gianaccari@eqtpartners.com](mailto:gabriella.gianaccari@eqtpartners.com)

# 1450 Oakbrook Drive - Suite 100

Norcross, GA

## BUILDING SPECIFICATIONS

---

Total Building Size: 51,395 SF

---

Available Space: 2,233 SF

---

Make ready in progress

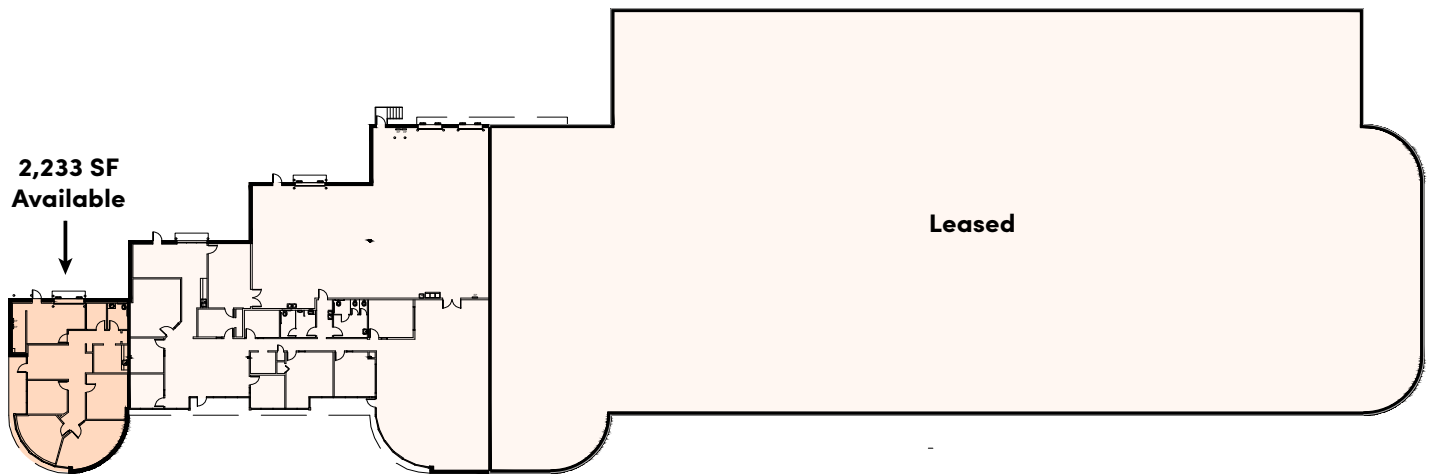
---

Office Space: 1,838 SF

---

Warehouse SF: 395 SF

---



## Contact Us

Learn more about this property or schedule a tour by reaching out to our local investment and leasing officer.

**Gabriella Gianaccari**

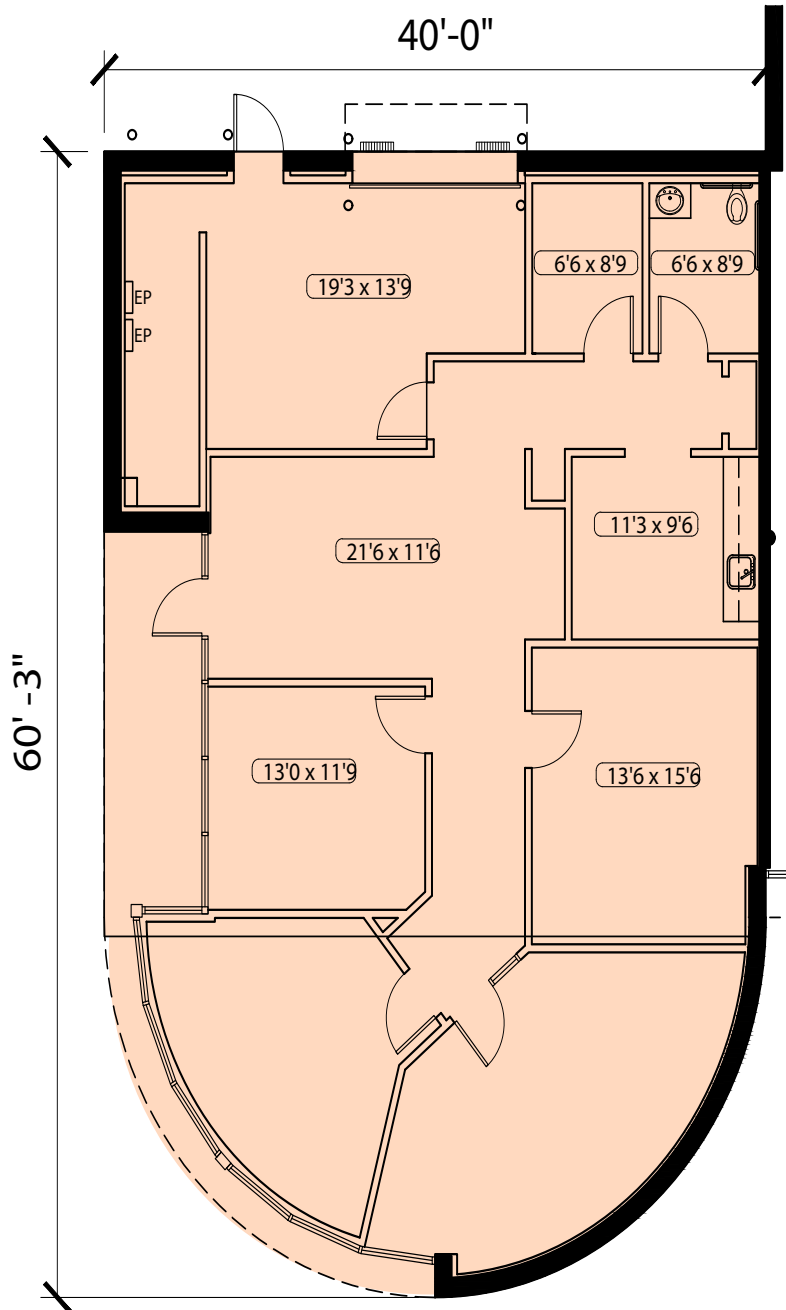
+1 (215) 531-0836

[gabriella.giannaccari@eqtpartners.com](mailto:gabriella.giannaccari@eqtpartners.com)

# 1450 Oakbrook Drive - Suite 100

Norcross, GA

## FLOOR PLAN



### Contact Us

Learn more about this property or schedule a tour by reaching out to our local investment and leasing officer.

**Gabriella Gianaccari**

+1 (215) 531-0836

[gabriella.gianaccari@eqtpartners.com](mailto:gabriella.gianaccari@eqtpartners.com)