

EASTLAKE BUSINESS CENTER

891
KUHN DRIVE
CHULA VISTA, CA 91914



± 1,463 SF OFFICE SPACES AVAILABLE FOR LEASE

KIMBERLY CHANELLE CLARK, ESQ.

Senior Vice President | Partner

858.458.3343 | kclark@voitco.com

Voit
REAL ESTATE SERVICES



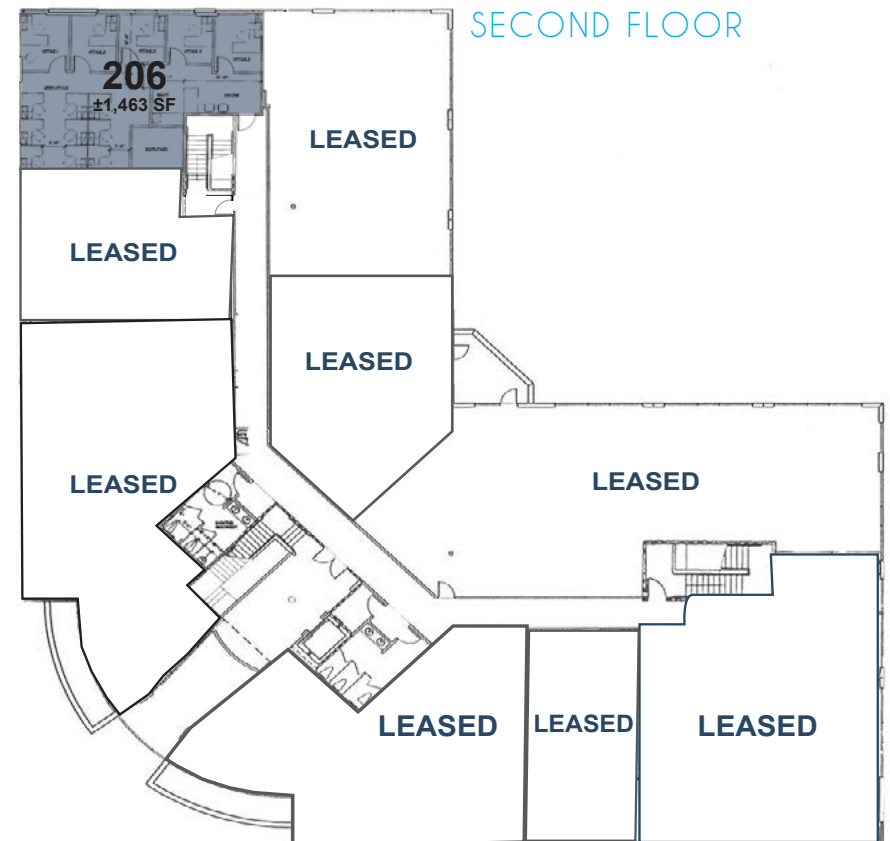
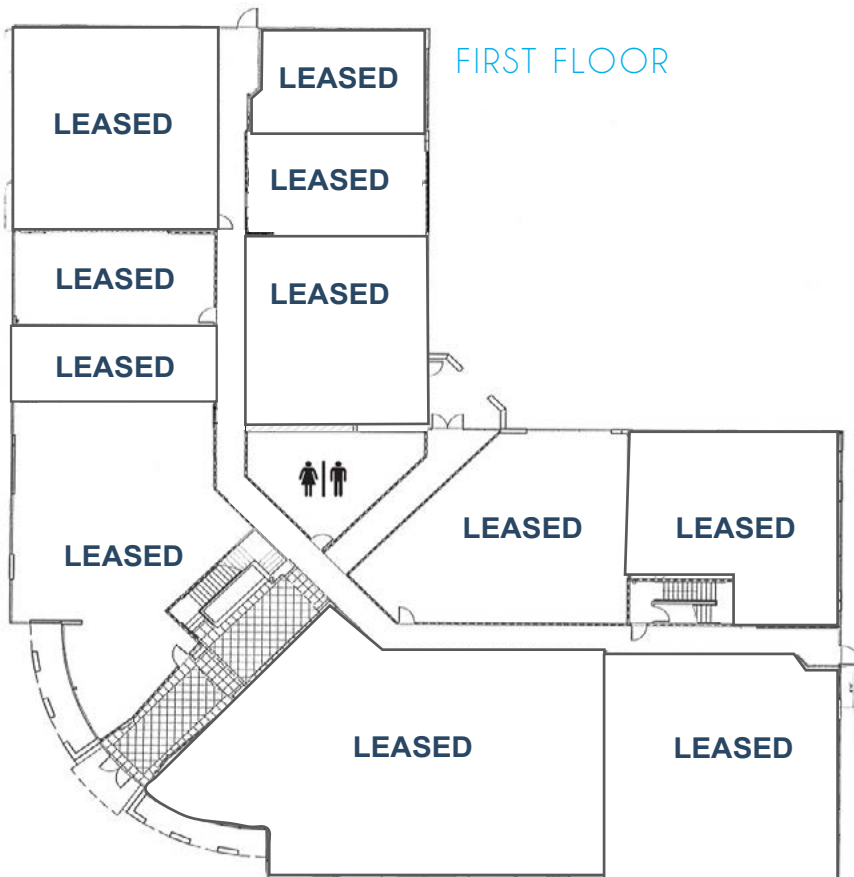
PROPERTY FEATURES

- ±38,196 RSF two story Class “A” office building
- Spaces available at ±1,463 RSF
- Competitive lease rate
- Abundant parking on-site
- Elevator served
- Eastlake master planned community
- Easy access to Highway 125
- High visibility corner location
- Restaurants and retail nearby
- Common Area recreational facilities



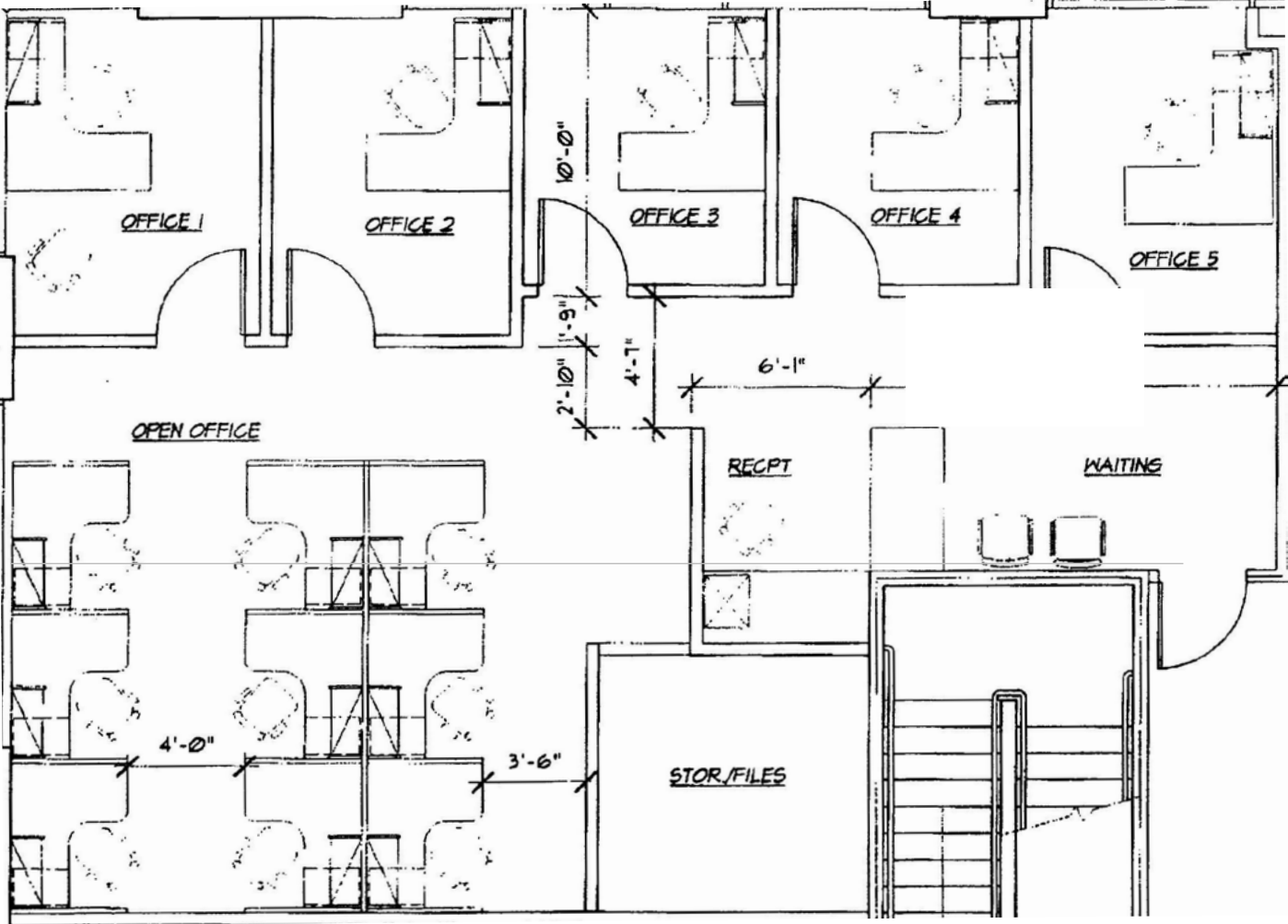
AVAILABILITY

SUITE	RSF	COMMENTS
206	±1,463	Reception, multiple offices, and open space



FLOOR PLAN

SUITE 206





KIMBERLY CHANELLE CLARK, ESQ.

Senior Vice President | Partner

Lic. # 01439305

858.458.3343

kclark@voitco.com

Voit

REAL ESTATE SERVICES

