

# FOR LEASE



## 150 Mount Vernon Street

Dorchester, Massachusetts

Available **office space** ranging from ±5,143 SF to 24,249 SF



### STEPHANIE DEERING

Executive Director  
sdeering@lee-associates.com  
781.608.5964

### SCOTT RICHMOND

Principal  
srichmond@lee-associates.com  
617.733.1504

CORCORAN  
JENNISON  
*Companies*

# PROPERTY OVERVIEW

150 Mount Vernon Street is a well-located, 128,700 SF office building in Dorchester's Bayside Office Center, offering **efficient layouts that work well for a variety of office users**, from traditional setups to more open, collaborative environments.

Positioned just off I-93 (Southeast Expressway) and within walking distance of the JFK/UMass MBTA station (Red Line and commuter rail), **the property provides convenient access** to Downtown Boston, Logan Airport, and the greater metro area.

The building offers a strong parking ratio with approximately **333 on-site spaces and is close to retail, dining, and waterfront amenities in nearby Columbia Point and South Boston**. With its combination of accessibility, parking, and a growing local workforce, 150 Mount Vernon Street is an attractive option for tenants seeking value-oriented office space with **immediate access to transit and major highways**.



Easy Access to I-93 & MBTA



On-Site Parking



Professionally Managed

## KEY TENANTS



## BUILDING SPECIFICATIONS

Year Built   Renovated	1984   2007
Building Class	B
Total RSF	±128,700 RSF
Typical Floor Size	±24,249 RSF
No. of Stories	Five (5)
Parking Ratio	2.02/1,000 SF
Parking Spaces	333 - Surface
Elevators	Yes



# AVAILABLE SPACE

Lower Level | ±5,143 - 15,659 SF

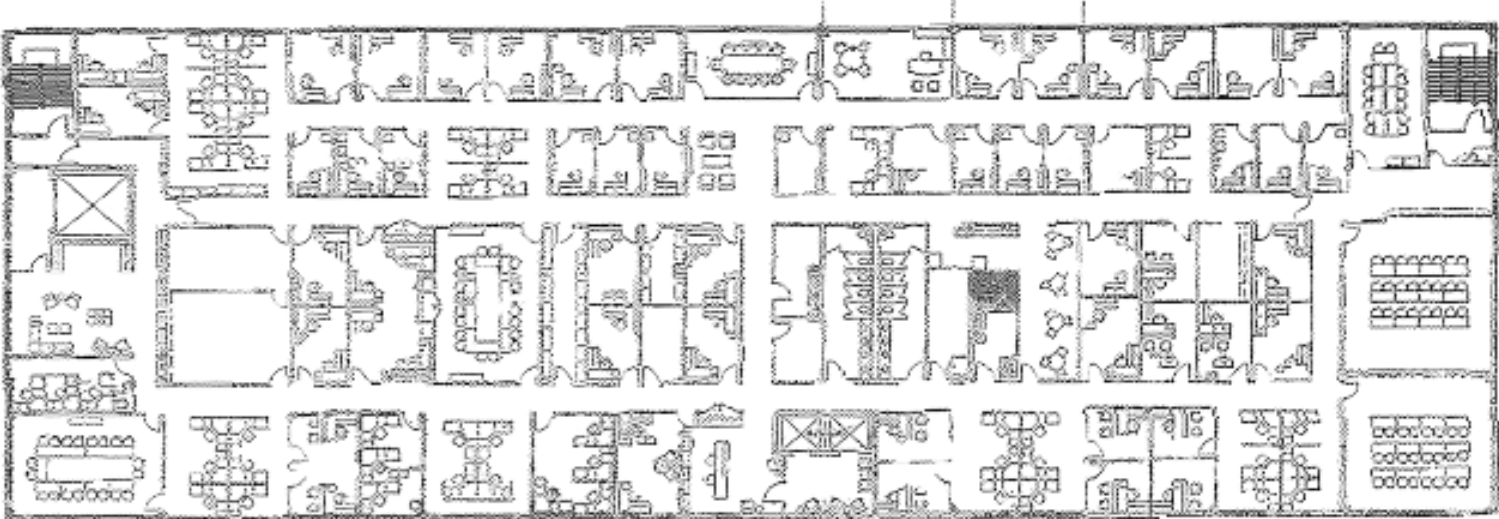


4th Floor | ±24,249 SF

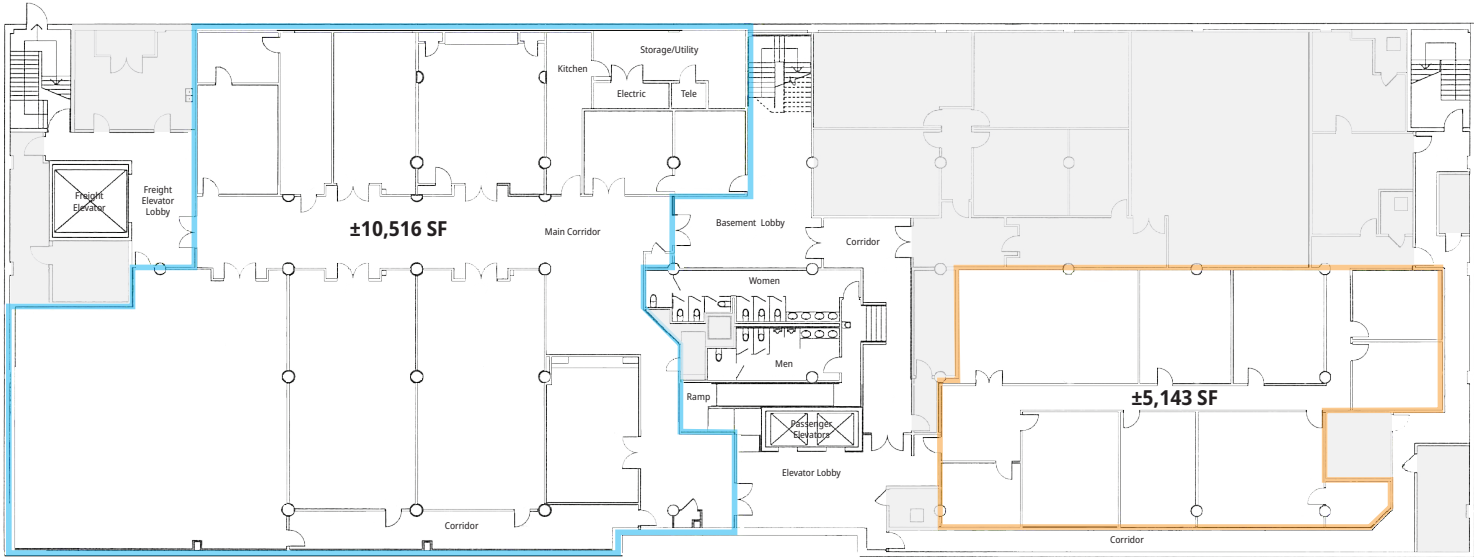


# FLOOR PLANS

## Fourth Floor



## Lower Level





JFK/UMass  
MBTA Station

**±0.2 Miles**



I-93/Southeast  
Expressway

**±0.7 Miles**



Logan Int'l.  
Airport

**±6.0 Miles**

**Area Amenities**

Bank of America  
Citizens Bank  
Dorchester Brewing Co.  
DoubleTree by Hilton

Dunkin'  
Harborpoint Liquors  
Osco Pharmacy  
Southbay Center

Southline Fitness Center  
Star Market  
Starbucks

**MBTA Commute Times\***

MBTA Station	Red Line		Commuter Rail	
	From JFK/UMass	To JFK/UMass	From JFK/UMass	To JFK/UMass
South Station	7 min	7 min	10 min	7 min
Downtown Crossing	9 min	8 min	-	-
Quincy Center	11 min	10 min	9 min	8 min
Braintree	18 min	18 min	15 min	14 min

\*Please visit [mbta.com](http://mbta.com) to view full schedules for the MBTA subway and commuter rail.



**Lee & Associates**

211 Congress Street, 10th Floor  
Boston, MA 02110  
[lee-associates.com/boston](http://lee-associates.com/boston)