

8300 Esters Blvd

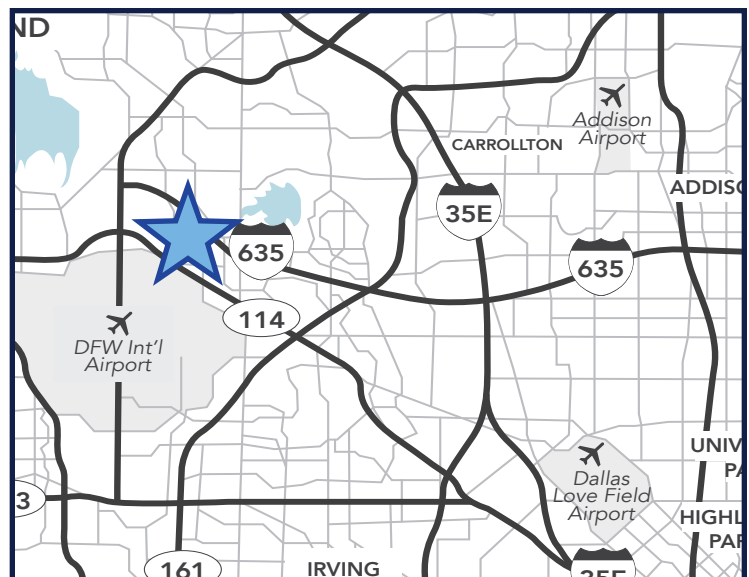
Suite 950, Irving, TX 75063



8,100 SF
Available

PROPERTY HIGHLIGHTS

- 8,100 SF Suite
- 2,723 SF Office
- 100% HVAC Warehouse
- 18' Clear Height
- One (1) Dock High Door



FOR LEASING INFORMATION, PLEASE CONTACT:

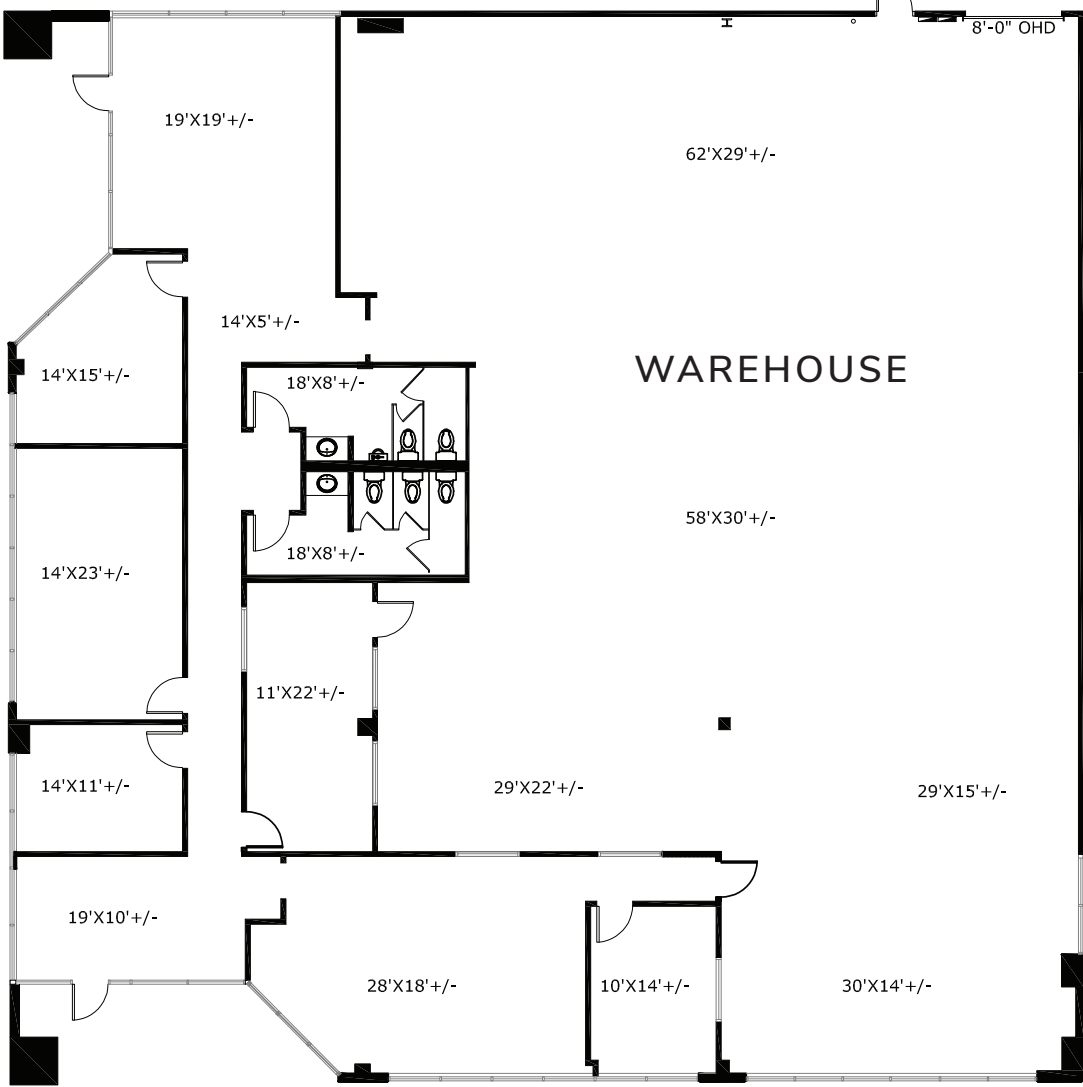
MAC HALL | 214.560.2371 | mac.hall@streamrealty.com
JEREMY KELLY | 214.210.1361 | jkelly@streamrealty.com
JESS JACOBY | 214.267.0487 | jess.jacoby@streamrealty.com



8300 Esters Blvd

Suite 950, Irving, TX 75063

8,100 SF
Available



FOR LEASING INFORMATION, PLEASE CONTACT:

MAC HALL | 214.560.2371 | mac.hall@streamrealty.com
JEREMY KELLY | 214.210.1361 | jkelly@streamrealty.com
JESS JACOBY | 214.267.0487 | jess.jacoby@streamrealty.com

