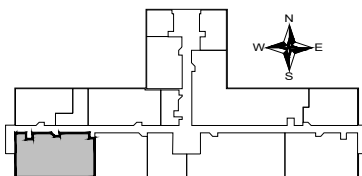


Suite 216 - 3,285 RSF
 Northwest Medical
 2210 Barron Road
 Poplar Bluff, MO 63901

KEY PLAN - SECOND FLOOR



Saint Francis
HEALTHCARE
 211 Saint Francis Drive
 Cape Girardeau, MO 63703
 Facilities Management
 (573) 331-5200

Scale:	None
Date:	2-6-2023
Drawn by:	DJA
Sheet #:	A2.11