



**SHOPPES OF
WILTON MANORS**
NEW CONSTRUCTION RETAIL FOR LEASE

2200-2292 WILTON DRIVE

Wilton Manors, FL 33305

For Lease By

NATIVE
REALTY[®]



PROPERTY DESCRIPTION

Located in the heart of Wilton Manors with direct Wilton Drive frontage, the Shoppes of Wilton Manors offers a rare opportunity to join one of South Florida's most vibrant retail corridors. The project features a mix of existing and newly planned retail spaces with flexible layouts suited for a variety of uses.

Designed as a dining and lifestyle destination, the property includes an expansive outdoor patio, 165 parking spaces, and a tenant mix heavily oriented toward food and beverage. Target uses include restaurants, cafés, dessert concepts, fitness, boutique retail, and health and wellness.

The development is complemented by 89 on-site residential units, creating a built-in customer base, and is surrounded by established shops, dining, and year-round pedestrian activity.

PROPERTY HIGHLIGHTS

- Prime Location – In the heart of Wilton Manors' vibrant retail and dining district
- Mixed-Use Development – Retail, dining, and residential living combined in one site
- Total Retail Space – 52,069 RSF across existing Building A and proposed Buildings B & C
- Ample Parking
- Multiple Units Available!

OFFERING SUMMARY

Base Rent:	Negotiable
NNN:	Estimated \$14/SqFt
Available SF:	1,500 - 7,280 SF
Lot Size:	236,071 SF
Building Size:	52,069 SF

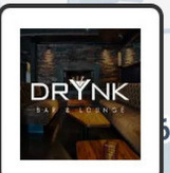
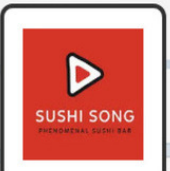
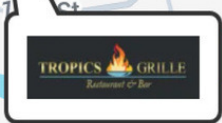
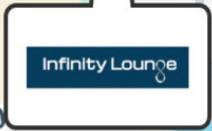
DEMOGRAPHICS

	3 MILES	5 MILES	7 MILES
Total Households	75,086	150,415	233,225
Total Population	158,065	341,530	553,675
Average HH Income	\$106,607	\$96,626	\$90,187

PERMITTED USES



Wilton Creamery
A DAIRY BAR



NE 26TH STREET
VPD 24,500

N DIXIE HWY
VPD 12,600

METROPOLITAN
179 UNITS

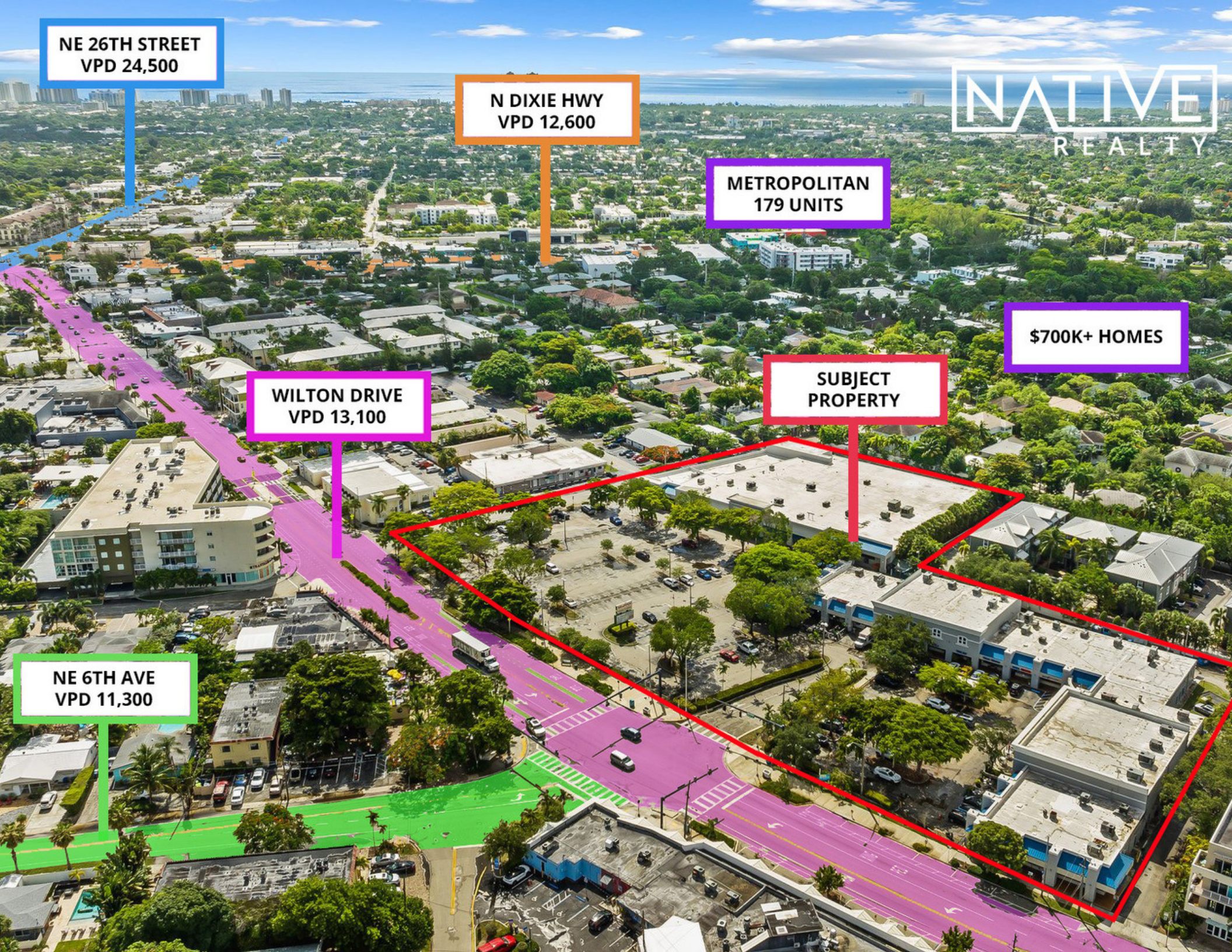
\$700K+ HOMES

WILTON DRIVE
VPD 13,100

**SUBJECT
PROPERTY**

NE 6TH AVE
VPD 11,300

NATIVE
REALTY



WILTON MANORS

Wilton Manors, Florida

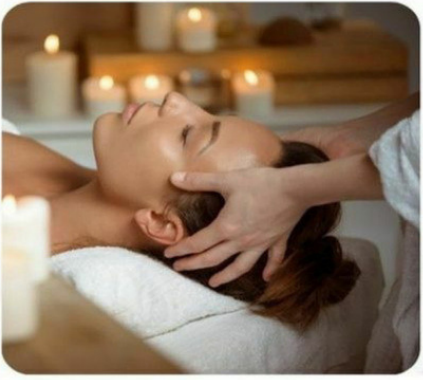


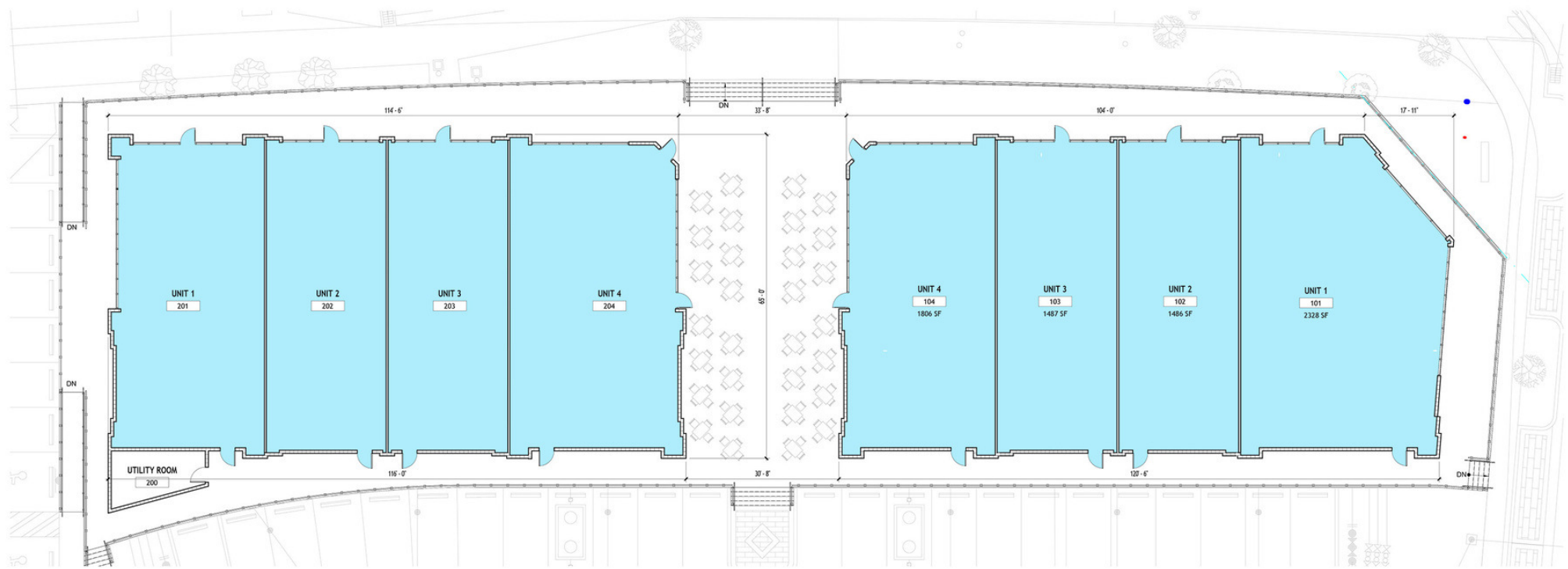
CONCEPT PLAN



North

PROSPECTIVE TENANT MOOD BOARD















NATIVE
REALTY®





The image shows a modern, light-colored building with a large palm tree on the left. The Native Realty logo is prominently displayed at the top. Below the logo, the names of two agents are listed. At the bottom, contact information and the address are provided. A red car is parked in the foreground on the left, and a white car is parked on the right.

NATIVE

REALTY®

JAIME STURGIS

KALEY TUNING

[NativeRealty.com](https://www.NativeRealty.com)

954.595.2999

Info@NativeRealty.com

1926 East Sunrise Blvd, Fort Lauderdale, FL 33304