

NOTTINGHAM CENTRE

664 Wye Road, Sherwood Park AB



Office/Retail Space for Lease Directly on Wye Road

FOR LEASE

**SABLE
REALTY**

Ali Shaben
President, Broker/Owner
780-446-8622
ali@sablerealty.ca

Diana Chehade
Associate
780-938-0476
diana@sablerealty.ca

Noah Issa
Vice President
780-236-5723
noah@sablerealty.ca

PROPERTY DETAILS

Municipal Address	664 Wye Road, Sherwood Park AB
Legal Address	Plan: 9722176, Block 216, Lot 2
Possession	Immediate
Zoning	C1 - Community Commercial

Size	1,271 Sq Ft
Basic Rent	Market Rent
Additional Rent	\$12.00 PSF

PROPERTY HIGHLIGHTS

71,307

Population Within 5km

\$169K

Average Household
Income Within 5km

25,665

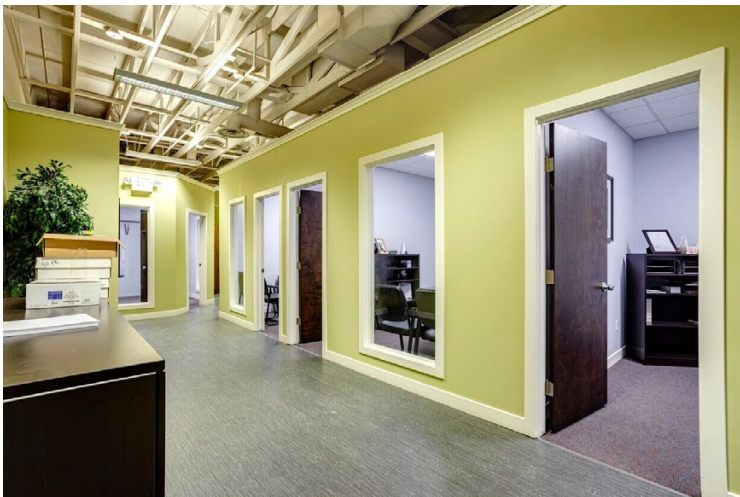
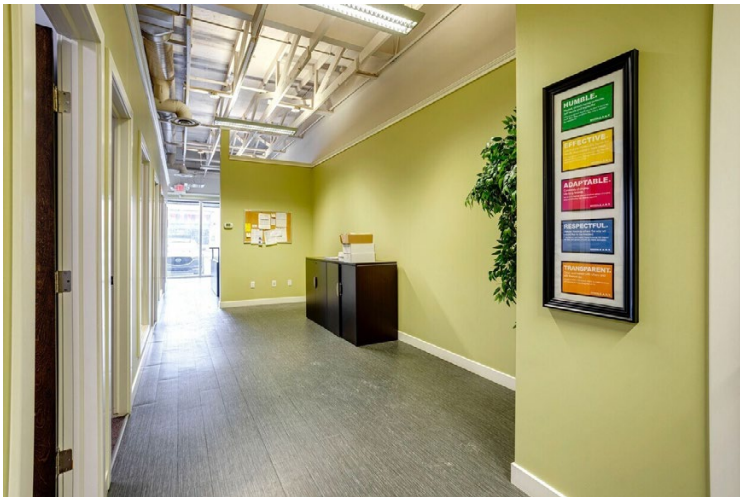
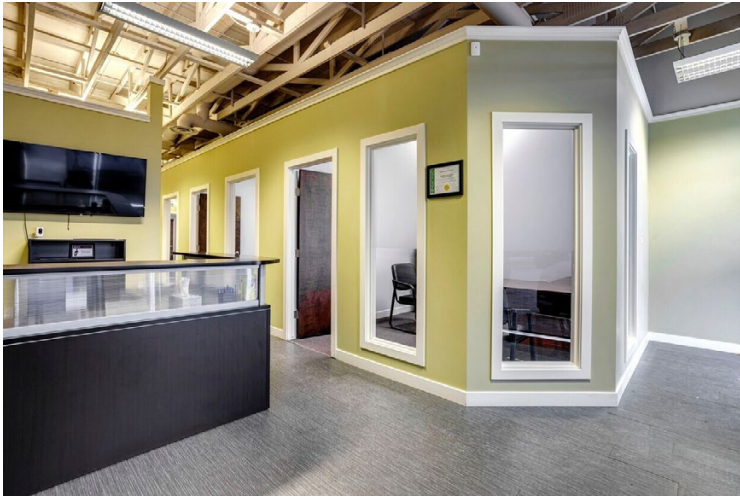
Households Within 5km



FOR LEASE | Nottingham Centre: 664 Wye Road, Sherwood Park AB

SABLE REALTY: NOAH ISSA 780-236-5723 | ALI SHABEN 780-446-8622 | DIANA CHEHADE 780-938-0476
15035 - 121A Avenue, Edmonton, Alberta T5V 1P3 | www.sablerealty.ca

SABLE
REALTY



FOR LEASE | Nottingham Centre: 664 Wye Road, Sherwood Park AB

SABLE REALTY: NOAH ISSA 780-236-5723 | ALI SHABEN 780-446-8622 | DIANA CHEHADE 780-938-0476

15035 - 121A Avenue, Edmonton, Alberta T5V 1P3 | www.sablerealty.ca





This document has been prepared by Sable Realty for advertising and general information only. Sable Realty makes no guarantees, representations or warranties of any kind, expressed or implied, regarding the information including, but not limited to, warranties of content, accuracy and reliability. Any interested party should undertake their own inquiries as to the accuracy of the information. Sable Realty excludes unequivocally all inferred or implied terms, conditions and warranties arising out of this document and excludes all liability for loss and damages arising therefrom.

FOR LEASE | Nottingham Centre: 664 Wye Road, Sherwood Park AB

SABLE REALTY: NOAH ISSA 780-236-5723 | ALI SHABEN 780-446-8622 | DIANA CHEHADE 780-938-0476
 15035 – 121A Avenue, Edmonton, Alberta T5V 1P3 | www.sablerealty.ca

