

1750 K ST NW

Washington, DC 20006

Office For Lease

3,754 - 12,911 SF



Leasing Information:
202.513.6700

Lincoln

Merrill Turnbull
202.513.6713
mturnbull@lpc.com

Adam Biberaj
202.513.6736
abiberaj@lpc.com

Tim Whitebread
202.513.6712
twhitebread@lpc.com

McKay Elliott
202.513.6724
melliott@lpc.com

101 Constitution Avenue NW
Suite 325 East
Washington, DC 20001

www.lpc.com

1750 K ST NW

Washington, DC 20006

Office For Lease

3,754 - 12,911 SF



Property Highlights

- Heart of downtown Washington, DC located on K Street
- Walking distance to Farragut West and Farragut North Metro stations
- Energy Star Labeled
- Plug-and-Play Space Available for office-intensive users
- Single offices on shared floor for executive office needs

Availabilities

SF

Lease Rate

Date Available

	Availabilities	SF	Lease Rate	Date Available
	Typical Floor	12,508 SF	Negotiable	Immediately
	Lower Level	12,911 SF	Negotiable	Immediately
	1st Floor	10,300 SF	Negotiable	Immediately
	Mezzanine	5,260 SF	Negotiable	Immediately
	2nd Floor	6,254 SF	Negotiable	Immediately
	3rd Floor	12,508 SF	Negotiable	Immediately
	Suite 400	3,754 SF	Negotiable	Immediately
	Suite 450	6,803 SF	Negotiable	Immediately
	5th Floor	12,508 SF	Negotiable	Immediately
	6th Floor	12,508 SF	Negotiable	Immediately
	7th Floor	12,508 SF	Negotiable	Immediately
	8th Floor	12,508 SF	Negotiable	Immediately
	9th Floor	12,508 SF	Negotiable	Immediately
	10th Floor	12,508 SF	Negotiable	Immediately
	11th Floor	11,654 SF	Negotiable	Immediately
	12th Floor	10,526 SF	Negotiable	Immediately

Merrill Turnbull

202.513.6713
mturnbull@lpc.com

Adam Biberaj

202.513.6736
abiberaj@lpc.com

Tim Whitebread

202.513.6712
twhitebread@lpc.com

McKay Elliott

202.513.6724
melliott@lpc.com

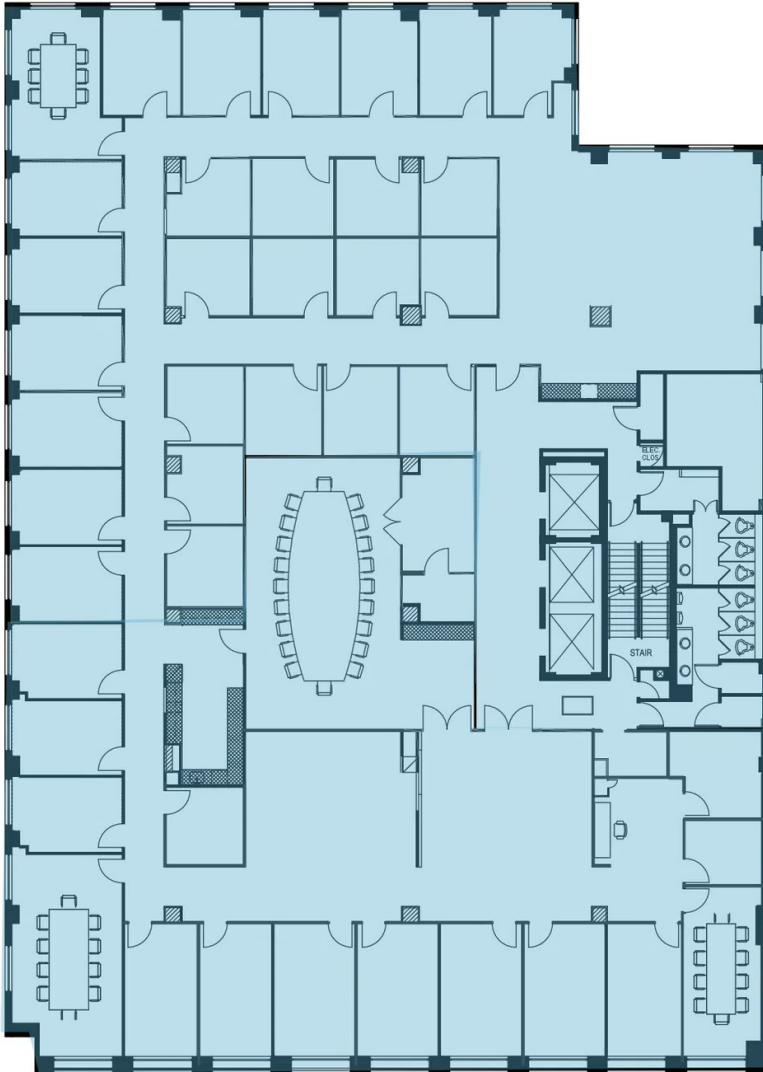
Lincoln

1750 K ST NW

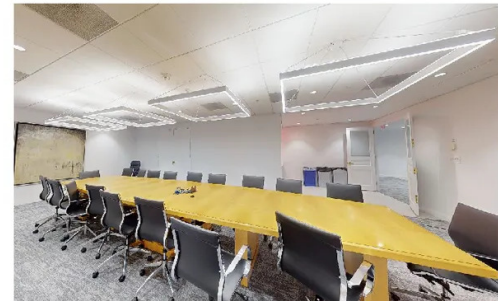
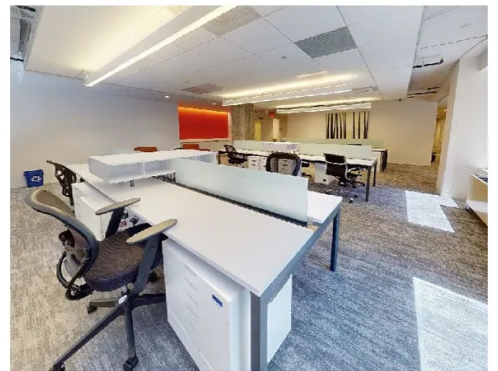
Washington, DC 20006

2nd Floor

6,254 SF



K Street



Suite	Size	Description	Virtual Tour
■ 2nd Floor	6,254 SF	Available Immediately. Furnished, move-in ready space!	View Here

Merrill Turnbull

202.513.6713
mturnbull@lpc.com

Adam Biberaj

202.513.6736
abiberaj@lpc.com

Tim Whitebread

202.513.6712
twhitebread@lpc.com

McKay Elliott

202.513.6724
melliott@lpc.com

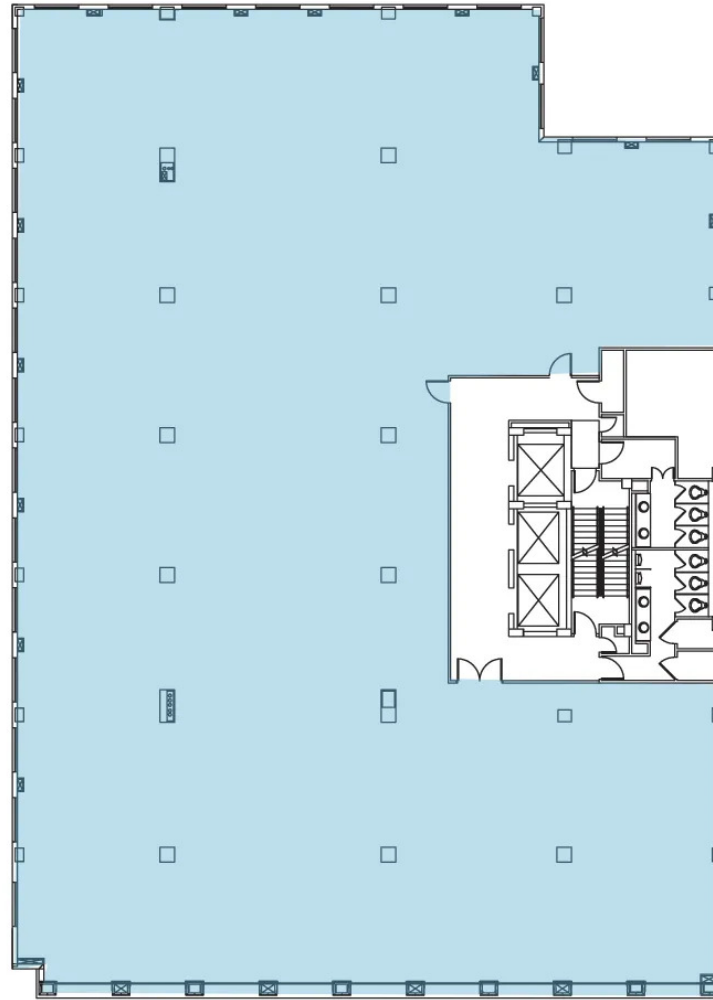
Lincoln

1750 K ST NW

Washington, DC 20006

Typical Floorplan

12,508 SF



Suite	Size	Description
■ Typical Floor	12,508 SF	Full Floors Available Immediately

Merrill Turnbull

202.513.6713
mturnbull@lpc.com

Adam Biberaj

202.513.6736
abiberaj@lpc.com

Tim Whitebread

202.513.6712
twhitebread@lpc.com

McKay Elliott

202.513.6724
melliott@lpc.com

Lincoln



1750 K ST NW

Washington, DC 20006

Leasing Information:
202.513.6700

Merrill Turnbull
202.513.6713
mturnbull@lpc.com

Adam Biberaj
202.513.6736
abiberaj@lpc.com

Tim Whitebread
202.513.6712
twhitebread@lpc.com

McKay Elliott
202.513.6724
melliott@lpc.com

Lincoln

101 Constitution Avenue NW
Suite 325 East
Washington, DC 20001

www.lpc.com