

553 - 555 E. GRAND RIVER AVENUE
EAST LANSING, MICHIGAN



**SIGNATURE
ASSOCIATES**
KNOW SIGNATURE | KNOW RESULTS

RETAIL FOR LEASE

2,290 – 3,100 Square Feet Available



PROPERTY FEATURES

- **Unit 553** – 2,290 square feet available
- D.P. Dough Restaurant with limited FF&E includes hold system
- Available August 2026
- DO NOT APPROACH EMPLOYEES – CONTACT BROKER
- **Unit 555** – 3,100 square feet available
- Directly across from MSU main campus at Collingwood entrance
- Surrounded by several national retailers along a busy Grand River Avenue corridor
- Excellent for retail, medical, office, services or restaurant
- Lease Rate: \$24.00/sq. ft. NNN



For more information, please contact:

MARVIN PETROUS
(248) 359 0647
mpetrous@signatureassociates.com

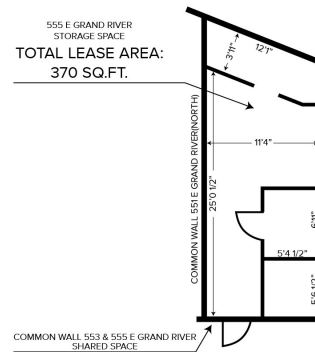
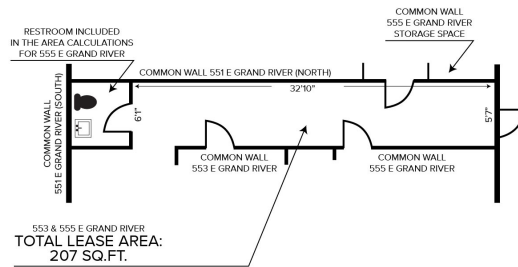
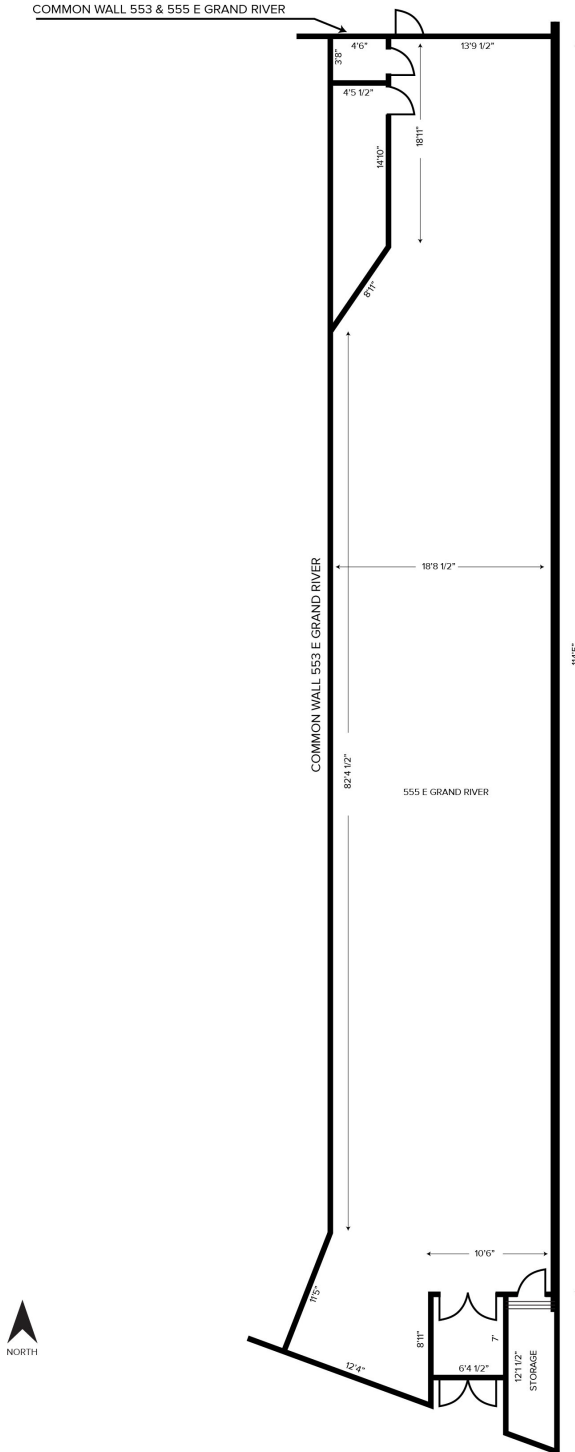
SIGNATURE ASSOCIATES
One Towne Square, Suite 1200
Southfield, MI 48076
www.signatureassociates.com

553 - 555 E. Grand River Ave – East Lansing, Michigan

Retail For Lease

2,290 - 3,100
Square Feet
AVAILABLE

Floor Plan – Unit 555



For more information, please contact:

MARVIN PETROUS
(248) 359 0647
mpetrous@signatureassociates.com

SIGNATURE ASSOCIATES
One Towne Square, Suite 1200
Southfield, MI 48076
www.signatureassociates.com

553 - 555 E. Grand River Ave – East Lansing, Michigan
Retail For Lease

2,290 - 3,100
Square Feet
AVAILABLE

Interior Photo – Unit 555



For more information, please contact:

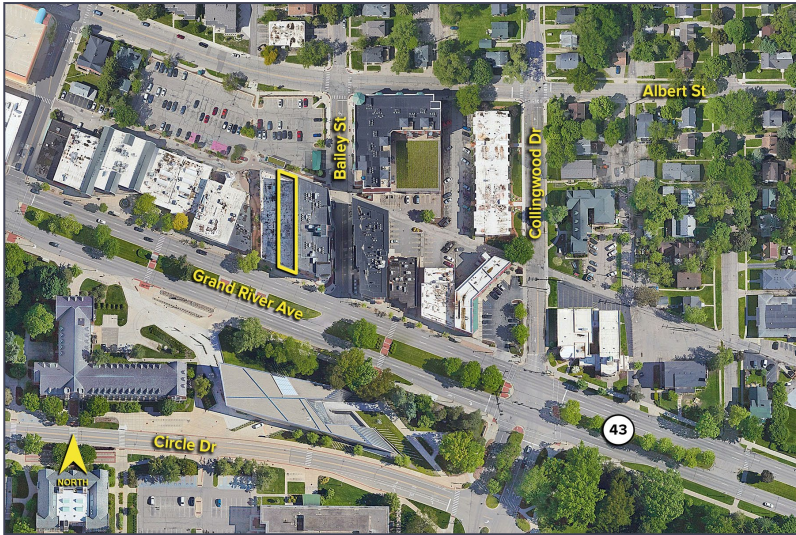
MARVIN PETROUS
(248) 359 0647
mpetrous@signatureassociates.com

SIGNATURE ASSOCIATES
One Towne Square, Suite 1200
Southfield, MI 48076
www.signatureassociates.com

553 - 555 E. Grand River Ave – East Lansing, Michigan

Retail For Lease

2,290 - 3,100
Square Feet
AVAILABLE



DEMOGRAPHICS

	POPULATION	MED. HH INCOME
1 MILE	28,249	\$51,504
3 MILE	86,442	\$63,622
5 MILE	171,852	\$68,559

TRAFFIC COUNTS (TWO-WAY)

25,284	Grand River Ave. NE of Bailey St.
25,069	Grand River Ave. SE of Bailey St.
17,625	Michigan Ave. S. of Grand River Ave.
1,930	Bailey St. N. of Grand River Ave.



For more information, please contact:

MARVIN PETROUS
(248) 359 0647
mpetrous@signatureassociates.com

SIGNATURE ASSOCIATES
One Towne Square, Suite 1200
Southfield, MI 48076
www.signatureassociates.com