



# DIABLO TECHNOLOGY CENTER

FOR LEASE | 5870 STONERIDGE DR & 4511 WILLOW RD | PLEASANTON, CA



KIDDER.COM

OWNED &  
MANAGED BY



## DIABLO TECHNOLOGY CENTER

*Flex Light Distribution Space  
Available For Lease*

Class A office R&D

Direct access and identity to suite from parking lot

Grade level roll-up door

18' Clear heights

3.7/1,000 parking ratio

Dublin/Pleasanton Bart Station 1 mile away

Conveniently located in close proximity to shopping, restaurants, and the I-580/I-680 freeways

## 5870 STONERIDGE DR, PLEASANTON

*+21,294*

TOTAL RSF

*NOW*

AVAILABLE FOR LEASE

## 4511 WILLOW RD, PLEASANTON

*+14,479*

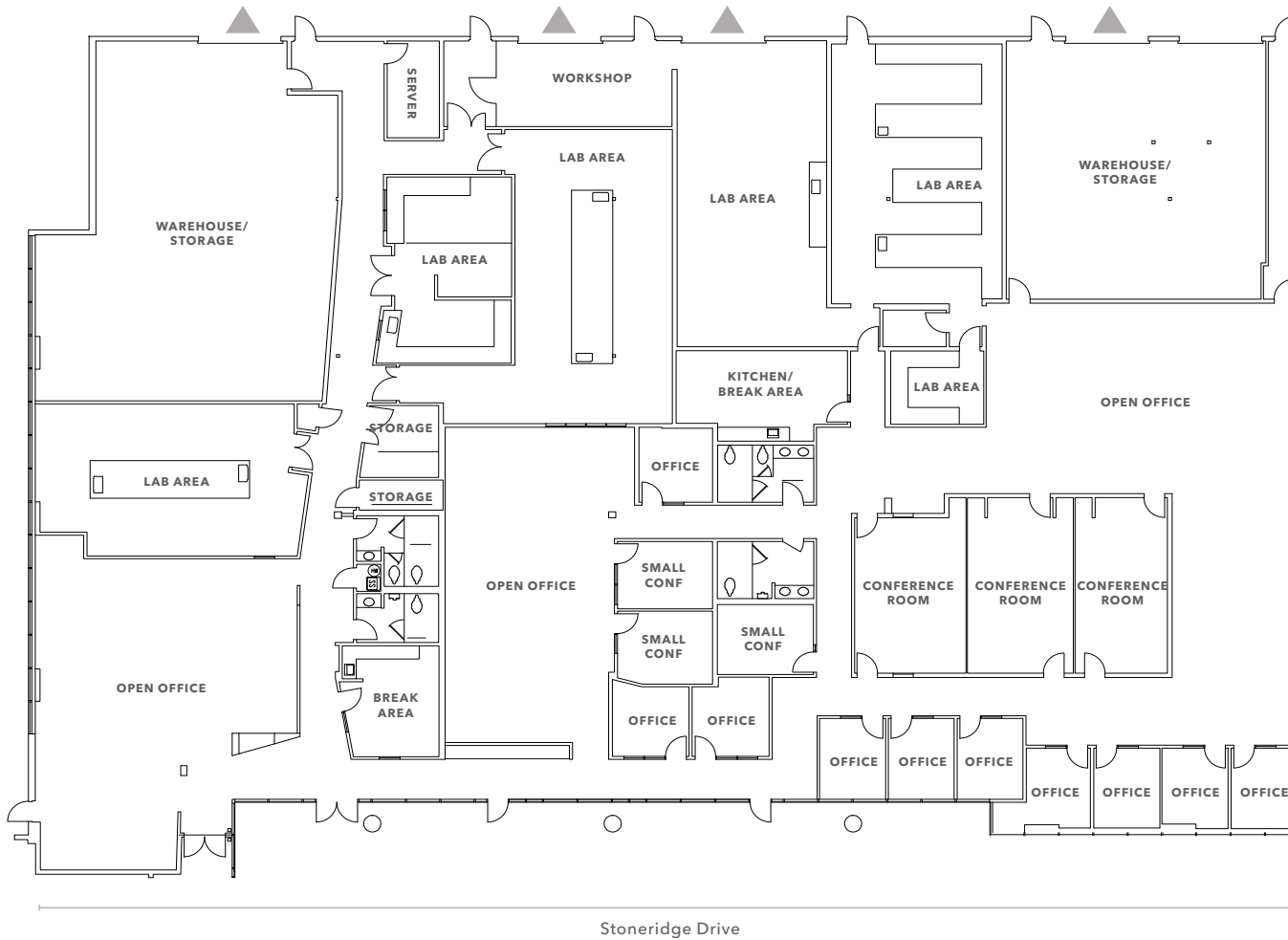
TOTAL RSF

*NOW*

AVAILABLE FOR LEASE



# 5870 STONERIDGE DR, SUITES 3-5



**+21,294 SF**

TOTAL RSF

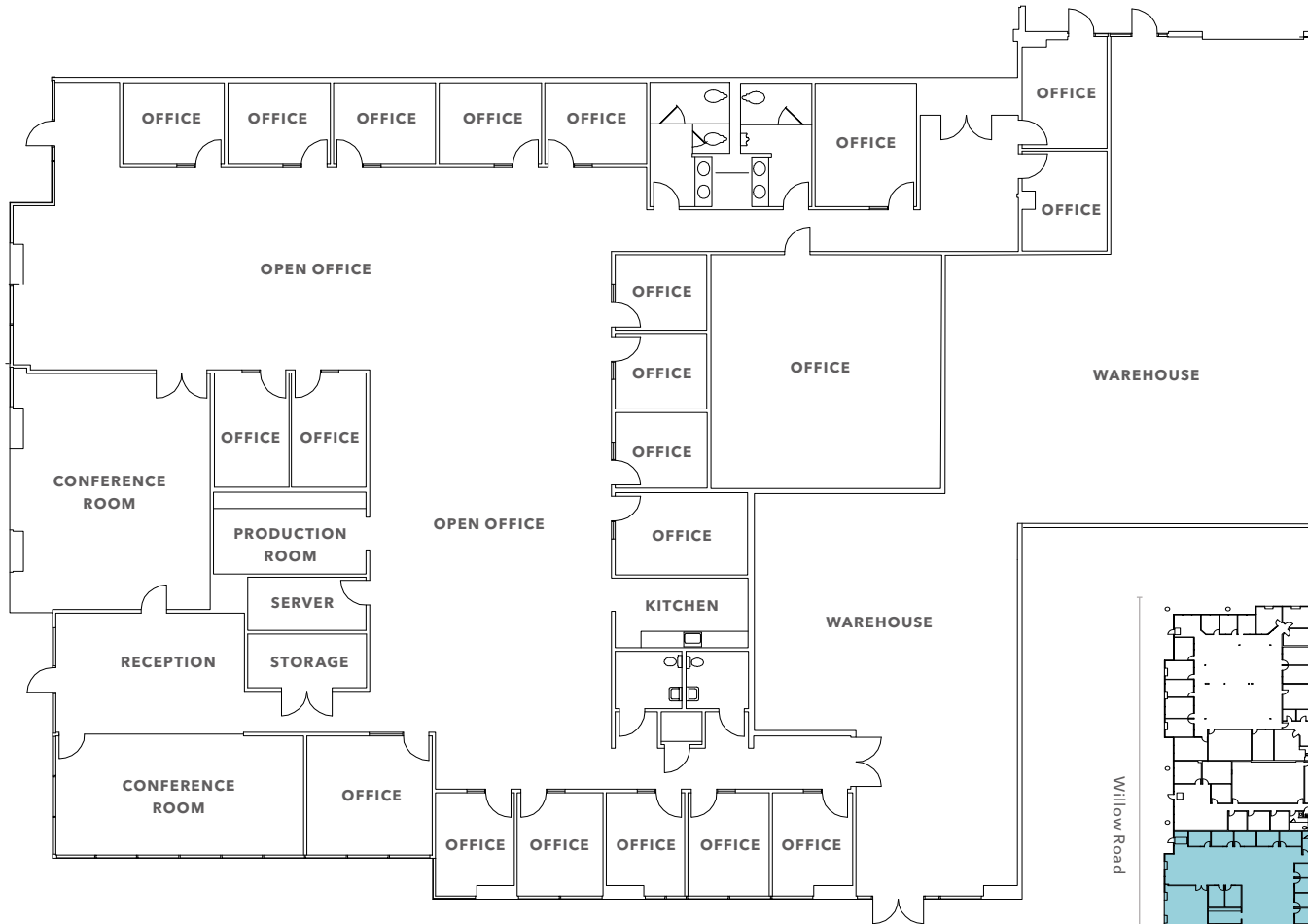
**NOW**

AVAILABLE FOR LEASE

▲ Grade level loading

FLOOR PLAN NOT TO SCALE

# 4511 WILLOW RD, SUITES 3-3



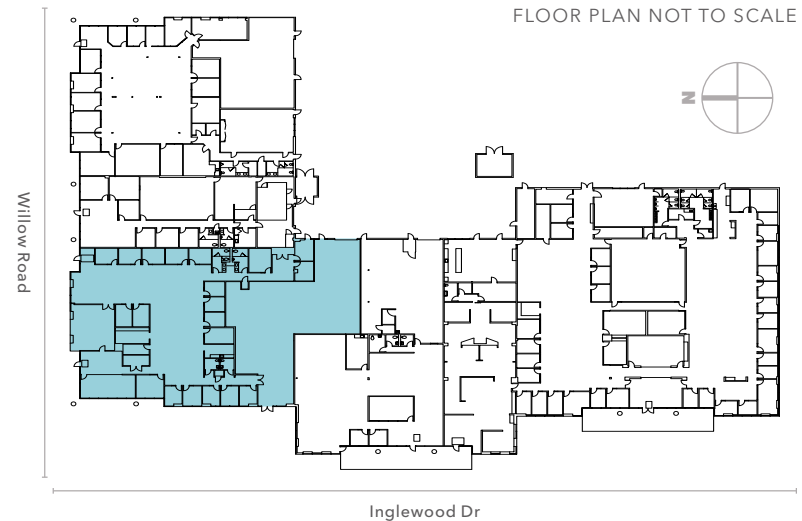
*+14,479 SF*

TOTAL RSF

*JAN 2025*

AVAILABLE

FLOOR PLAN NOT TO SCALE





**BART STATION**  
Dublin / Pleasanton

- VILLA SPORT
- Starbucks
- Black Bear
- FOUR POINTS BY SHERATON
- COURTYARD BY RADISSON

**GATEWAY SQUARE**

- 7-Eleven
- UPS
- Abundant Table
- DRAFT
- CHEESE STEAK
- SUSHI

**THE CROSSROADS**

- AT&T
- CHASE
- WELLS FARGO
- Jamba Juice
- Starbucks
- SUBWAY
- Pocket Sushi
- THE HONEY BAKED HAM
- AappaKadai

- 24 HOURS
- UNITED STATES POSTAL SERVICE
- HYATT house
- STAY AMERICA

**BART STATION**  
1 Mile Walk

**4511 WILLOW RD**

- THE METRO 580**
- Walmart
  - KOHL'S
  - SALLY BEAUTY
  - Party City
  - Patelco ENERGY SERVICES
  - SUBWAY

# DIABLO TECHNOLOGY CENTER

*For more information on this property, please contact*

IAN THOMAS  
925.905.1105  
ian.thomas@kiddier.com  
LIC N° 01279455

KIDDER.COM

This information supplied herein is from sources we deem reliable. It is provided without any representation, warranty, or guarantee, expressed or implied as to its accuracy. Prospective Buyer or Tenant should conduct an independent investigation and verification of all matters deemed to be material, including, but not limited to, statements of income and expenses. Consult your attorney, accountant, or other professional advisor.

