

Office | For Lease

CBRE

Chase Tower

CLASS A OFFICE SUITES

707 Virginia Street East
Charleston, WV 25301



CHASE TOWER
707 Virginia Street East
Charleston, WV 25301



Class A Office Space

Located in Charleston's Central Business District

Multiple tenancy high rise tower with banking facility on site.

Amenities:

- Full service
- 24/7 security on site
- Attached parking garage
- Newly renovated common areas
- Outside plaza area for tenant events
- Conference room space available for tenants
- Updated lobby and touch-screen directory
- Easy access to highways I-64, I-77 & I-79
- Breakroom/vending area
- Exercise facility, dressing rooms, and showers
- Full-service bank and travel agency on-site

17

STORIES OF CLASS A OFFICE SPACE

1968

YEAR BUILT

\$22.00

PRICE/SF

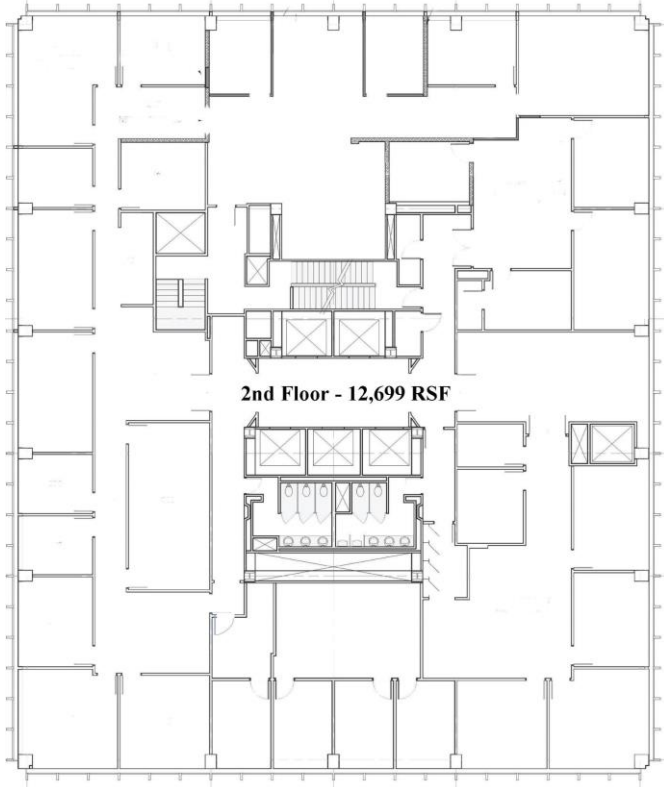
CLASS A OFFICE SUITES AVAILABLE

- 1st Floor - 3,173 RSF
- 2nd Floor- 12,699 RSF
- 8th Floor- 12,635 RSF
- 9th Floor- 5,714 RSF
- 10th Floor- 2,478 RSF
- 11th Floor- 6,692 RSF
- 12th Floor- 3,282 RSF
- 14th Floor- 2,203 RSF

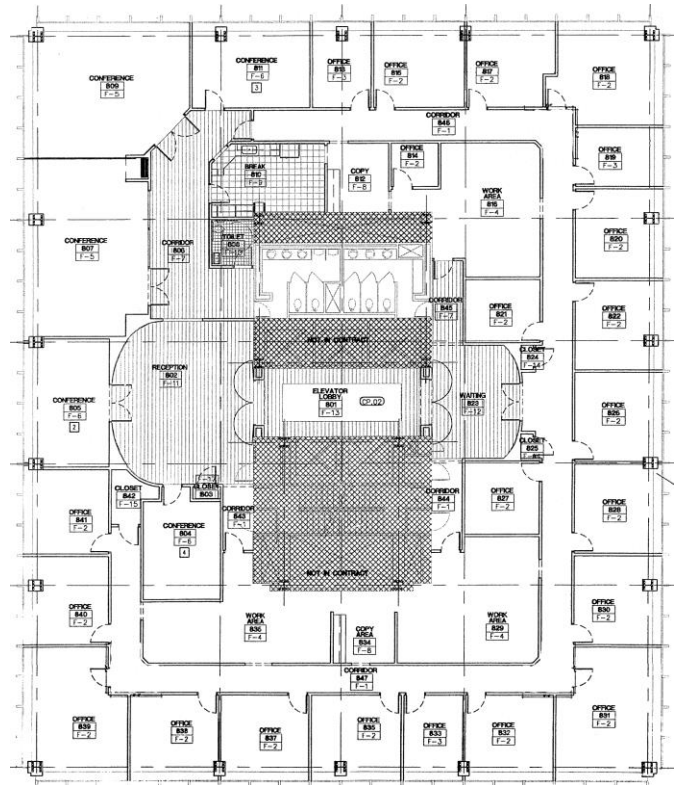
1st Floor



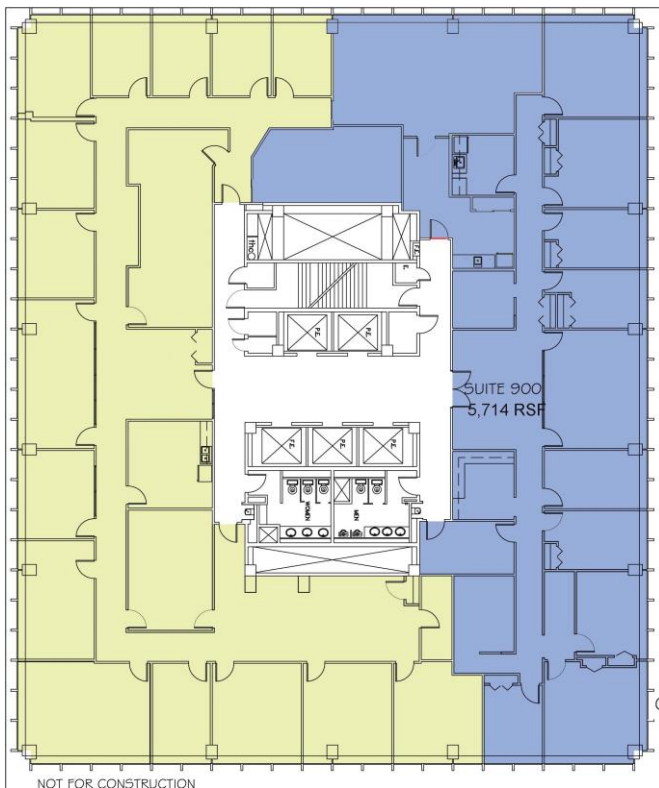
2nd Floor



8th Floor



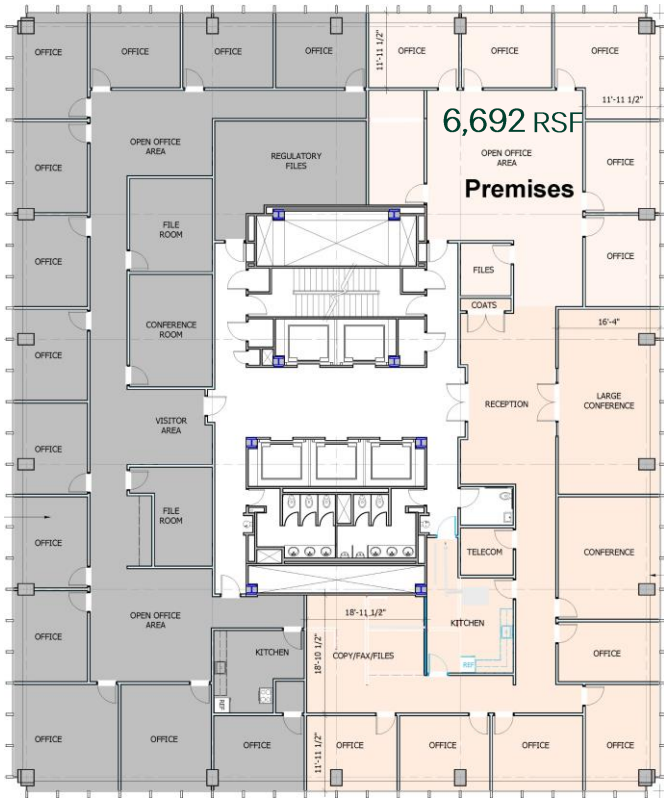
9th Floor



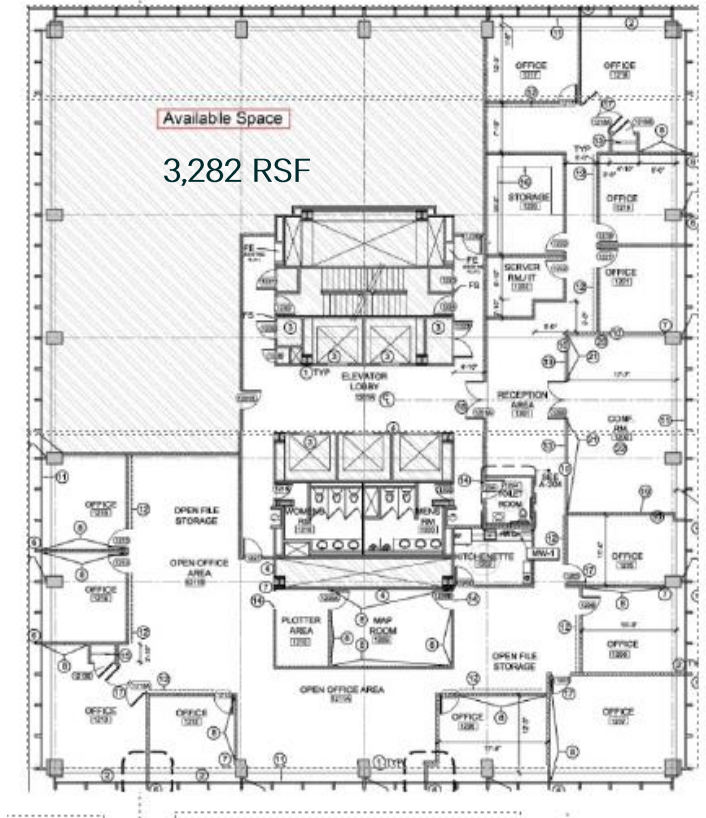
10th Floor



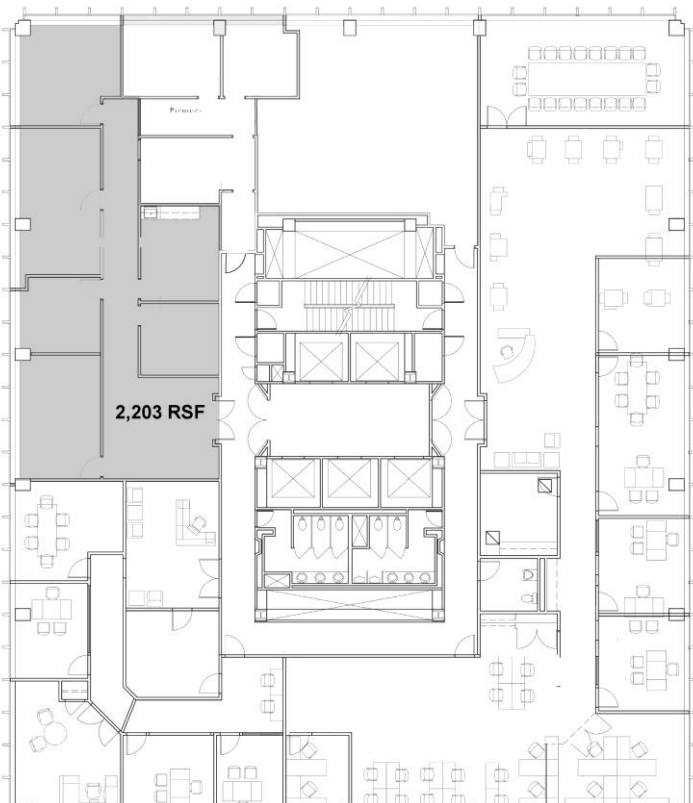
11th Floor



12th Floor



14th Floor



Chase 14th Floor



For Lease



2023 Demographics	One Mile	Three Miles	Five Miles
Population	6,409	43,455	65,714
Households	3,362	19,852	30,066
Average Household Income	\$74,578	\$93,088	\$92,636
Businesses	1,696	2,960	4,152



David Durbin
Broker
707 Virginia St. E.
Charleston, WV 25301
+1 304 720 8497
david.durbin@cbre.com

© 2023 CBRE, Inc. All rights reserved. This information has been obtained from sources believed reliable, but has not been verified for accuracy or completeness. You should conduct a careful, independent investigation of the property and verify all information. Any reliance on this information is solely at your own risk. CBRE and the CBRE logo are service marks of CBRE, Inc. All other marks displayed on this document are the property of their respective owners, and the use of such logos does not imply any affiliation with or endorsement of CBRE. Photos herein are the property of their respective owners. Use of these images without the express written consent of the owner is prohibited.