



**2200 NW 129th Avenue  
Miami, FL 33182**

**22,784 SF**  
**Industrial space**  
**for lease**

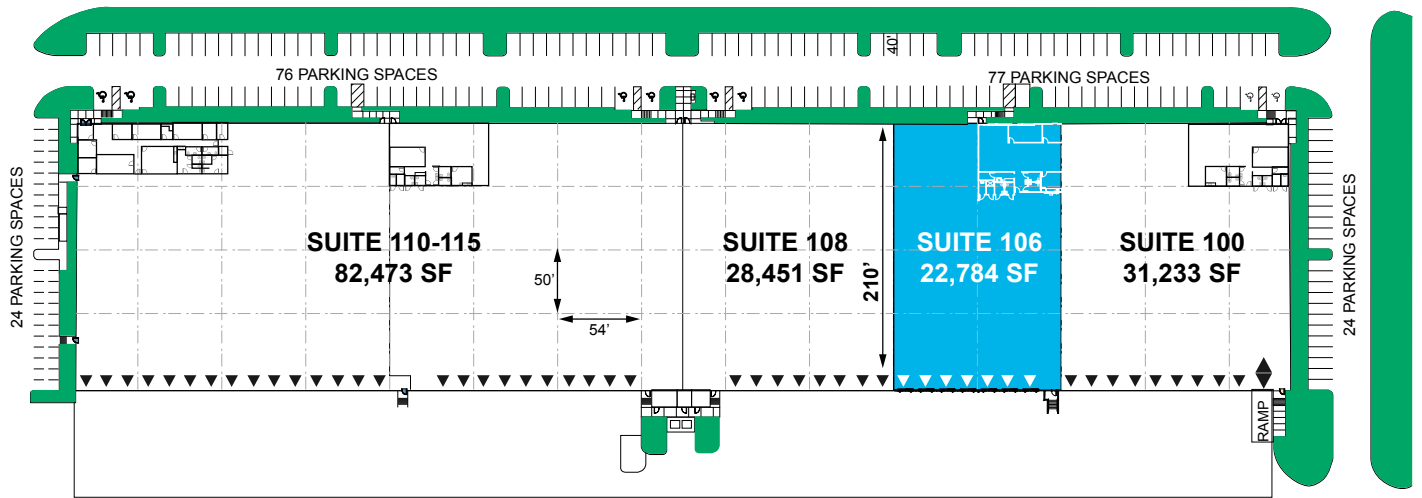
**Available 8/1/2026**

**Building 22, Suite 106**

Available SF	22,784 SF
Office SF	2,274 SF
Clear Height	30'
Column Spacing	54' x 50'
Truck Court Depth	186'
Speed Bay	50'
Dock-High Doors	7
Parking Ratio	1.12 /1,000 SF
Sprinkler	ESFR
Lighting	LED motion sensor

# Site plan

## BEACON LAKES 22 - SUITE 106

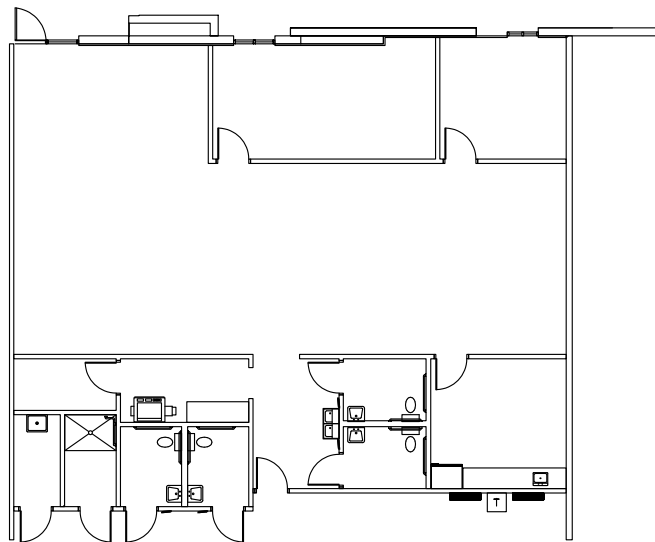


### LEGEND

- ▽ Dock Position
- ◇ Drive-in Door
- Available
- Land



Suite 106  
2,274 SF



**Barbara Mantecon**  
 bmantecon@prologis.com  
 +1 954 316 1777

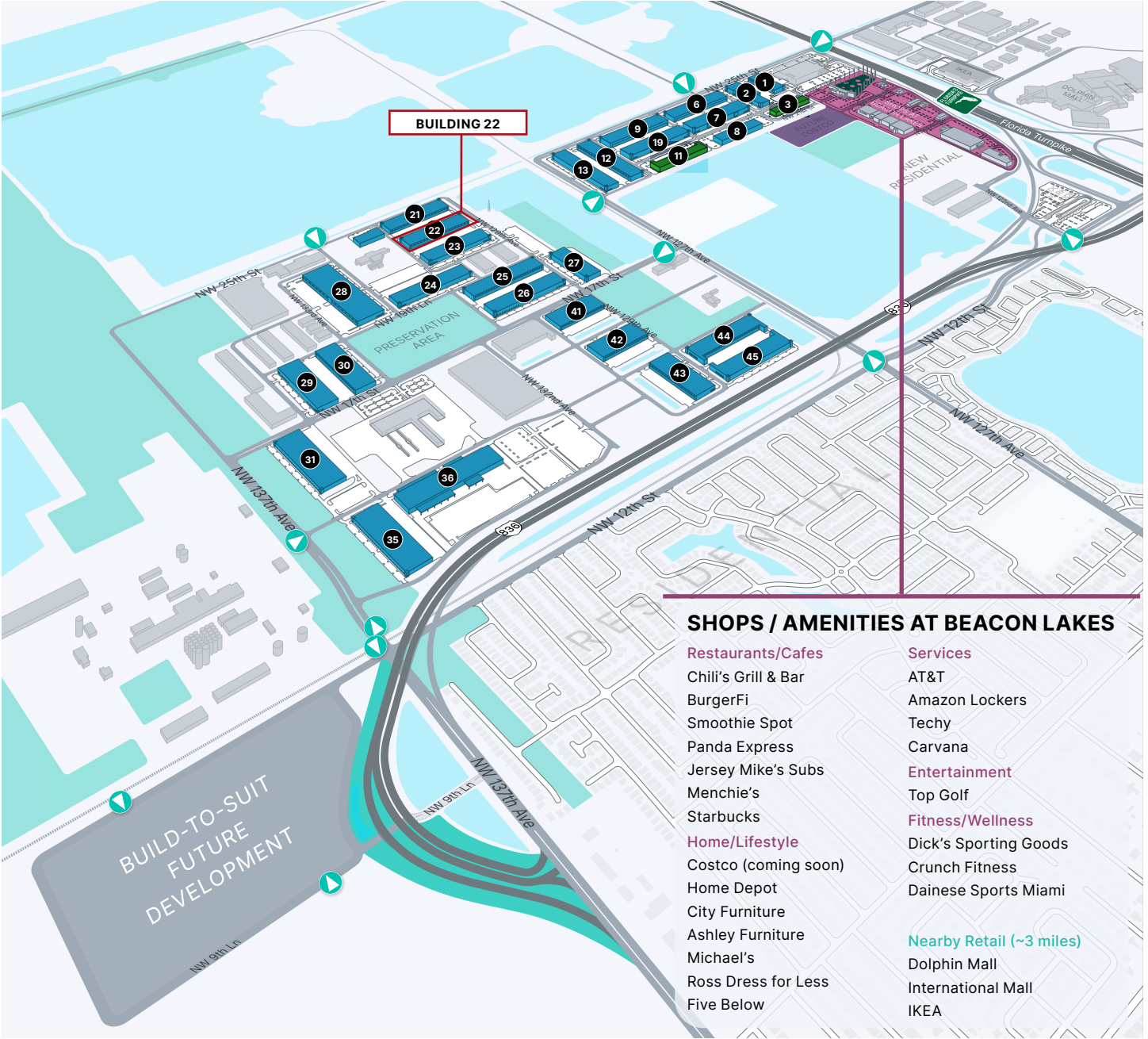


**Brian Smith**  
 smith.brian@jll.com  
 +1 305 960 8403

**Audley Bosch**  
 audley.bosch@jll.com  
 +1 305 960 8404

**Ana Rivera**  
 ana.rivera@jll.com  
 +1 305 960 8427

**Location map**  
**BEACON LAKES 22**



**SHOPS / AMENITIES AT BEACON LAKES**

- Restaurants/Cafes**
  - Chili's Grill & Bar
  - BurgerFi
  - Smoothie Spot
  - Panda Express
  - Jersey Mike's Subs
  - Menchie's
  - Starbucks
- Home/Lifestyle**
  - Costco (coming soon)
  - Home Depot
  - City Furniture
  - Ashley Furniture
  - Michael's
  - Ross Dress for Less
  - Five Below
- Services**
  - AT&T
  - Amazon Lockers
  - Techy
  - Carvana
- Entertainment**
  - Top Golf
- Fitness/Wellness**
  - Dick's Sporting Goods
  - Crunch Fitness
  - Dainese Sports Miami
- Nearby Retail (~3 miles)**
  - Dolphin Mall
  - International Mall
  - IKEA



- LEGEND**
- Beacon Lakes 45
  - Existing Buildings
  - Planned Development
  - Future Build-to-Suit
  - Non-Prologis Tenants
  - ▲ Beacon Lakes Ingress/Egress
  - Shops at Beacon Lakes

