

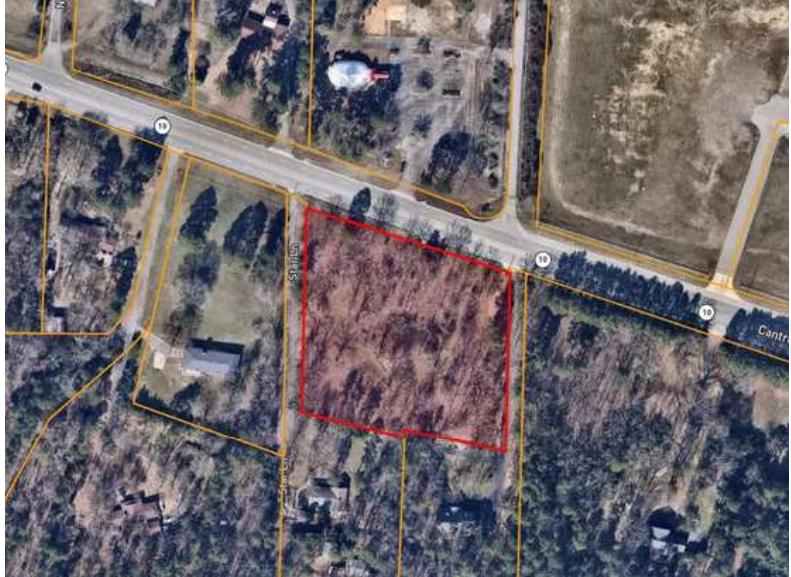
# 18021 CANTRELL ROAD

LITTLE ROCK, AR 72223



**FOR SALE**  
**\$1,900,000**

- **3.12± ACRES**  
(only \$13.98/SF!)
- Commercial potential
- 460' of Cantrell / Hwy 10 frontage
- Labeled as "Transition" on City Master Plan
- Build to suit across from new Bank OZK headquarters
- New stoplight installation



# 18021 CANTRELL ROAD

LITTLE ROCK, AR 72223

72223-1275

