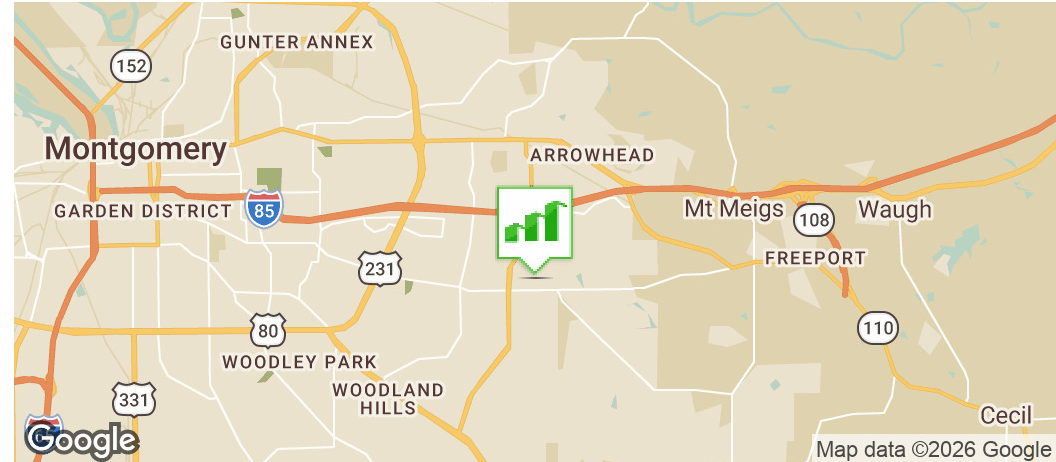


FULTON COURT

7003-7011 FULTON COURT , MONTGOMERY, AL 36109

Executive Summary



OFFERING SUMMARY

Available SF: 2,287 SF

Lease Rate: \$14.00 SF/Yr

Lot Size: ± 0.46 Acres

Year Built: 1999

Building Size: ± 5,492

Zoning: O-1

Price / SF: \$109.07

PROPERTY HIGHLIGHTS

- Multi-Tenant office building
- Zoning: O-1 (Office District)
- Located in East Montgomery- surrounded by professional office buildings
- Convenient to a variety of restaurants, shopping, healthcare and hotels
- Concrete parking lot with ample parking for employees and customers
- ± 0.7 miles from Taylor Road with traffic counts of ±35,730 AADT
- ± 2.0 miles from Eastchase Shopping Center
- ± 2.3 miles from I-85
- ± 10.8 miles from Downtown Montgomery

DEMOGRAPHICS

	1 MILE	3 MILES	5 MILES
Total Households	3,357	20,000	44,077
Total Population	7,371	45,559	103,400
Average HH Income	\$109,062	\$102,397	\$89,217

GENE CODY, CCIM, SIOR

334.386.2441
gcody@mcrrmpm.com

MOORE COMPANY REALTY

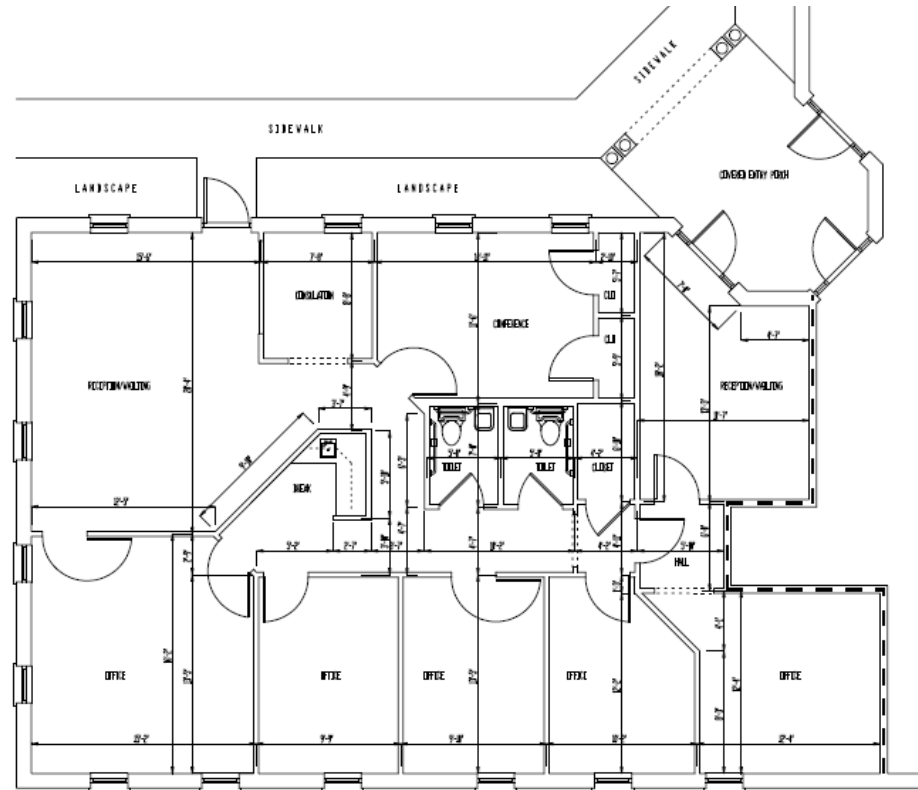
312 Catoma Street, Suite 200, Montgomery, AL 36104
334.262.1958 | moorecompanyrealty.com



FULTON COURT

7003-7011 FULTON COURT , MONTGOMERY, AL 36109

Lease Spaces



AVAILABLE SPACES

SUITE	TENANT	SIZE (SF)	LEASE TYPE	LEASE RATE
7011	Available	2,287 SF	NNN	Negotiable

GENE CODY, CCIM, SIOR

334.386.2441
gcody@mcrmpm.com

MOORE COMPANY REALTY

312 Catoma Street, Suite 200, Montgomery, AL 36104
334.262.1958 | moorecompanyrealty.com



FULTON COURT

7003-7011 FULTON COURT , MONTGOMERY, AL 36109

Retail Map



GENE CODY, CCIM, SIOR

334.386.2441
gcody@mcrmpm.com

MOORE COMPANY REALTY

312 Catoma Street, Suite 200, Montgomery, AL 36104
334.262.1958 | moorecompanyrealty.com

