

FOR SALE

8155 1st Ave S, Seattle, WA



1ST AVE S

Kevin Skillestad
+1 206 715 0757
kevin.skillestad@kbcadvisors.com

John Broom
+1 206 877 2750
john.broom@kbcadvisors.com

KBC Advisors | Seattle
5628 Airport Way, Suite 238
Seattle, WA 98108

FOR SALE

8155 1st Ave S, Seattle, WA



16,796
Square Feet

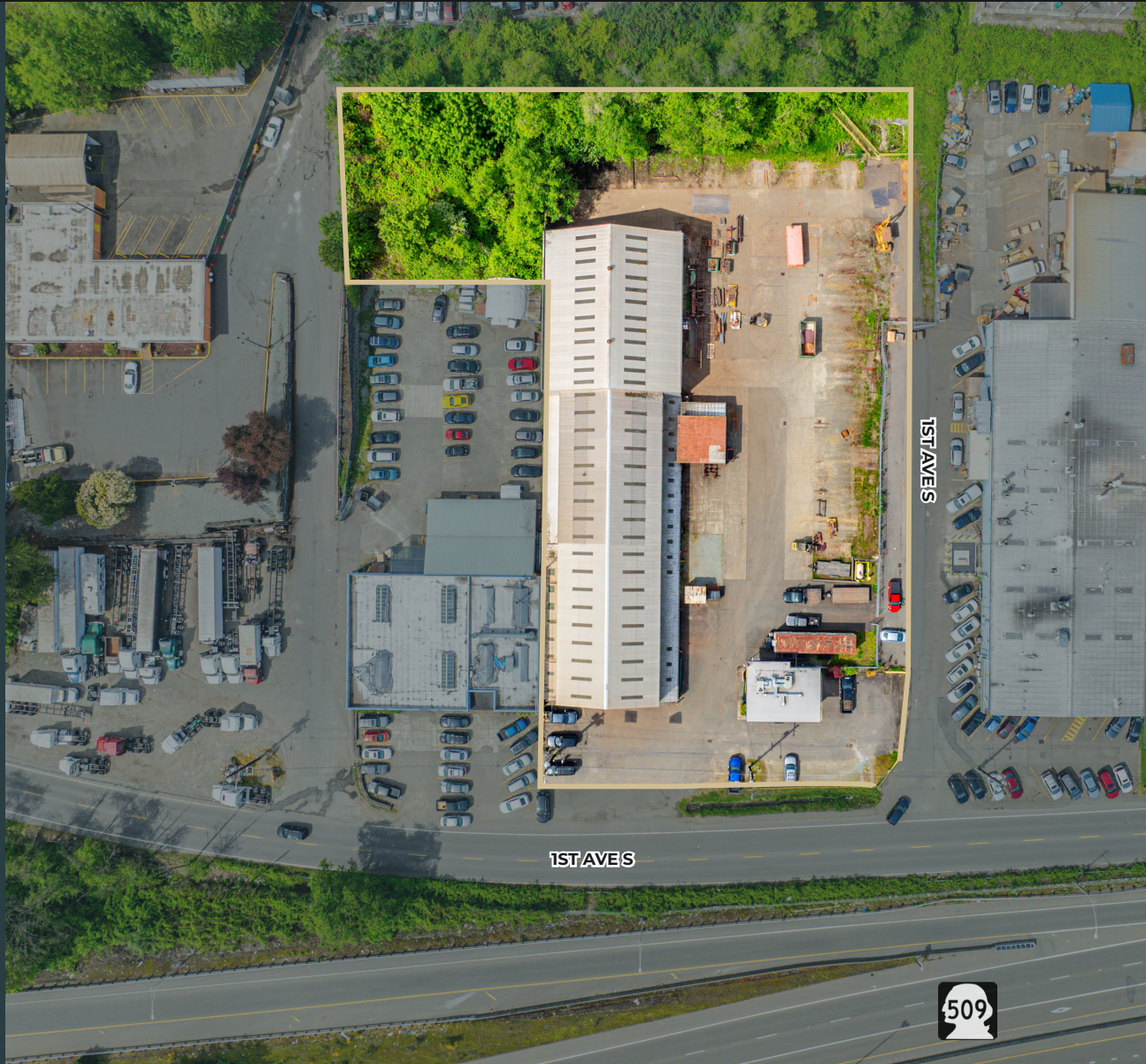
1,572 SF
Two-Story Office

1.38
Useable Acres

3
Grade-level Doors

22'
Clear Height

27.91%
Site Coverage
(useable)



TWO 5-TON
Bridge Cranes

ONE 10-TON
Bridge Crane

LIGHTING
Upgraded

MML U/85
Zoning

HEAVY POWER
480 Volt, 3-Phase

METAL PREFAB
Steel Construction

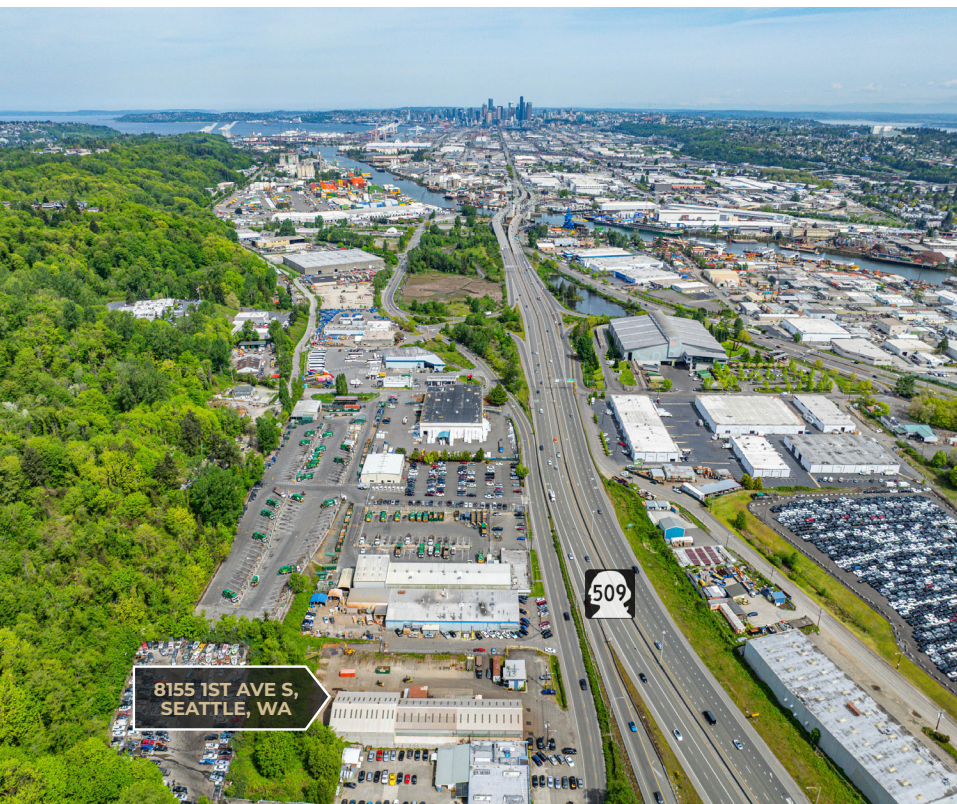
Kevin Skillestad
+1 206 715 0757
kevin.skillestad@kbcadvisors.com

John Broom
+1 206 877 2750
john.broom@kbcadvisors.com

KBC Advisors | Seattle
5628 Airport Way, Suite 238
Seattle, WA 98108

FOR SALE

8155 1st Ave S, Seattle, WA



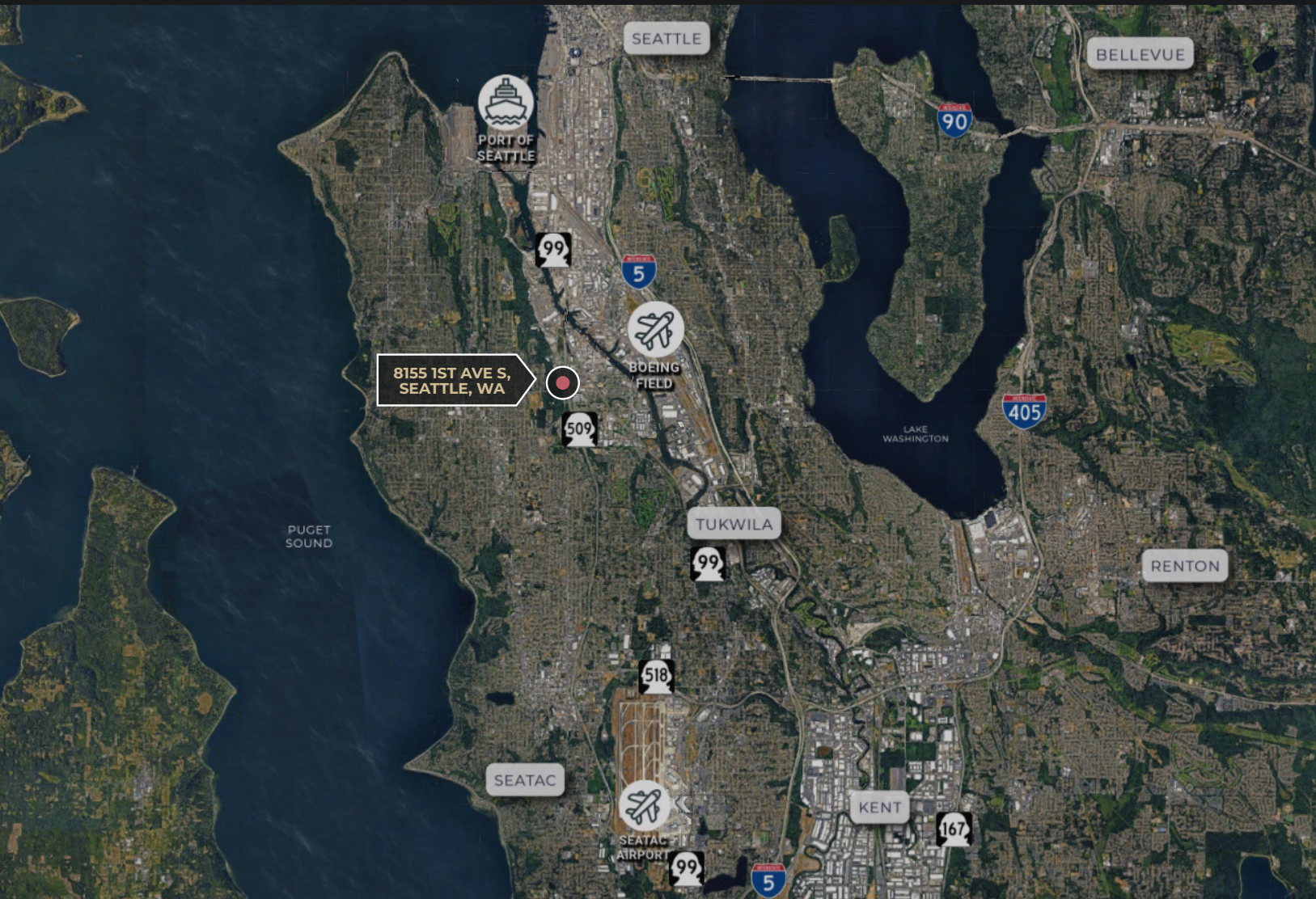
Kevin Skillestad
+1 206 715 0757
kevin.skillestad@kbcadvisors.com

John Broom
+1 206 877 2750
john.broom@kbcadvisors.com

KBC Advisors | Seattle
5628 Airport Way, Suite 238
Seattle, WA 98108

FOR SALE

8155 1st Ave S, Seattle, WA



1
Minute to SR-509

10
Minutes to Port of Seattle

10
Minutes to SeaTac International Airport

14
Minutes to Boeing Field

15
Minutes to I-5

Kevin Skillestad

+1 206 715 0757

kevin.skillestad@kbcadvisors.com

John Broom

+1 206 877 2750

john.broom@kbcadvisors.com

KBC Advisors | Seattle

5628 Airport Way, Suite 238

Seattle, WA 98108

KBCADVISORS.COM

© 2026 KBC ADVISORS This information has been obtained from sources believed to be reliable but has not been verified for accuracy or completeness, and KBC Advisors disclaims any guarantees, warranties or representations, express or implied, as to the completeness or accuracy as to the information contained herein. You should conduct a careful, independent investigation of the property and verify all information. Any reliance on this information is solely at your own risk. The KBC ADVISORS logo is a service mark of KBC ADVISORS. All other marks displayed on this document are the property of their respective owners. Photos herein are the property of their respective owners. Use of these images without the express written consent of the owners is prohibited.