

HELMSLEY SPEAR

*Established 1866*



**9 29<sup>th</sup> STREET**  
BROOKLYN, NY 11232

3.5 ACRES

# HELM斯LEY SPEAR

*Established 1866*

THE OPPORTUNITY  
9 29<sup>TH</sup> STREET  
BROOKLYN, NY 11232

Sunset Park, Brooklyn

Fresh Direct Cross Dock Sublease  
Food distribution with Refrigerated Storage

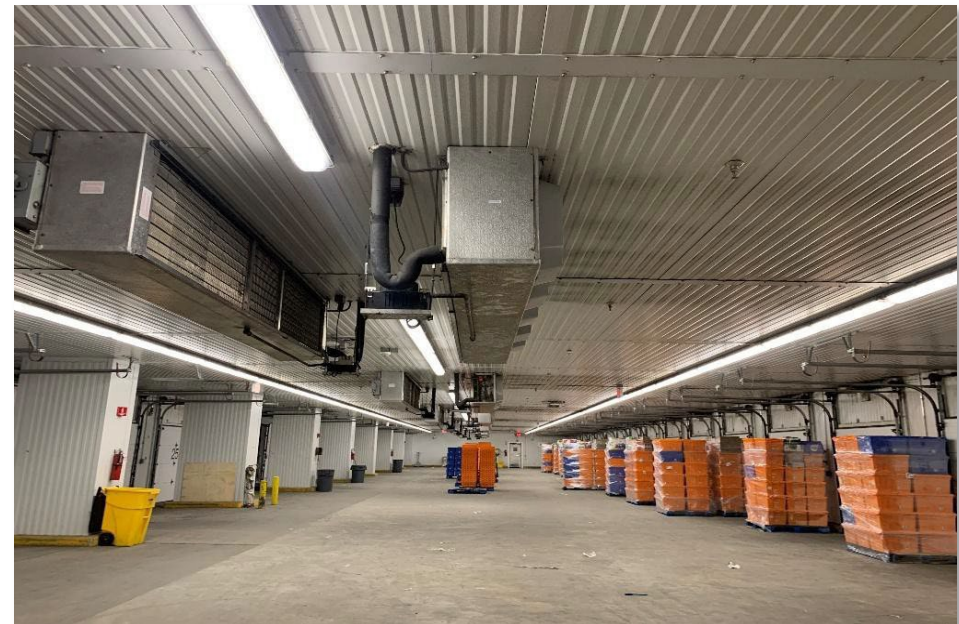
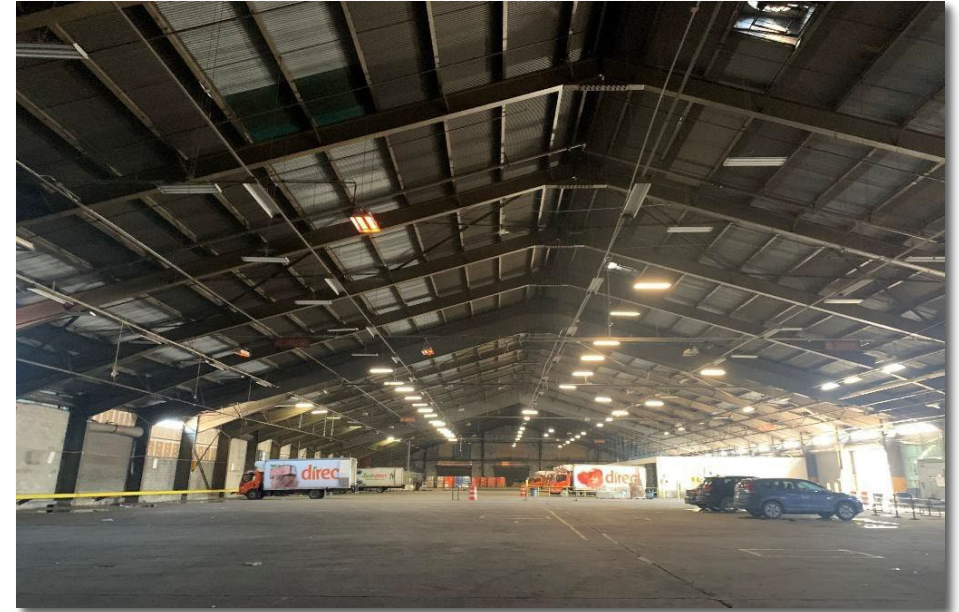
## Specifications

77,282 SF Warehouse  
3,303 SF Office  
**80,585 Total**

36 Loading Docks (18 Exterior, 18 interior), 4 Drive-In Doors

## Term:

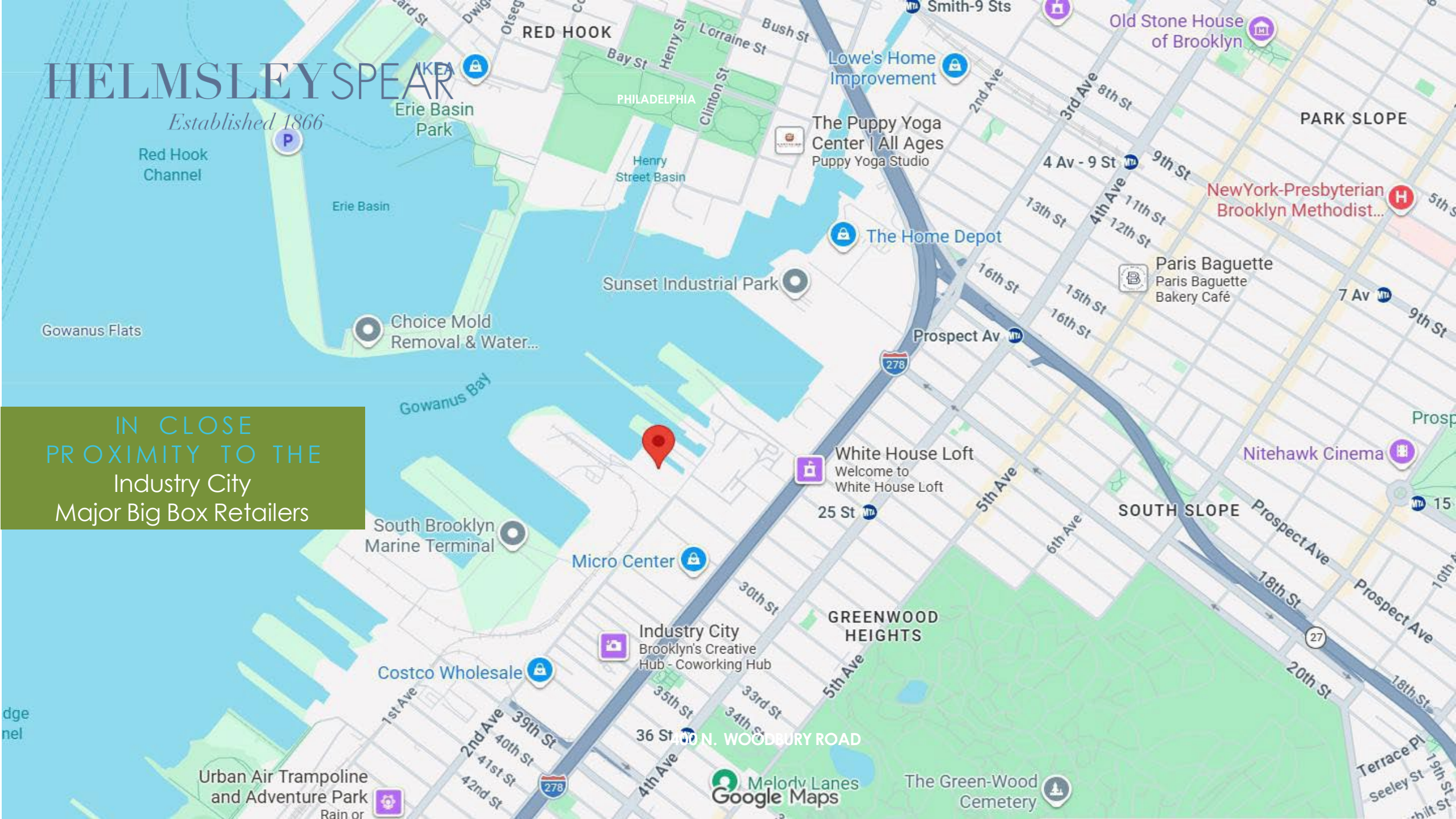
Through June 30, 2029



# HELMSLEY SPEAR

Established 1866

IN CLOSE PROXIMITY TO THE Industry City Major Big Box Retailers



# HELMSLEY SPEAR

*Established 1866*

## TRANSPORTATION

9 29TH STREET  
BROOKLYN, NY 11232

### Transit/Subway

25 Street (D - New York MTA Subway (The Subway), M - New York MTA Subway (The Subway), N - New York MTA Subway (The Subway), R - New York MTA Subway (The Subway))

Drive	Walk	Distance
2 min	11 min	0.5 mi

36 Street (D,M,N,R Line) (D - New York MTA Subway (The Subway), M - New York MTA Subway (The Subway), N - New York MTA Subway (The Subway), R - New York MTA Subway (The Subway))

Drive	Walk	Distance
3 min	13 min	0.7 mi

Prospect Avenue (D,M,N,R Line) (D - New York MTA Subway (The Subway), M - New York MTA Subway (The Subway), N - New York MTA Subway (The Subway), R - New York MTA Subway (The Subway))

Drive	Walk	Distance
3 min	19 min	1.0 mi

### Airport:

	Drive	Distance
Laguardia	26 minutes	13.5 miles
JFK	28 minutes	15.1 miles
Newark Liberty	30 minutes	17.0 miles

3.5 ACRES

AVAILABLE



# HELMSLEY SPEAR

*Established 1866*

**9 29TH STREET  
BROOKLYN, NY 11232**

County: Kings  
Parcel ID: 0662-001  
Block: 662  
Lot: 1  
Municipality: Brooklyn  
Property Class: B  
Zoning: M3 - 1  
Acreage: 3.5  
Building Type: 3 Star Distribution  
Ceiling height: 20' to 48'  
Land SF: 152,460 SF



# HELMSLEY SPEAR

*Established 1866*

**9 29<sup>TH</sup> STREET  
BROOKLYN, NY 11232**

For more information, please contact:

**ERIC LASSOFF**

O: 212.508.7442 M: 917.776.5909  
[elassoff@helmsleyspear.com](mailto:elassoff@helmsleyspear.com)

**RANDY SHERMAN**

O: 212.938.6629 M: 914.772.0055  
[rsherman@helmsleyspear.com](mailto:rsherman@helmsleyspear.com)

**ALAN WEISMAN**

O: 212.938.6615 M: 917.991.1900  
[aweisman@helmsleyspear.com](mailto:aweisman@helmsleyspear.com)

Federal, State and Local Fair Housing and Anti-Discrimination Laws protect individuals from housing discrimination. Select here to learn more about your rights.

Although information contained herein has been obtained from sources deemed reliable, neither Helmsley Spear nor any of its clients makes any guarantees or representations, express or implied, as to the completeness or accuracy of such information. Any projections, opinions, assumptions or estimates used are for example only. Neither Helmsley Spear nor any of its clients accepts any liability for loss resulting from reliance on such information. There may be material differences between projected results and actual results. Any property offered for sale or lease may be withdrawn without notice. If the recipient of this information has signed a confidentiality agreement regarding this matter, this information is subject to the terms of that agreement.