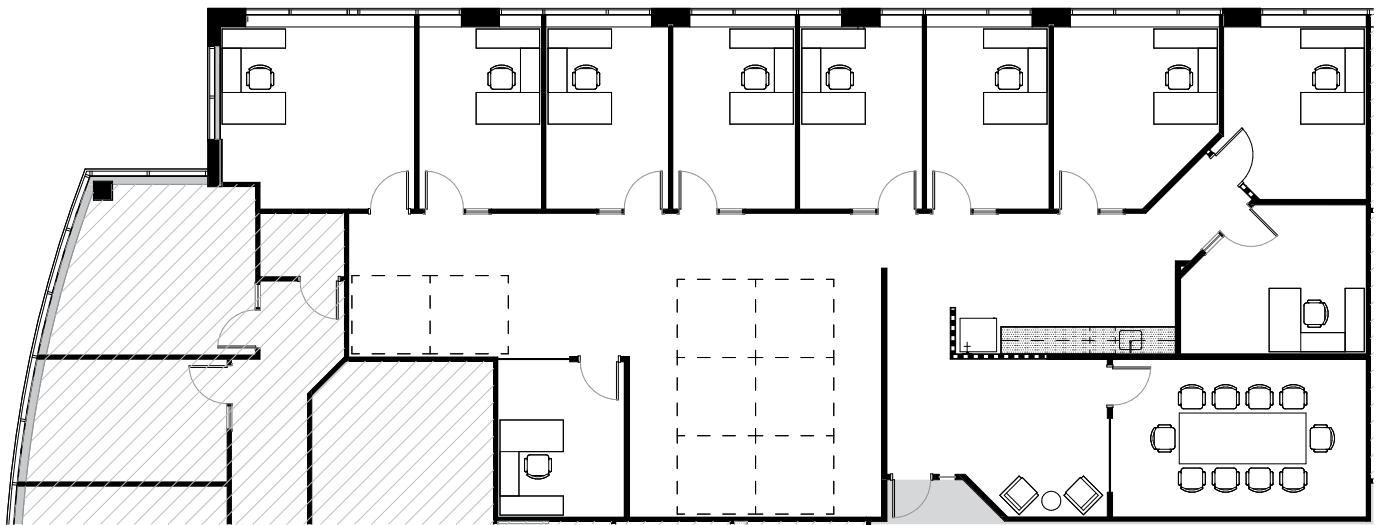


THE POINT INVERNESS

Proposed Spec Suite 240 //
3,696 RSF



8310 SOUTH VALLEY HIGHWAY

ENGLEWOOD, CO

Jamie Gard

VICE CHAIRMAN
TEL. 303-260-4341
JAMIE.GARD@NMRK.COM

Whitney Hake

SENIOR MANAGING DIRECTOR
TEL. 303-260-4202
WHITNEY.HAKE@NMRK.COM

Grace Lessard

ASSOCIATE DIRECTOR
TEL. 303-260-4210
GRACE.LESSARD@NMRK.COM

NEWMARK