

# 1122 S. Robertson Blvd

Los Angeles, CA 90035

OFFICE SPACE FOR LEASE IN THE HEART OF PICO ROBERTSON



COMMERCIAL  
ASSET GROUP

**Adam Funk**

Managing Director

310.666.0124

afunk@cagre.com

Lic. 02129715

# PROPERTY HIGHLIGHTS

1122

## **RENTAL RATE**

SUITE 6: \$1,400/MO (1ST FLOOR)  
SUITE 18: \$1,550/MO (2ND FLOOR)

## **TERM**

NEGOTIABLE

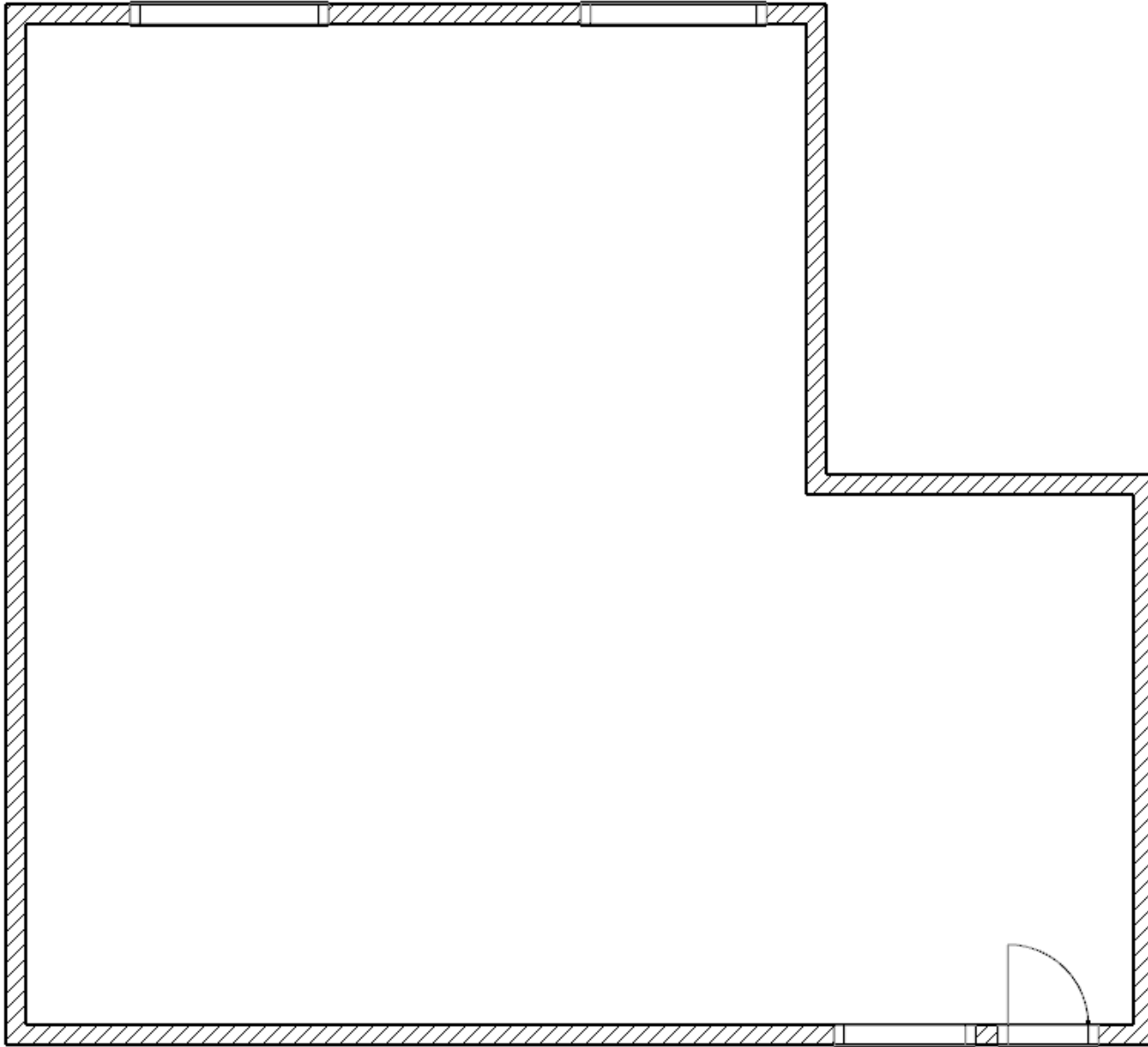
## **PARKING**

SUITE 18: 1 SPACE INCLUDED  
(SUITE 6 DOES NOT INCLUDE PARKING)

---

1122 S Robertson Blvd is a charming Mid-Century building with an exterior courtyard, featuring tasteful landscaping. The building is secured and is accessible 24/7 to tenants. It also has a state-of-the-art intercom system that is compatible with any smart device. This allows for tenants to give remote entry to vendors and clients. All units have central A/C and heat controlled via a shared thermostat. The building has two women's and two men's restrooms that are shared between the tenants.

# SUITE 18 FLOOR PLAN: ±380 RSF

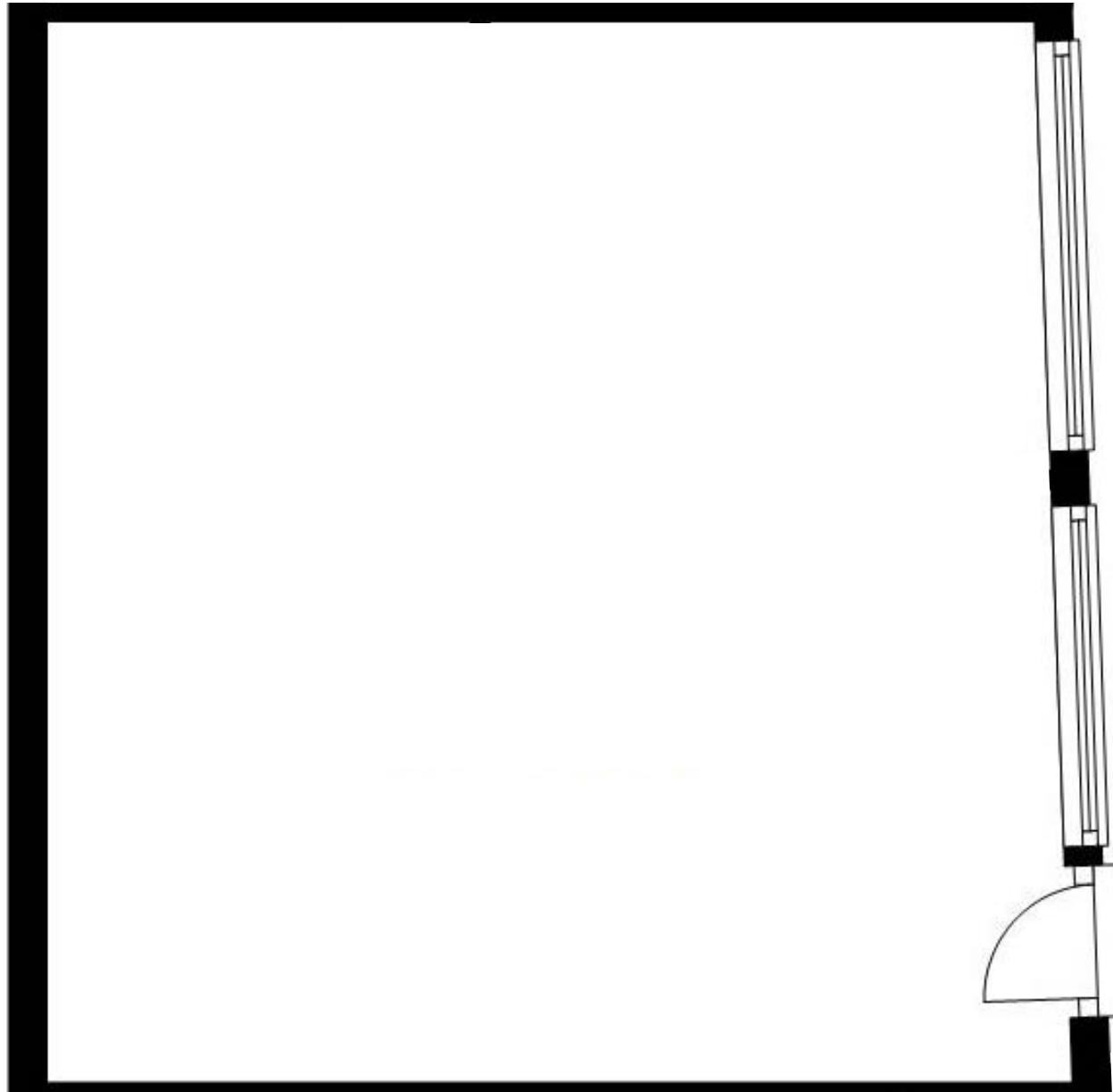


# SUITE 18 PHOTOS



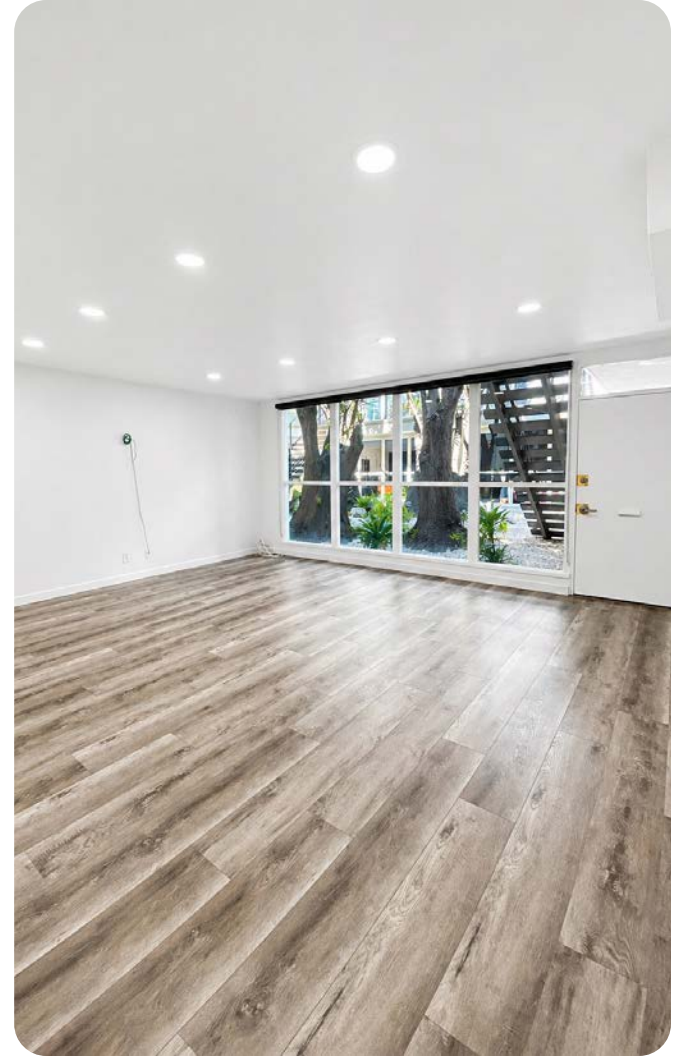
# SUITE 6 FLOOR PLAN

---



# SUITE 6 PHOTOS

---



# AERIAL





**Adam Funk**  
Managing Director  
310.666.0124  
afunk@cagre.com  
Lic. 02129715



**COMMERCIAL  
ASSET GROUP**

**Commercial Asset Group**  
190 N. Canon Drive, STE 300  
Beverly Hills, CA 90210  
P: 310.275.8222 F: 310.275.8223  
www.cagre.com Lic. 01876070

These materials are based on information and content provided by others, which we believe are accurate. No guarantee, warranty or representation is made by Commercial Asset Group, Inc. or its personnel. All interested parties must independently verify accuracy and completeness. As well, any projections, assumptions, opinion, or estimates are used for example only and do not represent the current or future performance of the identified property. Your tax, financial, legal and toxic substance advisors should conduct a careful investigation of the property and its suitability for your needs, including land use limitations. The property is subject to prior lease, sale, change in price, or withdrawal from the market without notice.