

23800 ORCHARD LAKE ROAD
FARMINGTON HILLS, MICHIGAN

OFFICE FOR SALE OR LEASE
599-3,007 Square Feet Available



**SIGNATURE
ASSOCIATES**
KNOW SIGNATURE | KNOW RESULTS

THE COPPER BUILDING



PROPERTY FEATURES

- Just minutes from I-696 and Corewell Health Farmington Hills Hospital
- 599-3,007 square feet available for lease
- Also available for sale
- Recently renovated, turn-key, highly desirable property
- Ideal for medical, office users, or an owner-occupant looking to invest and operate under one roof
- On-site pharmacy
- The modern lobby, common areas, and abundant parking
- Prime Orchard Lake Road address with monument signage
- Sale Price: \$4,800,000
- Lease Rate: \$18.00/sq. ft. G+U



For more information, please contact:

STEVE GORDON
(248) 948 0101
sgordon@signatureassociates.com

JEFF HIGGINS
(248) 359 0650
jhiggins@signatureassociates.com

SIGNATURE ASSOCIATES
One Towne Square, Suite 1200
Southfield, MI 48076
www.signatureassociates.com

23800 Orchard Lake Rd – Farmington Hills, Michigan

Office For Sale or Lease

599 – 3,007
Square Feet
AVAILABLE



For more information, please contact:

STEVE GORDON
(248) 948 0101
sgordon@signatureassociates.com

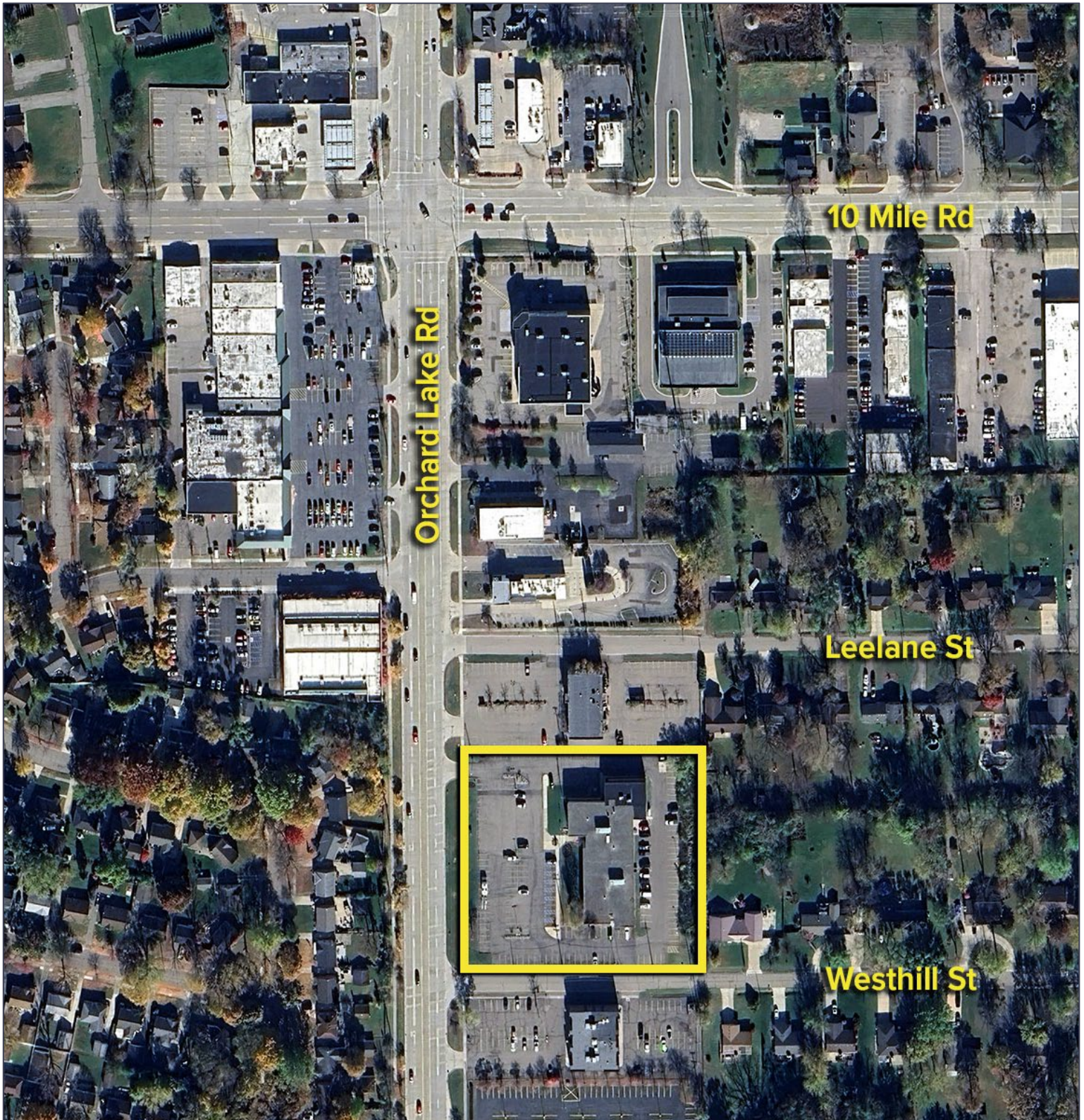
JEFF HIGGINS
(248) 359 0650
jhiggins@signatureassociates.com

SIGNATURE ASSOCIATES
One Towne Square, Suite 1200
Southfield, MI 48076
www.signatureassociates.com

23800 Orchard Lake Rd – Farmington Hills, Michigan

Office For Sale or Lease

599 – 3,007
Square Feet
AVAILABLE



For more information, please contact:

STEVE GORDON
(248) 948 0101
sgordon@signatureassociates.com

JEFF HIGGINS
(248) 359 0650
jhiggins@signatureassociates.com

SIGNATURE ASSOCIATES
One Towne Square, Suite 1200
Southfield, MI 48076
www.signatureassociates.com