



Broadway Centre

100 W BROADWAY AVE. BISMARCK, ND

Office for Lease

CBRE

Office Space

100 W BROADWAY AVE. BISMARCK, ND

Broadway Centre, located at 100 W Broadway Avenue in downtown Bismarck, offers 13,516 square feet of office space across five suites. The property offer's sufficient parking, as well as elevator access and well-maintained common restrooms. Positioned within the city's core business district, Broadway Centre delivers excellent walkability to a wide range of dining, retail, and professional services. This central location, combined with practical amenities, makes Broadway Centre an ideal choice for businesses seeking convenience and a strong downtown presence.

Address	100 W Broadway Ave Bismarck, ND
Offering Rate	\$25 PSF (Mod Gross)
Term	Flexible Options Available
Year Built	2013
Zoning	Downtown Fringe
Available Square Feet	13,516 SF
Other	Elevators
	Communal Restrooms
	On Site Restaurant
	Garage Spaces Available
	Tax Credits Available
	Walkable Enviroment of CBD



1st floor



Turn Key Restaurant

Address	100 W Broadway Ave Bismarck, ND
Lease Rate	\$25 PSF Mod Gross
Sale Price	Contact for Pricing & Financials
Term	Flexible
Year Built	2013
Zoning	Downtown Fringe
Available Square Feet	6,000 SF

Turn-key restaurant with equipment

Reserved restaurant parking

Event space

High-end finishes

Outdoor patio

See Brochure

2nd floor


The second floor of Broadway Centre features five available suites. The remaining suites provide clean, customizable spaces suitable for a wide range of business needs. Tenants benefit from elevator access, communal restrooms, and convenient parking options. With an initial lease rate of \$25 PSF, Broadway Centre offers a prime opportunity for businesses seeking a central location in Bismarck's downtown corridor.

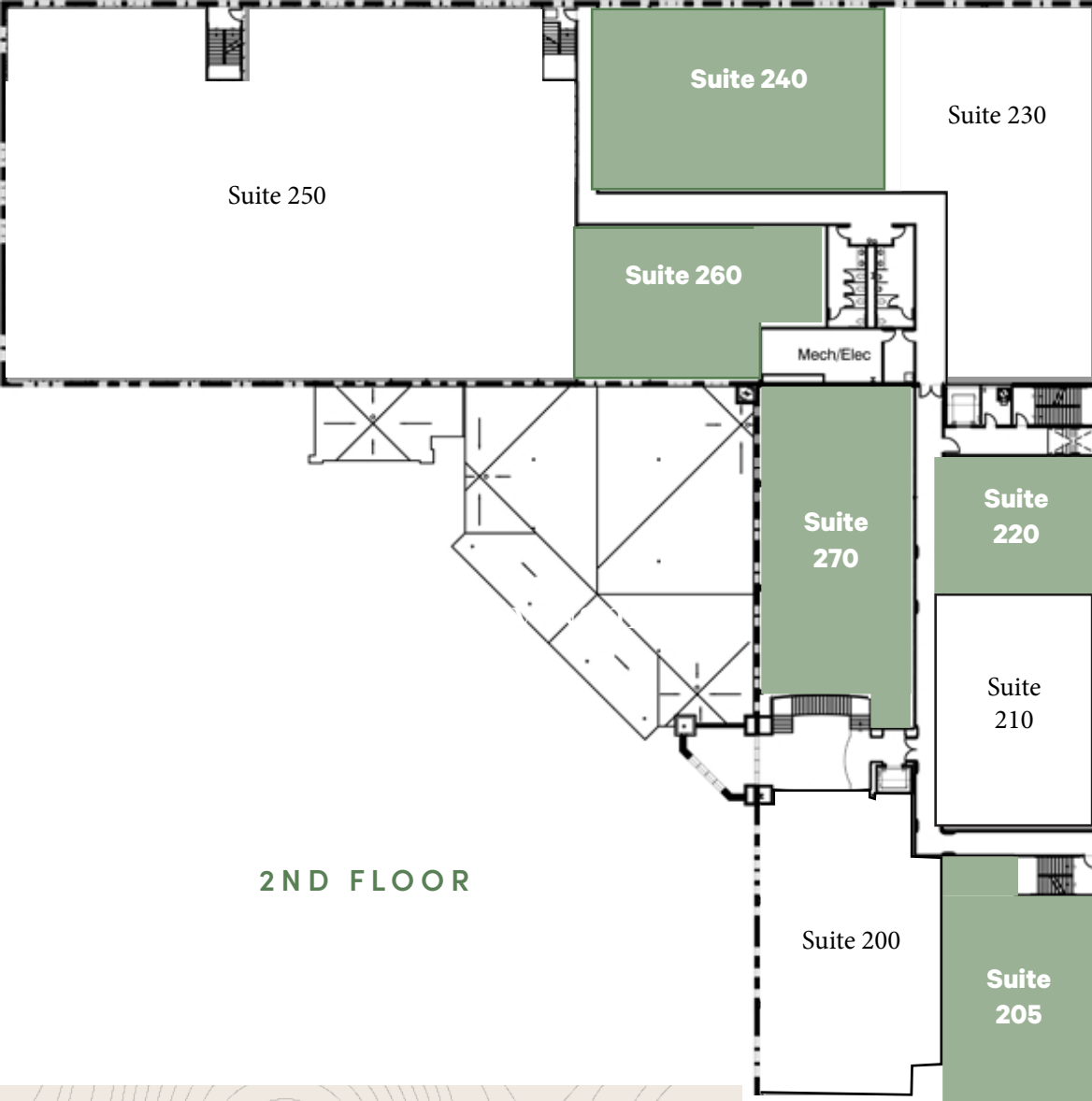
 2,496 SF
Suite 205

 3,658 SF
Suite 240

 1,483 SF
Suite 220

 2,597 SF
Suite 260

 3,282 SF
Suite 270



★ Location Overview

The map shows the Missouri River flowing through Bismarck, ND. Major roads include Interstate 94, W Interstate Ave, W Turnpike Ave, W Divide Ave, E Divide Ave, N 4th St, N 3rd St, N Washington St, S 3rd St, and S 4th St. A star icon on the map indicates the location of the Broadway Centre, situated near the intersection of N Washington St and S 3rd St.

Business logos shown in callout boxes include:

- Top Left:** Bismarck State College (BYC), Hampton by Hilton, Texas Ranchhouse.
- Bottom Left:** Dakota Zoo, Natural Grocers, and a golf course logo.
- Center:** Blarney Stone, JL Beers, DQ, Peacock Alley American Grill & Bar, and noodlezip.
- Top Right:** State Historical Society of North Dakota, Subway, and Sanford Health.
- Bottom Right:** CVS, Scheels, McDonald's, Target, and JCPenney.

Potential Build Out



Suites 205, 220, 240, 260, 270





Broadway Centre

100 W BROADWAY AVE BISMARCK, ND

CONTACTS

KYLE FERDERER

Senior Vice President

+1 612 709 7950

kyle.ferderer@cbre.com

CHANCE LINDSEY

Senior Vice President

+1 701 660 3500

chance.lindsey@cbre.com

© 2026 CBRE, Inc. All rights reserved. This information has been obtained from sources believed reliable but has not been verified for accuracy or completeness. CBRE, Inc. makes no guarantee, representation or warranty and accepts no responsibility or liability as to the accuracy, completeness, or reliability of the information contained herein. You should conduct a careful, independent investigation of the property and verify all information. Any reliance on this information is solely at your own risk. CBRE and the CBRE logo are service marks of CBRE, Inc. All other marks displayed on this document are the property of their respective owners, and the use of such marks does not imply any affiliation with or endorsement of CBRE. Photos herein are the property of their respective owners. Use of these images without the express written consent of the owner is prohibited.

CBRE