

RALEIGH, NC



FOR LEASE

EAST END

MARKET





WELCOME TO THE MARKET

East End Market in Raleigh, North Carolina, is a vibrant mixed-use community that combines **shopping, dining, and office spaces**. It features local shops, restaurants, and craft beverage spots, creating a lively destination for visitors and businesses alike. The property offers modern office spaces in a prime location, surrounded by amenities. With live events and outdoor gatherings, East End Market brings people together, making it a perfect place for work and leisure.

WORK. PLAY. BE. LIVE. WORK. PLAY. BE. LIVE. WORK. PLAY.

MASTER PLAN

East End Market is being developed in two phases. Phase I features 88,000 square feet of adaptive reuse space, **now leasing for food & beverage, retail, and office tenants**. Phase II, set to break ground in **2027**, will include a 227,000-square-foot office building, 27,000 square feet of retail space, and 468 residential units.



PHASE II

227K SF OFFICE - 27K SF RETAIL -
468 RESIDENTIAL UNITS

PHASE I -

PROGRESS CT
70K SF ADAPTIVE REUSE
OFFICE/RETAIL

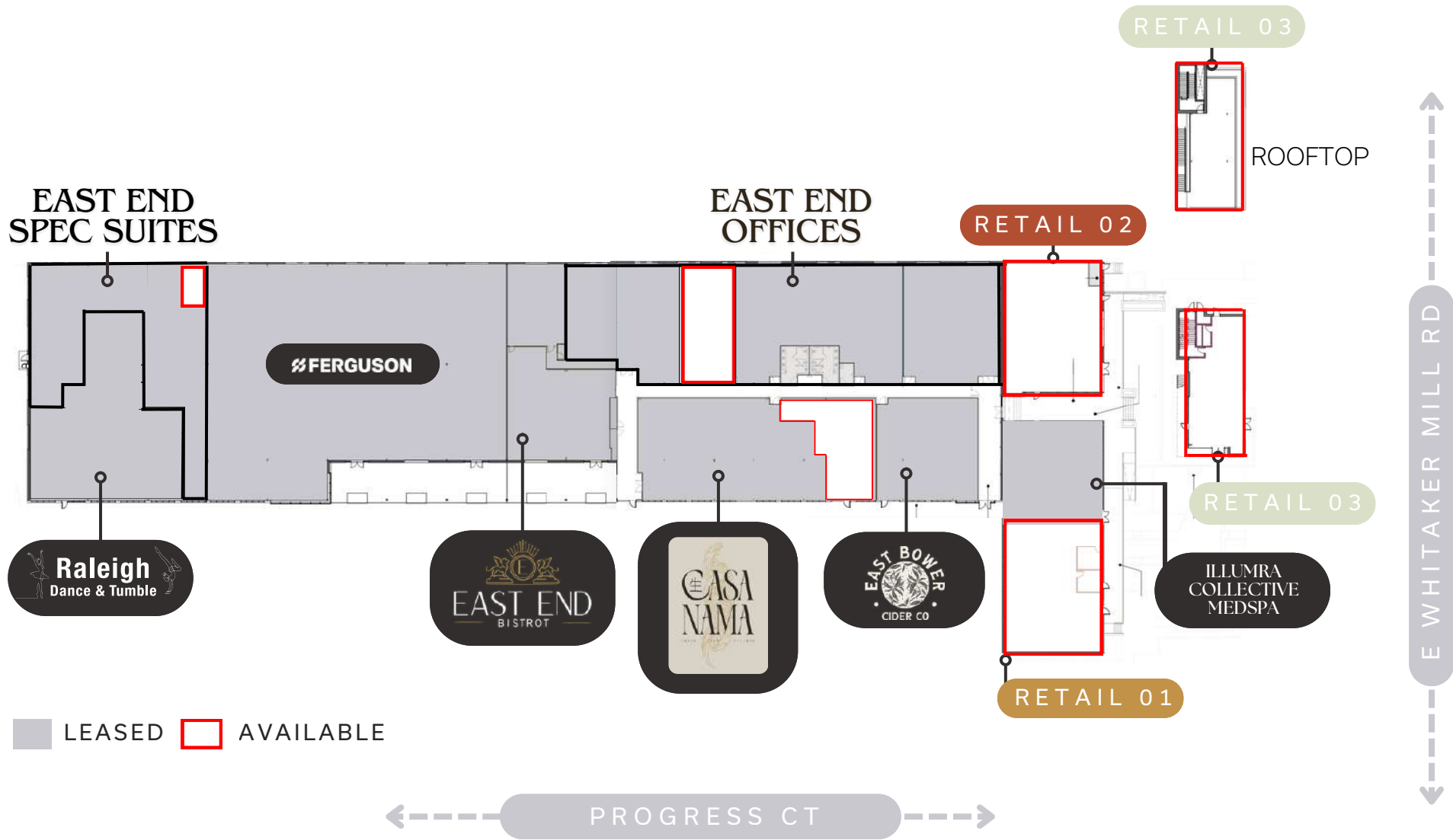
PHASE I -

E WHITAKER
MILL RD

18K SF ADAPTIVE REUSE
OFFICE/RETAIL

EXPLORE THE MARKET





SITE PLAN



EAST END SPEC SUITES

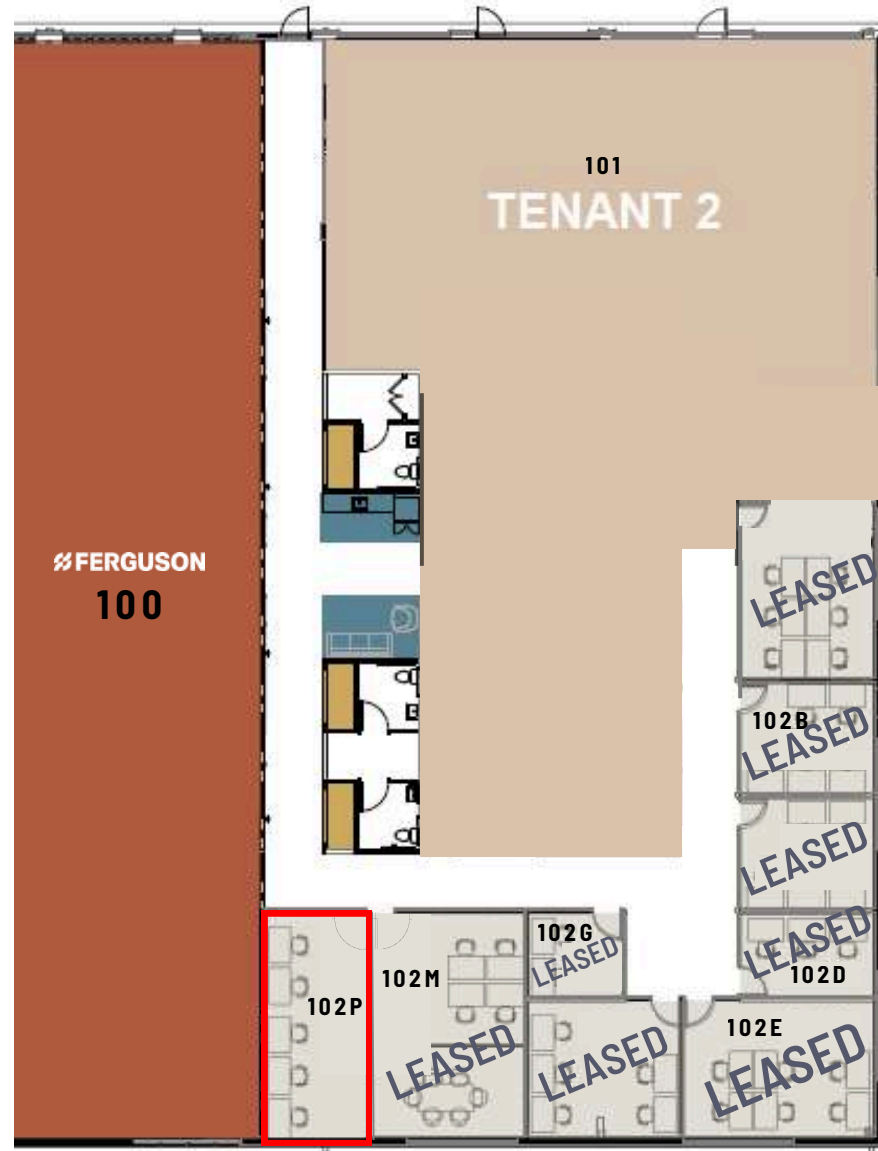
FULLY FURNISHED
PRIVATE SUITES

SUITE 102P - \$2,500/MO

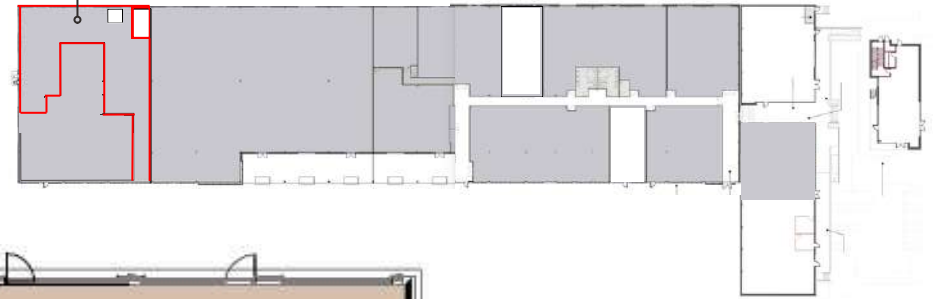
MINIMUM 12-MONTH LEASE

AMENITIES INCLUDE:

- CONFERENCE ROOM
- LOUNGE AREA
- CHAT ROOMS
- KITCHENETTE WITH ESPRESSO BAR
- SECURE WIFI



EAST END
SPEC SUITES



ROOFTOP



SPEC SUITES



EAST END OFFICES

FULLY FURNISHED
PRIVATE OFFICES

SUITE 130D- 780 SF
\$3,750/MO

AMENITIES INCLUDE:

- MODERN OFFICE SPACE
- PRIVATE CONFERENCE ROOM
- KITCHENETTE WITH ESPRESSO BAR
- SECURE WIFI





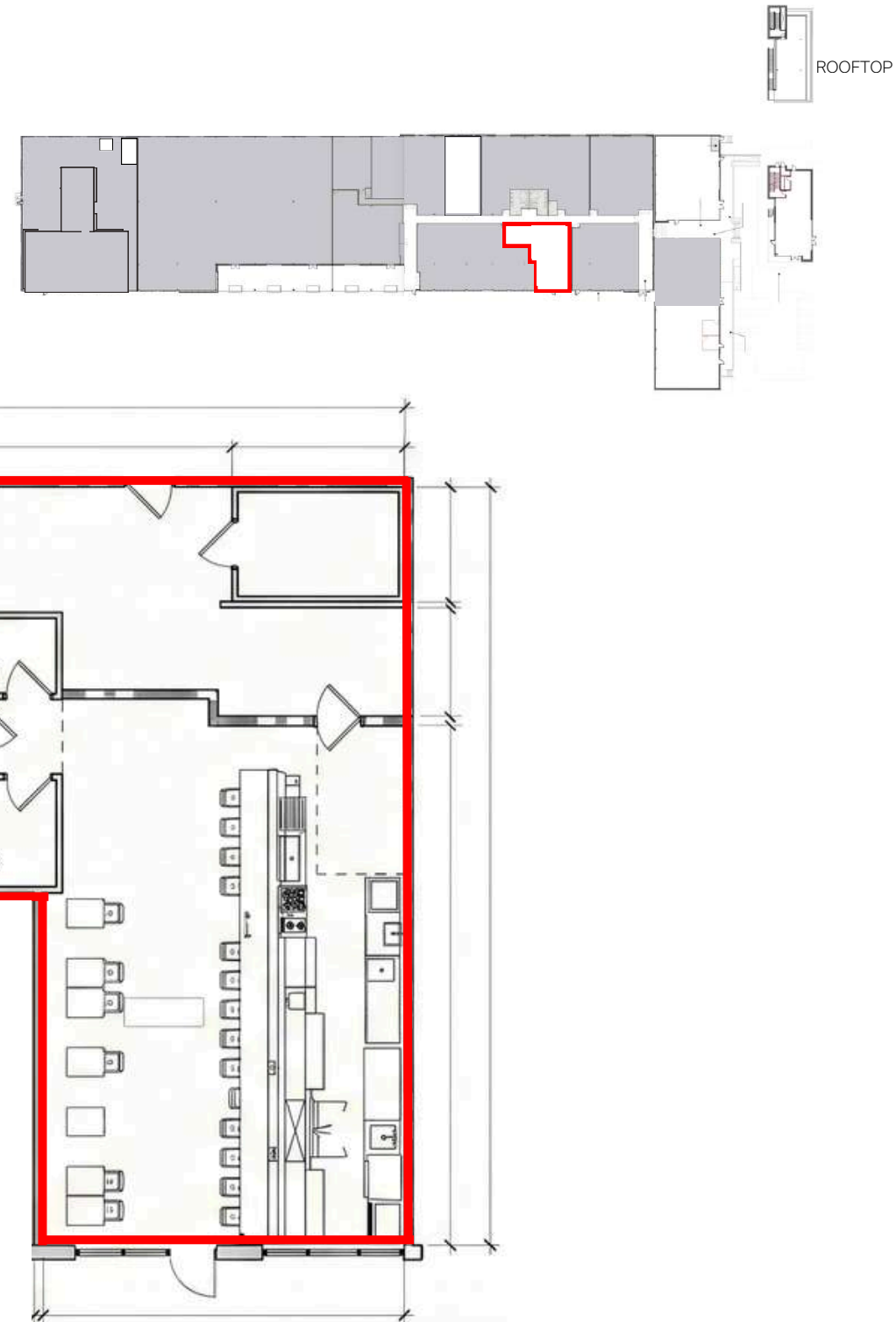
2ND
GENERATION
RESTAURANT
SPACE

SUITE 155 - 1,790 SF

AMENITIES INCLUDE:

- AMPLE PATIO SEATING
- FULL BAR
- NEW KITCHEN
- WALK-IN COOLER & FREEZER

**CONTACT BROKER FOR
MORE INFORMATION**





AVAILABLE RETAIL AND F&B

RETAIL 01 - ± 3,496 SF

RETAIL 02 - ± 3,518 SF

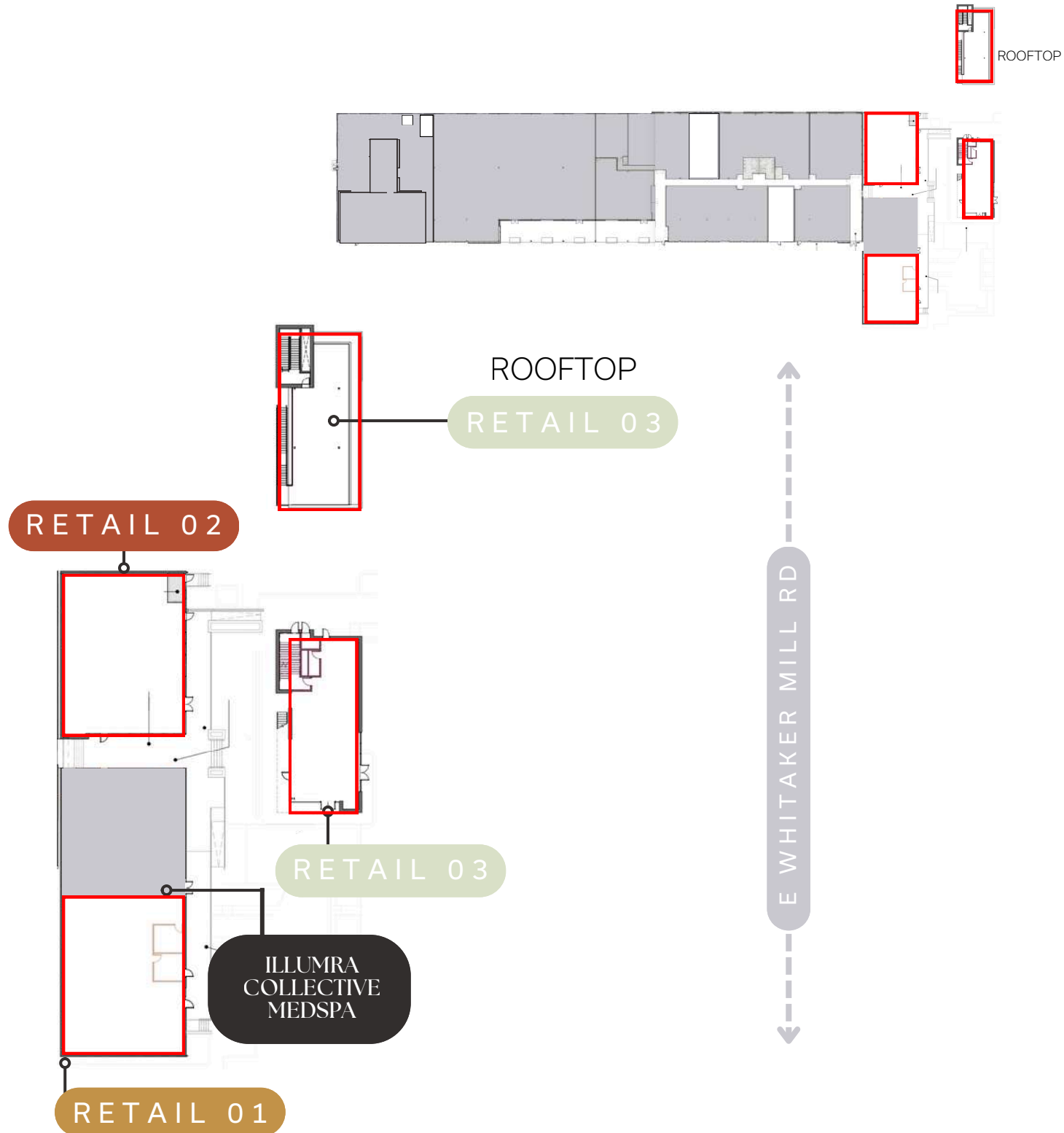
RETAIL 03 - ± 3,795 SF

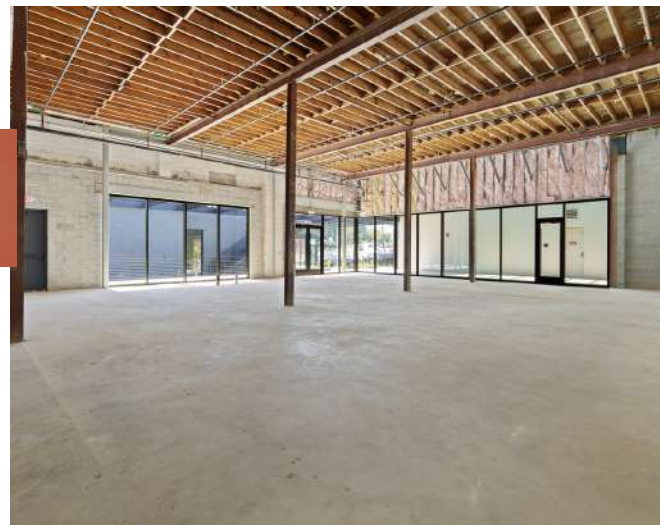
- Lower Level - 2,215 SF
- Upper Level - 1,580 SF

AMENITIES INCLUDE:

- AMPLE PATIO SEATING
- SURFACE PARKING
- DELIVERED IN COLD DARK SHELL CONDITION

**CONTACT BROKER FOR
MORE INFORMATION**





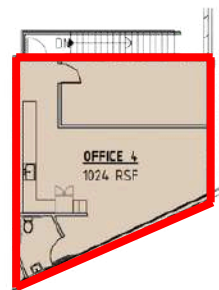


1020
E WHITAKER MILL RD

RETAIL · OFFICE · F+B
AVAILABLE

SUITE 105: 2,143 SF
SUITE 230: 1,024 SF

CONTACT BROKER FOR
MORE INFORMATION



2ND FLOOR



1020 E WHITAKER MILL RD



AT THE CROSSROADS OF OLD AND NEW

Conveniently situated at the crossroads of downtown and midtown, East End Market is transforming into Raleigh's premier dining and entertainment destination. Once a historic warehouse district, it has evolved into a hub for creative office spaces, retail, and food & beverage venues



AVG AGE: 37.5



MEDIAN HOME
VALUE: \$639,677



2024 TOTAL
POPULATION:
109,523



POP GROWTH
2025-2030: 1.6%



AVG HOUSEHOLD
INCOME: \$124,116



AVG HOUSEHOLD SIZE:
2.1

BREW
COFFEE BAR
NORTH CAROLINA

CHIDO TACO
FRÉSKO
F45 TRAINING

MIDTOWN
EAST

MCNEILL
POINTE

EAST END
MARKET

IRON
WORKS

DOCK
1053

FIVE
POINTS

ILUMRA
SKIN

EAST END
BISTROT



THE DAILY PILATES



DINING

- Aija
- Hummingbird
- Brodeto
- Botiwalla
- Andia's
- East Cut
- East End Bistrot
- Whataburger
- Torchy's Tacos
- Crumbl Cookies
- Cava
- Burger Fi
- Chick-fil-A
- Fresko
- Ponysaurus
- Trophy Brewing
- Bowstring
- High Park
- Little Rey
- Chido Taco

BREWERY/BAR

- East Bower Cidery
- Neuse River
- Lynnwood
- Ponysaurus
- Cloud's Brewing
- Songbird

SHOPPING

- Wegmans
- Costco
- Trader Joes
- Staples
- PGA Superstore

COFFEE

- Brew Coffee
- Bright Spot
- Larry's Coffee
- Bad Brain
- Drift Coffee
- Third Place

WELLNESS

- FX
- Solidcore
- Barre3
- The Daily Pilates
- Yoba Studio
- Raleigh Dance & Tumble
- F45 Training
- Peach Lab
- Triangle Rock Club
- Mister Pompadour
- Illumra Skin

LIVING

- Forge

ENTERTAINMENT

- Cannonball Event Hall
- Bowstring Music Venue

TRENT RAGLAND, BROKER

919.815.8414

tragland@atlasstark.com

RUFFIN JONES, BROKER

919.602.6571

ruffjones@atlasstark.com

TYLER CHRISTENSEN, BROKER

828.999.9459

tchristensen@atlasstark.com

GABE GUILLOIS, PRINCIPAL

gguillois@atlasstark.com

919-289-1338

www.atlasstark.com

**EAST END
MKT**

**RALEIGH
NC**