



STANTON ROAD  
CAPITAL

Regus

NOW LEASING

# UNION PARK 4

6975 UNION PARK AVENUE  
SALT LAKE CITY, UTAH



CUSHMAN &  
WAKEFIELD

**UNION PARK 4**  
6975 UNION PARK AVENUE  
SALT LAKE CITY, UTAH

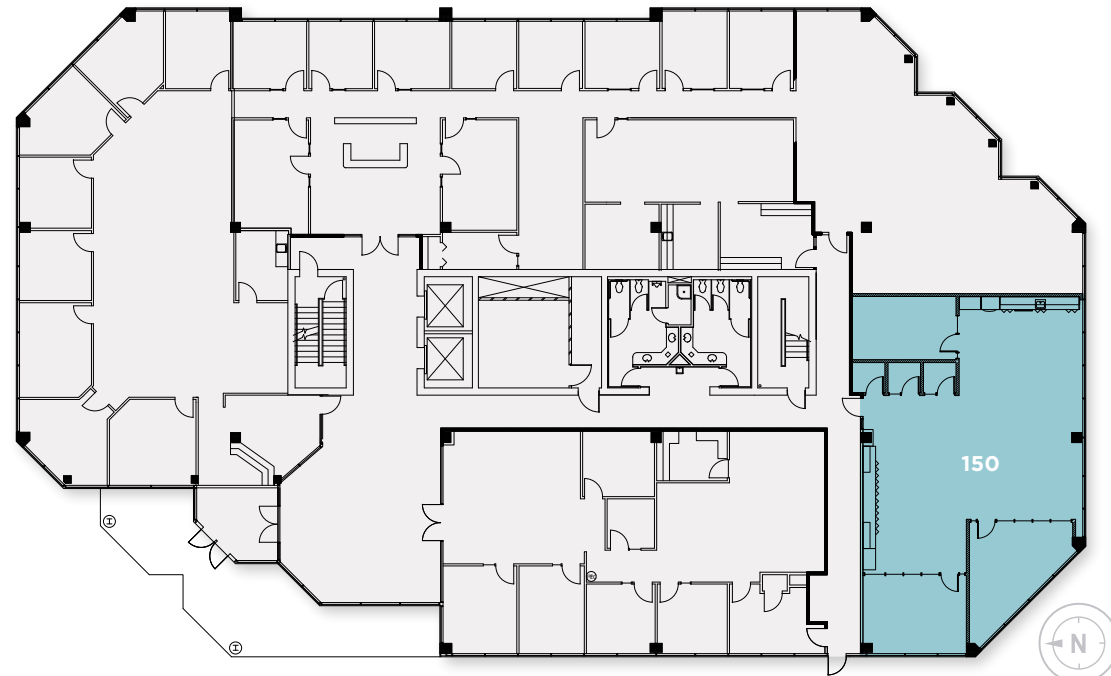
Each **Union Park** building has a two-story open atrium lobby. The buildings have stunning views of the Salt Lake Valley. Covered parking is available and the buildings are equipped with high-speed fiber optic network and Internet connectivity, as well as centralized security and surveillance.

**\$28.50**  
PSF, FULL SERVICE  
**CLASS A**  
FINISHES



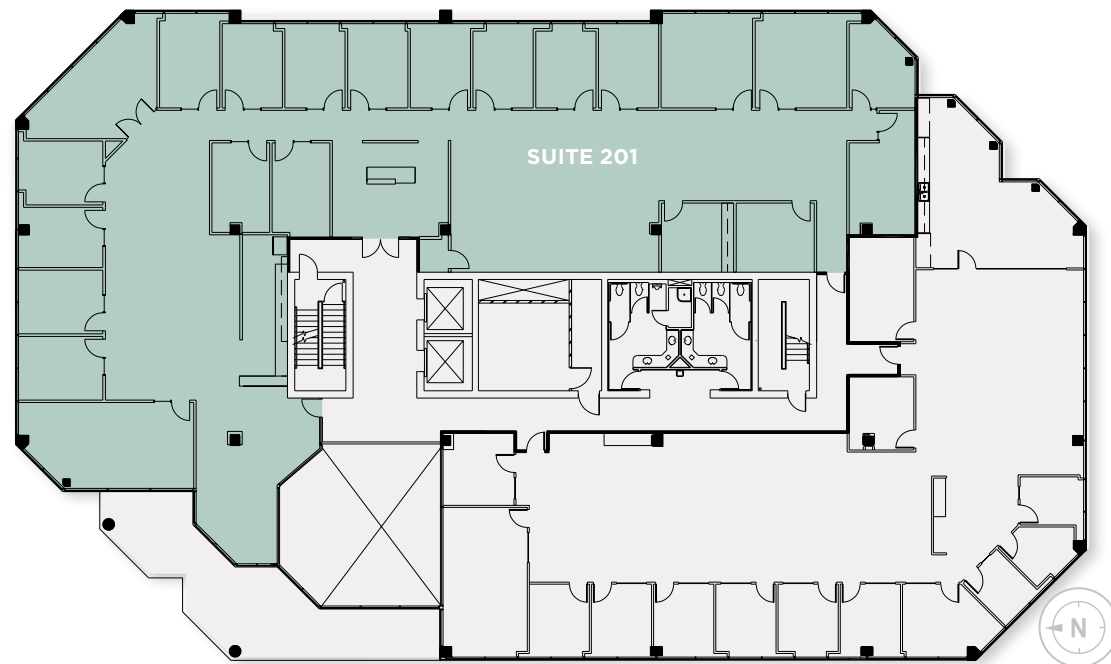
**FIRST FLOOR**

SUITE:	150
SIZE:	2,403 RSF
AVAILABLE:	Immediately



**SECOND FLOOR**

SUITE:	201
SIZE:	9,560 RSF
AVAILABLE:	Immediately



SUITE 460 TOUR

**FOURTH FLOOR**

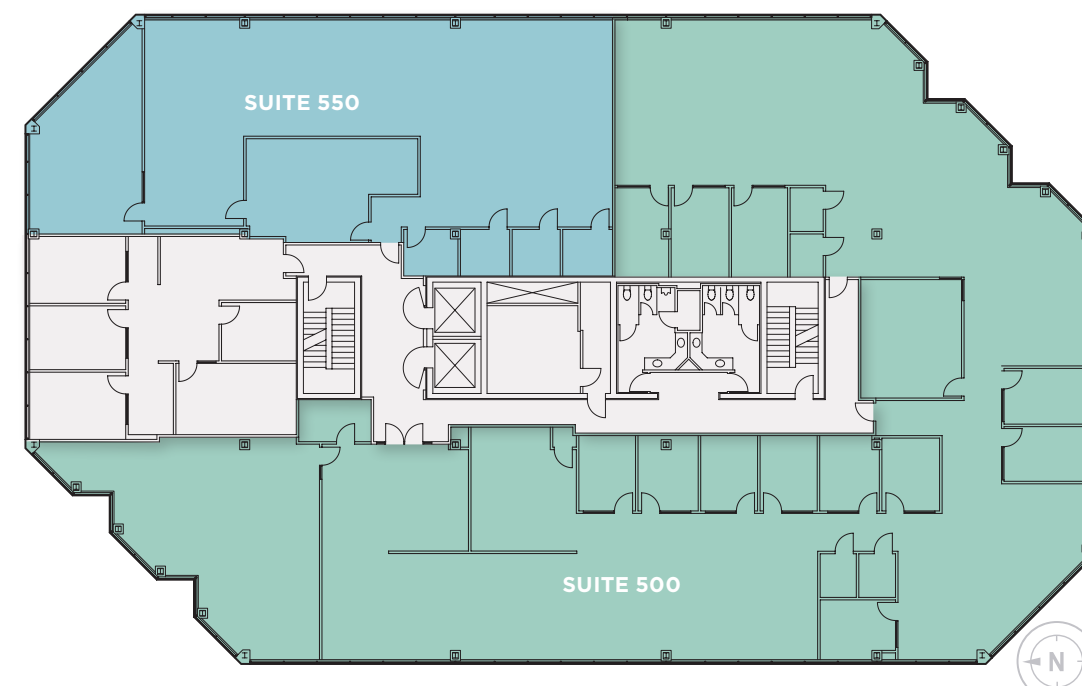
SUITE:	460
SIZE:	3,377 RSF
AVAILABLE:	Immediately
SUITE:	470
SIZE:	6,814 RSF
AVAILABLE:	Immediately

Two spaces can be combined for a total of 10,191 RSF

**FIFTH FLOOR**

SUITE:	500
SIZE:	11,241 RSF
AVAILABLE:	Currently available for sublease
SUITE:	550
SIZE:	3,575 RSF
AVAILABLE:	Immediately

Two spaces can be combined for a total of 14,816 RSF





## SURROUNDING AREA

Conveniently located in the center of Salt Lake, within minutes of fine residential neighborhoods as well as the major freeway system, Fashion Place Mall and numerous restaurants and lodging.

### Contact Info

**Dana Baird, CCIM**  
 Executive Managing Director  
 +1 801 303 5526  
 dana.barid@cushwake.com

**Mike Richmond**  
 Executive Managing Director  
 +1 801 303 5434  
 mike.richmond@cushwake.com

**Hannah King**  
 Associate  
 +1 801 303 5440  
 hannah.king1@cushwake.com



170 South Main Street, Suite 1600  
 Salt Lake City, UT 84101  
 +1 801 322 2000  
 cushmanwakefield.com



©2025 Cushman & Wakefield. All rights reserved. The information contained in this communication is strictly confidential. This information has been obtained from sources believed to be reliable but has not been verified. NO WARRANTY OR REPRESENTATION, EXPRESS OR IMPLIED, IS MADE AS TO THE CONDITION OF THE PROPERTY (OR PROPERTIES) REFERENCED HEREIN OR AS TO THE ACCURACY OR COMPLETENESS OF THE INFORMATION CONTAINED HEREIN, AND SAME IS SUBMITTED SUBJECT TO ERRORS, OMISSIONS, CHANGE OF PRICE, RENTAL OR OTHER CONDITIONS, WITHDRAWAL WITHOUT NOTICE, AND TO ANY SPECIAL LISTING CONDITIONS IMPOSED BY THE PROPERTY OWNER(S). ANY PROJECTIONS, OPINIONS OR ESTIMATES ARE SUBJECT TO UNCERTAINTY AND DO NOT SIGNIFY CURRENT OR FUTURE PROPERTY PERFORMANCE.